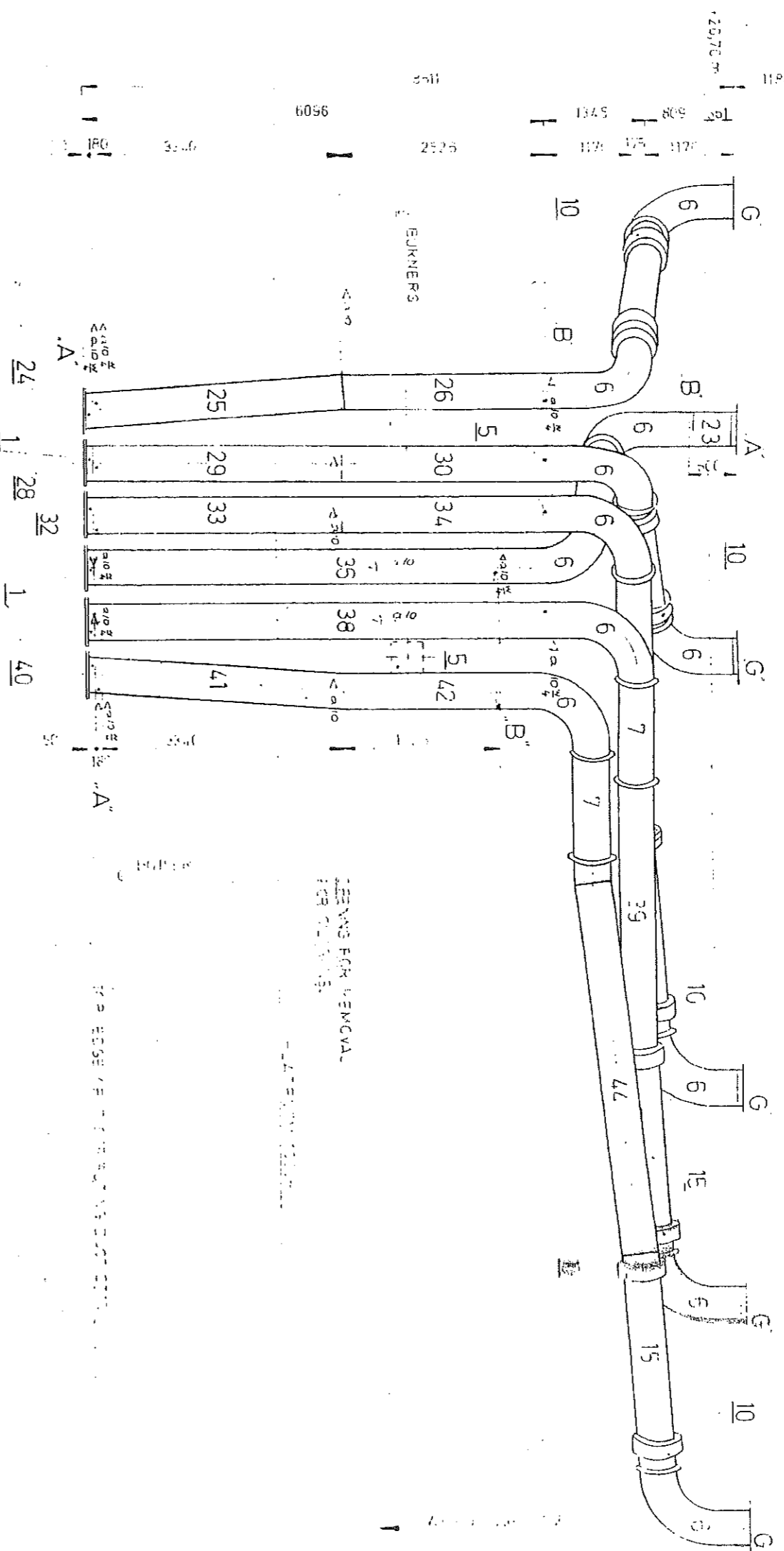


U 4-6 A/F mills

5	F6 A1	F5 A2	F4 A3	F3 A4	F2 A2	F1 A5
---	----------	----------	----------	----------	----------	----------

SUPPER CONNECTION



PLAN VIEW FRONT CENTRAL

Burner plane as drawn with platform + 20,70 m.

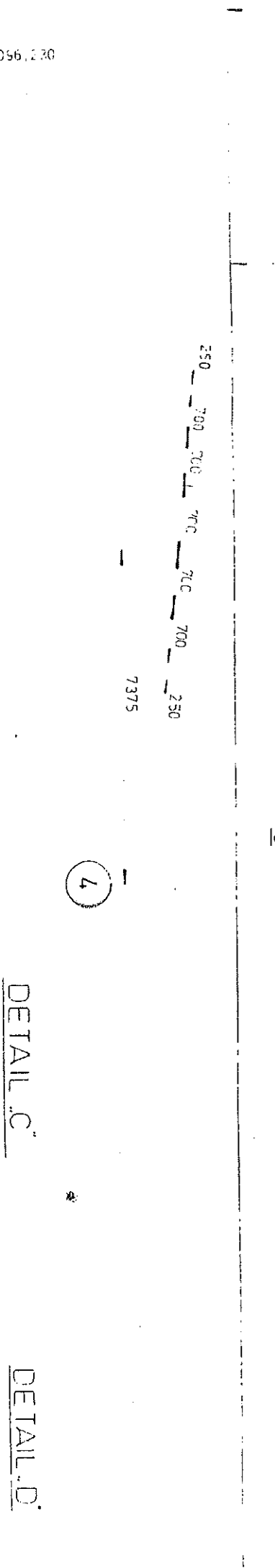
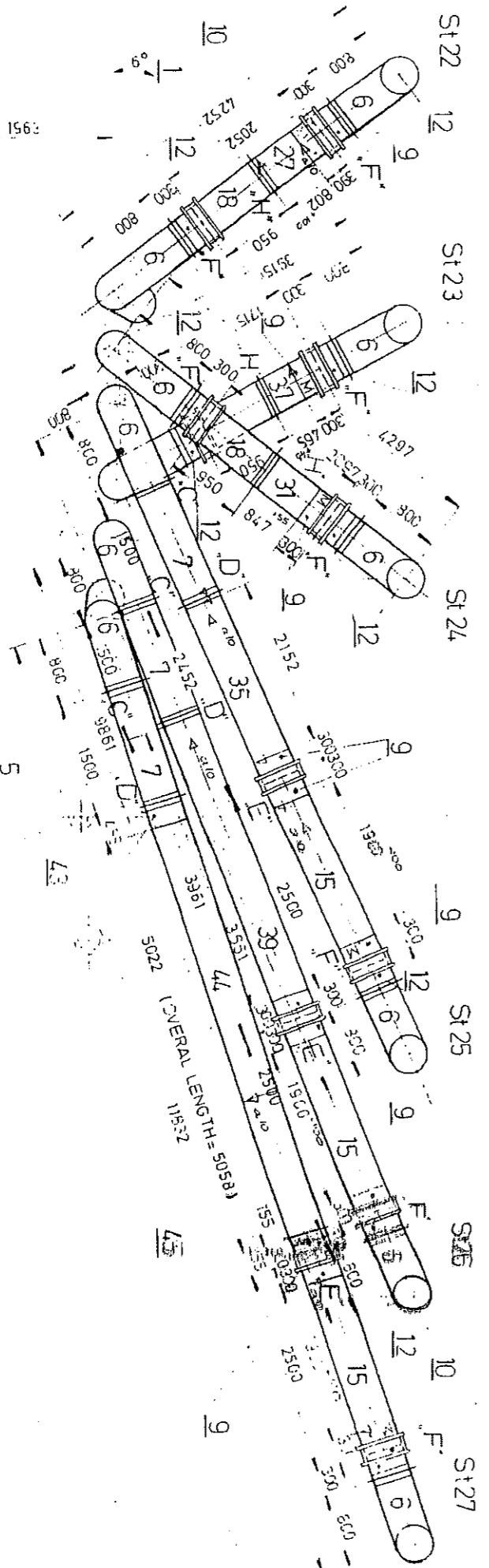
Sub-Assy St22 to St27

1off on Boiler Front wall to Burners A1 to A6 (from Mill A)

1off on Boiler Rear wall to Burners F1 to F6 (Mill F)

BOILER FRONT WALL REAR WALL					
F6	F5	F4	F3	F2	F1
A1	A2	A3	A4	A5	A6
2575	3000	3060	2875	2350	2775
				3000	3550

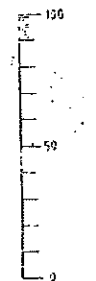
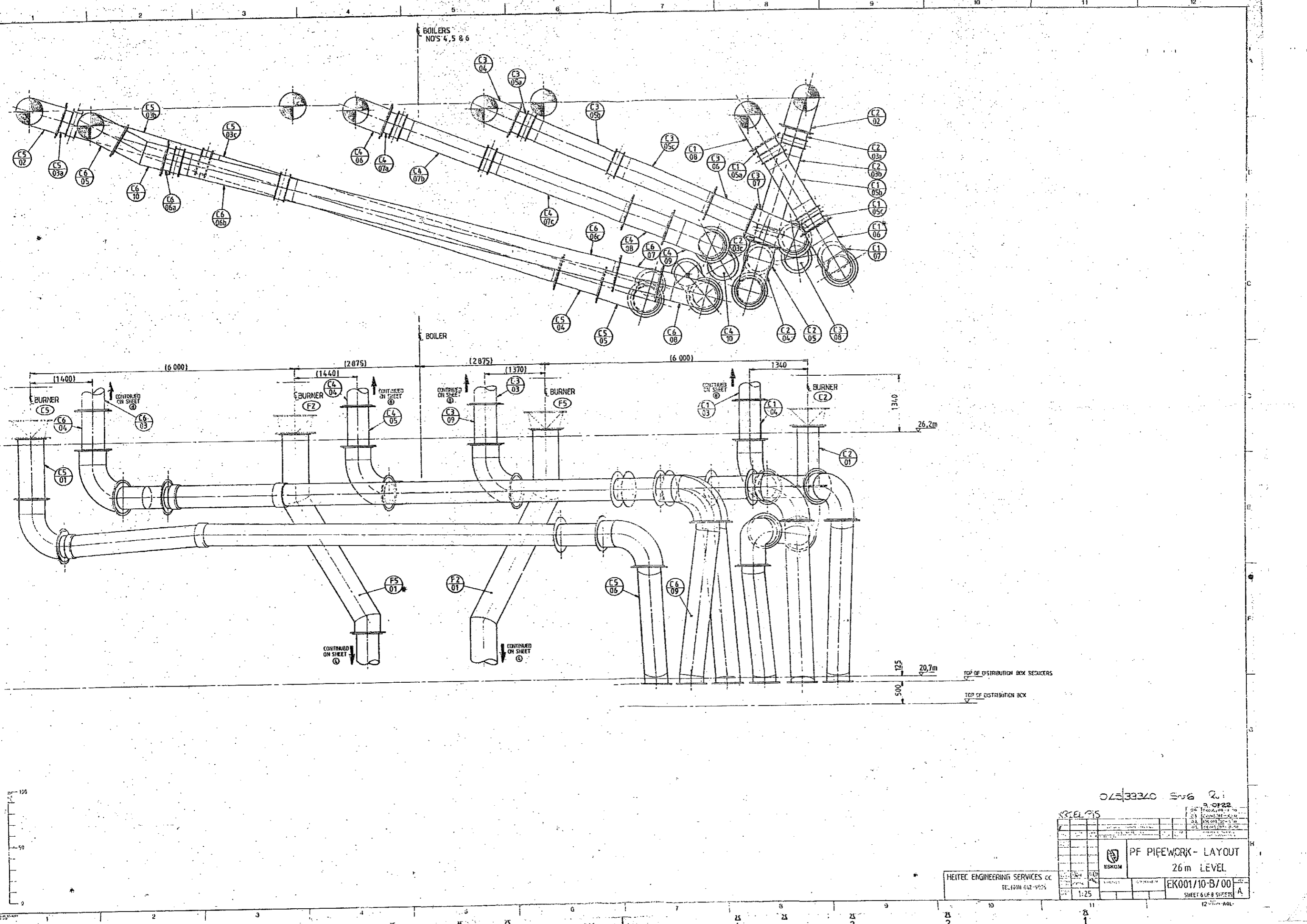
N111 - 132 -



DETAIL C

DETAIL D

4



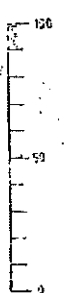
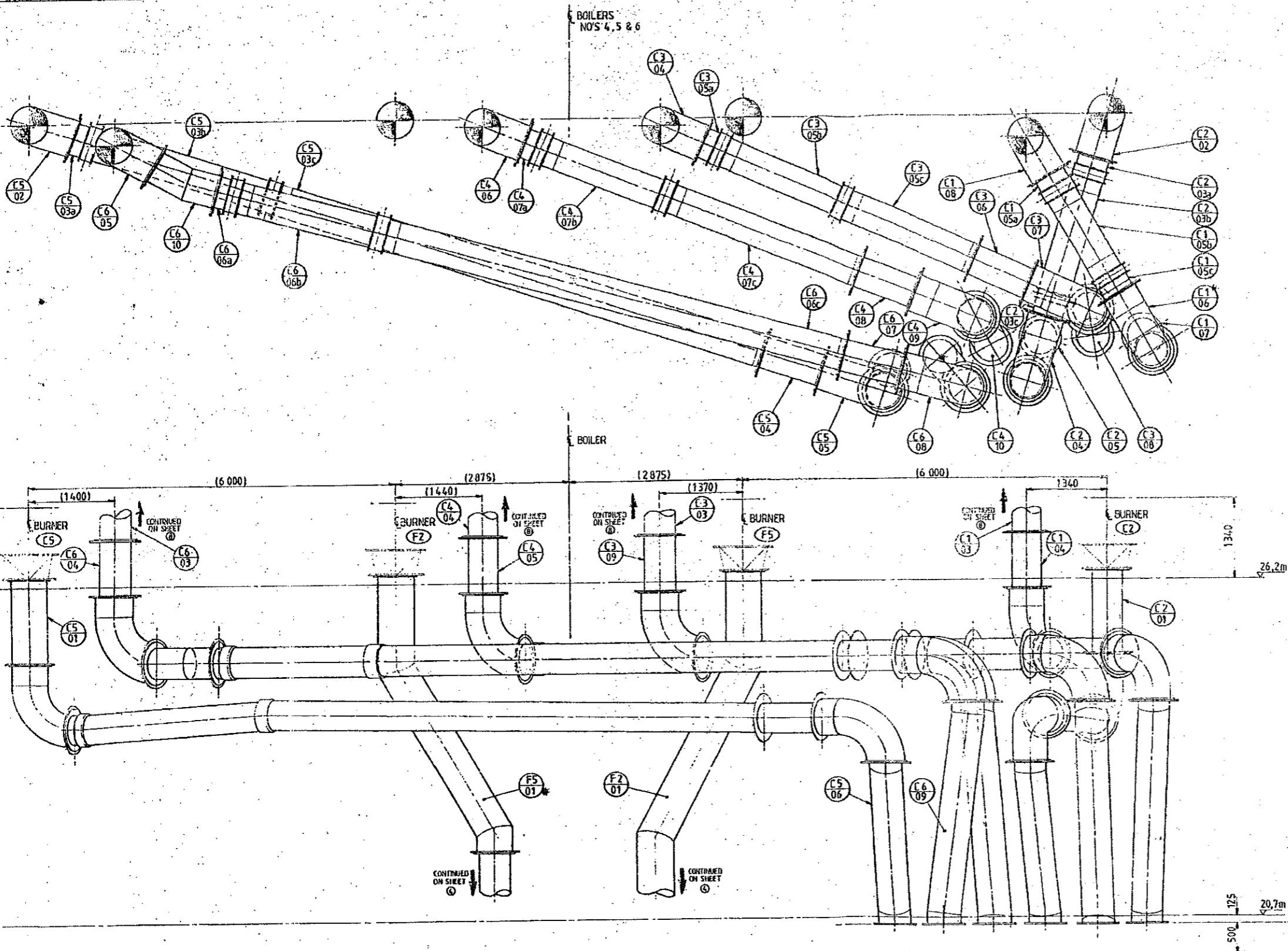
MICROBOX

HEITEC ENGINEERING SERVICES CC
TEL: 031 432 9074

07533320 Eng 2.1

NO	DATE	DESCRIPTION
01	2001-10-01	ISSUED FOR PERMIT
02	2001-10-01	ISSUED FOR PERMIT
03	2001-10-01	ISSUED FOR PERMIT
04	2001-10-01	ISSUED FOR PERMIT
05	2001-10-01	ISSUED FOR PERMIT
06	2001-10-01	ISSUED FOR PERMIT
07	2001-10-01	ISSUED FOR PERMIT
08	2001-10-01	ISSUED FOR PERMIT
09	2001-10-01	ISSUED FOR PERMIT
10	2001-10-01	ISSUED FOR PERMIT
11	2001-10-01	ISSUED FOR PERMIT
12	2001-10-01	ISSUED FOR PERMIT

PF PIPEWORK - LAYOUT
26 m LEVEL
EKO01/10-B/00
SHEET 6 OF 8 SHEETS
1:25
A

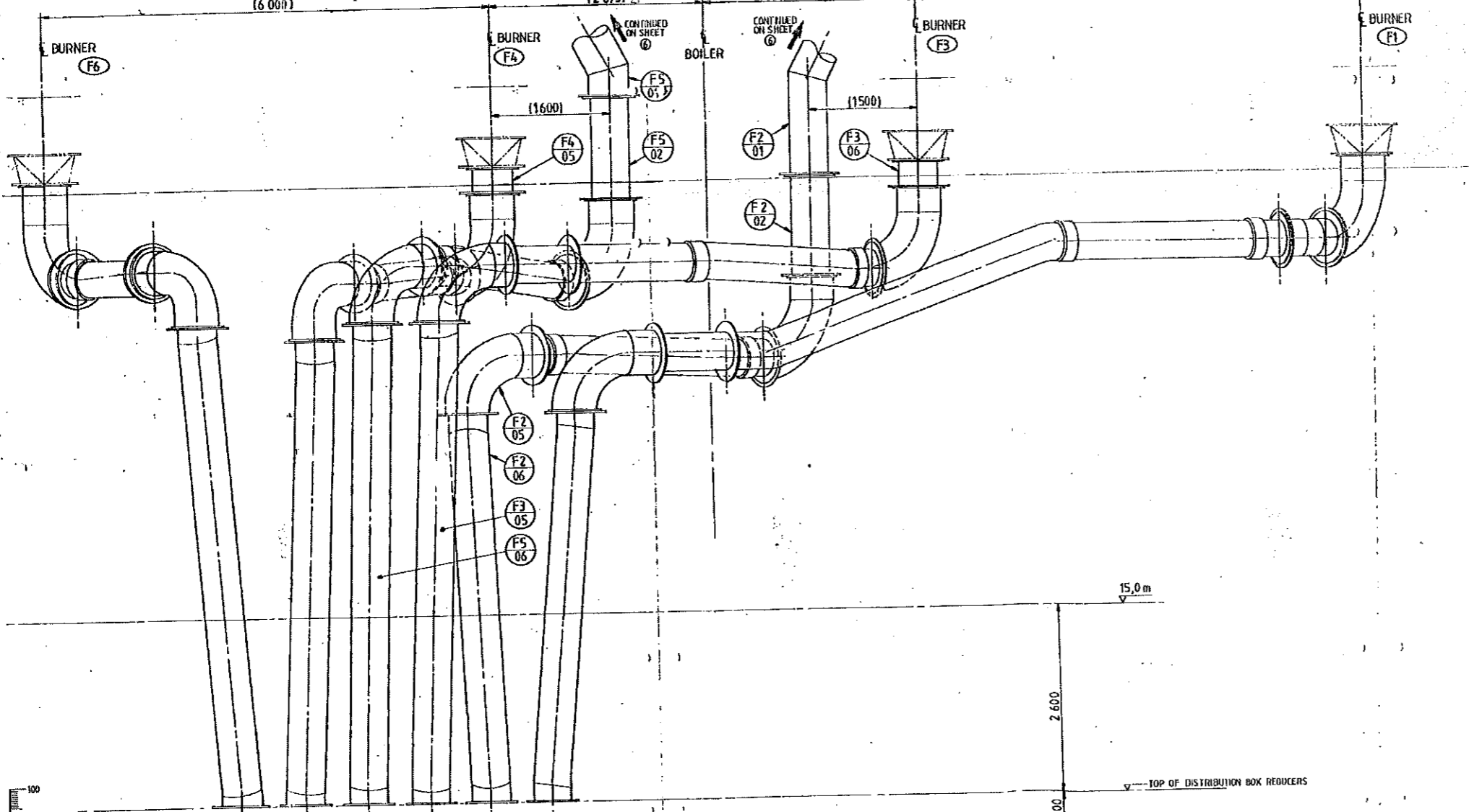
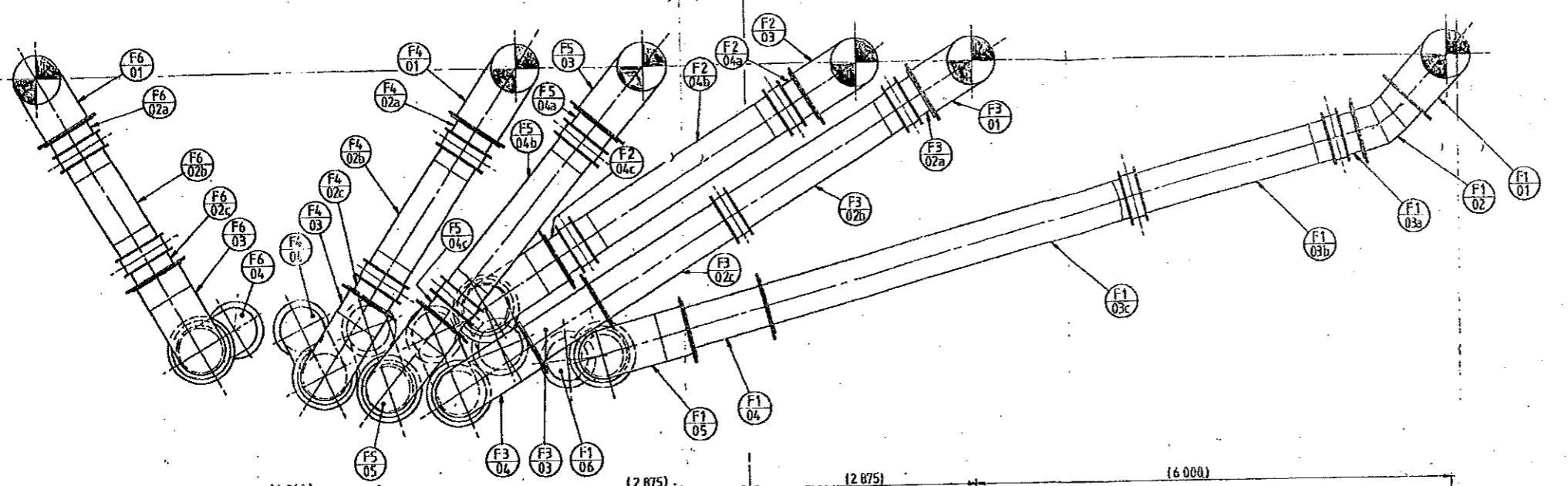


07533320 SWG 2.1

DATE	07/22
BY	
CHECKED	
APPROVED	
PF PIPEWORK - LAYOUT	
26 m LEVEL	
EKO01/10-B/00	
SHEET 6 OF 8 SHEETS	
SCALE	1:25

HEITEC ENGINEERING SERVICES cc
TEL: (011) 642-9925

BOILERS
NO. 4, 5 & 6



0.45/33320 SN4 R01

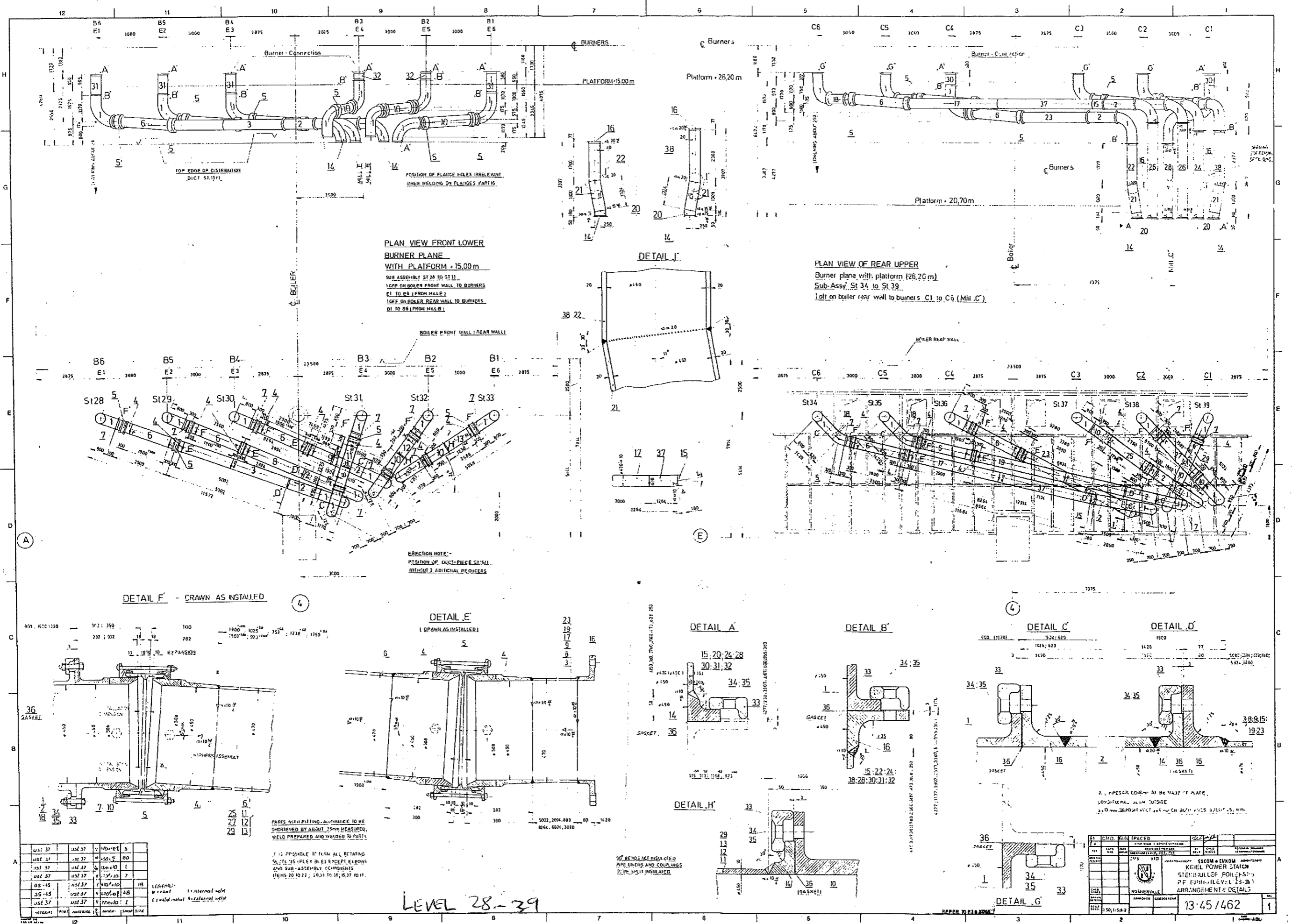
KRIEL PIS		0103-22	
1	DATE	2	BY
2	DATE	3	BY
3	DATE	4	BY
4	DATE	5	BY
5	DATE	6	BY
6	DATE	7	BY
7	DATE	8	BY
8	DATE	9	BY
9	DATE	10	BY
10	DATE	11	BY
11	DATE	12	BY

PF PIPEWORK LAYOUT
22m LEVEL
F M

HEITEC-ENGINEERING SERVICES CC
TEL1011 642-9026

APPROVED
1:25

SHEET 4 OF 8 SHEETS



PLAN VIEW FRONT LOWER BURNER PLANE WITH PLATFORM +15.00 m
 SUB ASSEMBLY ST 28 TO ST 33
 100% ON BOILER FRONT WALL TO BURNERS E1 TO E6 (FROM MILE)
 100% ON BOILER REAR WALL TO BURNERS B1 TO B6 (FROM MILE)

PLAN VIEW OF REAR UPPER Burner plane with platform +26.20 m
 Sub-assy. St 34 to St 39
 100% on boiler rear wall to burners C1 to C6 (MILE C)

ERECTION NOTE:
 POSITION OF DUCT-Pieces St 31/32 WITHOUT 2 ADDITIONAL BRACKETS

DETAIL F - DRAWN AS INSTALLED

DETAIL E (DRAWN AS INSTALLED)

DETAIL A

DETAIL B

DETAIL C

DETAIL D

DETAIL H

DETAIL G

USE 37	USE 37	Welded	3
USE 37	USE 37	Welded	80
USE 37	USE 37	Welded	1
USE 37	USE 37	Welded	7
USE 37	USE 37	Welded	18
USE 37	USE 37	Welded	48
USE 37	USE 37	Welded	1

PARTS WITH FITTING ALLOWANCE TO BE SHORTENED BY ABOUT 25mm BEARING, WELD PREPARED AND WELDED TO PARTS.
 IF IT IS POSSIBLE TO FLUSH ALL ROTATING SURFACES (FLYWHEELS, EJECTOR, KLEANS) AND SUB-ASSEMBLY COMPONENTS (VENTS) TO 100%, 100% TO 100% TO 100%.

90° BENDS NOT INSTALLED
 PIPE, UNITS AND CONNECTIONS TO BE SPILT INSULATED

NO.	REV.	DATE	BY	CHKD.	DESCRIPTION
1					ISSUED FOR WORK
2					REVISIONS
3					REVISIONS
4					REVISIONS
5					REVISIONS
6					REVISIONS
7					REVISIONS
8					REVISIONS
9					REVISIONS
10					REVISIONS

13-45/462

LEVEL 28-29