

- NOTES:
- PRESSURE REGULATOR IS FITTED WITH LOCAL PRESSURE INDICATION FOR OUTLET PRESSURE OF THE REGULATOR. THE SET-POINT FOR THE PRESSURE REGULATOR WILL BE DETERMINED BY THE SELECTED AIR-DRIVEN DIAPHRAGM PUMP.
 - Y1702C IS A DEW POINT INDICATOR AND TRANSMITTER.
 - MAIN COMPONENTS OF THE AIR PURIFICATION SYSTEM INCLUDE A PRE-FILTER, DESICCANT DRIER AND AN AFTER-FILTER.
 - CONDENSATE FROM MOISTURE SEPARATOR Y1701 WILL BE DRAINED DIRECTLY TO DRIP TRAY Y1706 (NO PIPING REQUIRED).
 - THE SIGNALS FOR PRESSURE READ-OUT AND LOW ALARM FROM PIT1703 WILL BE DISPLAYED AND ALARMED AS PIA1703 ON THE SCADA OF THE PTFE DEMO SYSTEM.

REFERENCED P&IDs & DOCUMENTS

1.	ENS-OWPVR-PID-24008	: Basic engineering design : P&ID-utilities system
2.	ENS-NWPVR-PID-24013	: NW plagas demonstration system subsystem 11
3.	ENS-NWPVR-PID-24002	: NW plagas demonstration system subsystem 15
4.	ENS-FPD-PID-24013	: P&ID diagram KOH scrubber system 810
5.	ENS-FPD-PID-24003	: P&ID diagram KOH scrubber system 831

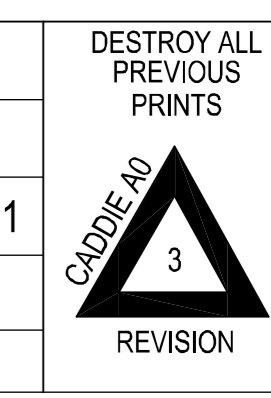
FUNC.	NAME	DESIGNATION	SIGNATURE	DATE
PRP'D	L.Dlamini	Process Engineer		
REVIEW	B.Khumalo	Senior Process Engineer		
REVIEW	G.Manuel	Chief Engineer Control & Instrumentation		
REVIEW	W.van den Berg	Chief Electrical Engineer		
REVIEW	S.Mngoma	Chief Mechanical Engineer		
APPR'D	K.Moodley	Chief Process Engineer		

COPYRIGHT
 THIS DRAWING IS THE PROPERTY OF
 THE SOUTH AFRICAN NUCLEAR
 ENERGY CORPORATION AND MAY NOT,
 WITHOUT THE WRITTEN AUTHORITY
 OF THE SOUTH AFRICAN NUCLEAR
 ENERGY CORPORATION BE COPIED
 OR USED EITHER WHOLLY OR IN PART
 FOR ANY PURPOSE OTHER THAN FOR
 WHICH IT IS SUPPLIED.

REV	DESCRIPTION	PRP'D	DATE
1	First revision	LD	09/12/2024
2	Second issue	LD	12/03/2025
3	Third issue- Changing of material from SS to CB	LD	10/06/2025

SCALE - NTS
 UNITS - N/A

PROJECT	NW PLASGAS
TITLE	P&ID DIAGRAM
DRG.No.	ENS-NWPVR-PID-24014
SHEET	1 OF 1
TEAMCENTRE No.	-



ENS-NWPVR-PID-24014