	<p style="text-align: center;"><b>Scope of Work</b></p>	<p style="text-align: center;"><b>Generation Komati Power Station</b></p>
---	---	---

**Title: Provision of Rehabilitation and Cleaning of Environmental Spillages in and around Komati Power Station**

**Document Identifier: 285-169572**

**Alternative Reference Number: N/A**

**Area of Applicability: Komati Power Station**

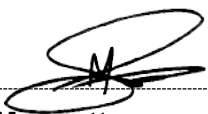


**Functional Area: Operating Support**

**Revision: 0**

**Total Pages: 9**

**Next Review Date: N/A**

**Disclosure Classification: Controlled Disclosure**

<b>Compiled by</b>	<b>Functional Responsibility</b>	<b>Authorized by</b>
		
<p><b>M. Scott</b></p>	<p><b>V.M. Makhubedu</b></p>	<p><b>R.T.T. Mbowane</b></p>
<p><b>Senior Technician</b></p>	<p><b>Operating Support Manager</b></p>	<p><b>Operating and Production Manager</b></p>
<p>Date: 2026.03.11</p>	<p>Date: 2026/03/12</p>	<p>Date: 12/03/2026</p>

## **Content**

	Page
1. INTRODUCTION.....	3
2. SUPPORTING CLAUSES .....	3
2.1 Scope.....	3
2.1.1 Purpose.....	3
2.1.2 Applicability .....	3
2.1.3 Effective date.....	3
2.2 Normative/Informative References .....	3
2.2.1 Normative.....	3
2.2.2 Informative.....	4
2.3 Definitions .....	4
2.4 Abbreviations .....	4
2.5 Roles and Responsibilities .....	4
2.5.1 Operating Support Department.....	4
2.5.2 Service Provider .....	5
2.6 Process for Monitoring.....	5
2.7 Related/Supporting Documents .....	5
3. SCOPE OF WORK - ENVIRONMENTAL SPILL RESPONSE AND ENVIRONMENTAL CLEANING SERVICES .....	5
3.1 General Service Requirements.....	5
3.2 Emergency Work.....	5
3.2.1 Environmental Spill Response.....	5
3.2.2 Emergency Response Time .....	6
3.3 Routine Environmental Work.....	6
3.3.1 Cooling Tower Pond and Channels Cleaning .....	6
3.3.2 Fuel Oil Offloading Bay and Pump House Sump Cleaning .....	6
3.3.3 Ash Dam Environmental Maintenance.....	6
3.3.4 Tank and Bund Cleaning Where Required .....	7
3.4 Waste Management .....	7
3.4.1 Waste Handling and Disposal.....	7
3.5 Equipment.....	7
3.5.1 Equipment and Resources .....	7
4. ACCEPTANCE .....	8
5. REVISIONS.....	8
6. DEVELOPMENT TEAM.....	8
7. ACKNOWLEDGEMENTS.....	8
Appendix A – Ash Dam Areas Requiring Vegetation Control and Maintenance .....	9

### **CONTROLLED DISCLOSURE**

## **1. INTRODUCTION**

Environmental legislation requires Eskom to prevent and control the release of hazardous substances such as chemicals, oils and other pollutants that may negatively impact the natural environment. Where spillages or contamination occur, the affected areas must be contained, cleaned and rehabilitated in accordance with the applicable environmental legislation.

Various operational areas within Komati Power Station are susceptible to the accumulation of environmental contaminants. These include ash dam seepage catchment areas, cooling tower ponds, fuel oil offloading bays, old fuel oil service tanks, pump house sumps and other areas where oils, chemicals or contaminated water may accumulate over time.

In addition, environmental risks may arise during station decommissioning activities. These risks require timely containment, cleaning and lawful disposal of contaminated materials in order to protect the surrounding environment and ensure compliance with environmental legislation.

This document defines the requirements for the provision of the services for the cleaning, rehabilitation and management of environmental spillages and related environmental threats at Komati Power Station.

## **2. SUPPORTING CLAUSES**

### **2.1 Scope**

#### **2.1.1 Purpose**

This document defines the requirements for the provision of services for the containment, cleaning, rehabilitation and management of environmental spillages and related environmental threats at Komati Power Station. The document establishes the scope of work, responsibilities and operational requirements applicable to the appointed service provider.

#### **2.1.2 Applicability**

This document applies to Komati Power Station Operating Support Department and the appointed service provider responsible for the provision of environmental spill response, cleaning, rehabilitation and associated environmental maintenance services within the boundaries of Komati Power Station.

#### **2.1.3 Effective date**

This document shall become effective from the date of approval.

### **2.2 Normative/Informative References**

Parties using this document shall apply the most recent edition of the documents listed in the following paragraphs.

#### **2.2.1 Normative**

[1] Occupational Health and Safety Act (ACT No. 85 of 1993)

**CONTROLLED DISCLOSURE**

[2] National Environmental Management Act (Act No.107 of 1998)

[3] National Water Act (Act No.36 of 1998)

[4] Hazardous Substances ACT (Act No.15 of 1973)

### **2.2.2 Informative**

[1] Eskom Environmental Management Requirements

[2] Eskom Safety, Health, Environment and Quality procedures

[3] Waste Classification and Management Regulations

### **2.3 Definitions**

#### **Emergency Spill Response:**

The immediate containment, cleaning and mitigation of an environmental spill or contamination incidents in order to prevent further environmental impact.

#### **Environmental Contaminant:**

Any substance, including oil, fuel, chemicals, sludge, contaminated water or hazardous material, that may pose a risk to the environment if released or improperly handled.

#### **Environmental Spill:**

The uncontrolled release of oil, fuel, chemicals, contaminated water or any hazardous substance that may result in environmental contamination.

#### **Rehabilitation:**

The process of restoring an affected area to a condition that is environmentally safe and acceptable.

#### **Waste Disposal Certificate:**

An official document issued by a licensed waste disposal facility confirming that waste has been received and disposed of in accordance with environmental regulations.

### **2.4 Abbreviations**

<b>Abbreviation</b>	<b>Explanation</b>
OHS Act	Occupational Health and Safety Act
NEMA	National Environmental Management Act
TLB	Tractor Loader Backhoe
SHEQ	Safety, Health, Environment and Quality

### **2.5 Roles and Responsibilities**

#### **2.5.1 Operating Support Department**

- Identify and report environmental spillages or environmental threats.
- Provide instructions to the service provider for required cleaning or rehabilitation activities.

**CONTROLLED DISCLOSURE**

- Verify completion of work and receipt of disposal certificates.

### **2.5.2 Service Provider**

- Provide personnel, equipment and resources required to respond to environmental spillages.
- Conduct cleaning, containment and rehabilitation activities as instructed.
- Ensure safe handling, transportation and disposal of waste in accordance with applicable legislation.
- Dispose the materials to registered disposal areas.
- Provide waste manifests and disposal certificates to Eskom.

## **2.6 Process for Monitoring**

Monitoring of services rendered shall be conducted by the Komati Power Station Operating Support Department. Work completion shall be verified through site inspections, service reports and submission of waste disposal certificates where applicable.

## **2.7 Related/Supporting Documents**

Not applicable

## **3. SCOPE OF WORK - ENVIRONMENTAL SPILL RESPONSE AND ENVIRONMENTAL CLEANING SERVICES**

The contractor shall ensure that all activities are conducted in accordance with Eskom safety rules, environmental procedures and applicable legislation.

### **3.1 General Service Requirements**

The appointed service provider shall provide environmental spill response, cleaning, rehabilitation and associated environmental maintenance services within Komati Power Station.

The services shall be performed on an "as and when required" basis upon instruction from Eskom Operating Support or an authorised Eskom representative.

The contractor shall provide all personnel, equipment, vehicles, materials and protective equipment necessary to safely contain, clean, remove and dispose of environmental contaminants.

All work shall be conducted in compliance with applicable environmental legislation, safety regulations and Eskom SHEQ requirements.

### **3.2 Emergency Work**

#### **3.2.1 Environmental Spill Response**

The contractor shall respond to environmental spill incidents occurring within Komati Power Station including but not limited to:

**CONTROLLED DISCLOSURE**

- Diesel and petrol spillages.
- Fuel oil spillages.
- Lubrication oil spillages.
- Chemical spillages.
- Acid spillages.
- Liquid sulphur spillages.
- Ash water spillages.
- Contaminated stormwater spillages.
- Environmental spillages arising from station decommissioning activities.

The contractor shall ensure that the spillages are contained, cleaned and rehabilitated in a manner that prevents further environmental contamination.

### **3.2.2 Emergency Response Time**

The contractor shall respond to environmental spill incidents within two (2) hours of notification by Eskom.

The contractor shall ensure sufficient personnel and equipment are available to respond to emergency environmental incidents.

The contractor shall implement immediate containment measures to prevent the spread of contaminants and minimise environmental impact until full clean-up activities can be completed.

## **3.3 Routine Environmental Work**

### **3.3.1 Cooling Tower Pond and Channels Cleaning**

The contractor shall remove accumulated algae, sludge and other biological growth from cooling tower ponds in order to restore the ponds to their intended operating condition.

### **3.3.2 Fuel Oil Offloading Bay and Pump House Sump Cleaning**

The contractors shall remove oil-contaminated water, sludge and debris from the fuel oil offloading bay sumps and pump house sumps.

### **3.3.3 Ash Dam Environmental Maintenance**

The contractor shall perform environmental maintenance activities at ash dam areas including:

- Removal of sludge, vegetation, reeds and algae from seepage control areas.
- Clearing of solution trenches and seepage channels.
- Vegetation control to prevent damage to dam liners.
- Dust suppression activities using approved dust control chemicals.

**CONTROLLED DISCLOSURE**

### **3.3.4 Tank and Bund Cleaning Where Required**

The contractor shall perform cleaning of the following areas where required:

- Fuel oil offloading tanks.
- Fuel oil service tanks.
- Old fuel oil service tanks (between unit 6&5 FDH downcomer pipes area)
- Diesel and petrol tanks located at the ash dam petrol station.
- Bund walls and associated drainage systems.
- Unit lubrication oil tanks including central tanks.

## **3.4 Waste Management**

### **3.4.1 Waste Handling and Disposal**

All contaminated materials removed during cleaning activities shall be:

- Classified in accordance with environmental regulations.
- Transported by a licensed waste transporter.
- Disposed of at a registered waste disposal facility.

The contractor shall provide the following documentation to Eskom:

- Waste manifests.
- Waste disposal certificates.
- Waste transportation manifests.
- Laboratory analysis results where required.

## **3.5 Equipment**

### **3.5.1 Equipment and Resources**

The contractor shall provide equipment necessary for the execution of the work including but not limited to:

- Tractor Loader Backhoe (TLB).
- Pumps.
- Herbicide chemical sprayer 16L back sprayer.
- Spill containment equipment.
- Waste handling containers.
- Vehicles compliant with hazardous waste transportation requirements.

**CONTROLLED DISCLOSURE**

#### 4. ACCEPTANCE

This document has been seen and accepted by:

Name	Designation
Shoki Mbowane	Operating and Production Manager (acting)
Vincent Makhubedu	Operating Support Manager

#### 5. REVISIONS

Date	Rev.	Compiler	Remarks
March 2026	0	M Scott	First Issue

#### 6. DEVELOPMENT TEAM

The following people were involved in the development of this document:

- Vincent Makhubedu
- Mazz Scott

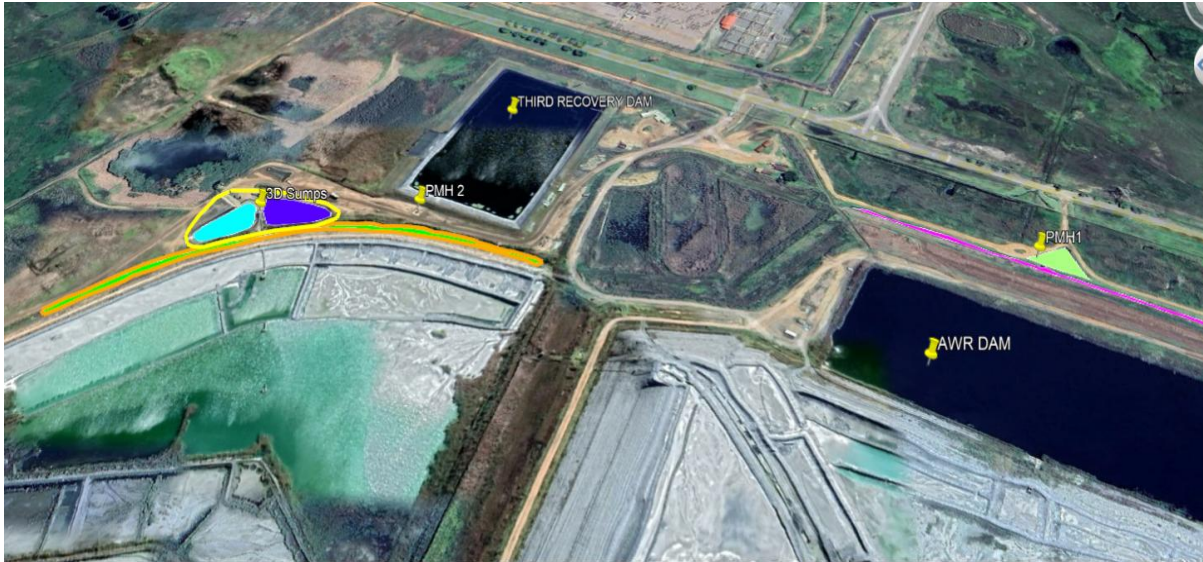
#### 7. ACKNOWLEDGEMENTS

None

**CONTROLLED DISCLOSURE**

## Appendix A – Ash Dam Areas Requiring Vegetation Control and Maintenance

The table below provides an overview of specific ash dam areas where vegetation control and environmental maintenance activities may be required. The information is provided for reference purposes to indicate typical locations and approximate surface areas. The scope of work may extend to other areas within Komati Power Station where environmental cleaning or spill response services are required.



**Figure A1 – Ash Dam Layout and Maintenance Areas**

Colour Code	Area	Scope of Work	Size (m <sup>2</sup> )
Green	New Ash Dam (Extension 3D) Solution Trenches	Complete clearance of grass and vegetation. Regular clearing to ensure solution trenches remain free from overgrowth.	3 500
Light and Dark Blue	3D Sump Dam 1 and Dam 2 including spillways	Removal of vegetation including grass and reeds within the dam area to prevent damage to dam liners.	3 500
Yellow	Surrounding Areas around 3D Sump	Grass cutting and regular maintenance to control vegetation growth.	4 000
Light Green	Area surrounding PMH1	Grass cutting and regular vegetation maintenance.	1 000
Purple	AWR Seepage Channel / Solution Trenches	Complete clearance of grass and vegetation to prevent overgrowth in seepage channels and trenches.	1 500

**Table A1 – Ash Dam Areas Requiring Vegetation Control and Environmental Maintenance**

*Note: The surface areas provided are approximate and are intended for reference only.*

**CONTROLLED DISCLOSURE**