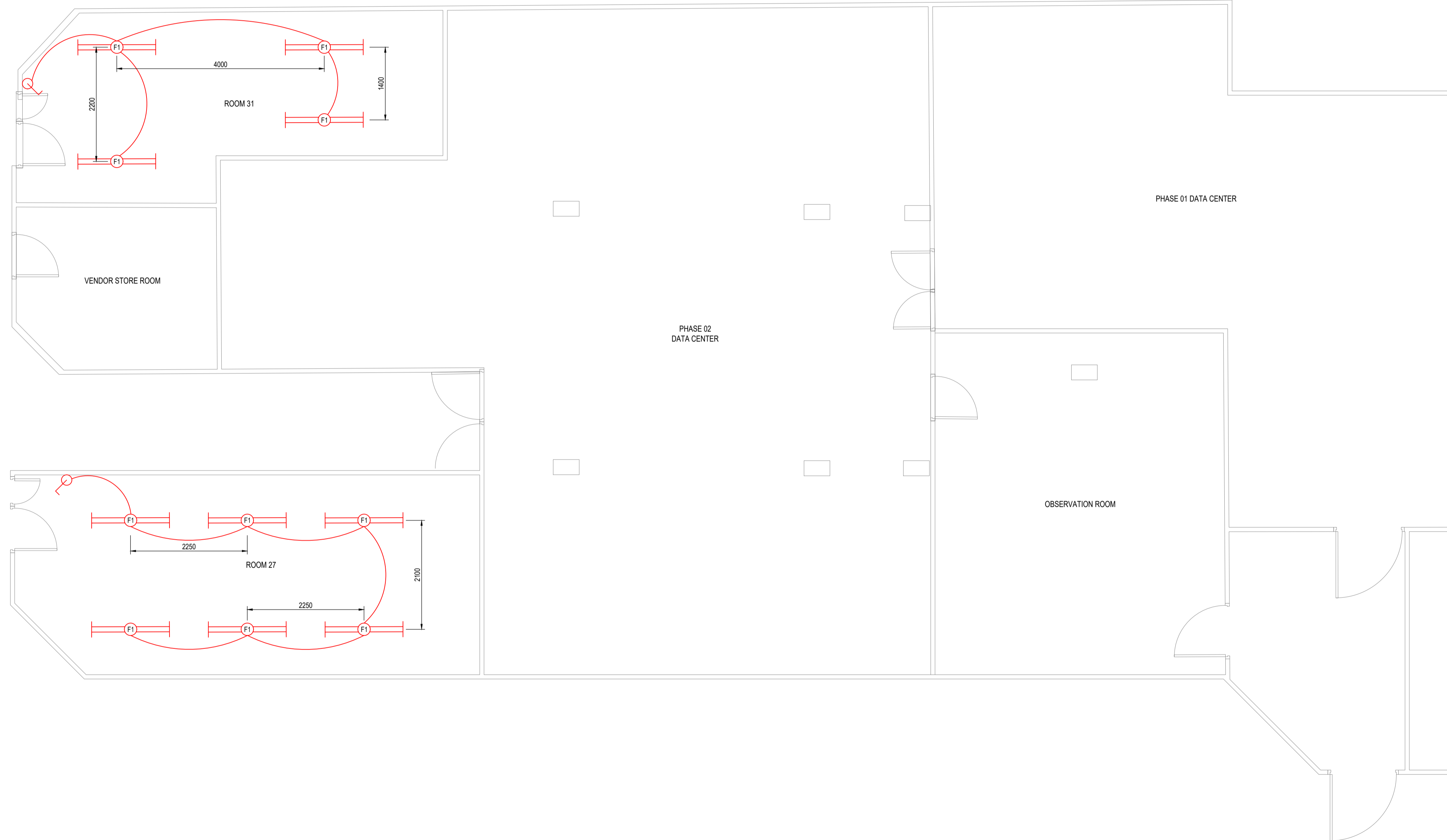


TYPE	LIGHTING LEGEND	MOUNTING TYPE
	27W, BEKA LED VAPOURLINE.	SURFACE MOUNTED ON 100mm SUSPENDED CABLE TRAY
	16A, 1 LEVER 1 WAY LIGHT SWITCH	1200mm AFFL TO CENTRE

FOR TENDER



- NOTES / LEGEND
- 1) ALL WORK TO BE CARRIED OUT STRICTLY IN ACCORDANCE WITH THE APPLICABLE SANS REGULATIONS & LOCAL AND MUNICIPAL REGULATIONS & BY-LAWS.
 - 2) NO PART OF THIS DRAWING MAY BE SCALED.
 - 3) ALL DIMENSIONS AND LEVELS GIVEN MUST BE CHECKED BEFORE COMMENCING ANY WORK. ANY DISCREPANCIES MUST BE REPORTED TO THE ENGINEER WITHOUT DELAY.
 - 4) THIS DRAWING IS ONLY FOR THE ELECTRICAL INSTALLATION PURPOSES.
 - 5) REFER TO THE LEGEND FOR DETAILS OF ELECTRICAL EQUIPMENT.
 - 6) ALL ELECTRICAL INSTALLATIONS SHALL COMPLY WITH THE LATEST SANS SPECIFICATIONS.
 - 7) THE SITE ENGINEER MUST ENSURE THAT WORK IS DONE FROM THE LATEST REVISION OF DRAWINGS.
 - 8) ALL HEIGHTS ARE GIVEN ABOVE FINAL FLOOR LEVEL.
 - 9) AC MECHANICAL POINTS TO BE CONFIRMED BY THE MECHANICAL CONTRACTOR ON SITE.
 - 10) THERE MUST BE A PHYSICAL BARRIER BETWEEN ESSENTIAL & UPS SECTIONS.
 - 11) FACEPLATE OF ESSENTIAL SECTION MUST BE WHITE & UPS A SECTION MUST BE RED & UPS B SECTION MUST BE PURPLE.
 - 12) ALL DISTRIBUTION BOARDS TO HAVE 30% SPARE CAPACITY FOR FUTURE ADDITIONS.
 - 13) THE DESIGN ON THE DRAWING IS COPYRIGHT PROTECTED & REMAINS THE PROPERTY OF THE ENGINEER.

APPROVED BY COUNCIL / CLIENT

CITY ENGINEER / CLIENT	REG. NO.	DATE

AMENDMENTS CODE	
A, B, C, J / BEFORE TENDER	I, A: BY CLIENT
T0 / TENDER DRAWING	B: BY ARCHITECT
0, 1, 2, J / AFTER TENDER	C: BY MECHANICAL OR ELECTRICAL
Z / AS BUILT	D: BY S/I
	E: BY OTHER ()

DATE	INITIAL	No./CODE	REVISION DESCRIPTION
22/06/2026	GH	T0	ISSUED FOR TENDER

OFFICES			
PROVINCE	OFFICE	PHONE	EMAIL
Free State	Porterville	(051 291-5400)	ps@bvi.co.za
	Bethlehem	(051 441-1217)	bs@bvi.co.za
	Wolmar	(051 353-9609)	wol@bvi.co.za
Northern Cape	Upington	(054 337-6000)	up@bvi.co.za
	Springs	(071 710-3614)	sp@bvi.co.za
Free State	Queen	(051 385-5502)	qn@bvi.co.za
	Engenungweni	(056 772-4112)	eng@bvi.co.za
Eastern Cape	Port Elizabeth	(041 375-4343)	pe@bvi.co.za
	East London	(043 758-3889)	ed@bvi.co.za
Western Cape	Cape Town	(021 527-7866)	cap@bvi.co.za

• ENGINEERING • PROCUREMENT • MANAGEMENT

Registration no. 1966/02/0707

CLIENT



PROJECT

CSIR ROSEBANK
ELECTRICAL SERVICES

DRAWING TITLE

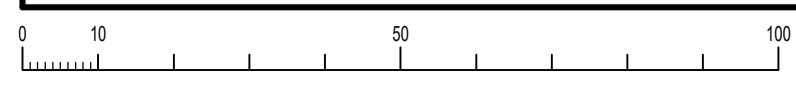
DATA CENTER
LIGHTING LAYOUT

APPROVED BY S/I

G. HALBERSTADT	20080282	22/06/2026
ENGINEER/TECHNOLOGIST	REG. NO.	DATE

SCALE	1:50 @ A1	DRAWN	WR
DESIGNED	GH	CHECKED	GH

PLAN NUMBER	REVISION NO.	DATE SAVED
32874.00C-380-01	T0	22/06/2026



32874.00-300-02 REV10.DWG