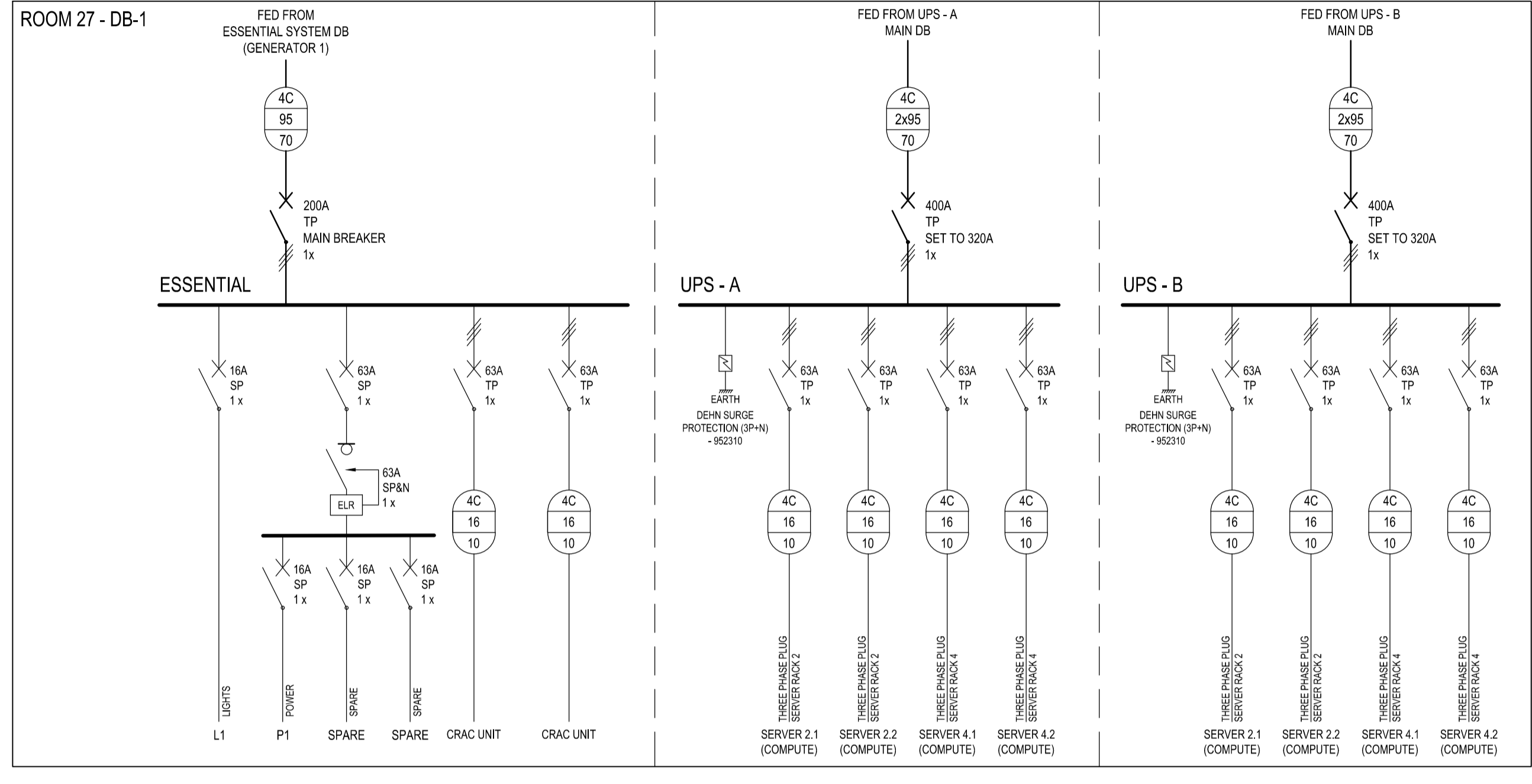
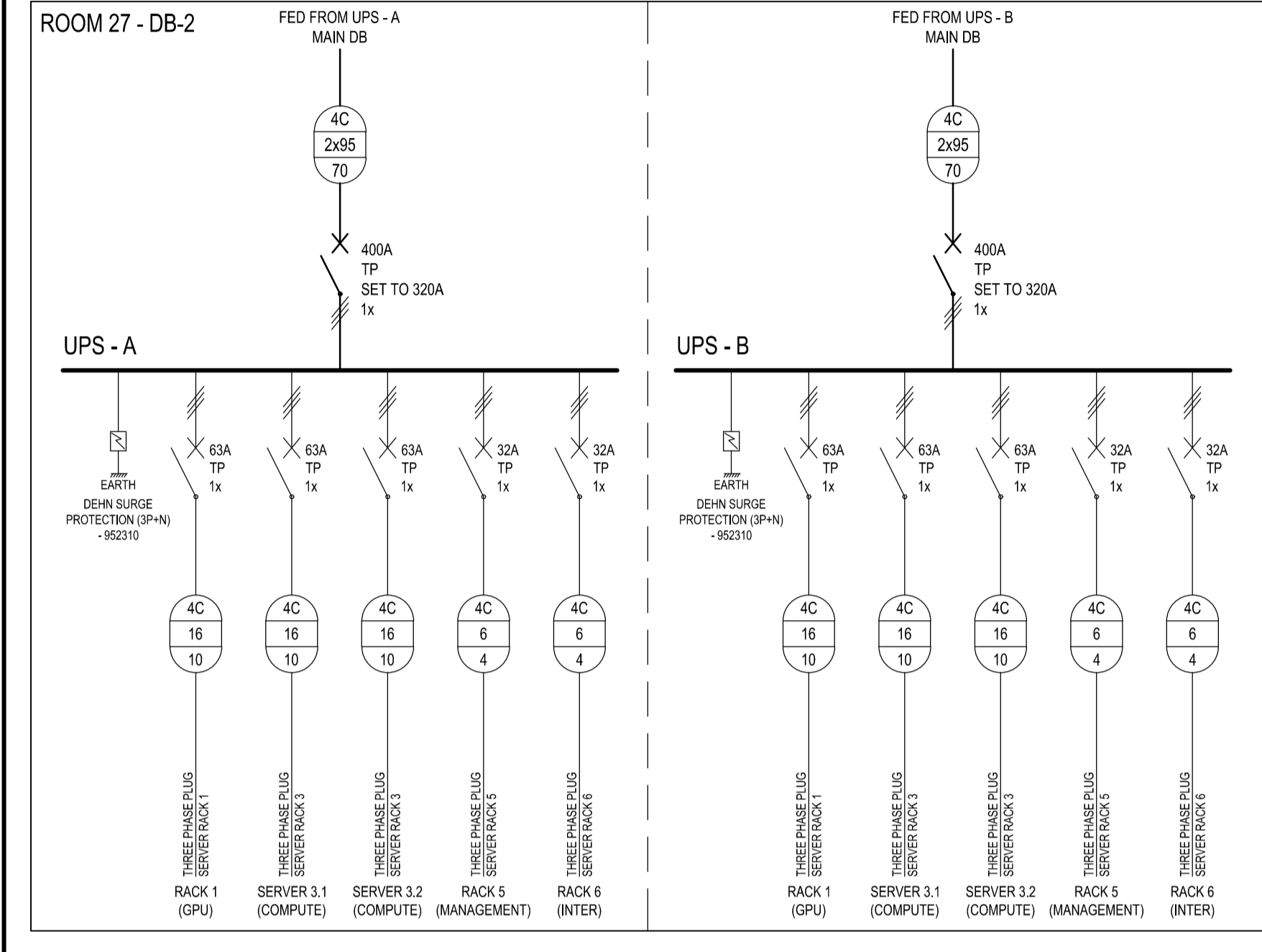


FOR TENDER

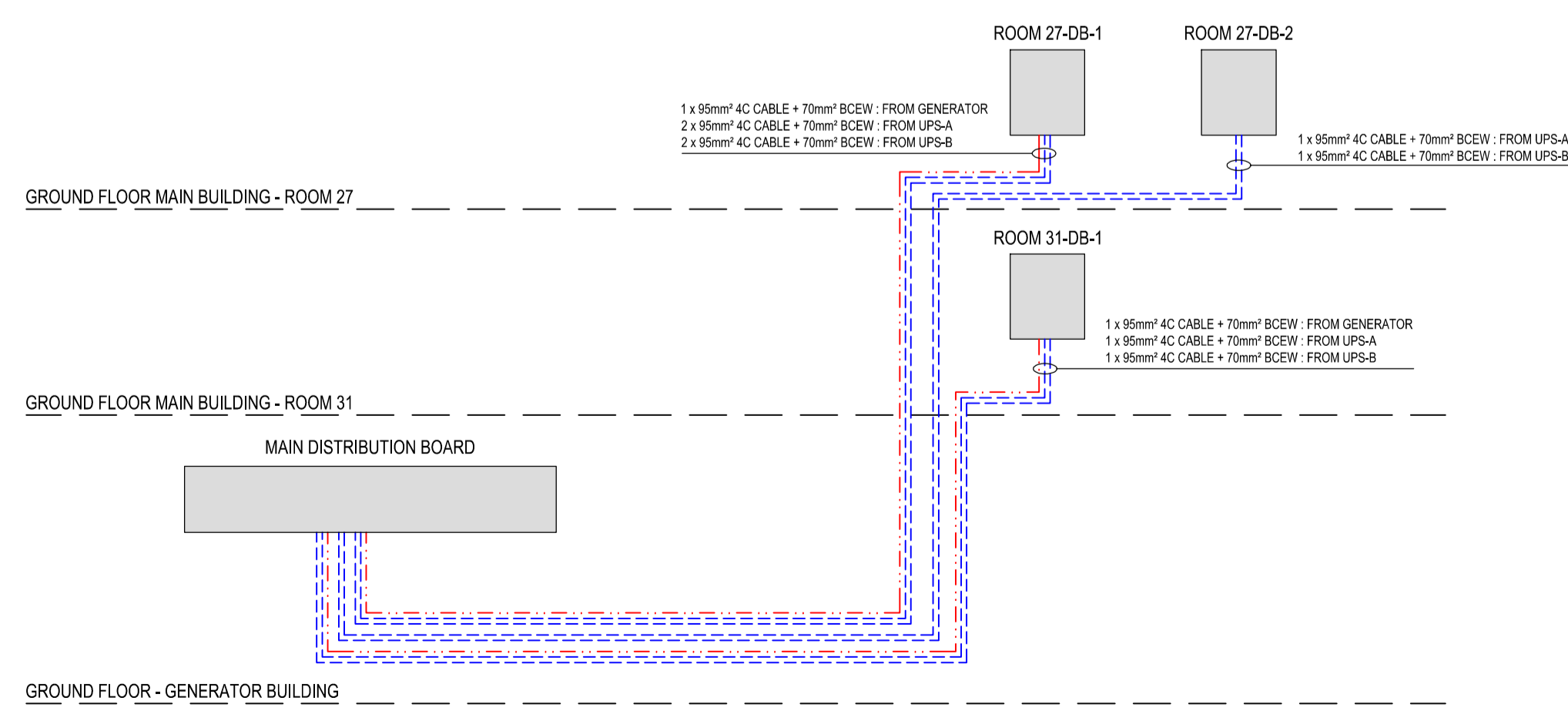
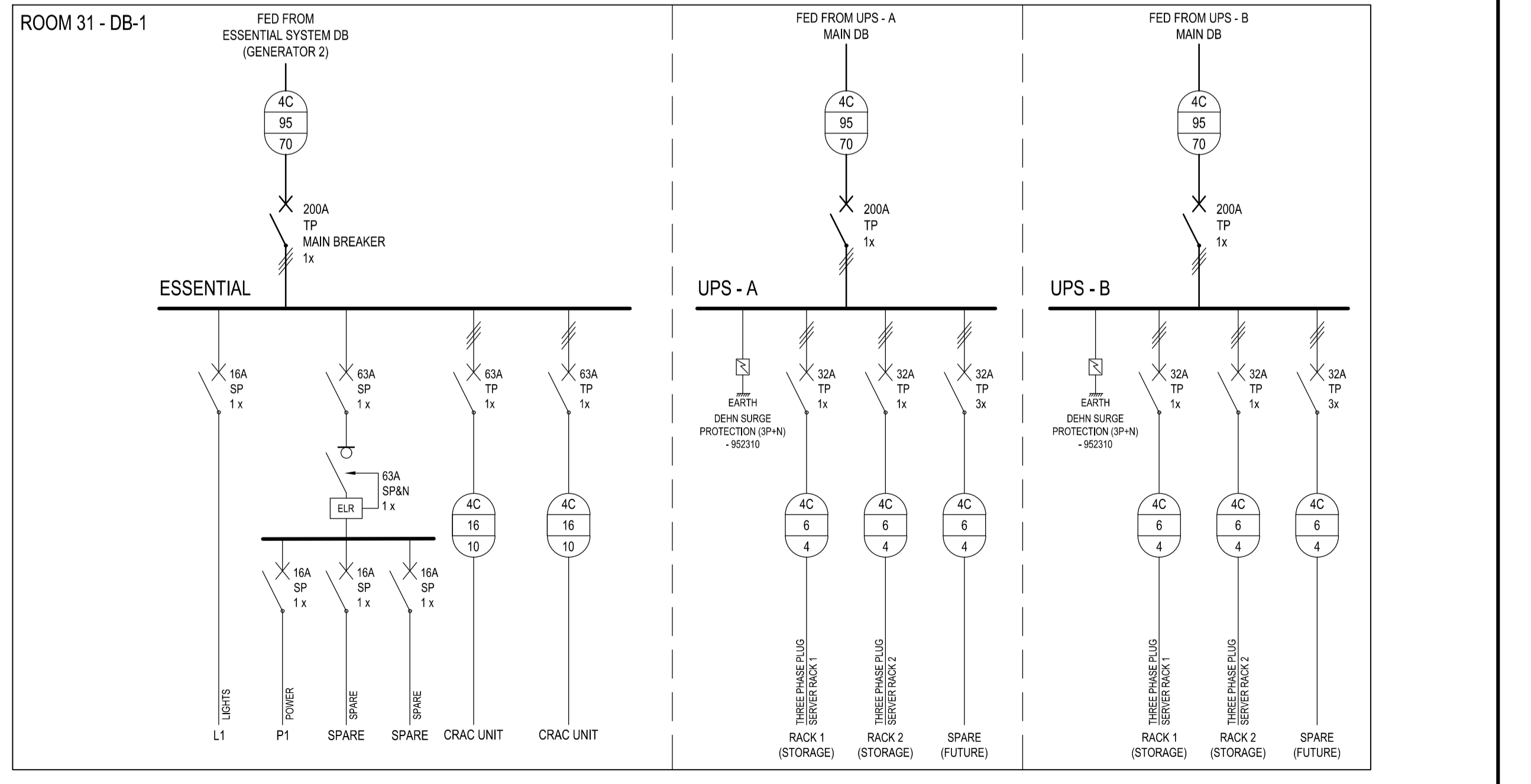
NAME	ROOM 27 - DB-1									
POSITION	ROOM 27									
INSTALLATION	FLUSH	SEMI-FLUSH	SURFACE PADLOCKABLE LEVER	FLOOR STANDING - T-HANDLE	WEATHER RESISTANT SQUARE DRIVE	INDOOR 3-POINT LOCKABLE				
DOOR LOCKS	PUSH BUTTON	CAMLOCK								
METAL TYPE	ELECTRO GALV	GALVANISED	304 SS	316 SS	316 SS	POLYETHYLENE				
METAL SIZE	1.2mm	1.6mm	2.0mm	3.0mm						
EQUIPMENT TYPE	CIRCUIT BREAKERS	CONTACTORS	METERS	TIMERS	POWER TERMINALS	CONTROL TERMINALS				
ACCESS	FRONT	REAR	BOTH							
ENTRY - INCOMING	TOP	BOTTOM	SIDE							
ENTRY - OUTGOING	TOP	BOTTOM	SIDE							
FAULT CURRENT	9kA									
COLOUR / FINISH	MDB: RED; UPS - A MDB: BLUE; UPS - B MDB: BLUE; EPOXY POWDER COATED									
MOUNTING HEIGHT	SURFACE MOUNTED									



NAME	ROOM 27 - DB-2									
POSITION	ROOM 27									
INSTALLATION	FLUSH	SEMI-FLUSH	SURFACE PADLOCKABLE LEVER	FLOOR STANDING - T-HANDLE	WEATHER RESISTANT SQUARE DRIVE	INDOOR 3-POINT LOCKABLE				
DOOR LOCKS	PUSH BUTTON	CAMLOCK								
METAL TYPE	ELECTRO GALV	GALVANISED	304 SS	316 SS	316 SS	POLYETHYLENE				
METAL SIZE	1.2mm	1.6mm	2.0mm	3.0mm						
EQUIPMENT TYPE	CIRCUIT BREAKERS	CONTACTORS	METERS	TIMERS	POWER TERMINALS	CONTROL TERMINALS				
ACCESS	FRONT	REAR	BOTH							
ENTRY - INCOMING	TOP	BOTTOM	SIDE							
ENTRY - OUTGOING	TOP	BOTTOM	SIDE							
FAULT CURRENT	9kA									
COLOUR / FINISH	UPS - A MDB: BLUE; UPS - B MDB: BLUE; EPOXY POWDER COATED									
MOUNTING HEIGHT	SURFACE MOUNTED									



NAME	ROOM 31 - DB-1									
POSITION	ROOM 31									
INSTALLATION	FLUSH	SEMI-FLUSH	SURFACE PADLOCKABLE LEVER	FLOOR STANDING - T-HANDLE	WEATHER RESISTANT SQUARE DRIVE	INDOOR 3-POINT LOCKABLE				
DOOR LOCKS	PUSH BUTTON	CAMLOCK								
METAL TYPE	ELECTRO GALV	GALVANISED	304 SS	316 SS	316 SS	POLYETHYLENE				
METAL SIZE	1.2mm	1.6mm	2.0mm	3.0mm						
EQUIPMENT TYPE	CIRCUIT BREAKERS	CONTACTORS	METERS	TIMERS	POWER TERMINALS	CONTROL TERMINALS				
ACCESS	FRONT	REAR	BOTH							
ENTRY - INCOMING	TOP	BOTTOM	SIDE							
ENTRY - OUTGOING	TOP	BOTTOM	SIDE							
FAULT CURRENT	9kA									
COLOUR / FINISH	MDB: RED; UPS - A MDB: BLUE; UPS - B MDB: BLUE; EPOXY POWDER COATED									
MOUNTING HEIGHT	SURFACE MOUNTED									



- NOTES / LEGEND
- 1) ALL WORK TO BE CARRIED OUT STRICTLY IN ACCORDANCE WITH THE APPLICABLE SANS REGULATIONS & LOCAL AND MUNICIPAL REGULATIONS & BY-LAWS.
 - 2) NO PART OF THIS DRAWING MAY BE SCALED.
 - 3) ALL DIMENSIONS AND LEVELS GIVEN MUST BE CHECKED BEFORE COMMENCING ANY WORK. ANY DISCREPANCIES MUST BE REPORTED TO THE ENGINEER WITHOUT DELAY.
 - 4) THIS DRAWING IS ONLY FOR THE ELECTRICAL INSTALLATION PURPOSES.
 - 5) REFER TO THE LEGEND FOR DETAILS OF ELECTRICAL EQUIPMENT.
 - 6) ALL ELECTRICAL INSTALLATIONS SHALL COMPLY WITH THE LATEST SANS SPECIFICATIONS.
 - 7) THE SITE ENGINEER MUST ENSURE THAT WORK IS DONE FROM THE LATEST REVISION OF DRAWINGS.
 - 8) ALL HEIGHTS ARE GIVEN ABOVE FINAL FLOOR LEVEL.
 - 9) AC MECHANICAL POINTS TO BE CONFIRMED BY THE MECHANICAL CONTRACTOR ON SITE.
 - 10) THERE MUST BE A PHYSICAL BARRIER BETWEEN ESSENTIAL & UPS SECTIONS.
 - 11) ALL DISTRIBUTION BOARDS TO HAVE 30% SPARE CAPACITY FOR FUTURE ADDITIONS.
 - 12) THE DESIGN ON THE DRAWING IS COPYRIGHT PROTECTED & REMAINS THE PROPERTY OF THE ENGINEER.

APPROVED BY COUNCIL / CLIENT

CITY ENGINEER / CLIENT	REG. NO.	DATE
AMENDMENTS CODE		
A: BY CLIENT	B: BY ARCHITECT	C: BY MECHANICAL OR ELECTRICAL
D: BY BVI	E: BY OTHER	

DATE	INITIAL	No./CODE	REVISION DESCRIPTION
22/06/2026	G.H	T0	ISSUED FOR TENDER

OFFICES			
PROVINCE	OFFICE	PHONE	EMAIL
Free State	Phokwane	(07) 201-5400	phokwane@bvi.co.za
	Stellenbosch	(021) 442-0107	stb@bvi.co.za
	Midrand	(011) 251-2698	midrand@bvi.co.za
Northern Cape	Upington	(054) 337-6800	up@bvi.co.za
	Syrinx	(027) 712-3814	syrix@bvi.co.za
Free State	Durban	(031) 284-8882	durban@bvi.co.za
	Engenbosch	(028) 774-1112	eng@bvi.co.za
Eastern Cape	Port Elizabeth	(041) 374-0443	pe@bvi.co.za
	East London	(043) 735-3889	el@bvi.co.za
Western Cape	Cape Town	(021) 851-5068	capetown@bvi.co.za

bvi 50 YEARS CELEBRATION EST 1967-2017

• ENGINEERING • PROCUREMENT • MANAGEMENT

Registration no. 1986/0019107

CLIENT

CSIR
Touching lives through innovation

PROJECT

CSIR ROSEBANK ELECTRICAL SERVICES

DRAWING TITLE

ROOM 27 & ROOM 31 DISTRIBUTION BOARDS

APPROVED BY BVI

G. HALBERSTADT	20080282	22/06/2026
ENGINEER/TECHNOLOGIST	REG. NO.	DATE

SCALE	NTS	DRAWN	WB
DESIGNED	GH	CHECKED	GH
PLAN NUMBER	REVISION NO.	DATE SAVED	
32874.00C-312-06	T0	22/06/2026	