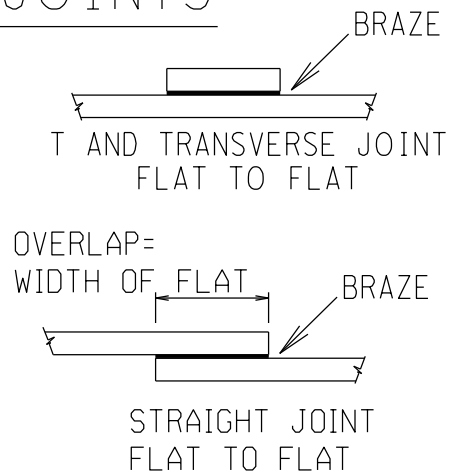
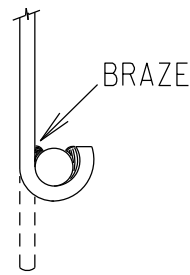
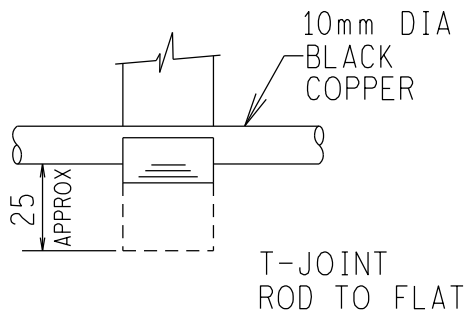
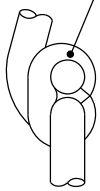
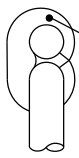


BRAZED COPPER JOINTS



1. JOINTS TO BE OXY-ACETYLENE BRAZED, USING 3mm DIA SILBRALLOY BRAZING ROD AS SUPPLIED BY AFRICAN OXYGEN LTD. NO FLUX IS REQUIRED.
2. EXOTHERMIC WELDING PROCESSES (SEE NOTE 19 ON SHEET C3)

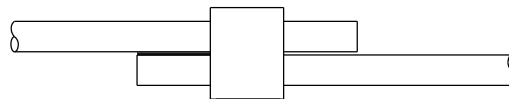
CRIMPED JOINTS



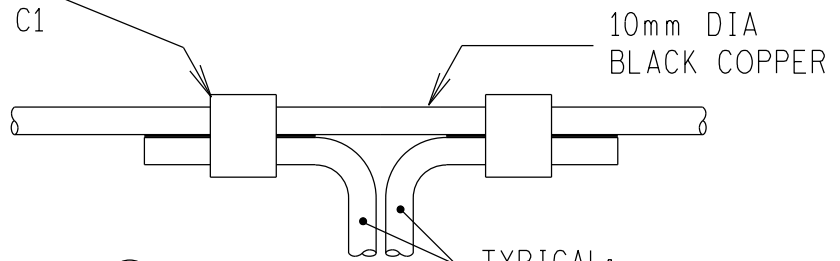
NOTE:

CRIMPED AS
PER NOTE 5
ON SHEET C1

COPPER
CRIMPET
(SEE SHT C1
NOTE 5)

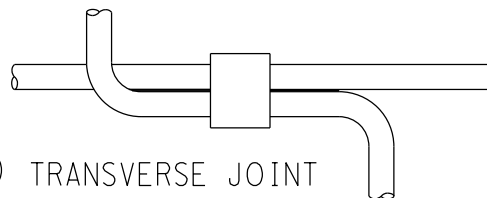


- ① STRAIGHT JOINT
ROD TO ROD
TYPICAL: MAIN EARTHMAT &
EARTHTAIL EXTENSIONS.



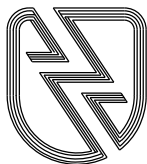
- ② T-JOINT
ROD TO ROD

TYPICAL:
ONE FOR MAIN EARTHMAT
PERIMETER JOINTS OR
FENCE EARTHTAIL
TWO FOR COLUMN AND
EQUIPMENT SUPPORTS



- ③ TRANSVERSE JOINT
ROD TO ROD
TYPICAL: MAIN EARTHMAT

THE C.A.D. REFERENCE NUMBER IS:
[100,164100393EC05.R04



ESKOM

DRAWN
GETEKEN

CHKD
NAGES

AUTH
MAS

WN
AUG 96

REV

4

DATE
DATUM

2.8.
1996

EARTHING STANDARDS

0.54/393

SHEET C5

DRG.TEK
REGISTR

PLOT SCALE: 10