



GENERAL NOTES

1. All work shall be in accordance with the latest edition of the National Electrical Code (NEC) and the National Fire Protection Association (NFPA) Code 70E.

2. All work shall be in accordance with the latest edition of the National Electrical Code (NEC) and the National Fire Protection Association (NFPA) Code 70E.

3. All work shall be in accordance with the latest edition of the National Electrical Code (NEC) and the National Fire Protection Association (NFPA) Code 70E.

PROJECT NO.	07P090BDE24
DATE	11/15/10
PROJECT NAME	LIBERTAS OFFICE PARK - BLOCK D - BASEMENT - CABLE TRAY - LAYOUT
CLIENT	AB

INGPLAN
 11111 11111 11111
 11111 11111 11111
 11111 11111 11111

LIBERTAS OFFICE PARK - BLOCK D - BASEMENT - CABLE TRAY - LAYOUT

**HUDSON AVENUE
 FRY LTD**

INGPLAN
 11111 11111 11111
 11111 11111 11111
 11111 11111 11111

LIBERTAS OFFICE PARK - BLOCK D - BASEMENT - CABLE TRAY - LAYOUT

**HUDSON AVENUE
 FRY LTD**

INGPLAN
 11111 11111 11111
 11111 11111 11111
 11111 11111 11111

LIBERTAS OFFICE PARK - BLOCK D - BASEMENT - CABLE TRAY - LAYOUT

**HUDSON AVENUE
 FRY LTD**

INGPLAN
 11111 11111 11111
 11111 11111 11111
 11111 11111 11111

LIBERTAS OFFICE PARK - BLOCK D - BASEMENT - CABLE TRAY - LAYOUT

**HUDSON AVENUE
 FRY LTD**

INGPLAN
 11111 11111 11111
 11111 11111 11111
 11111 11111 11111

FIRST FLOOR PLAN
Scale: 1/16" = 1'-0" (A) Part



GENERAL NOTES

1. ALL ELECTRICAL, LIGHTING & LEADERS SHALL BE INSTALLED IN ACCORDANCE WITH THE NATIONAL ELECTRICAL CODE (NEC) AND THE NATIONAL FIRE ALARM & SIGNALING CODE (NFPA 72).

2. ALL ELECTRICAL WORK SHALL BE PERFORMED BY A LICENSED ELECTRICIAN.

3. ALL ELECTRICAL WORK SHALL BE SUBJECT TO INSPECTION AND APPROVAL BY THE LOCAL ELECTRICAL INSPECTOR.

4. ALL ELECTRICAL WORK SHALL BE SUBJECT TO INSPECTION AND APPROVAL BY THE LOCAL FIRE DEPARTMENT.

5. ALL ELECTRICAL WORK SHALL BE SUBJECT TO INSPECTION AND APPROVAL BY THE LOCAL BUILDING DEPARTMENT.

6. ALL ELECTRICAL WORK SHALL BE SUBJECT TO INSPECTION AND APPROVAL BY THE LOCAL HEALTH DEPARTMENT.

7. ALL ELECTRICAL WORK SHALL BE SUBJECT TO INSPECTION AND APPROVAL BY THE LOCAL ENVIRONMENTAL AGENCY.

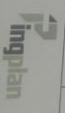
8. ALL ELECTRICAL WORK SHALL BE SUBJECT TO INSPECTION AND APPROVAL BY THE LOCAL POLICE DEPARTMENT.

9. ALL ELECTRICAL WORK SHALL BE SUBJECT TO INSPECTION AND APPROVAL BY THE LOCAL COURT SYSTEM.

10. ALL ELECTRICAL WORK SHALL BE SUBJECT TO INSPECTION AND APPROVAL BY THE LOCAL LEGISLATURE.

NO.	DESCRIPTION	DATE	BY
1	REVISION		
2	REVISION		
3	REVISION		
4	REVISION		
5	REVISION		
6	REVISION		
7	REVISION		
8	REVISION		
9	REVISION		
10	REVISION		

HUDSON AVENUE
Pty (Ltd)

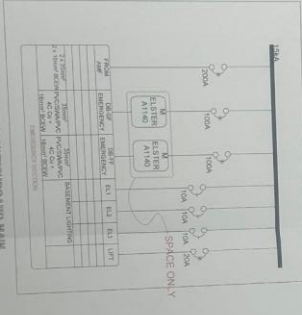
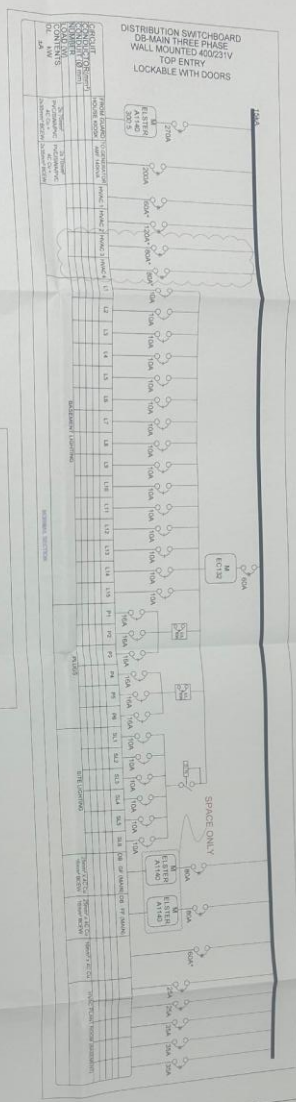


1000 BROADWAY, SUITE 1000, NEW YORK, NY 10018
TEL: 212 512 1000
WWW.INQPLAN.COM

LIBERTAS OFFICE PARK
- BLOCK D -

- SANAS LIBERTAS -
FIRST FLOOR
ELECTRICAL
REQUIREMENTS
LAYOUT

SCALE: 1:100
DATE: 10/11/11
DRAWN BY: [Name]
CHECKED BY: [Name]
PROJECT NO: 07P080/BD/E30
SHEET NO: AB



GENERAL NOTES

- 1. ALL WORK SHALL BE IN ACCORDANCE WITH THE NATIONAL ELECTRICAL REGULATIONS (NERS) AND THE NATIONAL ELECTRICAL CODE (NEC).
- 2. ALL WORK SHALL BE IN ACCORDANCE WITH THE NATIONAL ELECTRICAL REGULATIONS (NERS) AND THE NATIONAL ELECTRICAL CODE (NEC).
- 3. ALL WORK SHALL BE IN ACCORDANCE WITH THE NATIONAL ELECTRICAL REGULATIONS (NERS) AND THE NATIONAL ELECTRICAL CODE (NEC).

NO.	REVISIONS
1	ISSUED FOR TENDER
2	REVISED TO REFLECT THE LATEST REVISIONS
3	REVISED TO REFLECT THE LATEST REVISIONS
4	REVISED TO REFLECT THE LATEST REVISIONS
5	REVISED TO REFLECT THE LATEST REVISIONS
6	REVISED TO REFLECT THE LATEST REVISIONS
7	REVISED TO REFLECT THE LATEST REVISIONS
8	REVISED TO REFLECT THE LATEST REVISIONS
9	REVISED TO REFLECT THE LATEST REVISIONS
10	REVISED TO REFLECT THE LATEST REVISIONS
11	REVISED TO REFLECT THE LATEST REVISIONS
12	REVISED TO REFLECT THE LATEST REVISIONS
13	REVISED TO REFLECT THE LATEST REVISIONS
14	REVISED TO REFLECT THE LATEST REVISIONS
15	REVISED TO REFLECT THE LATEST REVISIONS
16	REVISED TO REFLECT THE LATEST REVISIONS
17	REVISED TO REFLECT THE LATEST REVISIONS
18	REVISED TO REFLECT THE LATEST REVISIONS
19	REVISED TO REFLECT THE LATEST REVISIONS
20	REVISED TO REFLECT THE LATEST REVISIONS
21	REVISED TO REFLECT THE LATEST REVISIONS
22	REVISED TO REFLECT THE LATEST REVISIONS
23	REVISED TO REFLECT THE LATEST REVISIONS
24	REVISED TO REFLECT THE LATEST REVISIONS
25	REVISED TO REFLECT THE LATEST REVISIONS
26	REVISED TO REFLECT THE LATEST REVISIONS
27	REVISED TO REFLECT THE LATEST REVISIONS
28	REVISED TO REFLECT THE LATEST REVISIONS
29	REVISED TO REFLECT THE LATEST REVISIONS
30	REVISED TO REFLECT THE LATEST REVISIONS
31	REVISED TO REFLECT THE LATEST REVISIONS
32	REVISED TO REFLECT THE LATEST REVISIONS
33	REVISED TO REFLECT THE LATEST REVISIONS
34	REVISED TO REFLECT THE LATEST REVISIONS
35	REVISED TO REFLECT THE LATEST REVISIONS
36	REVISED TO REFLECT THE LATEST REVISIONS
37	REVISED TO REFLECT THE LATEST REVISIONS
38	REVISED TO REFLECT THE LATEST REVISIONS

**Hudson Avenue
Pty Ltd**



**LIBERTAS
BLOCK D**

**DISTRIBUTION
SWITCHBOARD-
MAIN**

NTS

07/P/080/BD/ET

AB



LIGHTING LEGEND

Symbol	Height	Color	Class
	2 x 58W T8	WHITE	CLASS 1
	2 x 38W T8	BLACK	CLASS 1
	1 x 58W T8	WHITE	CLASS 1

GENERAL NOTES

1. ALL WORK SHALL BE IN ACCORDANCE WITH THE LATEST EDITIONS OF THE NATIONAL ELECTRICAL CODE (NEC) AND THE NATIONAL FIRE ALARM AND SIGNAL CODE (NFPA 72).

2. THE CONTRACTOR SHALL BE RESPONSIBLE FOR OBTAINING ALL NECESSARY PERMITS AND APPROVALS FROM THE LOCAL AUTHORITIES.

3. ALL MATERIALS AND WORKMANSHIP SHALL BE SUBJECT TO INSPECTION AND APPROVAL BY THE LOCAL AUTHORITIES.

4. THE CONTRACTOR SHALL MAINTAIN ACCESS TO ALL EXISTING UTILITIES AND STRUCTURES AT ALL TIMES.

5. ALL WORK SHALL BE COMPLETED WITHIN THE SPECIFIED TIME FRAME.

REVISIONS

NO.	DATE	DESCRIPTION

HUDSON RENAISSANCE
Pty/Ltd



LIBERTY'S OFFICE PARK
BLOCK D

BASEMENT
LIGHTING LAYOUT

SCALE: 1:150	DATE: 07/20/2012
PROJECT: LIBERTY'S OFFICE PARK	CLIENT: HUDSON RENAISSANCE
DESIGNER: [Name]	CHECKED: [Name]
DRAWN: [Name]	DATE: 07/20/2012



GENERAL NOTES

1. ALL UNITS SHALL BE INSTALLED WITH APPROXIMATE COORDINATES AS SHOWN - BY HVAC CONTRACTOR. ALL THE AWAY UNITS TO BE INSTALLED FLUSH AGAINST SOFFIT BY HVAC CONTRACTOR.

ALL THE AWAY UNITS TO BE INSTALLED WITH APPROXIMATE COORDINATES AS SHOWN - BY HVAC CONTRACTOR. ALL THE AWAY UNITS TO BE INSTALLED FLUSH AGAINST SOFFIT BY HVAC CONTRACTOR.

SINCE THESE UNITS ARE PROVIDED BY AWAY FROM THE CONTRACTOR, THE CONTRACTOR SHALL BE RESPONSIBLE FOR THE PROTECTION OF THESE UNITS.

NO.	DATE	REVISIONS
1	07/27/20	ISSUED FOR PERMIT
2	08/11/20	ISSUED FOR PERMIT
3	08/11/20	ISSUED FOR PERMIT
4	08/11/20	ISSUED FOR PERMIT
5	08/11/20	ISSUED FOR PERMIT
6	08/11/20	ISSUED FOR PERMIT
7	08/11/20	ISSUED FOR PERMIT
8	08/11/20	ISSUED FOR PERMIT
9	08/11/20	ISSUED FOR PERMIT
10	08/11/20	ISSUED FOR PERMIT

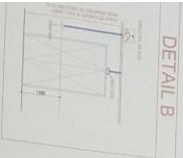
HUDSON AVENUE
Ply Ltd



LIBERTAS OFFICE PARK
- BLOCK D -

- FIRST FLOOR -
CABLE TRAY LAYOUT

PROJECT NO.	077P090BDE16
SCALE	1:100
DATE	08/11/20
DESIGNER	INGPLAN
CHECKER	AB



DETAIL B

REFER TO DRAWING E20
REFER TO DRAWING E21



SMALL POWER LAYOUT

HDMI LINK

HDMI LINK TO SCREEN ON WALL



DETAIL A



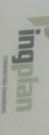
GENERAL NOTES

- 1. ALL WORK SHALL BE IN ACCORDANCE WITH THE NATIONAL ELECTRICAL CODE (NEC) AND THE NATIONAL FIRE ALARM AND SIGNALING CODE (NFPA 72).
- 2. ALL WORK SHALL BE IN ACCORDANCE WITH THE MANUFACTURER'S INSTALLATION INSTRUCTIONS.
- 3. ALL WORK SHALL BE IN ACCORDANCE WITH THE PROJECT SPECIFICATIONS.
- 4. ALL WORK SHALL BE IN ACCORDANCE WITH THE LOCAL AND STATE REGULATIONS.
- 5. ALL WORK SHALL BE IN ACCORDANCE WITH THE PROJECT SCHEDULE.
- 6. ALL WORK SHALL BE IN ACCORDANCE WITH THE PROJECT BUDGET.
- 7. ALL WORK SHALL BE IN ACCORDANCE WITH THE PROJECT QUALITY CONTROL PLAN.
- 8. ALL WORK SHALL BE IN ACCORDANCE WITH THE PROJECT RISK MANAGEMENT PLAN.
- 9. ALL WORK SHALL BE IN ACCORDANCE WITH THE PROJECT COMMUNICATIONS PLAN.
- 10. ALL WORK SHALL BE IN ACCORDANCE WITH THE PROJECT DOCUMENTATION PLAN.

REVISIONS

NO.	DATE	DESCRIPTION
1	2017-03-24	ISSUED FOR PERMITTING
2		
3		
4		
5		
6		
7		
8		
9		
10		

HADSSON AVENUE
Ply (Lb)

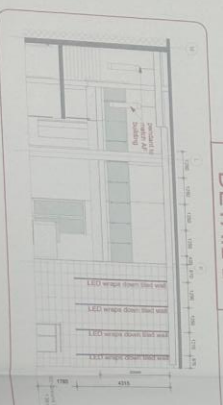


LIBERTYAS OFFICE PARK
- BLOCK D-

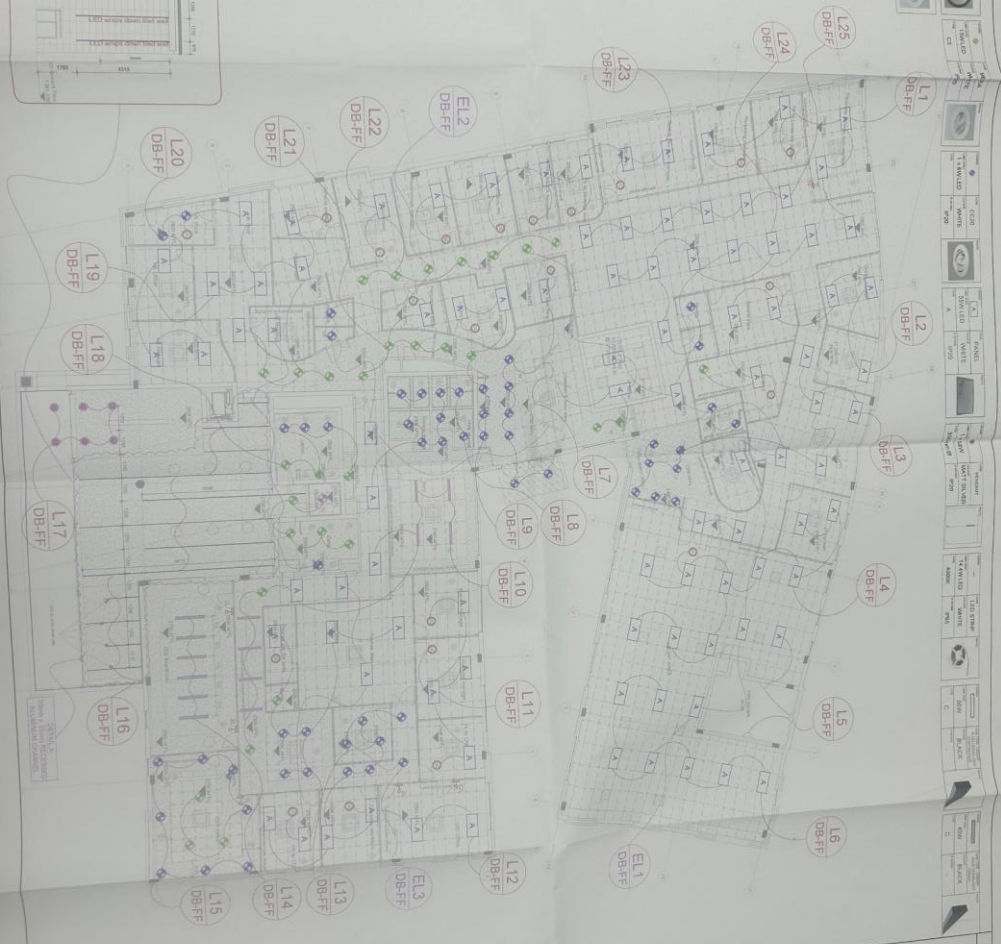
SCALE: 1/8" = 1'-0"
1:100

PROJECT NO: 07P060/BDIES
AB

FINISH	DESCRIPTION	FINISH	DESCRIPTION
CLASS 1	WHITE	CLASS 1	WHITE
CLASS 2	BLACK	CLASS 2	BLACK
CLASS 3	WHITE	CLASS 3	WHITE
CLASS 4	BLACK	CLASS 4	BLACK
CLASS 5	WHITE	CLASS 5	WHITE
CLASS 6	BLACK	CLASS 6	BLACK
CLASS 7	WHITE	CLASS 7	WHITE
CLASS 8	BLACK	CLASS 8	BLACK
CLASS 9	WHITE	CLASS 9	WHITE
CLASS 10	BLACK	CLASS 10	BLACK
CLASS 11	WHITE	CLASS 11	WHITE
CLASS 12	BLACK	CLASS 12	BLACK
CLASS 13	WHITE	CLASS 13	WHITE
CLASS 14	BLACK	CLASS 14	BLACK
CLASS 15	WHITE	CLASS 15	WHITE
CLASS 16	BLACK	CLASS 16	BLACK
CLASS 17	WHITE	CLASS 17	WHITE
CLASS 18	BLACK	CLASS 18	BLACK
CLASS 19	WHITE	CLASS 19	WHITE
CLASS 20	BLACK	CLASS 20	BLACK



DETAIL B



GENERAL NOTES

NO.	DESCRIPTION
1	SEE FINISH SCHEDULE
2	SEE FINISH SCHEDULE
3	SEE FINISH SCHEDULE
4	SEE FINISH SCHEDULE
5	SEE FINISH SCHEDULE
6	SEE FINISH SCHEDULE
7	SEE FINISH SCHEDULE
8	SEE FINISH SCHEDULE
9	SEE FINISH SCHEDULE
10	SEE FINISH SCHEDULE
11	SEE FINISH SCHEDULE
12	SEE FINISH SCHEDULE
13	SEE FINISH SCHEDULE
14	SEE FINISH SCHEDULE
15	SEE FINISH SCHEDULE
16	SEE FINISH SCHEDULE
17	SEE FINISH SCHEDULE
18	SEE FINISH SCHEDULE
19	SEE FINISH SCHEDULE
20	SEE FINISH SCHEDULE
21	SEE FINISH SCHEDULE
22	SEE FINISH SCHEDULE
23	SEE FINISH SCHEDULE
24	SEE FINISH SCHEDULE
25	SEE FINISH SCHEDULE

NO.	DESCRIPTION
1	SEE FINISH SCHEDULE
2	SEE FINISH SCHEDULE
3	SEE FINISH SCHEDULE
4	SEE FINISH SCHEDULE
5	SEE FINISH SCHEDULE
6	SEE FINISH SCHEDULE
7	SEE FINISH SCHEDULE
8	SEE FINISH SCHEDULE
9	SEE FINISH SCHEDULE
10	SEE FINISH SCHEDULE
11	SEE FINISH SCHEDULE
12	SEE FINISH SCHEDULE
13	SEE FINISH SCHEDULE
14	SEE FINISH SCHEDULE
15	SEE FINISH SCHEDULE
16	SEE FINISH SCHEDULE
17	SEE FINISH SCHEDULE
18	SEE FINISH SCHEDULE
19	SEE FINISH SCHEDULE
20	SEE FINISH SCHEDULE
21	SEE FINISH SCHEDULE
22	SEE FINISH SCHEDULE
23	SEE FINISH SCHEDULE
24	SEE FINISH SCHEDULE
25	SEE FINISH SCHEDULE

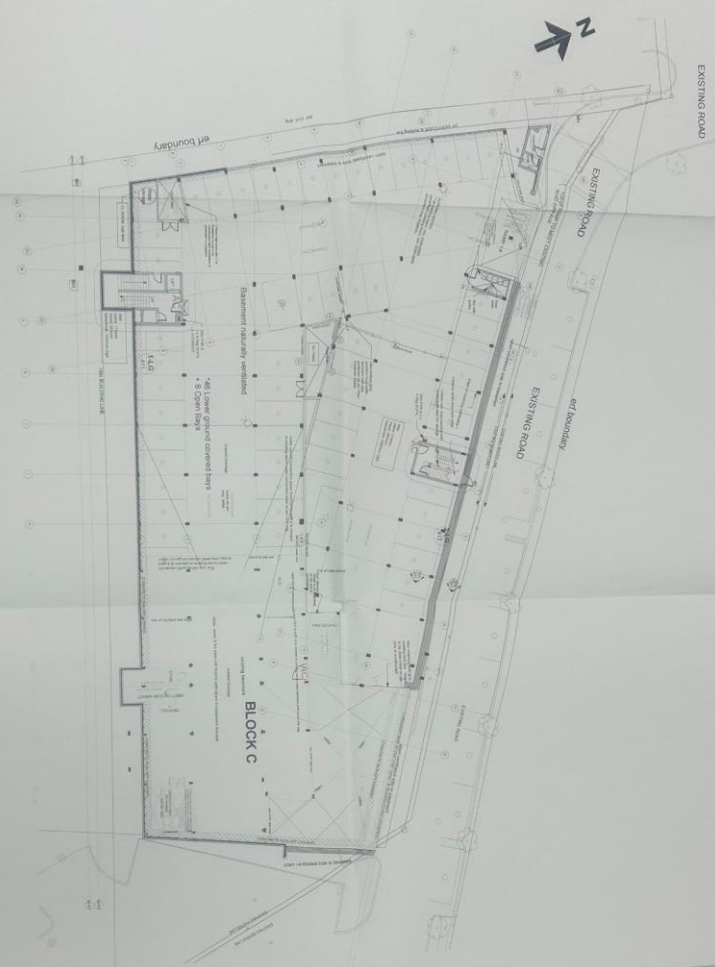
HUDSON AVENUE
Ply (L10)



LIBERTIAS OFFICE PARK
- BLOCK D -

FIRST FLOOR
- LIGHTING LAYOUT

SCALE: 1/4" = 1'-0"	DATE: 07/11/2017
PROJECT: LIBERTIAS OFFICE PARK	DESIGNER: [Name]
CLIENT: [Name]	DATE: 07/11/2017
PROJECT NO: 07P060/B01E4	DESIGNER: [Name]
CLIENT: [Name]	DATE: 07/11/2017



BASEMENT FLOOR PLAN
 Block C
 Scale: 1:150 on A1 print

ELECTRICAL LIGHTING LEGEND	
1	1.100
2	2.100
3	3.100
4	4.100
5	5.100
6	6.100
7	7.100
8	8.100
9	9.100
10	10.100
11	11.100
12	12.100
13	13.100
14	14.100
15	15.100
16	16.100
17	17.100
18	18.100
19	19.100
20	20.100
21	21.100
22	22.100
23	23.100
24	24.100
25	25.100
26	26.100
27	27.100
28	28.100
29	29.100
30	30.100
31	31.100
32	32.100
33	33.100
34	34.100
35	35.100
36	36.100
37	37.100
38	38.100
39	39.100
40	40.100
41	41.100
42	42.100
43	43.100
44	44.100
45	45.100
46	46.100
47	47.100
48	48.100
49	49.100
50	50.100
51	51.100
52	52.100
53	53.100
54	54.100
55	55.100
56	56.100
57	57.100
58	58.100
59	59.100
60	60.100
61	61.100
62	62.100
63	63.100
64	64.100
65	65.100
66	66.100
67	67.100
68	68.100
69	69.100
70	70.100
71	71.100
72	72.100
73	73.100
74	74.100
75	75.100
76	76.100
77	77.100
78	78.100
79	79.100
80	80.100
81	81.100
82	82.100
83	83.100
84	84.100
85	85.100
86	86.100
87	87.100
88	88.100
89	89.100
90	90.100
91	91.100
92	92.100
93	93.100
94	94.100
95	95.100
96	96.100
97	97.100
98	98.100
99	99.100
100	100.100

GENERAL NOTES

1. All work shall be in accordance with the relevant parts of the SANS 10400 series of standards.

2. The contractor shall be responsible for obtaining all necessary permits and approvals from the relevant authorities.

3. The contractor shall ensure that all work is completed in accordance with the approved drawings and specifications.

4. The contractor shall maintain access to all services and structures at all times.

5. The contractor shall ensure that all work is completed in a timely and efficient manner.

6. The contractor shall ensure that all work is completed in a safe and sound manner.

7. The contractor shall ensure that all work is completed in a professional and courteous manner.

8. The contractor shall ensure that all work is completed in a clean and tidy manner.

9. The contractor shall ensure that all work is completed in a cost-effective manner.

10. The contractor shall ensure that all work is completed in a sustainable manner.

HUDSON AVENUE
 Pty (LTD)



LIBERTAS OFFICE PARK
 - BLOCK D-

SANNAS LIBERTAS
 BASEMENT
 ELECTRICAL
 REQUIREMENTS
 LAYOUT

SCALE: 1:150	DATE: 2018-11-15
PROJECT NO: 07P0300BD/E31	CLIENT: AB