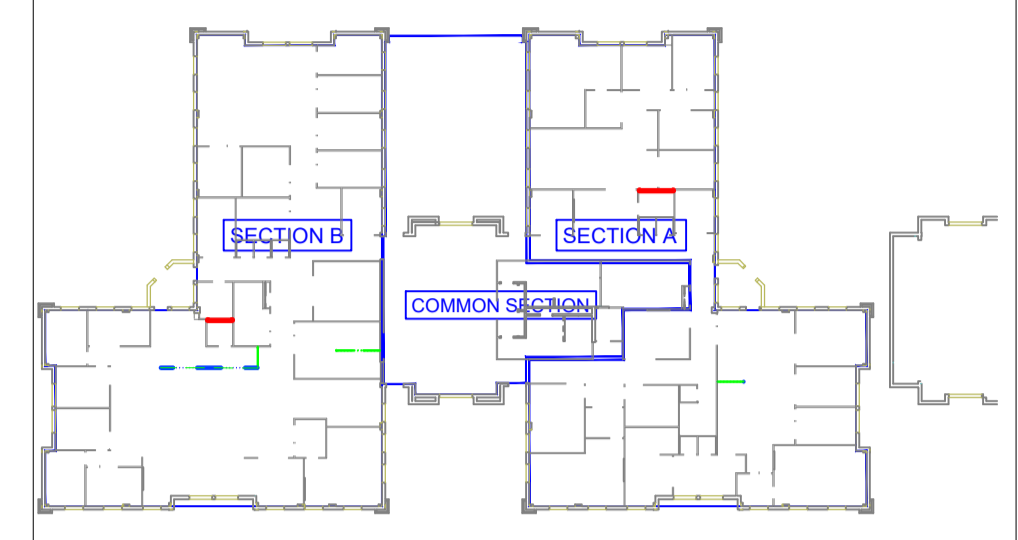


LEGEND

- CABLE TRAY AT 200mm ABOVE CEILING. SIZE AS INDICATED
- P9000 TRUNKING FOR LIGHTING/ POWER AT 200mm ABOVE CEILING
- P8000 TRUNKING FOR COMMS AT 200mm ABOVE CEILING
- P2000 TRUNKING FOR LIGHTING AT 200mm ABOVE CEILING
- P2000 TRUNKING FOR COMMS AT 200mm ABOVE CEILING



01	ISSUED FOR CONSTRUCTION	06.06.2026
00	ISSUED FOR CONSTRUCTION	02.02.2026
REV	REVISION DETAILS	DATE

CLIENT



MHSC
Mine Health and Safety Council

Harraway House
10 & 12th Floor Pearce Str.
Berea
East London, 5201

Tel: 043 711 1600
Fax: 041 403 0401

P.O Box
East London
5201

APPROVAL

DESIGN ENGINEER: M.BUTHELEZI
2021300956

SIGNATURE:


DATE SIGNED: 06.05.2026

DESIGN REVIEWER: P.MLANGENI

SIGNATURE:

DATE SIGNED: 06.05.2026

CONSULTING ENGINEERS



Gauteng Office: 1 Mellis road, Mellis court office park, Rivonia Sandton 2128
Tel: 010 500 1486
www.henryfagan.com

Western Cape Office: Suite A2, Ground Floor Building 2, Nordic Park 2, 17 Boundary Road, Century City, 7441
Tel: 021 423 0873
www.henryfagan.com

PROJECT
MHSC OFFICE
BUILDING RENOVATION

DRAWING TITLE
UPPER GROUND
WIREWAY LAYOUT

ISSUED FOR CONSTRUCTION

DRAWN BY		DRAWING CHECKED BY	
B.T		P.M	
SCALE	DATE	SHEET SIZE	
1:100	02.02.2026	A1	

PROJECT - ORIG - ZONE - LEVEL - TYPE - DISC - CLASS - NUMBER - REVISION
25002 - HF - ZZ - L1 - DR - EE - DD - 1005 - 01

© COPYRIGHT RESERVED
THE CONTENT OF THIS DOCUMENT IS CONFIDENTIAL AND MAY NOT BE REPRODUCED WITHOUT THE AUTHORISATION OF HENRY FAGAN CONSULTING ENGINEERS.

