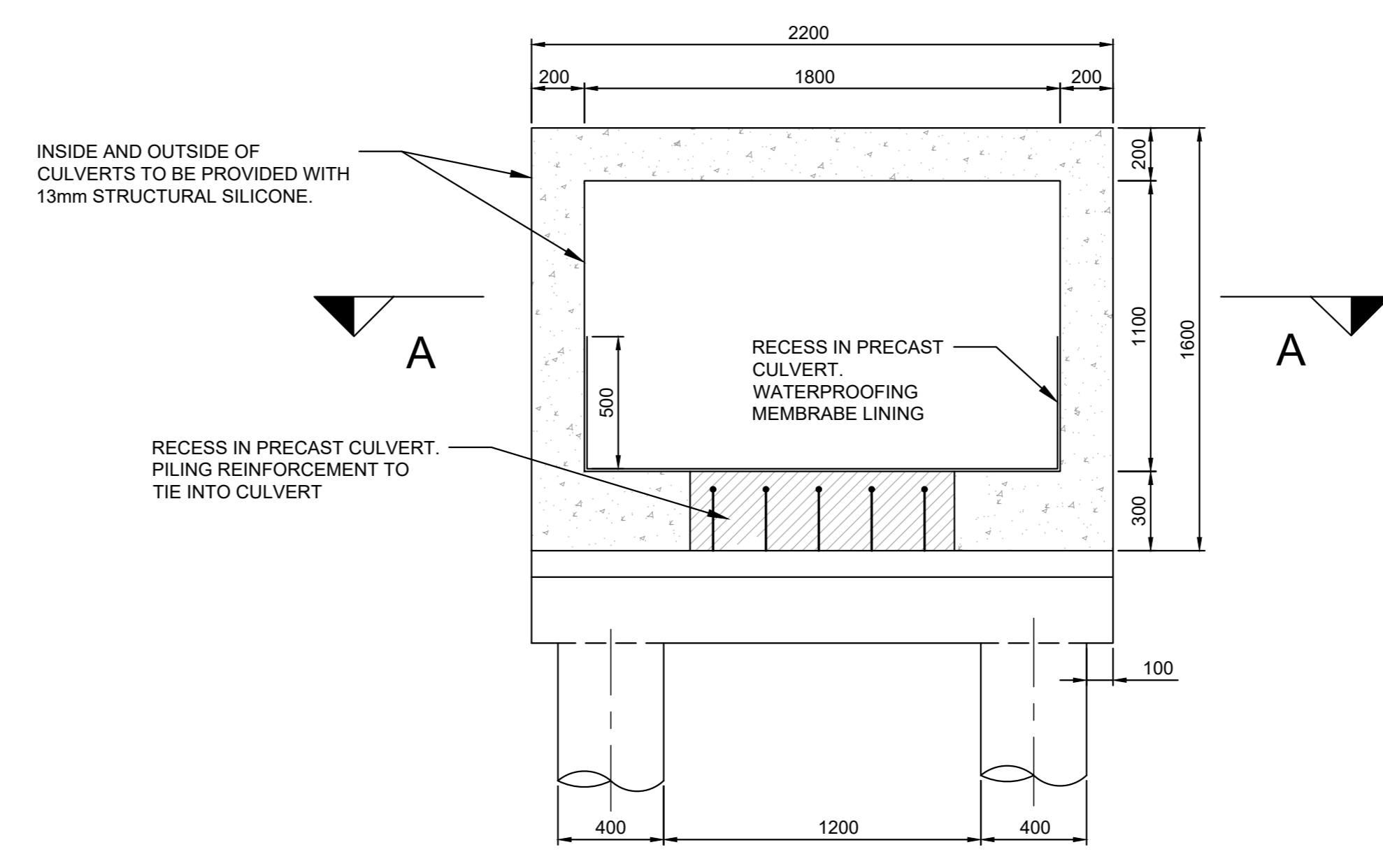
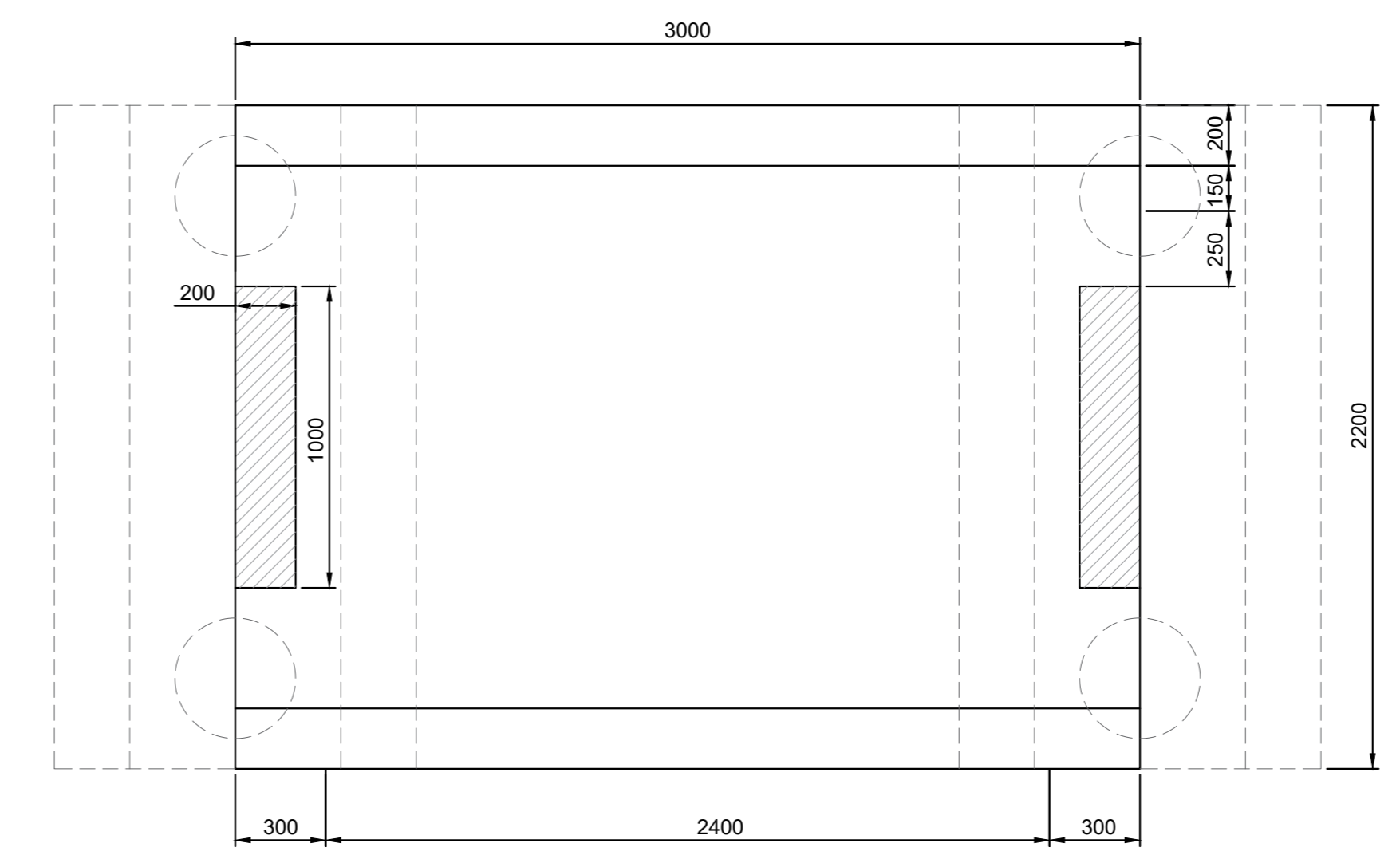


LOCALITY
 Y: -4232.351 X: 3304945.627

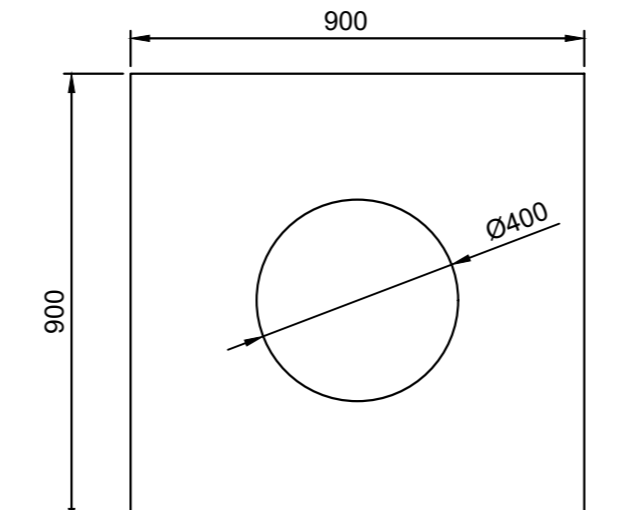
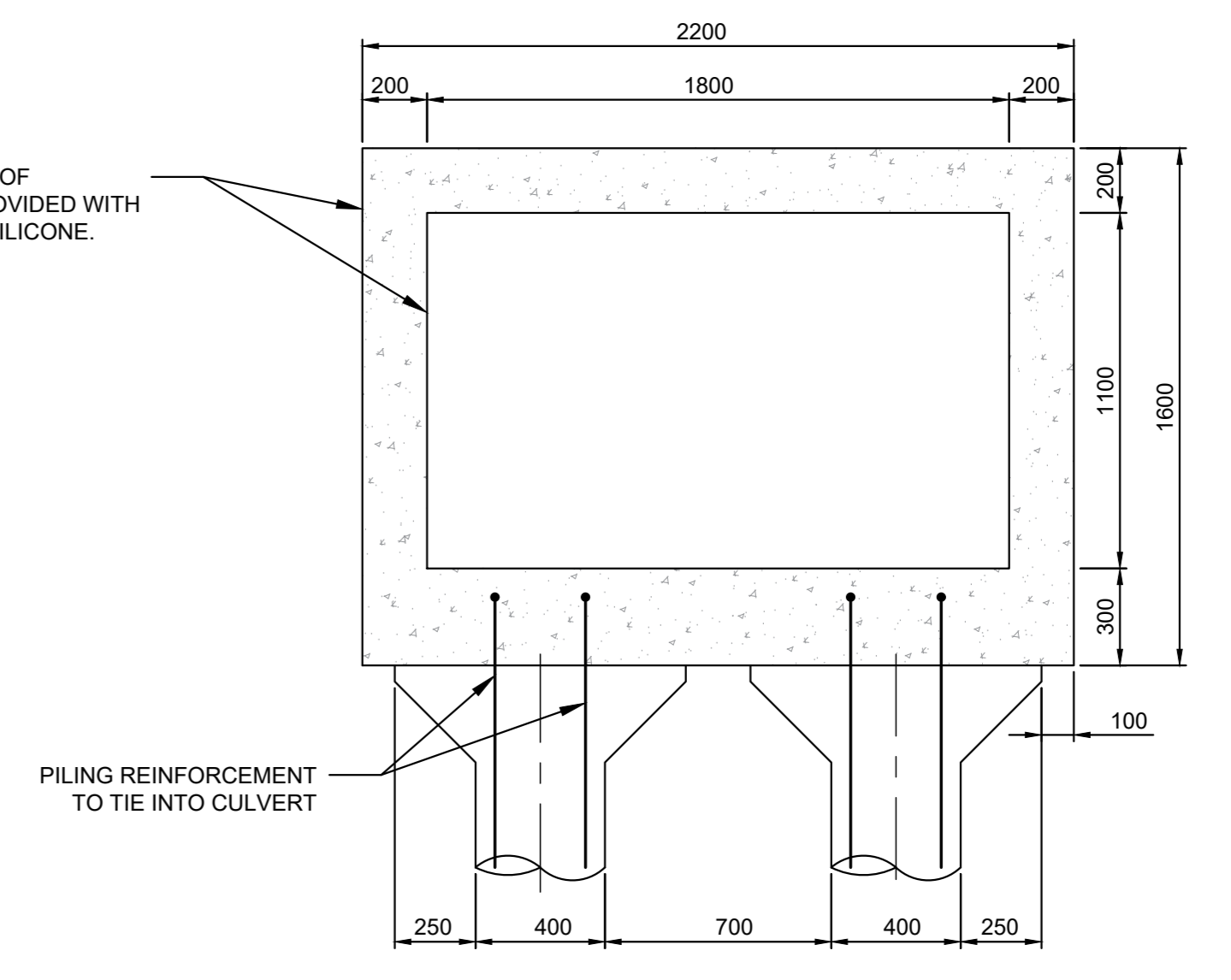
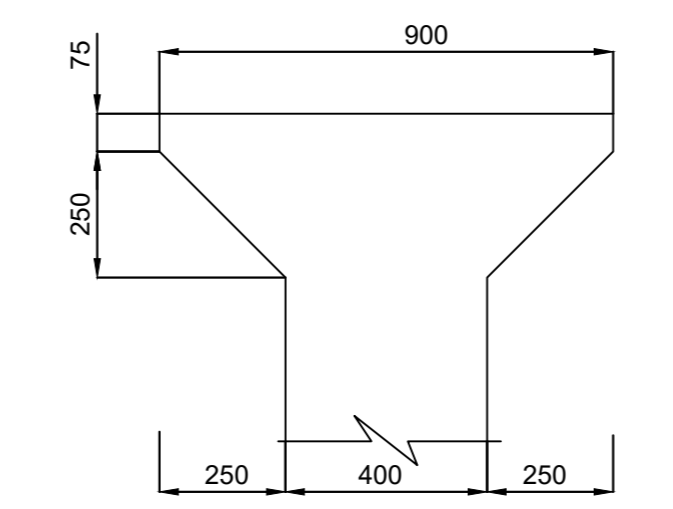
SETTING OUT CO-ORDINATES		
DESCRIPTION	Y COORDINATES	X COORDINATES
CL 1	-4216.8090	3304943.4295
CL 2	-4281.8378	3304918.6219



- NOTES**
- MATERIAL STRENGTHS AND STRESSES**
 CONCRETE: CLASS (MPa/mm)
 CULVERT :40/19
 PILES :40/19
 CONCRETE TO INCLUDE PENATRON OR XYPEX CRACK HEALING ADDITIVE OR APPROVED SIMILAR.
 REINFORCEMENT:
 HIGH TENSILE STEEL :450 MPa GALVANISED
 - COVER**
 CULVERT :60 mm
 CFA PILES :75 mm
 - CONCRETE FINISH**
 CULVERT :CLASS 3a
 - PILING SYSTEM**
 PILE TYPE :400 DIA. CFA
 THE TOP 3m SECTION OF THE PILE LENGTH TO BE SHUTTERED. (ACTUAL LENGTHS TO BE CONFIRMED)
 - GENERAL**
 BEACH LEVELS WILL VARY CONSIDERABLY WITH WIND, TIDES AND SURF CONDITIONS.
TENDER TO CONSIDER THE METHOD OF CONSTRUCTION THAT SATISFY ENVIRONMENTAL CONSTRAINTS AS SET OUT IN THE ENVIRONMENTAL MANAGEMENT PLAN, INCLUDING FABRICATION AND TRANSPORTATION

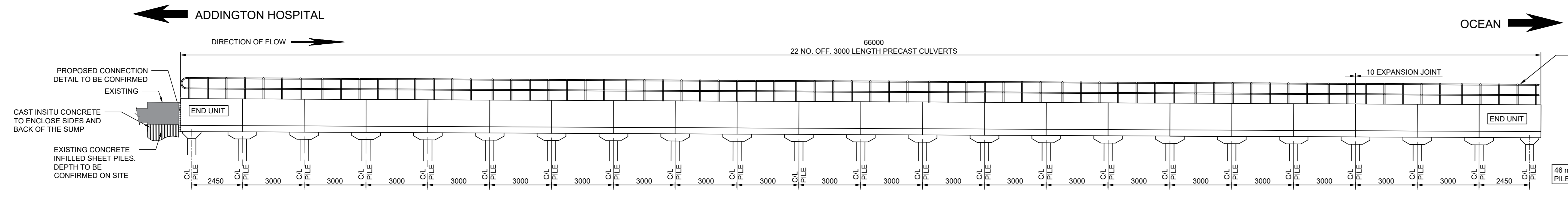
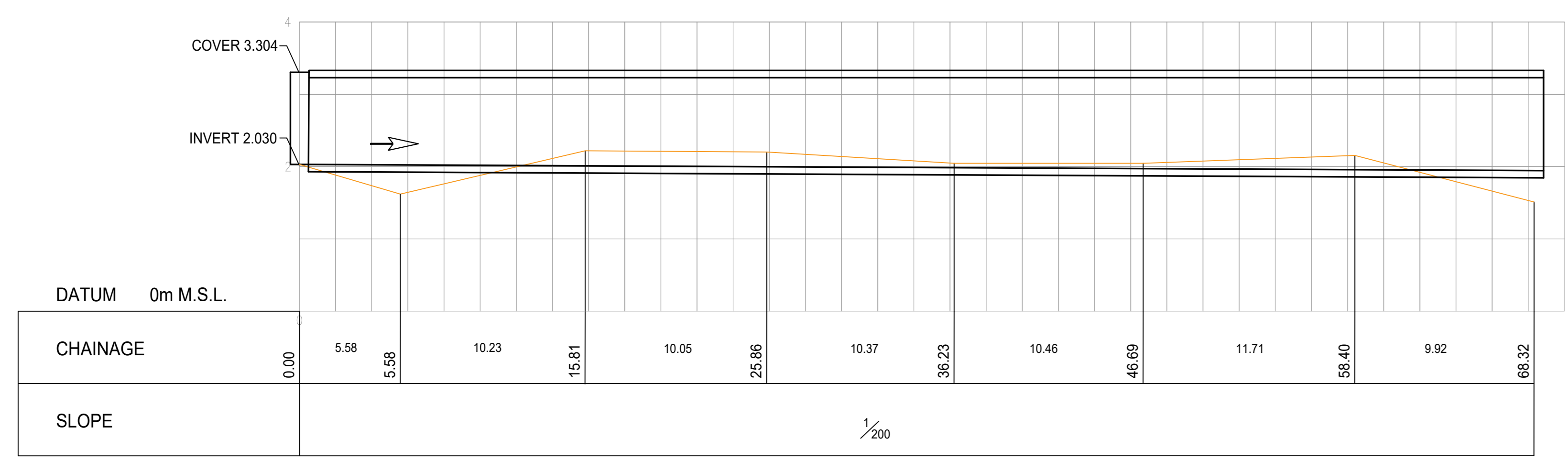
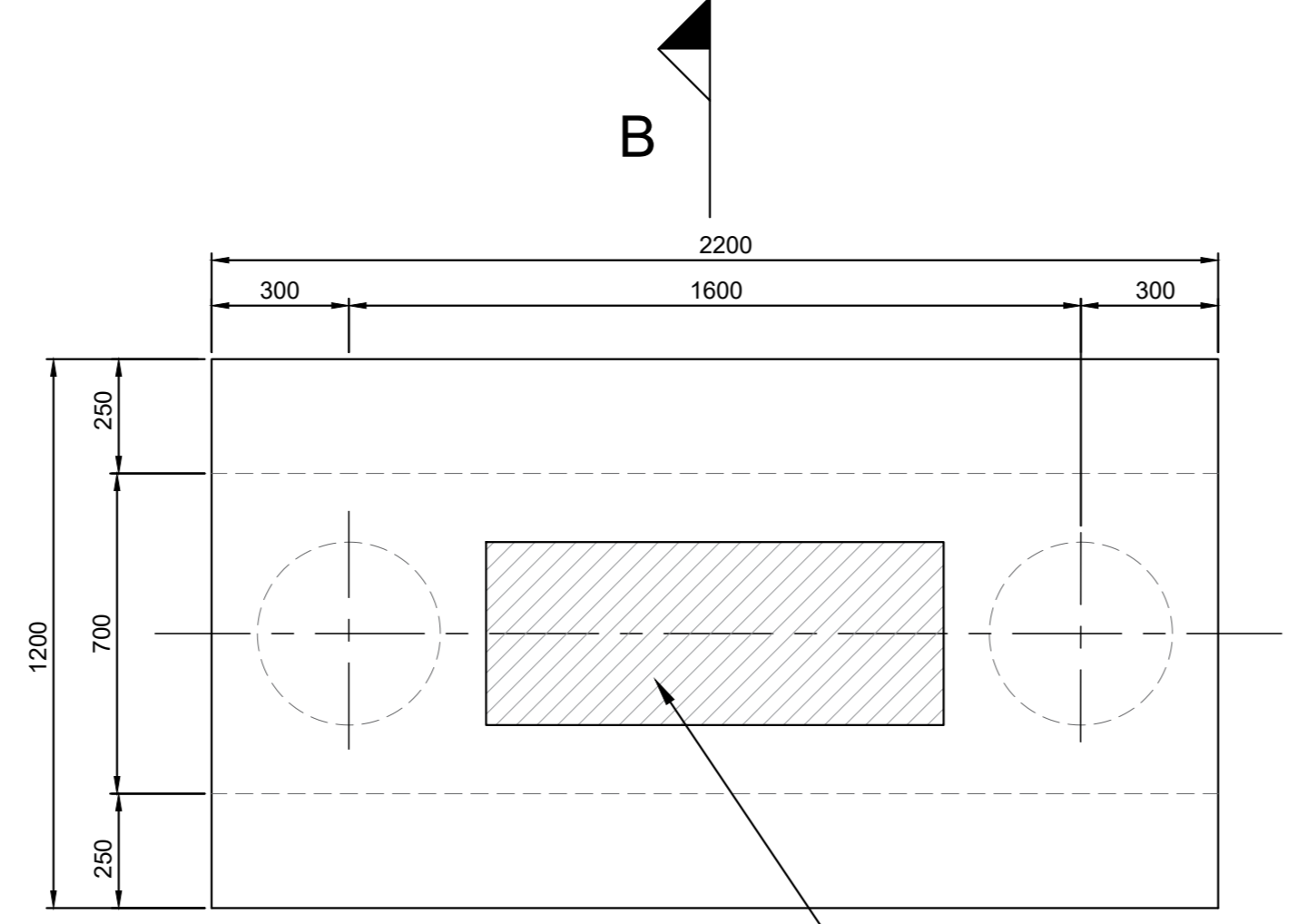
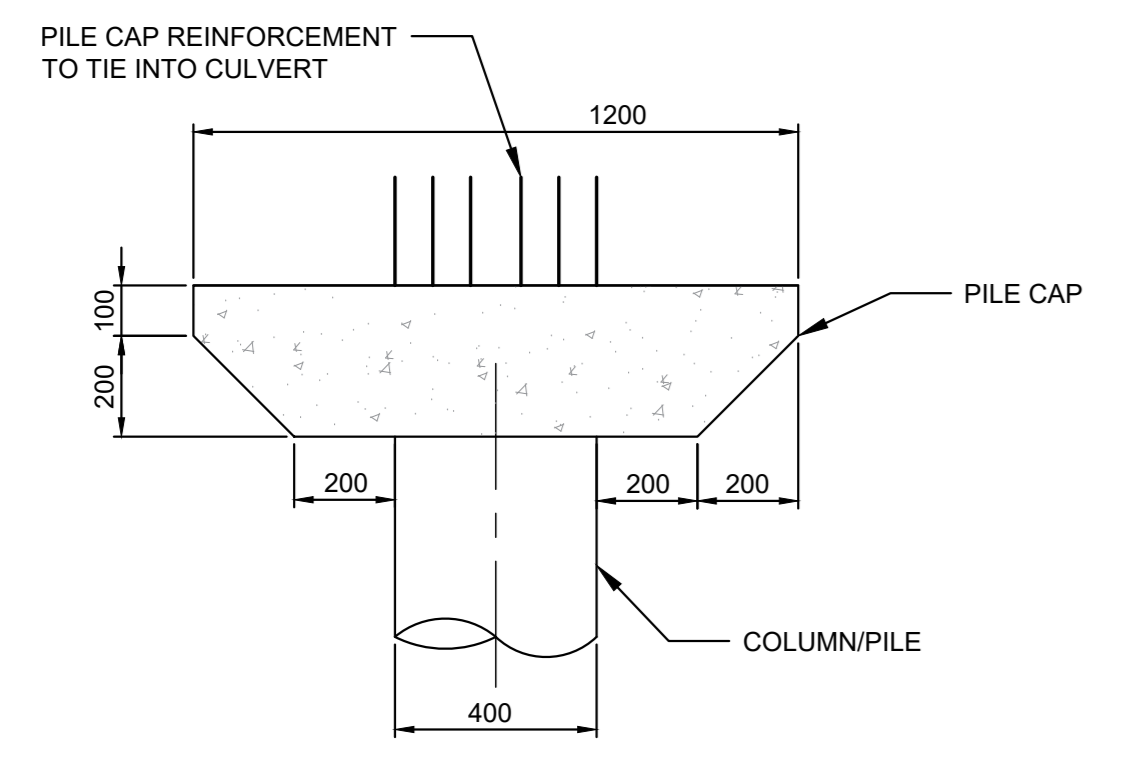
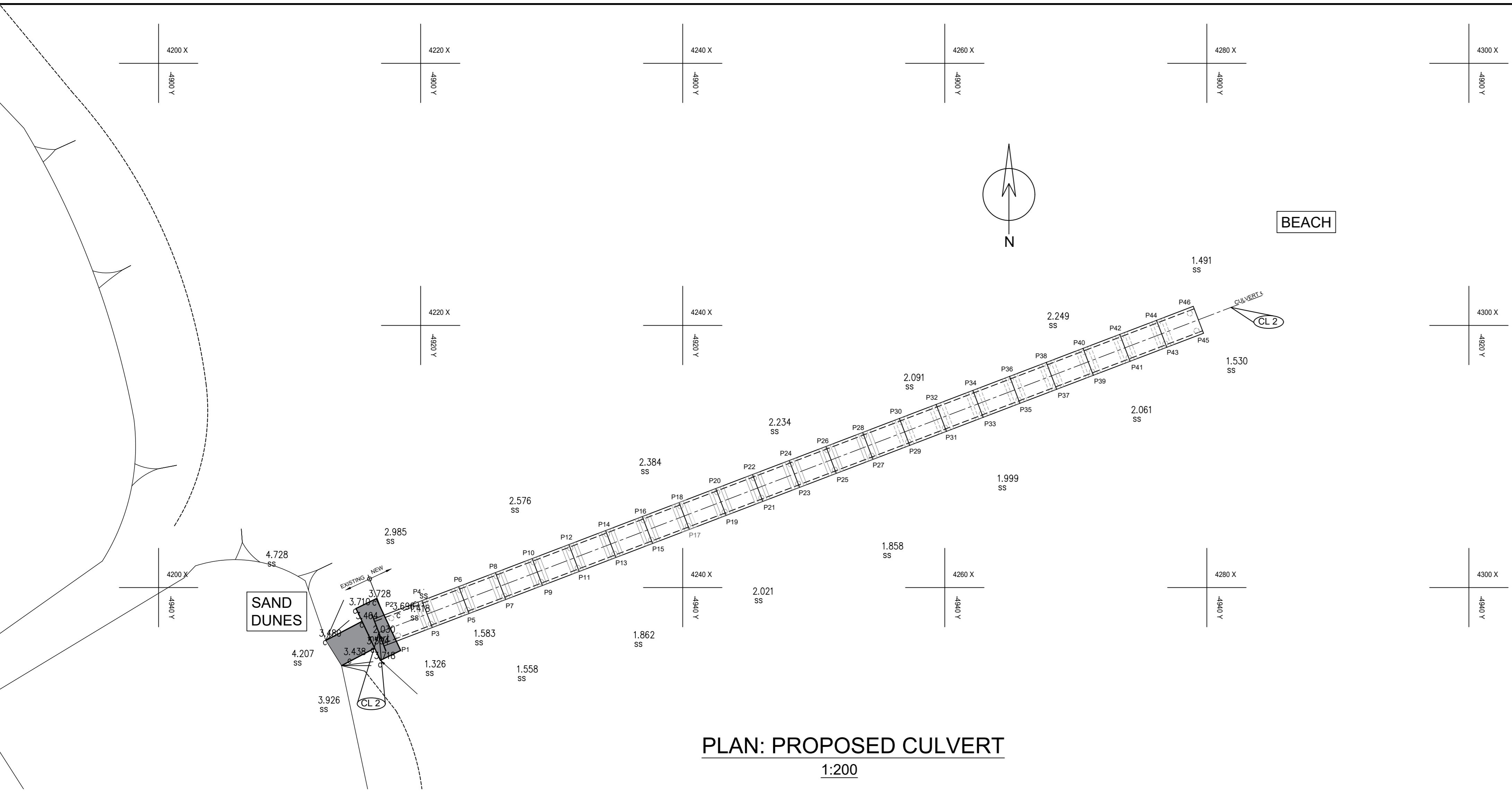


SECTION A-A
 1:25



TYPICAL SECTION OF PILE HEAD
 1:15

TYPICAL SECTION THROUGH PRECAST CULVERT END UNITS
 1:20



V1	24/04/2024	ISSUED FOR TENDER
Revision:	Date	Description
NOTE: No construction work to commence until land and servitude acquisitions have been completed.		
Acquisitions completed:		
Date	Engineer	
UNDERGROUND SERVICES CHECKED		
SERVICE	DATE	SIGNATURE
S.W DRAINS		
SEWERS		
WATER MAINS		
G.P.O CABLES		
ELECTRIC CABLES		
S.A.R. CABLES		
E.S.C. CABLES		
OIL PIPE LINE		
NOTE: Only underground services affected by new construction works shown. Care must be taken during excavations for road foundations, trenches etc. to avoid damage to underground services such as sewers, drains, cables, water mains and connections. Wherever possible these must be located before work proceeds.		
Contract No.	1D-28528	
Project Title	HOSPITAL ROAD / ADDINGTON STORMWATER OUTFALL	
Drawing Title	GENERAL ARRANGMENT	
SCALES	AS SHOWN	Date: 23/04/2024
Designed:	H MBINA	Checked: P.G. FENTON / J. HARRIPERSHAD
Drawn:	H MBINA	Surveyed: SURVEY DEPT.
Manager:	P.G. FENTON	
Deputy Head:	S. MASONGO	
HEAD : ENGINEERING		
Drawing No.	49336	Sheet of Rev 01 01 V1

FOR TENDER PURPOSE