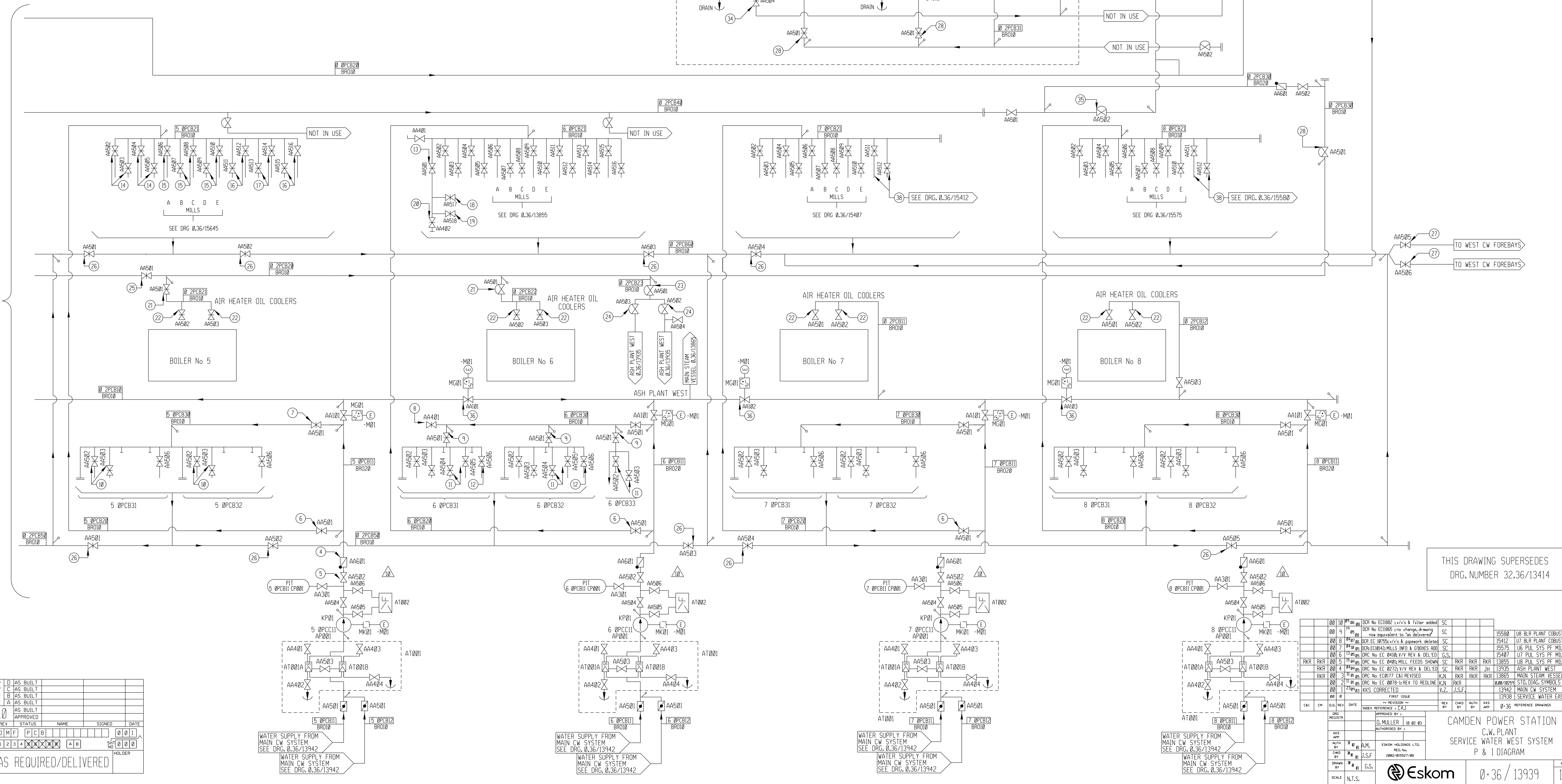
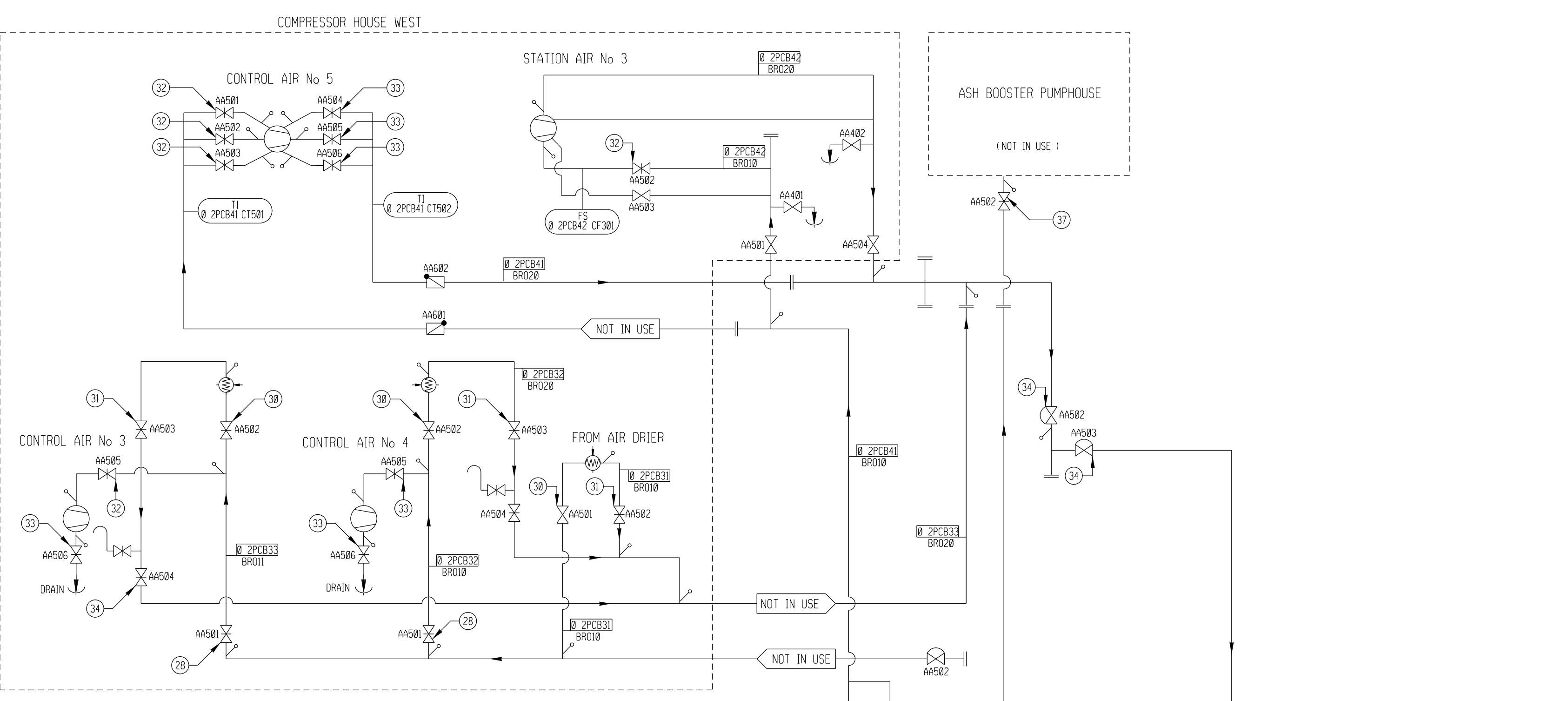


LEGEND

- 1 UNIT COOLING PUMP SUCTION ISOL V/V
- 2 UNIT COOLING PUMP SUCTION STRAINER
- 3 UNIT COOLING PUMP
- 4 UNIT COOLING PUMP DISCHARGE N.R.V.
- 5 UNIT COOLING PUMP DISCH MOTORISED ISOL V/V
- 6 BOILER COOLING WATER SUPPLY MAIN ISOL V/V
- 7 TURBINE COOLING WATER SUPPLY MAIN ISOL V/V
- 8 TURBINE COOLING WATER SUPPLY FLUSHING V/V
- 9 EFP AND SFP CW DISTR MAIN ISOL V/V
- 10 CW TO EFP MOTOR BEARINGS ISOL V/V
- 11 NOT IN USE
- 12 CW TO EFP BEARING OIL COOLER ISOL V/V
- 13 CW TO BOILER PANEL INTRUMENT ISOL V/V
- 14 CW TO LH AND RH FD FANS BEARING ISOL V/V
- 15 CW TO MILLS A-E GB OIL COOLER ISOL V/V
- 16 CW TO LH AND RH ID FANS BEARING ISOL V/V
- 17 CW TO LH AND RH ID FANS CPL OIL COOLERS ISOL V/V
- 18 CW TO ECON SAMPLING COOLER ISOL V/V
- 19 CW PRESS TX ISOL V/V
- 20 CW MANIFOLD DRAIN AND FLUSHING V/V
- 21 CW TO AIR HEATER MAIN ISOL V/V
- 22 CW TO AIR HEATER BEARING OIL COOLER ISOL V/V
- 23 CW TO ASH PLANT WEST MAIN ISOL V/V
- 24 ASH PLANT SEALING WATER PUMPS SERVICE ISOL V/V
- 25 SERVICE WATER BALANCE MAIN ISOL V/V
- 26 CW RETURN SECTION ISOL V/V
- 27 CW RETURN ISOL V/V
- 28 CW TO COMP MAIN ISOL V/V
- 29 CW TO AND FROM COMP NR/V
- 30 CW TO COMP AIR COOLER ISOL V/V
- 31 COMP AIR COOLER CW OUTLET ISOL V/V
- 32 CW TO COMP ISOL V/V
- 33 COMP CW OUTLET ISOL V/V
- 34 COMP CW RETURN MAIN ISOL V/V
- 35 BALANCE MAIN ISOL V/V
- 36 CW BALANCE MAIN SECTION ISOL V/V
- 37 SERVICE WATER TO ABP SEALING SYSTEM ISOL V/V (NOT IN USE)
- 38 CW TO LH AND RH ID FAN BEARING LUB OIL COOLERS ISOL V/V



FOR CONTINUATION SEE DRAWING 0.36/13938

THIS DRAWING SUPERSEDES DRG. NUMBER 32.36/13414

REV	STATUS	NAME	SIGNED	DATE
10	AS BUILT			
9	AS BUILT			
8	AS BUILT			
7	AS BUILT			
6	AS BUILT			
5	AS BUILT			
4	AS BUILT			
3	AS BUILT			
2	AS BUILT			
1	AS BUILT			

REV	DATE	DESCRIPTION	BY	CHKD	APP	SCALE
00	10/01/03	DR No EC1082 v1/v1 & filter added	J.S.F.			
01	10/01/03	DR No EC1085 no change, drawing now equivalent to 'as delivered'	J.S.F.			
02	10/01/03	DR No EC 0075 v1/v1 & equipment added	J.S.F.			
03	10/01/03	DR No EC 0076 v1/v1 & CRONES ADD	J.S.F.			
04	10/01/03	DR No EC 0410 v1/v1 REV & BELTED	J.S.F.			
05	10/01/03	DR No EC 0401 MILL FEEDS SHOWN	J.S.F.			
06	10/01/03	DR No EC 0272 v1/v1 REV & BELTED	J.S.F.			
07	10/01/03	DR No EC1017 v1 REVISED	J.S.F.			
08	10/01/03	DR No EC 0078 v1 REV TO REDLINE	J.S.F.			
09	10/01/03	KKS CORRECTED	J.S.F.			
10	10/01/03	FIRST ISSUE	J.S.F.			

CAMDEN POWER STATION
C.W. PLANT
SERVICE WATER WEST SYSTEM
P & I DIAGRAM