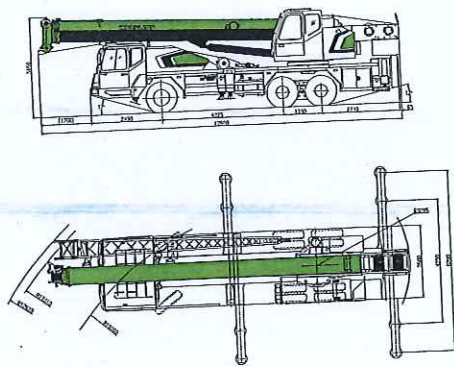
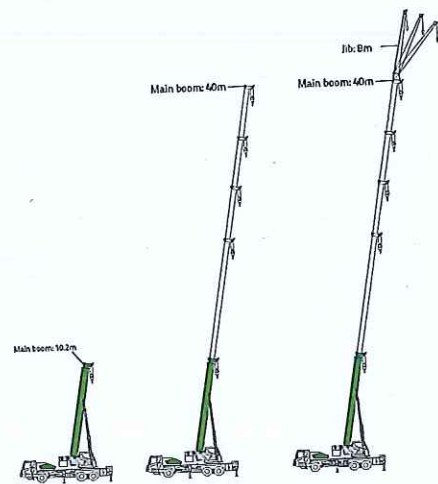




CRANE DIMENSIONS



BOOM / JIBS COMBINATION



CRANE AND COMPONENT WEIGHTS

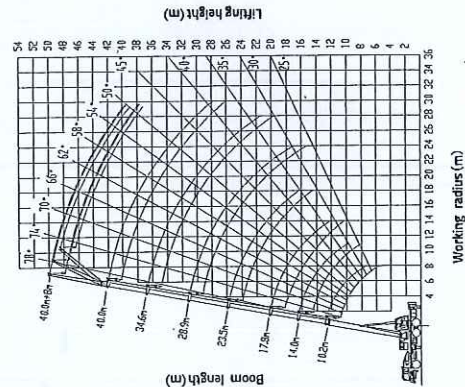
Axle	1	2	3	Total weight
T	6.5	12.05	12.05	29.6

Hook Detailed Description	Weight (kg)	Remark
Hook Load T	256	standard
3	80	standard

Working Speed	85	42	90/11
---------------	----	----	-------

Drive	Operation Speed	Rope diameter/length	Max. single line pull
	135m/min	Ø 14mm/170m	3000kg
	135m/min	Ø 14mm/105m	3000kg
	0-2.77/min		
	25 / 425		
	825 / 805		

LIFTING HEIGHT CURVE



LIFTING CAPACITY TABLES

Working radius (m)	Main boom (m)					
	16.2m	15.5m	14.8m	14.1m	13.4m	12.7m
3.6	20000	23500	19000			
3.6	20000	21500	19000			
3.6	20000	20000	19000			
4.0	21000	19500	19000			
4.5	19000	17500	17500	15000		
5.0	17500	16500	16000	14000		
5.5	16000	15000	14500	13000		
6.0	14500	14000	13500	12000		
6.5	13000	12500	12000	10500		
7.0	11500	11000	10500	9000		
7.5	10000	9500	9000	7500		
8.0	8500	8000	7500	6000		
9.0	7000	6500	6000	4500		
10.0	5500	5000	4500	3000		
11.0	4000	3500	3000	1500		
12.0	2500	2000	1500	500		
13.0	1000	500	500			
14.0	500	500	500			
15.0	500	500	500			
16.0	500	500	500			
17.0	500	500	500			
18.0	500	500	500			
20.0	500	500	500			
22.0	500	500	500			
24.0	500	500	500			
26.0	500	500	500			
28.0	500	500	500			
30.0	500	500	500			
32.0	500	500	500			
34.0	500	500	500			
36.0	500	500	500			
Revolving	10	0	0	0	0	0
Hook	10	8	6	4	3	3

Working radius (m)	Main boom (m)					
	12.0m	11.3m	10.6m	9.9m	9.2m	8.5m
3.6	18000	21500	17000			
3.6	18000	19500	17000			
3.6	18000	18000	17000			
4.0	19000	17500	17000			
4.5	17000	15500	15000	12500		
5.0	15500	14500	14000	11500		
5.5	14000	13000	12500	10000		
6.0	12500	12000	11500	8500		
6.5	11000	10500	10000	7000		
7.0	9500	9000	8500	5500		
7.5	8000	7500	7000	4000		
8.0	6500	6000	5500	2500		
9.0	5000	4500	4000	1000		
10.0	3500	3000	2500	500		
11.0	2000	1500	1000	500		
12.0	1000	500	500			
13.0	500	500	500			
14.0	500	500	500			
15.0	500	500	500			
16.0	500	500	500			
17.0	500	500	500			
18.0	500	500	500			
20.0	500	500	500			
22.0	500	500	500			
24.0	500	500	500			
26.0	500	500	500			
28.0	500	500	500			
30.0	500	500	500			
32.0	500	500	500			
34.0	500	500	500			
36.0	500	500	500			
Revolving	10	0	0	0	0	0
Hook	10	8	6	4	3	3

Working radius (m)	Main boom (m)					
	12.0m	11.3m	10.6m	9.9m	9.2m	8.5m
3.6	18000	21500	17000			
3.6	18000	19500	17000			
3.6	18000	18000	17000			
4.0	19000	17500	17000			
4.5	17000	15500	15000	12500		
5.0	15500	14500	14000	11500		
5.5	14000	13000	12500	10000		
6.0	12500	12000	11500	8500		
6.5	11000	10500	10000	7000		
7.0	9500	9000	8500	5500		
7.5	8000	7500	7000	4000		
8.0	6500	6000	5500	2500		
9.0	5000	4500	4000	1000		
10.0	3500	3000	2500	500		
11.0	2000	1500	1000	500		
12.0	1000	500	500			
13.0	500	500	500			
14.0	500	500	500			
15.0	500	500	500			
16.0	500	500	500			
17.0	500	500	500			
18.0	500	500	500			
20.0	500	500	500			
22.0	500	500	500			
24.0	500	500	500			
26.0	500	500	500			
28.0	500	500	500			
30.0	500	500	500			
32.0	500	500	500			
34.0	500	500	500			
36.0	500	500	500			
Revolving	10	0	0	0	0	0
Hook	10	8	6	4	3	3

LIFTING CAPACITY TABLES

Unit: kg

Working radius (m)	Main beam height (m)					
	10.2m	12.6m	15.0m	17.4m	19.8m	22.2m
3.0	25000	16500	14500	14500	14500	14500
3.5	23000	15500	14500	14500	14500	14500
4.0	21000	14500	14500	14500	14500	14500
4.5	19000	13500	14500	14500	14500	14500
5.0	17400	12500	14500	14500	14500	14500
5.5	16000	11500	13500	13500	13500	13500
6.0	14500	10500	12500	12500	12500	12500
6.5	13000	9500	11500	11500	11500	11500
7.0	11500	8500	10500	10500	10500	10500
7.5	10000	7500	9500	9500	9500	9500
8.0	8500	6500	8500	8500	8500	8500
9.0	7000	5500	7500	7500	7500	7500
10.0	5500	4500	6500	6500	6500	6500
11.0	4000	3500	5500	5500	5500	5500
12.0	2500	2500	4500	4500	4500	4500
13.0	1000	1500	3500	3500	3500	3500
14.0	500	1000	2500	2500	2500	2500
15.0	200	500	1500	1500	1500	1500
16.0	100	200	1000	1000	1000	1000
18.0	50	100	500	500	500	500
20.0	20	50	200	200	200	200
24.0	10	20	100	100	100	100
28.0	5	10	50	50	50	50
32.0	2	5	20	20	20	20
36.0	1	2	10	10	10	10
40.0	0	1	5	5	5	5
44.0	0	0	2	2	2	2
48.0	0	0	1	1	1	1
52.0	0	0	0	0	0	0
56.0	0	0	0	0	0	0
60.0	0	0	0	0	0	0
64.0	0	0	0	0	0	0
68.0	0	0	0	0	0	0
72.0	0	0	0	0	0	0
76.0	0	0	0	0	0	0
80.0	0	0	0	0	0	0
84.0	0	0	0	0	0	0
88.0	0	0	0	0	0	0
92.0	0	0	0	0	0	0
96.0	0	0	0	0	0	0
100.0	0	0	0	0	0	0
104.0	0	0	0	0	0	0
108.0	0	0	0	0	0	0
112.0	0	0	0	0	0	0
116.0	0	0	0	0	0	0
120.0	0	0	0	0	0	0
124.0	0	0	0	0	0	0
128.0	0	0	0	0	0	0
132.0	0	0	0	0	0	0
136.0	0	0	0	0	0	0
140.0	0	0	0	0	0	0
144.0	0	0	0	0	0	0
148.0	0	0	0	0	0	0
152.0	0	0	0	0	0	0
156.0	0	0	0	0	0	0
160.0	0	0	0	0	0	0
164.0	0	0	0	0	0	0
168.0	0	0	0	0	0	0
172.0	0	0	0	0	0	0
176.0	0	0	0	0	0	0
180.0	0	0	0	0	0	0
184.0	0	0	0	0	0	0
188.0	0	0	0	0	0	0
192.0	0	0	0	0	0	0
196.0	0	0	0	0	0	0
200.0	0	0	0	0	0	0
204.0	0	0	0	0	0	0
208.0	0	0	0	0	0	0
212.0	0	0	0	0	0	0
216.0	0	0	0	0	0	0
220.0	0	0	0	0	0	0
224.0	0	0	0	0	0	0
228.0	0	0	0	0	0	0
232.0	0	0	0	0	0	0
236.0	0	0	0	0	0	0
240.0	0	0	0	0	0	0
244.0	0	0	0	0	0	0
248.0	0	0	0	0	0	0
252.0	0	0	0	0	0	0
256.0	0	0	0	0	0	0
260.0	0	0	0	0	0	0
264.0	0	0	0	0	0	0
268.0	0	0	0	0	0	0
272.0	0	0	0	0	0	0
276.0	0	0	0	0	0	0
280.0	0	0	0	0	0	0
284.0	0	0	0	0	0	0
288.0	0	0	0	0	0	0
292.0	0	0	0	0	0	0
296.0	0	0	0	0	0	0
300.0	0	0	0	0	0	0
304.0	0	0	0	0	0	0
308.0	0	0	0	0	0	0
312.0	0	0	0	0	0	0
316.0	0	0	0	0	0	0
320.0	0	0	0	0	0	0
324.0	0	0	0	0	0	0
328.0	0	0	0	0	0	0
332.0	0	0	0	0	0	0
336.0	0	0	0	0	0	0
340.0	0	0	0	0	0	0
344.0	0	0	0	0	0	0
348.0	0	0	0	0	0	0
352.0	0	0	0	0	0	0
356.0	0	0	0	0	0	0
360.0	0	0	0	0	0	0
364.0	0	0	0	0	0	0
368.0	0	0	0	0	0	0
372.0	0	0	0	0	0	0
376.0	0	0	0	0	0	0
380.0	0	0	0	0	0	0
384.0	0	0	0	0	0	0
388.0	0	0	0	0	0	0
392.0	0	0	0	0	0	0
396.0	0	0	0	0	0	0
400.0	0	0	0	0	0	0
404.0	0	0	0	0	0	0
408.0	0	0	0	0	0	0
412.0	0	0	0	0	0	0
416.0	0	0	0	0	0	0
420.0	0	0	0	0	0	0
424.0	0	0	0	0	0	0
428.0	0	0	0	0	0	0
432.0	0	0	0	0	0	0
436.0	0	0	0	0	0	0
440.0	0	0	0	0	0	0
444.0	0	0	0	0	0	0
448.0	0	0	0	0	0	0
452.0	0	0	0	0	0	0
456.0	0	0	0	0	0	0
460.0	0	0	0	0	0	0
464.0	0	0	0	0	0	0
468.0	0	0	0	0	0	0
472.0	0	0	0	0	0	0
476.0	0	0	0	0	0	0
480.0	0	0	0	0	0	0
484.0	0	0	0	0	0	0
488.0	0	0	0	0	0	0
492.0	0	0	0	0	0	0
496.0	0	0	0	0	0	0
500.0	0	0	0	0	0	0

Unit: kg

Main beam height (m)	Main beam height (m)		
	15.0m	17.4m	19.8m
80	3000	2500	2000
78	2800	2300	1800
76	2600	2100	1600
74	2400	1900	1400
72	2200	1700	1200
70	2000	1500	1000
68	1800	1300	800
66	1600	1100	600
64	1400	900	400
62	1200	700	200
60	1000	500	100
58	800	300	50
56	600	150	20
54	400	50	10
52	200	10	5
50	100	5	2
48	50	2	1
46	20	1	0
44	10	0	0
42	5	0	0
40	2	0	0
38	1	0	0
36	0	0	0
34	0	0	0
32	0	0	0
30	0	0	0
28	0	0	0
26	0	0	0
24	0	0	0
22	0	0	0
20	0	0	0
18	0	0	0
16	0	0	0
14	0	0	0
12	0	0	0
10	0	0	0
8	0	0	0
6	0	0	0
4	0	0	0
2	0	0	0
Hook	0	0	0

TECHNICAL SPECIFICATIONS

Crane Superstructure

Main beam: 5 section L-shaped main beam on telescopic mast and boom, main beam length 13.2m-42.0m.

JB: One section JB length 10.2m, 15.0m, 19.8m.

Steering gear: Hydraulic fluid displacement motor, planetary reducer and steering bearing. Free swing, low chock.

Holding gear: Dual motor with variable displacement pump motor and planetary reducer. Win rope attachments.

Hydraulic system: Advanced hydraulic proportional control system with mechanical zero control. Quad pump system offers 40% for all the movements. Hydraulic tank 500 liters.

Electrical system: CC 24V, superstructure and chassis electrical system offers a comfortable and safe operation.

Operator's cab: New cab with spacious space and non-slipable floor. Operates comfortably and safely.

Safety device: LMS safety device, self-protecting system.

Counterweight: 5T counterweight.

Crane Carrier

Chassis frame: Made by 200x100x10mm high-tensile steel plate.

Outrigger: 4 high-pressure outriggers with self-aligning function, 20° swing.

Engine: WEDCAR W17.54000 diesel engine, 17500 rpm, 16000W, fuel tank 520 liters.

Transmission: M77 mechanical gear box with 8 forward gears and 7 reverse gears.

Axles: Front steering axle, rear tandem axle suspension.

Suspension: Front axle and rear axle suspension and rear axle roller suspension with shock absorber.

Steering: Front axle steering with power steering assistance system.

Brake: Single brake, parking brake and emergency brake and auxiliary brake.

Tires: Total 10 tires with one spare tire. Tire size: 13R22.5 / 11.5R20.

Driver's cab: Modern and luxury driver's cab with non-slipable floor offers a comfortable operating experience. AC and heater.

MAIN TECHNICAL PARAMETERS

Item	Value	Remarks
Max. rated lifting capacity	1g	25000
Max. load moment of basic boom	181m	560
Max. load moment of Max. length main boom	181m	598
Max. lifting height of basic boom	m	16.9
Max. lifting height of JB	m	46.2
Max. hoist rope speed (Main winch)	m/min	47.8
Max. hoist rope speed (Auxiliary winch)	m/min	135
Boom descending up time	s	25
Boom telescoping out time	s	82
Sawing speed	m/min	0-2.7
Max. working altitude	m	2000
Max. driving speed	km/h	85
Max. gradeability	%	42
Min. turning diameter	m	52.0
Min. ground clearance	mm	250
Oil consumption per hundred litermeter	L	28
Deadweight in driving condition	kg	30600
Complete vehicle basic mass	kg	30670
Front axle load	kg	6500
Rear axle load	kg	24100
Overall dimensions (LxWxH)	mm	12500x2500x3400
Outrigger spread (W)	m	5.40
Outrigger spread (L)	m	10.2m-19.8m-29.4m-39.0m
Tail driving radius	mm	3235
Main boom length	m	10.2-42.0
Main boom angle	°	-1-80
JB length	m	8
Offset	m	0, 15, 30