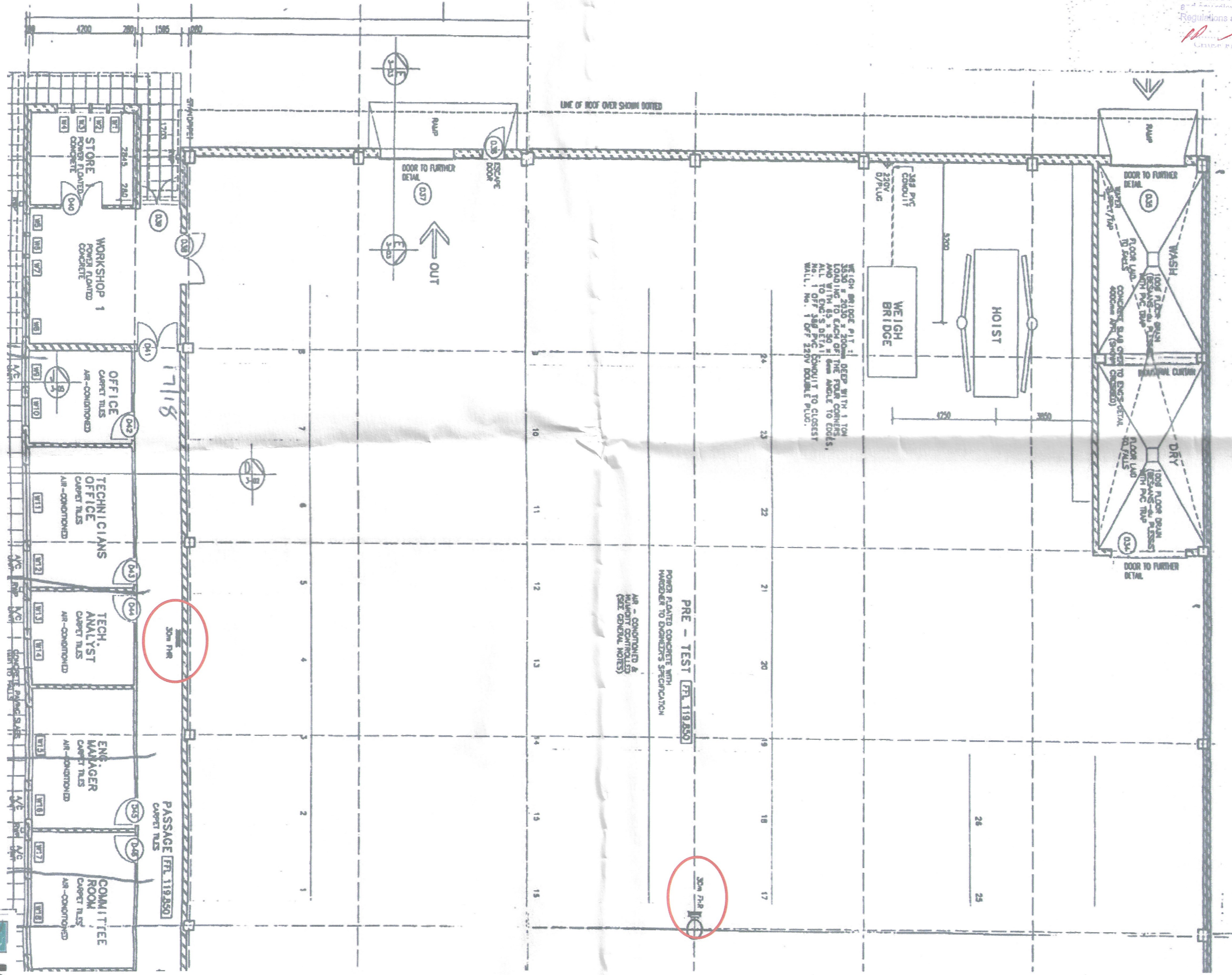


DURHAM CITY FIRE & RESCUE SERVICES
 FIRE SAFETY DIVISION
 FIRE PROTECTION PLAN No: **FS/01/22/11/23**
 is approved by the department subject
 to complying with the requirements
 as detailed by the architect on this plan
 and in accordance with the SANS 10400 Building
 Regulations and any relevant Municipal By-Law
M. [Signature] 22/11/23
 CHIEF FIRE OFFICER DATE



WEIGH BRIDGE 91T -
 1500 x 3000 x 300mm DEEP WITH 1 TON
 LOAD LINE TO EACH OF THE FOUR CORNERS,
 AND WITH 85 x 50 x 50mm ANGLE TO CORNERS,
 ALL 1 OFF 180 PVC CONDUIT TO CLOSEST
 WALL. No. 1 OFF 220V DOUBLE PLUG.

PRE - TEST (FRL 119.850)
 POWER PLANTED CONCRETE WITH
 WOODEN TO EXPLORE'S SPECIFICATION
 AIR - CONDITIONED &
 AIR-CONTROLLED
 (SEE GENERAL NOTES)

30m FIRE

30m FIRE

JCK FIRE
 ENGINEERS & CONSULTANTS
 SABS - EAST LONDON
 1A Teichman Place, Sunny Ridge
 East London

UPGRADE FLAMMABLE LIQUID STORE

SITE PLAN - INDICATION

SCALE: C DU TOIT

JCK FIRE PLAN: F19276

SCALE: N.T.S.