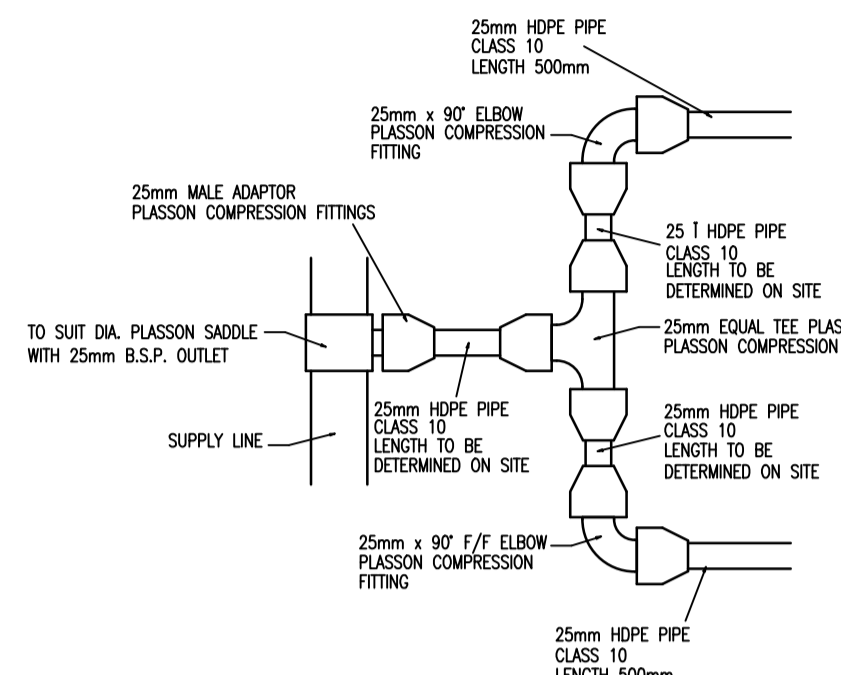
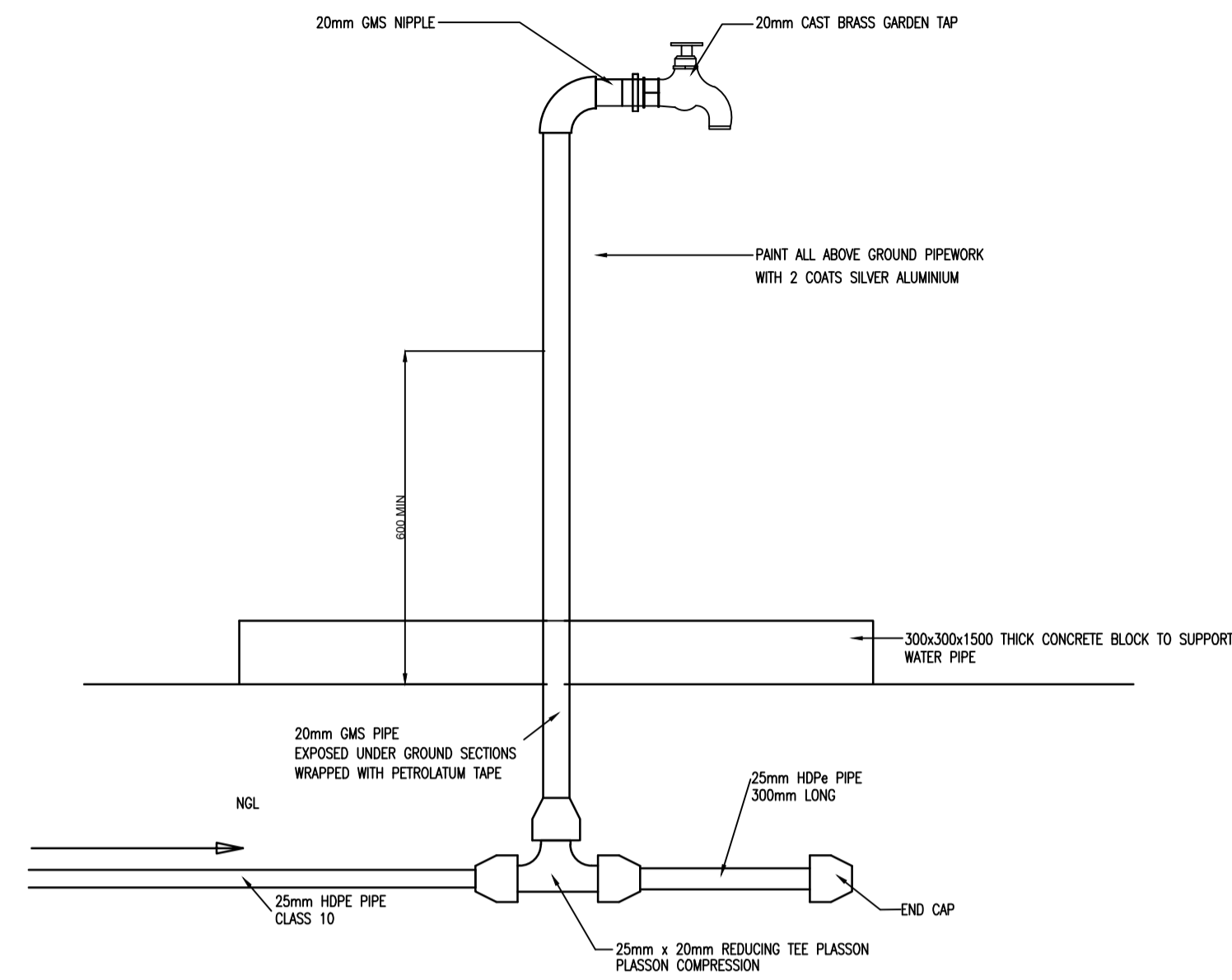


PIPEWORK FOR SINGLE CONNECTION
SCALE 1:10

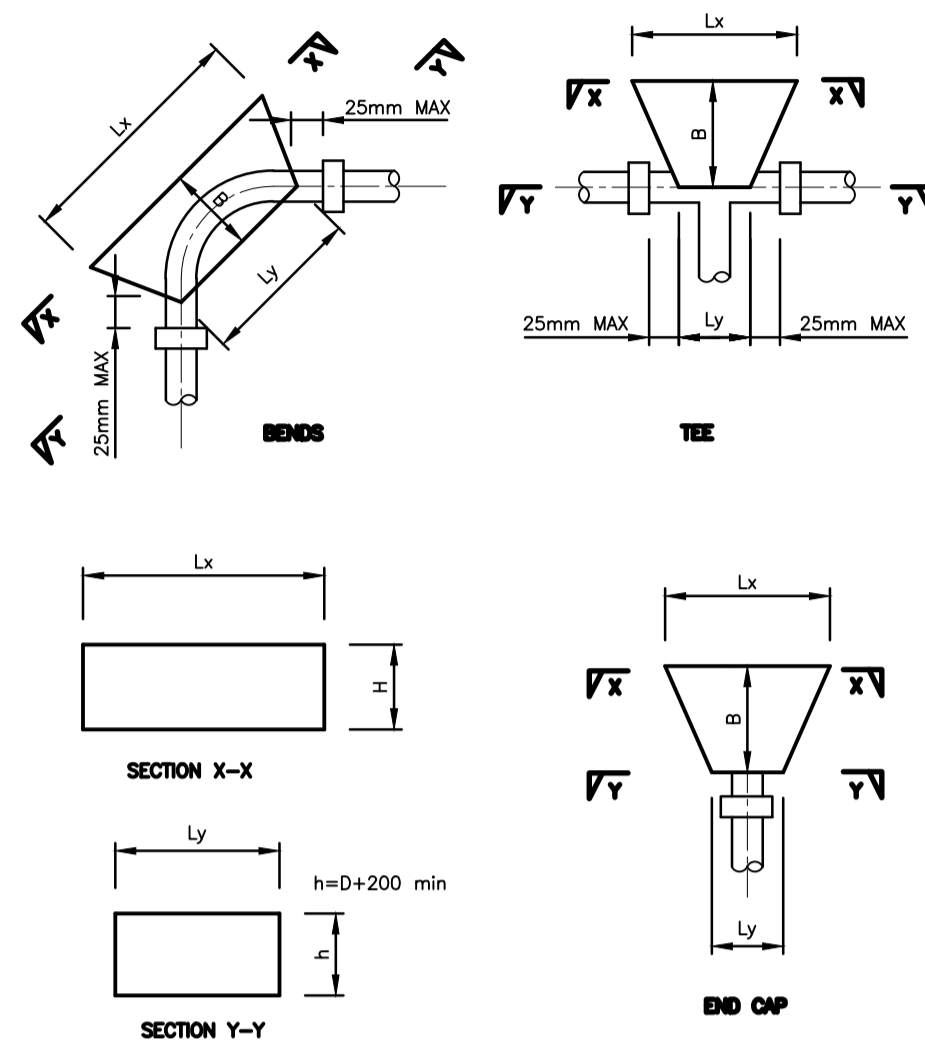


PIPEWORK FOR DOUBLE CONNECTION
SCALE 1:10



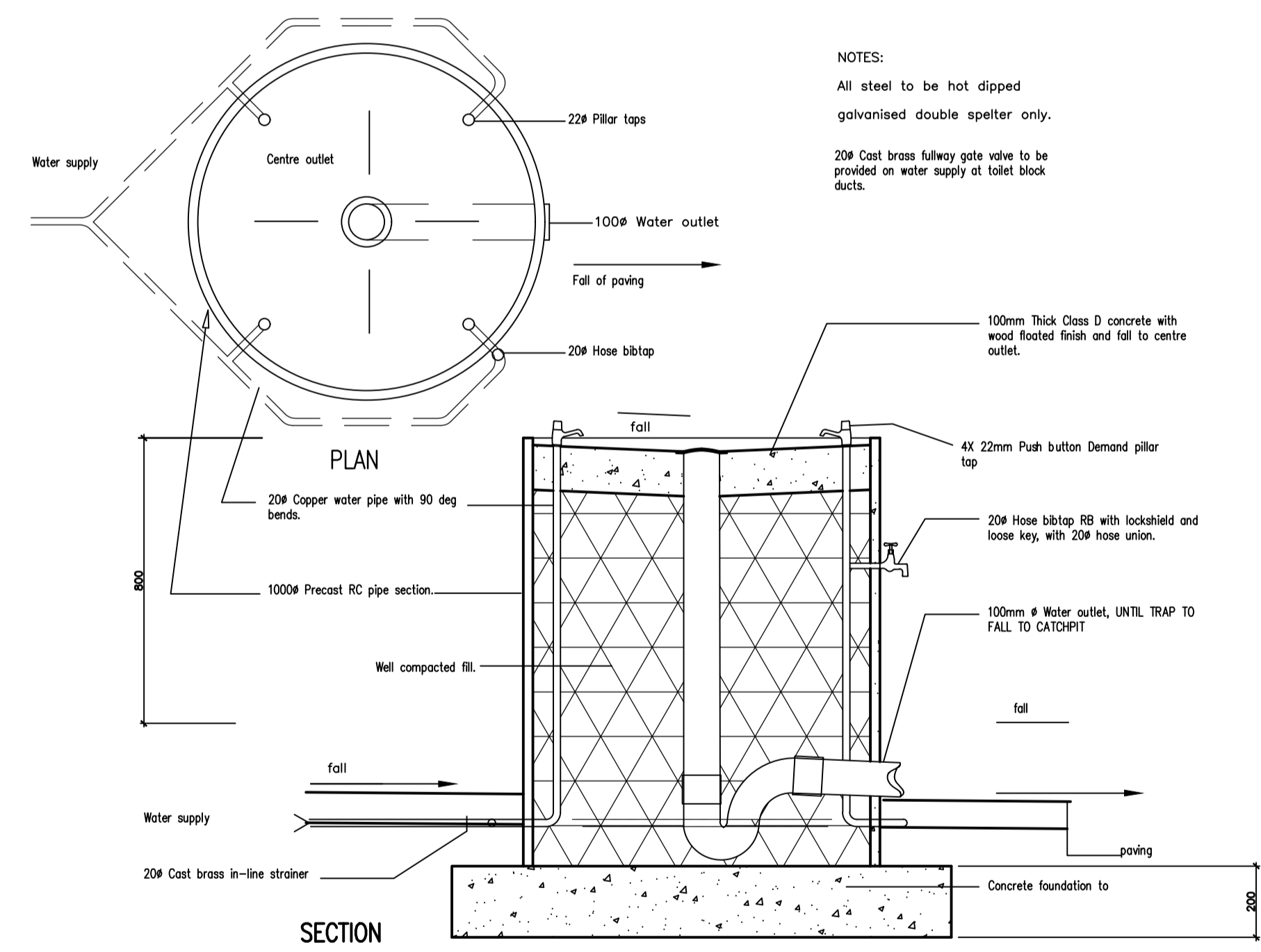
SECTION OF STANDPIPE
SCALE 1:10

BEND	SIZE	FIRM SOIL & GRAVEL			DRY CLAY			PAYMENT QUANTITY		
		B	h	Lx	H	Lx	Ly	FIRM SOIL & GRAVEL	CLAY	
		m³			m³			m³		
11.25°	75	400	300	300	300	80	300	300	0.022	0.022
	100	400	325	325	325	80	325	325	0.026	0.026
	150	500	380	380	380	140	380	490	0.049	0.049
	200	550	440	440	440	160	440	755	0.073	0.111
	400	730	606	606	705	450	1000	1250	0.255	0.550
450	783	678	678	841	500	1100	1500	0.358	0.777	
22.50°	75	400	300	300	300	80	300	300	0.022	0.022
	100	400	325	325	325	80	325	330	0.026	0.026
	150	500	380	380	380	140	380	490	0.053	0.110
	200	550	440	440	440	160	440	700	0.086	0.208
	400	730	606	606	720	450	1000	1345	0.186	0.468
450	783	678	678	820	500	1100	1500	0.228	0.513	
45°	75	400	300	300	300	160	300	770	0.028	0.058
	100	400	325	325	325	170	325	830	0.032	0.067
	150	500	380	380	380	180	380	1240	0.064	0.134
	200	550	440	440	430	200	440	1700	0.087	0.187
	400	730	606	606	720	450	1000	1345	0.186	0.468
450	783	678	678	820	500	1100	1500	0.228	0.513	
90°	75	400	300	300	300	240	300	810	0.039	0.083
	100	400	325	325	325	240	325	870	0.043	0.096
	150	500	380	380	380	310	380	1000	0.076	0.156
	200	550	440	440	430	350	440	1200	0.103	0.219
	400	730	606	606	720	450	1000	1345	0.186	0.468
450	783	678	678	820	500	1100	1500	0.228	0.513	
TEE	75	400	300	320	150	400	720	150	0.028	0.067
	100	400	325	380	160	400	715	160	0.039	0.096
	150	500	380	560	260	600	1040	260	0.103	0.259
	200	550	440	720	330	800	1690	330	0.192	0.468
	400	730	606	960	490	1000	1750	490	0.319	0.839
450	783	678	1120	520	1100	2050	470	0.430	1.098	
PUDDLE PIPE	75	500	300	320	1070	300	969	1710	0.161	0.257
	100	500	320	380	1160	300	969	1860	0.172	0.270
	150	500	380	580	1380	300	1200	2000	0.373	0.780
	200	500	440	770	1510	300	1300	2140	0.451	0.944
	400	700	606	1050	1860	300	1810	2410	0.729	1.526
450	750	678	1100	2000	300	1950	2560	0.797	1.677	
END CAP	75	500	300	380	100	500	540	100	0.027	0.075
	100	500	320	380	100	500	540	100	0.030	0.080
	150	500	380	540	100	500	540	100	0.036	0.096
	200	500	440	745	100	500	540	100	0.043	0.112
	400	700	606	1085	100	500	540	100	0.052	0.136
450	750	678	1085	100	500	540	100	0.056	0.146	

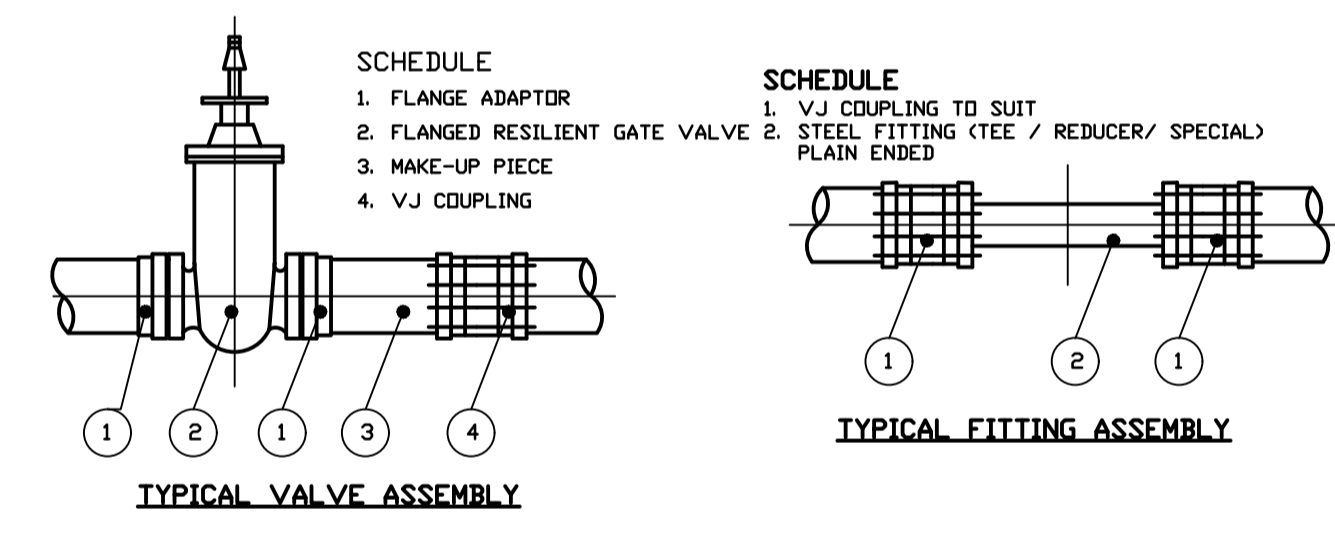
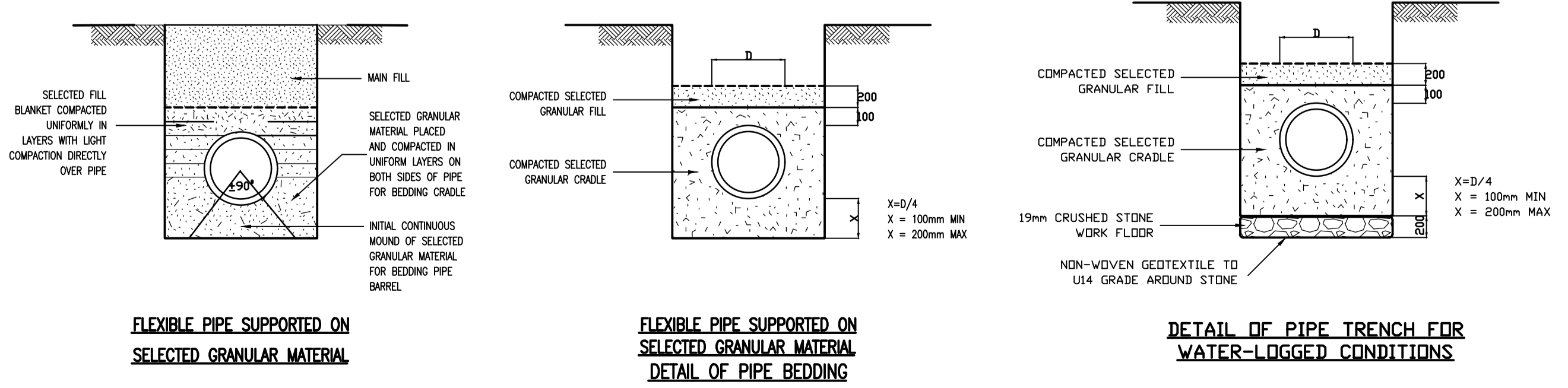


DETAILS OF THRUST BLOCKS
N.T.S

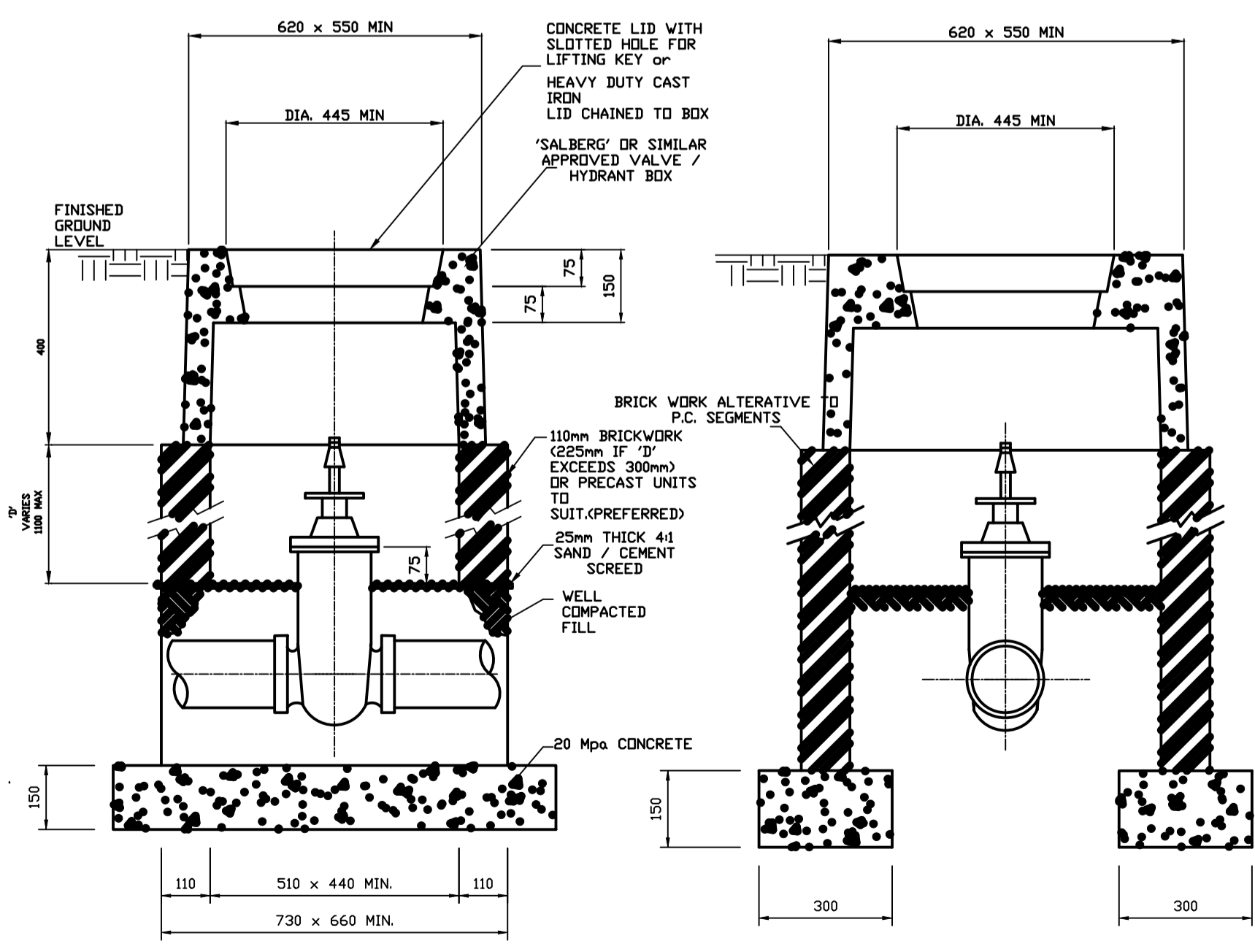
NOTES:
All steel to be hot dipped galvanised double spelter only.
20# Cast brass fullway gate valve to be provided on water supply of toilet block ducts.



DRINKING FOUNTAIN
SCALE 1:10



TYPICAL VALVE ASSEMBLY



VALVE CHAMBER FOR VALVES NOT EXCEEDING 300mm N.B.
N.T.S

NOTES:
1. VICTAULIC VALVES AND FITTINGS MAY BE USED AS AN ALTERNATIVE TO THE PROPOSED ASSEMBLY.
2. WRITTEN PERMISSION FROM THE ENGINEER MUST BE OBTAINED FOR THE INSTALLATION OF ALTERNATIVES.
3. THE INSTALLATION MUST BE OF SUCH A NATURE THAT THE REMOVAL OF VALVES AND FITTINGS, FOR MAINTENANCE PURPOSES, CAN EASILY BE EXECUTED.

NOTES:
a) VALVES UP TO 300mm
1) RESILIENT SEAL GATE VALVE
2) NON RISING SPINDLE
3) ANTI CLOCKWISE CLOSING
4) A REMOVABLE COUPLING MUST BE PROVIDED AT ONE SIDE OF THE VALVE AT LEAST 500 mm FROM THE SHAFT. SPECIFICATIONS TO SABS 664

b) VALVES OVER 300mm
1) WEDGE GATE VALVE
2) A REMOVABLE COUPLING MUST BE PROVIDED AT ONE SIDE OF THE VALVE AT LEAST 500 mm FROM THE SHAFT. SPECIFICATIONS TO SABS 664

c) PRECAST SEGMENT SPECIFICATIONS
1) ALL MANHOLE SEGMENTS ACCORDING TO SABS 1824-1981
2) TOP SURFACE OF MANHOLE COVER TO BE 50 mm ABOVE THE FINISHED GROUND LEVEL EXCEPT IN PAVED AREAS
3) SEGMENTS TO BE BONDED WITH 1:3 CEMENT MORTAR TO PROVIDE A WATERTIGHT JOINT
4) DIMENSIONS OF SEGMENTS FOR VALVES BIGGER THAN 300 DIA. MUST BE ADAPTED TO FIT VALVE SIZE.

d) ISOLATION VALVE
1) VALVES UP TO 200mm DIAMETER MAY BE PLAIN ENDED.
2) VALVES OVER 200mm DIAMETER SHALL BE FLANGED.

NOTES:
COPYRIGHT NOTICE

REV	DATE	DESIGN	DRAWN	DESCRIPTION
A	18/10/2023	LIMPOPO	CAMBER	ISSUED FOR TENDER PURPOSES

SCALE AS SHOWN
PROJECT RPS
DRAWING NUMBER DWG-ST-102
REVISION A
DATE 16/10/2023
DRAWN BY VM