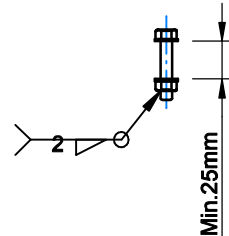
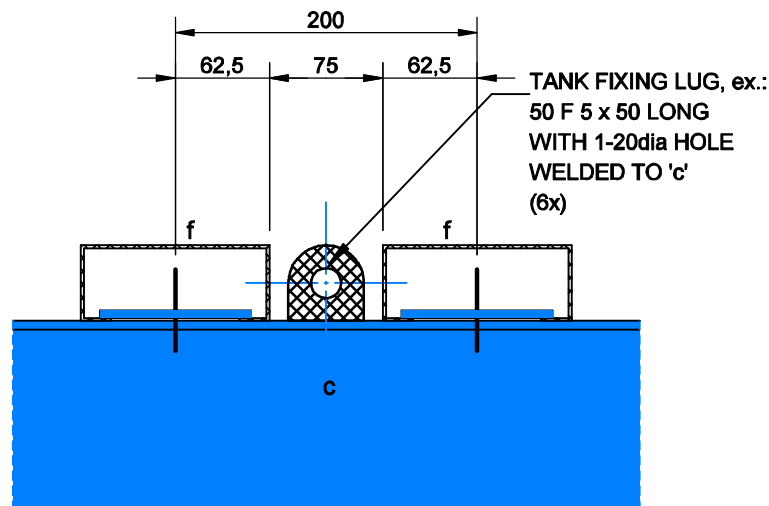


AFTER ASSEMBLY OF FRAMEWORK  
NUTS AND BOLTS TO BE WELDED  
TOGETHER WITH 2mm FILLET WELD



### BOLT DETAIL

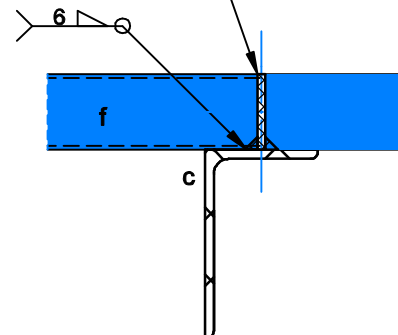
1:5



### ELEVATION

1:5

TANK FIXING LUG, ex.:  
50 F 5 x 50 LONG  
WITH 1-20dia HOLE  
WELDED TO 'c'  
(6x)



### SECTION H-H

1:5

### TYPICAL LUG DETAIL (6x)

1:5

QUANTITIES FOR SINGLE TANK STAND				
ITEM	DESCRIPTION	LENGTH	No.	OFF
BASE PLATE	80 x 80 x 6 HRA	300mm	4	
COLUMN	80 x 80 x 6 HRA	4000mm	4	
STRUT	40 x 40 x 6 HRA	1580mm	10	
FLOOR BEAM	125 x 75 x 10 HRA	2250mm	2	
FLOOR MEMBER	125 x 50 x 2 CRLC	2700mm	11	
VERT.BRACING	30 x 6 F	2180mm	12	
VERT.BRACING	30 x 6 F	2150mm	4	
HORI.BRACING	40 x 40 x 3 HRA	2200mm	4	
PIPE CLAMP	80 x 80 x 6 HRA	100mm	6	
	M10 U-SHAPED BOLT	125mm	6	
	WOOD BLOCK	140mm	6	
FIXING PLATE	75 PL 6 75 LONG	75mm	3	
BOLTS	M10 ST/STL	55mm	64	

#### NOTE:

- 1 FOUNDATIONS:
  - 1.1 DEPTHS OF ALL BASES SHALL BE DETERMINED AND APPROVED ON SITE BY THE ENGINEER PRIOR TO CONCRETING.
  - 1.2 SAFE BEARING CAPACITY OF GROUND 200 kPa.
- 2 CONCRETE:
  - 2.1 PRESCRIBED MIX 10/19 IN BLINDING LAYERS.
  - 2.2 PRESCRIBED MIX 20/19 IN COLUMN BASES.
- 3 STRUCTURAL STEELWORK
  - 3.1 ALL STRUCTURAL STEELWORK GRADE 300W ACCORDING TO SABS 1431.
  - 3.2 STEELWORK GENERALLY OF WELDED CONSTRUCTION WITH SITE CONNECTIONS BOLTED. UNLESS OTHERWISE SHOWN ARE :
    - ALL HOLES 12 DIA. FOR M10 BOLTS
    - ALL BOLTS GRADE 4.8
    - ALL GUSSETS 6mm PLATES
    - ALL WELDS 6mm FILLET
  - 3.3 ALL STEELWORK SHALL BE SUPPLIED, FABRICATED DELIVERED AND ERECTED IN ACCORDANCE WITH SABS-1200H AND SABS-0164 1984.
  - 3.4 SITE WELDING OF STEELWORK SHALL NOT BE PERMITTED WITHOUT THE ENGINEERS APPROVAL.
  - 3.5 CORROSION PROTECTION:
    - 3.5.1 PAINTWORK IN WORKSHOP:
      - EPOXY COATING SHALL BE AN APPROVED TWO COMPONENT, POLYAMIDE CURED PIPE COATING. IT SHALL BE APPLIED IN THE WORKSHOP BY SPRAYING TO A FINAL THICKNESS OF NOT LESS THAN 300 MICRON.
    - 3.5.2 PAINTWORK AFTER ERECTION:
      - a) AFTER INSTALLATION ANY CHIPS OR SCRATCH MARKS SHALL BE MADE GOOD ON SITE WITH BRUSH APPLIED EPOXY PAINT.
      - b) AN INTERIM LAYER ACCORDING TO SABS 681 TYPE I SHALL BE APPLIED TO A FINAL THICKNESS OF 25 MICRON.
    - 3.5.3 FINAL FINISHING LAYER:
      - A FINAL ENAMEL LAYER ACCORDING TO SABS 630 GRADE 1 SHALL BE APPLIED WITHIN 24 HOURS AFTER THE INTERIM LAYER HAS BEEN APPLIED, TO A FINAL THICKNESS OF 25 MICRON (DARK ADMIRALTY GREY).

#### LEGEND:

- a : 80 x 80 x 6 HRA (45B/M \$)
- b : 40 x 40 x 6 HRA (23B/M \$)
- c : 125 x 75 x 10 HRA (45B/M \$)
- d : 30 x 6 F (25B/M \$)
- e : 40 x 40 x 3 HRA (23B/M \$)
- f : 125 x 50 x 20 x 2,5 CRLC

#### NOTE:

- HRA = HOT ROLLED ANGLE
- F = FLAT BAR
- CRLC = COLD ROLLED LIPPED CHANNEL
- B/B = BACK TO BACK ( 100-500 )
- B/M = BACKMARK
- \$ = UNLESS OTHERWISE SHOWN

MOD NO.	REVISION	SIGNATURE & DATE
SCHOOL SANITATION PROGRAM LIMPOPO PROVINCE		
LIMPOPO PROVINCIAL DEPARTMENT OF EDUCATION		
		MVULA TRUST 9A LANDROS MARE STR POLOKWANE 0699
		LIMPOPO PROVINCIAL DEPARTMENT OF EDUCATION
<b>3m HIGH ELEVATED TANK STAND: GENERALDETAILS</b>		
DRAWN	DRAWING NO.	
CHECKED	MVULA-010-12	
SCALE	SCALE	