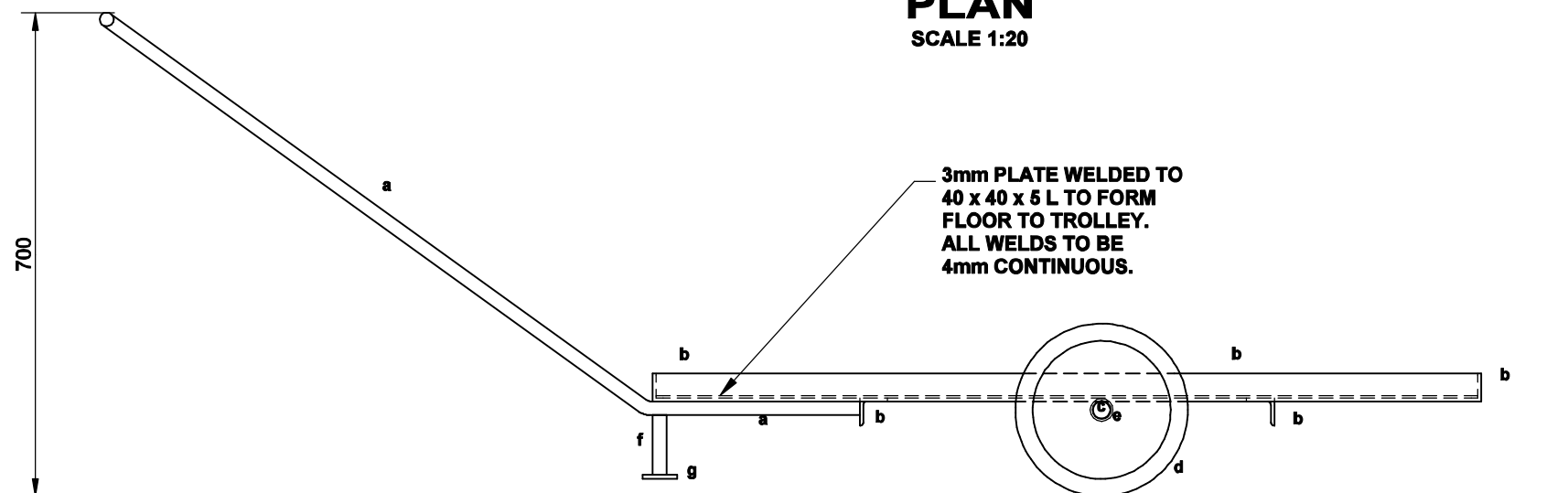


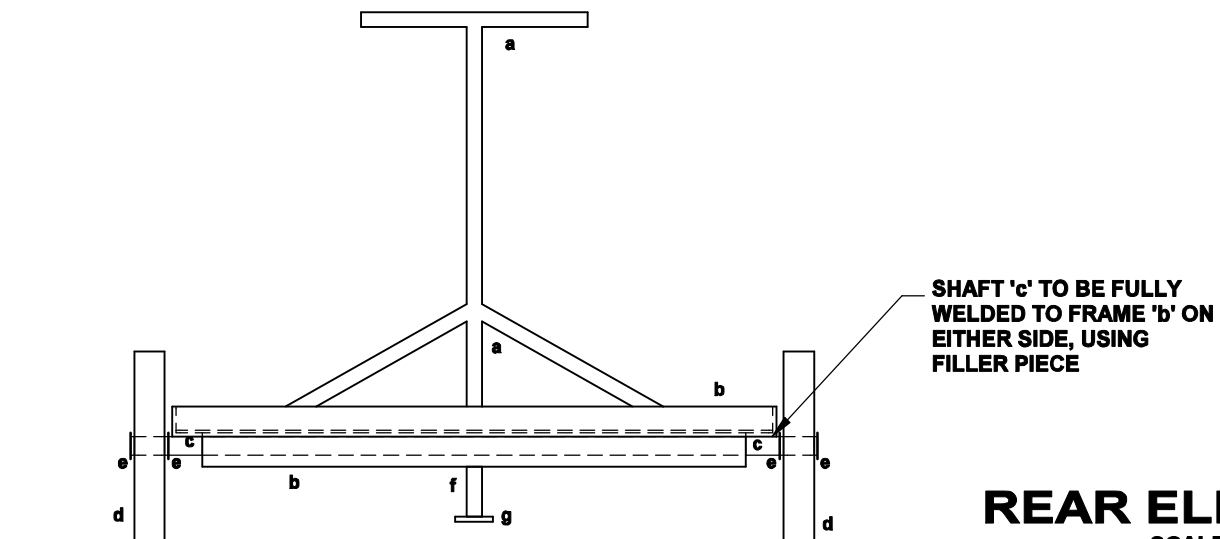
**PLAN**  
SCALE 1:20



**SIDE ELEVATION**  
SCALE 1:10

**LEGEND:**

- a - Ø20mm Round Bar
- b - 40 x 40 x 5 L
- c - Ø25mm Round Bar Shaft
- d - Ø250mm Wheel Barrow Wheel with Teflon Bush
- e - Ø 26 x 3mm Washer Welded to Shaft
- f - Ø20mm Round Bar 80mm Long
- g - 50 x 50 x 6mm Plate



**REAR ELEVATION**  
SCALE 1:10

**CORROSION PROTECTION:**

**.1 PAINTWORK IN WORKSHOP:**

EPOXY COATING SHALL BE AN APPROVED TWO COMPONENT, POLYAMIDE CURED PIPE COATING. IT SHALL BE APPLIED IN THE WORKSHOP BY SPRAYING TO A FINAL THICKNESS OF NOT LESS THAN 300 MICRON.

**.2 PAINTWORK AFTER ERECTION:**

a) AFTER INSTALLATION ANY CHIPS OR SCRATCH MARKS SHALL BE MADE GOOD ON SITE WITH BRUSH APPLIED EPOXY PAINT.

b) AN INTERIM LAYER ACCORDING TO SABS 681 TYPE I SHALL BE APPLIED TO A FINAL THICKNESS OF 25 MICRON.

**.3 FINAL FINISHING LAYER:**

A FINAL ENAMEL LAYER ACCORDING TO SABS 630 GRADE 1 SHALL BE APPLIED WITHIN 24 HOURS AFTER THE INTERIM LAYER HAS BEEN APPLIED, TO A FINAL THICKNESS OF 25 MICRON (DARK ADMIRALTY GREY).

MOD NO.	REVISION	SIGNATURE & DATE
SCHOOL SANITATION PROGRAM LIMPOPO PROVINCE  LIMPOPO PROVINCIAL DEPARTMENT OF EDUCATION		
		MVULA TRUST 9A LANDROS MARE STR POLOKWANE 0699
		
<b>GENSET TROLLEY</b>		
DRAWN	DRAWING NO.	
CHECKED		MVULA-010-08
SCALE	SCALE	