

Characteristics

GENERAL INFORMATION

Recommended installation height	Up to 20m
Components included	Solar module Energy storage enclosure Energy storage unit Charge controller Luminaire
Autonomy days	2 days
System operating voltage	12V DC
Geographical location	Designed and optimised for various locations
Weight (kg)	55kg (excludes pole)
Wind speed rating	144km/h
Aerodynamic resistance (CxS)	At 5° panel rake angle, including the side mounted energy storage enclosure: 0.312m ² (side) 0.411m ² (front)

MATERIAL

Energy storage enclosure	Corrosion-free glass-reinforced polymer (GRP)
Brackets and fixation clamps	Hot-dipped galvanised mild steel
Solar module fixation	Extruded aluminium
Solar module	Extruded aluminium Tempered glass
Pole	Hot-dipped galvanised graded steel GRP Pole - single unit (optional)

SOLAR MODULE

Technology / Rated lifetime	Monocrystalline 120 cell module: 25 years / 80%
Peak rated wattage	330-350W
Robustness	Hail and corrosion resistant

ENERGY STORAGE

Technology / Expected lifetime	Lithium: 5-7 years
Weight per unit	Lithium: 13.6kg
Maintenance free	Yes

CHARGE CONTROLLER

Charge algorithm	Maximum Power Point Tracking (MPPT)
Rated lifetime	20 years
Integrated data logger	Yes: Up to 30 days
Integrated dawn/dusk switch	Yes

LUMINAIRE

Housing and finish

Housing	Marine grade high-pressure die-cast aluminium (EN 1706 AC-44300)
Protector	High-impact clear glass High-impact polycarbonate (optional)
Housing finish	Unpainted aluminium
Tightness level	IP 66
Impact resistance	IK 07 Polycarbonate: IK 10

Optical information

LED colour temperature	4000K (Neutral white 740)
Colour rendering index (CRI)	≥ 70 (Neutral white 740)

Operating conditions

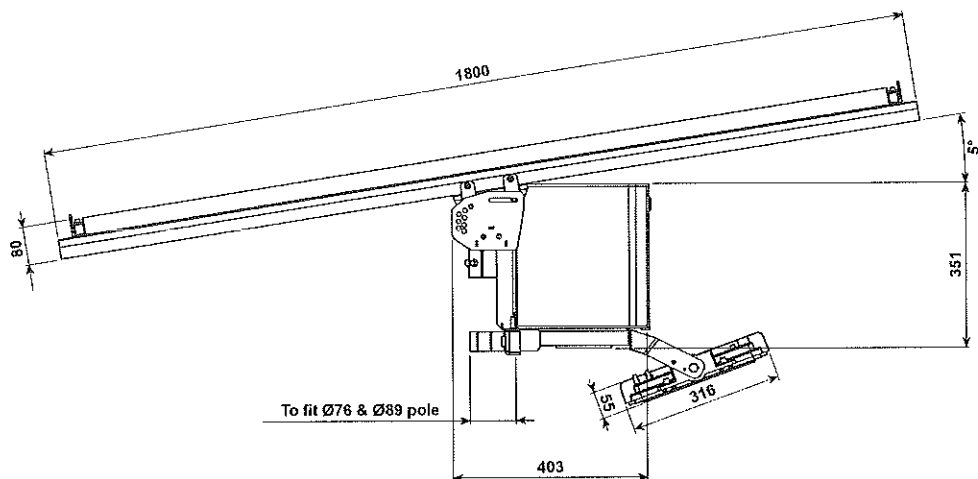
Operating temperature range (Ta)	-40°C up to +45°C
----------------------------------	-------------------

Lifetime of the LEDs @ tq 25°C

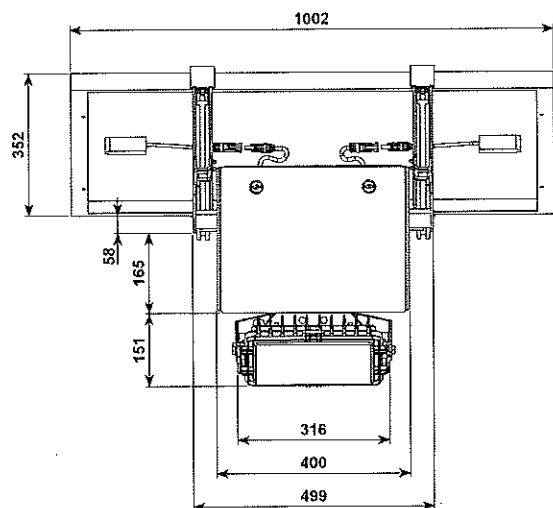
For all versions	100,000h - L95B10
------------------	-------------------

Dimensions in mm

Side view



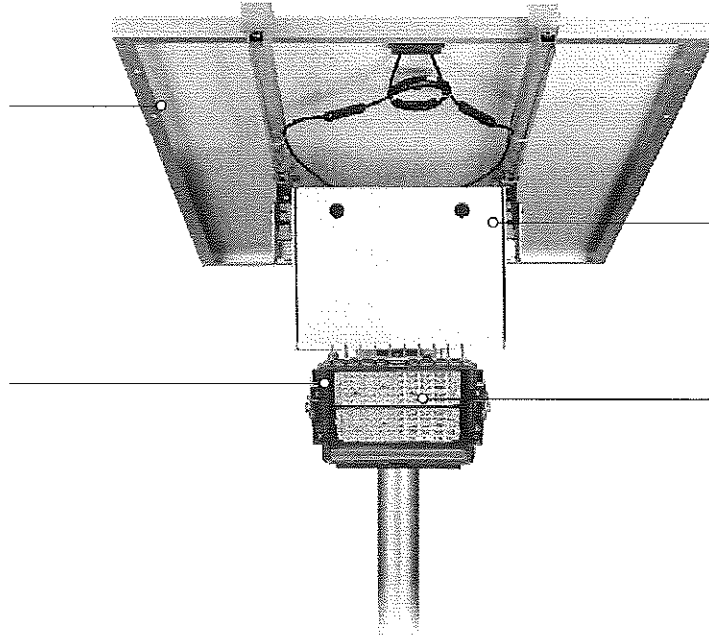
Front view



Key Features

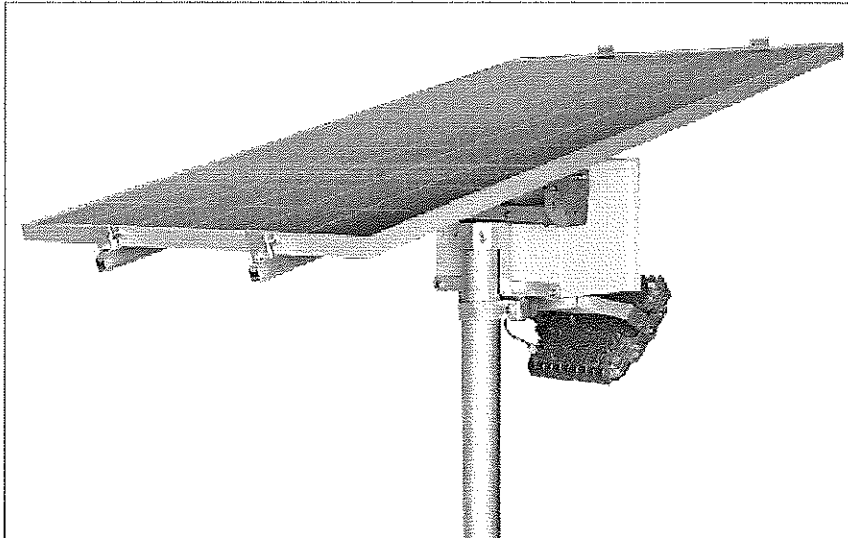
Highly efficient Monocrystalline solar module technology to maximise solar energy conversion

Corrosion-resistant marine grade high-pressure die-cast aluminium housing (EN 1706 AC-44300)

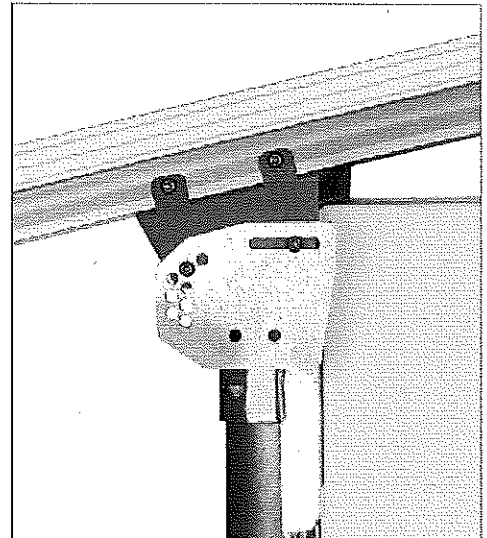


Corrosion-resistant energy storage enclosure (IP 65)

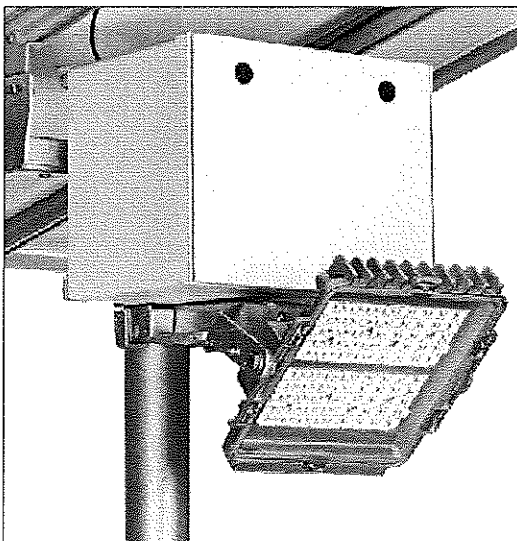
High luminaire efficacy (up to 162lm/W)



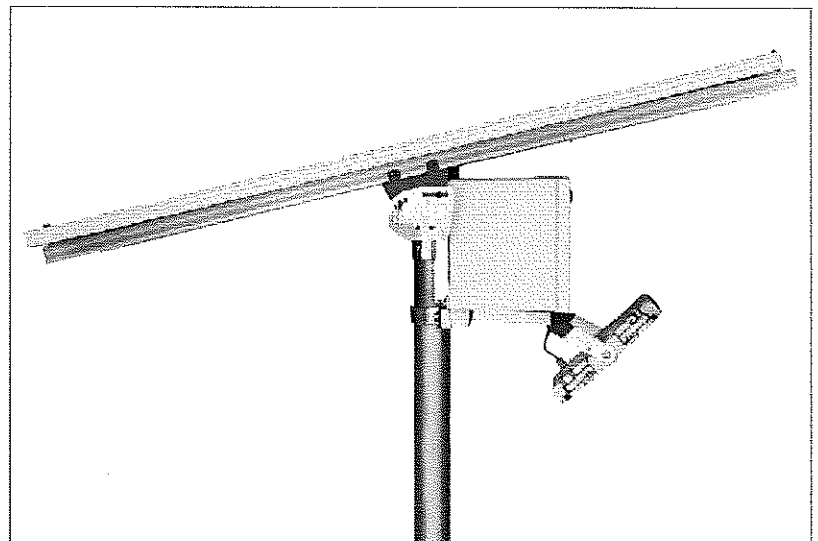
Corrosion-resistant hot-dipped galvanised spigot assembly



Adjustable solar module inclination angle optimised for various geographical locations



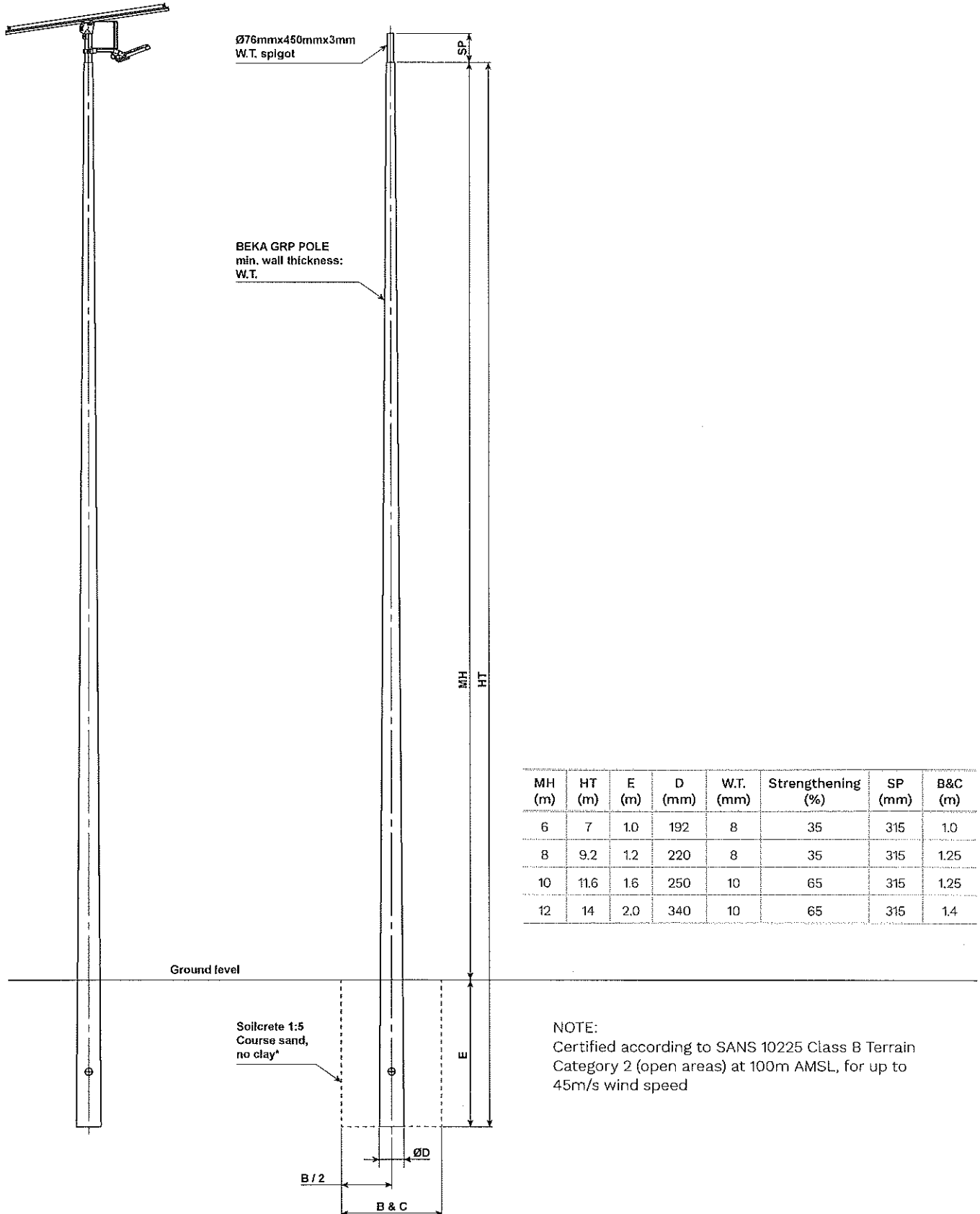
Corrosion-resistant GRP energy storage enclosure with optional key locking door



Luminaire is adjustable from 0° to +70°

GRP Pole Option

Aerodynamic resistance:
 0.312m² (side)
 0.411m² (front)



MH (m)	HT (m)	E (m)	D (mm)	W.T. (mm)	Strengthening (%)	SP (mm)	B&C (m)
6	7	1.0	192	8	35	315	1.0
8	9.2	1.2	220	8	35	315	1.25
10	11.6	1.6	250	10	65	315	1.25
12	14	2.0	340	10	65	315	1.4

NOTE:
 Certified according to SANS 10225 Class B Terrain
 Category 2 (open areas) at 100m AMSL, for up to
 45m/s wind speed

* Please note: Only indicative, dependent on soil condition. After evaluating site conditions, please contact certified structural engineer.