

**SANRAL**

SOUTH AFRICAN NATIONAL ROADS AGENCY SOC LTD



Reg.No.1998/009584/30

BUILDING SOUTH AFRICA  
THROUGH BETTER ROADS

**THE SOUTH AFRICAN NATIONAL  
ROADS AGENCY SOC LIMITED**

**CONTRACT SANRAL R.072-020-2018/2**

**THE IMPROVEMENT WITHIN ALEXANDRIA ON  
NATIONAL ROUTE R72 SECTION 1 KM 48.70 TO  
KM 49.85 AND SECTION 2 KM 0.00 TO KM 2.76**

**PROJECT DOCUMENT**

DATE: MARCH 2024

TENDER DOCUMENT  
VOLUME 3  
BOOK 1 OF 3

**CHIEF EXECUTIVE OFFICER  
SOUTH AFRICAN NATIONAL ROADS AGENCY SOC LIMITED  
48 TAMBOTIE AVENUE  
VAL DE GRACE  
PRETORIA, 0184**

**NAME OF TENDERER: .....**



## **CONTRACT SANRAL R.072-020-2018/2**

**FOR**

## **THE IMPROVEMENT WITHIN ALEXANDRIA ON NATIONAL ROUTE R72 SECTION 1 KM 48.70 TO KM 49.85 AND SECTION 2 KM 0.00 TO KM 2.76**

## **PROJECT DOCUMENT**

DATE: MARCH 2024

TENDER DOCUMENT  
VOLUME 3  
BOOK 1 OF 3

THIS DOCUMENT COMPILED UNDER THE DIRECTION OF THE REGIONAL  
MANAGER  
THE SOUTH AFRICAN NATIONAL ROADS AGENCY SOC LIMITED

The Regional Manager (Southern Region)  
The South African National Roads Agency SOC Ltd  
20 Shoreward Drive  
Baywest  
Gqeberha, 6025

## LIST OF CONTRACT DOCUMENTS

The following documents form part of this contract:

- Volume 1: The Conditions of Contract for Construction for Building and Engineering Works Designed by the Employer (1999), published by the Federation Internationale des Ingenieurs-Conseils (FIDIC) which the tenderer shall purchase himself. (See note 1 below).
- Volume 2: The COTO Standard Specifications for Road and Bridge Works for South African Road Authorities (Draft Standard October 2020 edition), issued by the Committee of Transport Officials which the tenderer shall obtain himself. (See Note 2 below).
- Volume 3: The Project Document, containing the tender notice, Conditions of Tender, Tender Data, Returnable Schedules, general and particular conditions of contract, project specifications, Pricing Schedule, Form of offer and Project Information is issued by the Employer (see note 3 below). The Employer's Form of Acceptance and any correspondence from the selected tenderer, performance security-demand guarantee, and all addenda issued during the period of tender will also form part of this volume once a successful tenderer has been appointed.

The conditions of tender are the standard conditions of tender as contained in Annexure C of the STANDARD FOR UNIFORMITY IN ENGINEERING AND CONSTRUCTION WORKS CONTRACTS, AUGUST 2019: Standard conditions of tender, document, which the tenderer may download himself from the CIDB website

<https://www.cidb.org.za/download/100/procurement-documents-templates-and-guidelines/6157/standard-for-uniformity-august-2019.pdf>

- Volume 4: The road works drawings.
- Volume 5: The structural drawings.
- Volume 6: Materials investigation and utilisation.
- Volume 7: Environmental Management Plan report.
- Volume 8: The electrical drawings:
- Volume 8A: SANS 10098-1:2007 or as per latest amendments for South African National Roads Standard public lighting.
- Volume 8B: SANS 60598-1:2014 Edition 6 IEC 60598-1:2014 General requirements and tests on lights.
- Volume 8C: SANS 10142-1 and SANS 10142-2 Part 2: Medium-voltage installations above 1 kV a.c. not exceeding 22 kV a.c. and up to and including 3 MVA installed capacity.

**Notes to tenderer:**

1. **Volume 1: The Conditions of Contract for Construction for Building and Engineering Works Designed by the Employer (1999), published by the Federation Internationale des Ingenieurs-Conseils (FIDIC), is obtainable from CESA, P. O. Box 68482, Bryanston, 2021. Tel: (011) 463 2022 Fax: (011) 463 7383, e-mail: general@cesa.co.za**
2. **Volume 2: The COTO Standard Specifications for Road and Bridge Works for South African Road Authorities (Draft Standard October 2020 edition) is obtainable from SANRAL and can be downloaded free of charge from the SANRAL's website [www.nra.co.za](http://www.nra.co.za).**
3. **Volume 3 is issued at tender stage in electronic format downloaded from the SANRAL's website**

**The link contains the following files:**

- **The full Project Document in .pdf format (excluding the standard conditions of tender)**
- **The returnable forms in word format**
- **The pricing data in Excel format**

**The Standard Conditions of Tender may be downloaded from the CIDB website on the following link:**

**<https://www.cidb.org.za/download/100/procurement-documents-templates-and-guidelines/6157/standard-for-uniformity-august-2019.pdf>**

**At contract stage Volume 3 will be a bound signed paper copy containing the following documents:**

- **Returnable schedules relevant to the project**
- **Agreements and Contract Data**
- **Pricing Data**
- **Scope of Work**
- **Project Information**

4. **SUBMISSION OF TENDER – Of the contract documents, only the following elements of Volume 3 needs to be submitted printed and bound hard copy and electronically on flash drive marked “Main Tender (followed by the Tenderer name)” in a sealed envelope, in the following order :**
  - **Form of Offer (signed and scanned as .pdf and hard copy);**
  - **All returnable schedules and attachments and certificates (signed and scanned as .pdf and hard copy);**
  - **Completed pricing schedule (scanned copy in .pdf and copy in Excel and hard copy).**

**Information provided by a tenderer over and above the above elements of volume 3 shall be treated as information only and will only be bound into the document if the tenderer notes on Form A4: Schedule of Variations or deviations that the information has a bearing on the tender price.**

5. **For alternative offers the tenderer shall submit the following additional documentation, printed and bound hard copy and electronically in a separate flash drive marked “Alternative (followed by the Tenderer name)” in a sealed envelope in the following order:**
  - **Form of Offer (signed and scanned as .pdf and state “Alternative Form of Offer” and hard copy);**
  - **All returnable schedules and attachments and certificates applicable to the alternative offer (signed and scanned as .pdf).**
  - **Alternative Pricing Schedule (scanned copy in .pdf and copy in Excel).**
  - **Other relevant information.**
6. **Volume 8: The SANS codes specified in Volume 8A, 8B and 8C can be obtained from the SABS store: <https://store.sabs.co.za/>.**

| <b>TABLE OF CONTENTS</b> |   | <b>PAGE</b> |
|--------------------------|---|-------------|
| <b>PART T1:</b>          | <b>TENDERING PROCEDURES .....</b>         | <b>T-1</b>  |
| <b>PART T2:</b>          | <b>RETURNABLE SCHEDULES .....</b>         | <b>T-22</b> |
| <b>PART C1:</b>          | <b>AGREEMENTS AND CONTRACT DATA .....</b> | <b>C1-1</b> |
| <b>PART C2:</b>          | <b>PRICING DATA.....</b>                  | <b>C2-1</b> |
| <b>PART C3:</b>          | <b>SCOPE OF WORKS .....</b>               | <b>C3-1</b> |
| <b>PART C4:</b>          | <b>SITE INFORMATION .....</b>             | <b>C4-1</b> |
| <b>PART C3:</b>          | <b>ANNEXURES .....</b>                    | <b>C5-1</b> |

---

# **PART T1: TENDERING PROCEDURES**

---

## **PART T1: TENDERING PROCEDURES**

| <b>TABLE OF CONTENTS</b> |   | <b>PAGE</b> |
|--------------------------|---|-------------|
| T1.1                     | TENDER NOTICE AND INVITATION TO TENDER (INCORPORATING SBD1) ..... | T-4         |
| T1.2                     | TENDER DATA .....   | T-76        |

SOUTH AFRICAN NATIONAL ROADS AGENCY SOC LIMITED

CONTRACT SANRAL R.072-020-2018/2  
FOR THE IMPROVEMENT WITHIN ALEXANDRIA ON NATIONAL ROUTE R72 SECTION 1 KM 48.70  
TO KM 49.85 AND SECTION 2 KM 0.00 TO KM 2.76

**T1.1 TENDER NOTICE AND INVITATION TO TENDER (Incorporating SBD1)**



SOUTH AFRICAN NATIONAL ROADS AGENCY SOC LIMITED

CONTRACT SANRAL R.072-020-2018/2  
FOR THE IMPROVEMENT WITHIN ALEXANDRIA ON NATIONAL ROUTE R72 SECTION 1 KM 48.70  
TO KM 49.85 AND SECTION 2 KM 0.00 TO KM 2.76

**T1.1 TENDER NOTICE AND INVITATION TO TENDER (Incorporating SBD1)**

The South African National Roads Agency SOC Limited (SANRAL) invites tenders for the improvement within Alexandria on National Route R72 Section 1 km 48.70 to km 49.85 and Section 2 km 0.00 to km 2.76. This project is in the province of the Eastern Cape in the Sarah Baartman district municipality and Ndlambe local municipality. The approximate duration is 15 months including 3 months for the Mobilisation Period.

CIDB Regulation 25(1B) will not be applicable to this contract.

Only tenderers who are registered on the National Treasury Central Supplier Database as stated in the Tender Data C.2.1.1, are eligible to tender.

It is a requirement of this project that the successful tenderer subcontract a minimum of 30 percent (30 %) or higher as tendered of the work by the end of the contract to Targeted Enterprise(s) as defined in the Contract Data.

It is estimated that tenderers should have a CIDB contractor grading designation of 8CE or higher, however tenderers attention is drawn to clause C.2.1.1 of the Tender Data when submitting their tender.

Tenders from tenderers registered as potentially emerging enterprises but with a CIDB contractor grading designation lower than a contractor grading designation determined in accordance with the sum tendered, or a value determined in accordance with Regulation 25(7A) of the Construction Industry Development Regulations, will not be accepted.

**TENDER DOCUMENTS**

Tender documents are available from 8 March 2024 at no cost in electronic format downloaded from the SANRAL's website by the following link:

[https://www.nra.co.za/sanral-tenders/status?region\\_id=national](https://www.nra.co.za/sanral-tenders/status?region_id=national)

Tenderers must have access to MS Office ©2013 and Acrobat Adobe ©9.0, or similar compatible software.

Tenderers must submit, via email, the duly completed Form A1.1 Certificate of Intention to Submit a Tender prior to 15 March 2024. Failure to submit this certificate would result in the tenderer not receiving addenda or additional issued information and may result in the tenderer being non-responsive, if "any material amendment/s" contained in the addenda or additional information is not included in the tender offer/submission.

**TENDERER'S MEETING**

A tender clarification briefing presentation is available to be downloaded from the SANRAL website by the following link: [https://www.nra.co.za/sanral-tenders/status?region\\_id=national](https://www.nra.co.za/sanral-tenders/status?region_id=national) A non-compulsory clarification briefing meeting will be held via a virtual platform on 20 March 2024 where the project will be presented. A link to the clarification briefing meeting will be sent to tenderers who complete and submit a Certificate of Intention to Submit a Tender (Form A1.1).

A tenderer's representative cannot represent more than one tenderer at the tender briefing meeting.

## **COMPLETION AND DELIVERY OF TENDERS**

The closing time for receipt of tenders is 11:00 on 19 April 2024

Telegraphic, telephonic, telex, email, facsimile and late tenders will not be accepted.

Tenders may only be submitted in the format as stated in the Tender Data.

Requirements for sealing, addressing, delivery, opening and assessment of tenders are stated in the Tender Data.

Queries relating to issues arising from these documents may be addressed to:

E-mail: [ProcurementSR6@sanral.co.za](mailto:ProcurementSR6@sanral.co.za)

SOUTH AFRICAN NATIONAL ROADS AGENCY SOC LIMITED

CONTRACT SANRAL R.072-020-2018/2  
FOR THE IMPROVEMENT WITHIN ALEXANDRIA ON NATIONAL ROUTE R72 SECTION 1 KM 48.70  
TO KM 49.85 AND SECTION 2 KM 0.00 TO KM 2.76

**T1.2 TENDER DATA**

## T1.2 TENDER DATA

The conditions of tender are the standard conditions of tender as contained in Annexure C of the CIDB STANDARD FOR UNIFORMITY IN ENGINEERING AND CONSTRUCTION WORKS CONTRACTS as per Government Notice No. 423 published in Government Gazette No. 42622 of 08 AUGUST 2019 and as amended from time to time.

<https://www.cidb.org.za/wp-content/uploads/2021/07/Standard-for-Uniformity-August-2019.pdf>

The standard conditions of tender make several references to the tender data for details that apply specifically to this tender. The tender data shall have precedence in the interpretation of any ambiguity or inconsistency between the tender data and the standard conditions of tender.

Each item of data given below is cross-referenced to the clause marked “C” in the above mentioned Standard Conditions of Tender.

### Definitions

Add to the following to the definition:

Wherever reference is made in the documentation to bill of quantities it shall also mean schedule of quantities.

Each item of data given below is cross-referenced to the clause in the standard conditions of tender to which it mainly applies.

| Clause Number | Data   |
|---------------|--|
| C.1           | <b>GENERAL</b>   |
| C.1.1         | <b>Actions</b><br><br>The Employer is The South African National Road Agency SOC Limited (SANRAL). The Employer’s domicilium citandi et executandi (permanent physical business address) is:<br><br>48 Tambotie Avenue<br>Val De Grace, Pretoria, 0184<br><br>The Employer’s address for communication relating to this project is:<br>20 Shoreward Drive<br>Baywest<br>Gqeberha<br>6025 |

| Clause Number | Data  |
|---------------|---|
| C.1.2         | <p><b>Tender Documents</b></p> <p>The tender documents issued by the Employer comprise:</p> <p><b>Part T1: Tendering Procedures</b><br/> T1.1 Tender notice and invitation to tender .....(White)<br/> T1.2 Tender data .....(Pink)</p> <p><b>Part T2: Returnable Schedules</b><br/> T2.1 List of returnable documents ..... (Yellow)<br/> T2.2 Returnable schedules ..... (Yellow)</p> <p><b>Part C1: Agreements and contract data</b><br/> C1.1 Form of offer and acceptance ..... (Yellow)<br/> C1.2 Contract data..... (Yellow)</p> <p><b>Part C2: Pricing data</b><br/> C2.1 Pricing instructions (assumptions) ..... (Yellow)<br/> C2.2 Pricing Schedules / Bills of Quantities ..... (Yellow)</p> <p><b>Part C3: Scope of work</b><br/> C3 Scope of work .....(Blue)</p> <p><b>Part C4: Project Information</b><br/> C4 Project Information .....(Green)</p> <p><b>Part C5: Annexures</b> .....(White)</p> |
| C.1.4         | <p><b>Communication and employer's agent</b></p> <p>The Employer's Agent during the tender period can be contacted at<br/><br/> ProcurementSR6@sanral.co.za</p>   |
| C.1.5.3       | Not applicable  |
| C.1.6.2       | <p><b>Competitive negotiation procedure</b></p> <p>Clause C.1.6.2 is not applicable.</p>  |
| C.1.6.3       | <p><b>Proposal procedure using the two stage-system</b></p> <p>Clause C.1.6.3 is not applicable.</p>  |
| C.2           | <b>Tenderer's Obligations</b>   |
| C.2.1         | <p><b>Eligibility</b></p> <p>Only those tenderers who satisfy the following eligibility criteria are eligible to submit tenders:</p> <p>a) CIDB registration (Form A12)</p> <p>Only those tenderers who are registered with the CIDB, or are capable of being so prior to the evaluation of submissions, in a contractor grading designation equal to or higher than a contractor grading designation determined in accordance with the sum tendered, or a value determined in accordance with Regulation 25 (1B) or 25(7A) of the Construction Industry Development Regulations, for a 8CE class of construction work, are eligible to have their tenders evaluated.</p>   |

| Clause Number      | Data  |   |  |                              |      |          |   |      |            |      |            |      |            |      |             |      |             |      |             |      |              |
|--------------------|---|---|--|------------------------------|------|----------|---|------|------------|------|------------|------|------------|------|-------------|------|-------------|------|-------------|------|--------------|
|                    | <p>Joint ventures are eligible to submit tenders provided that:</p> <ol style="list-style-type: none"> <li>1. every member of the joint venture is registered with the CIDB;</li> <li>2. the lead partner has a contractor grading designation in the 8CE class of construction work; or not lower than one level below the required grading designation in the class of works construction works under considerations and possess the required recognition status.</li> <li>3. the combined contractor grading designation calculated in accordance with the Construction Industry Development Regulations is equal to or higher than a contractor grading designation determined in accordance with the sum tendered for a CE class of construction work or a value determined in accordance with Regulation 25 (1B) or 25(7A) of the Construction Industry Development Regulations.</li> </ol> <p>Tenderers whose CIDB registration expires within the tender validity period, need to demonstrate that there is a reasonable chance of being registered in the appropriate grading designation during the tender evaluation period, by submitting a copy of their timely application for CIDB registration, with their tender submission.</p> <p>Tenderers registered as potentially emerging enterprises but with a CIDB contractor grading designation lower than a contractor grading designation determined in accordance with the sum tendered, or a value determined in accordance with Regulation 25(7A) of the Construction Industry Development Regulations, are not eligible to have their tenders evaluated.</p> <table border="1" data-bbox="507 996 1485 1348"> <thead> <tr> <th data-bbox="507 996 687 1088">Category of tender</th> <th data-bbox="687 996 1241 1088">Upper limits per CIDB Regulation 17 (effective 7 October 2019)</th> <th data-bbox="1241 996 1485 1088">Employer's allowable margins</th> </tr> </thead> <tbody> <tr> <td data-bbox="507 1088 687 1122">CE 1</td> <td data-bbox="687 1088 1241 1122">R500 000</td> <td data-bbox="1241 1088 1485 1348" rowspan="8">The Employer will use its discretion in terms of CIDB Practice Note 3 on allowable margins to be accepted</td> </tr> <tr> <td data-bbox="507 1122 687 1155">CE 2</td> <td data-bbox="687 1122 1241 1155">R1 000 000</td> </tr> <tr> <td data-bbox="507 1155 687 1189">CE 3</td> <td data-bbox="687 1155 1241 1189">R3 000 000</td> </tr> <tr> <td data-bbox="507 1189 687 1223">CE 4</td> <td data-bbox="687 1189 1241 1223">R6 000 000</td> </tr> <tr> <td data-bbox="507 1223 687 1256">CE 5</td> <td data-bbox="687 1223 1241 1256">R10 000 000</td> </tr> <tr> <td data-bbox="507 1256 687 1290">CE 6</td> <td data-bbox="687 1256 1241 1290">R20 000 000</td> </tr> <tr> <td data-bbox="507 1290 687 1323">CE 7</td> <td data-bbox="687 1290 1241 1323">R60 000 000</td> </tr> <tr> <td data-bbox="507 1323 687 1348">CE 8</td> <td data-bbox="687 1323 1241 1348">R200 000 000</td> </tr> </tbody> </table> <p>This contract is not classified in terms of CIDB Regulation 25(1B), and the value of the contract may, for the purpose of CIDB Regulation 25(1), not be taken at its annual value.</p> <p>The tender will be declared non-responsive if:</p> <ul style="list-style-type: none"> <li>- The Tenderer is not registered on CIDB within the required contractor grading and category prior to evaluation of submission.</li> <li>- The Tenderer is suspended and where the tenderer has not provided proof that they have settled their outstanding CIDB annual fees or proof that they have made arrangements to pay outstanding CIDB annual fees has been made or proof of compliance with tax was submitted to CIDB, the tender will be declared non-responsive.</li> <li>- The Tenderer has not declared interest of application to upgrade the grading.</li> </ul> <p>b) National Treasury Central Supplier Database (Form A3.4)</p> <p>Tenderers, or in the event of a joint venture, each member of the joint venture, must be registered on the National Treasury Central Supplier Database at the closing date for tender submissions. If not registered as verified online at tender closing; the tender will be declared non-responsive.</p> | Category of tender  | Upper limits per CIDB Regulation 17 (effective 7 October 2019) | Employer's allowable margins | CE 1 | R500 000 | The Employer will use its discretion in terms of CIDB Practice Note 3 on allowable margins to be accepted | CE 2 | R1 000 000 | CE 3 | R3 000 000 | CE 4 | R6 000 000 | CE 5 | R10 000 000 | CE 6 | R20 000 000 | CE 7 | R60 000 000 | CE 8 | R200 000 000 |
| Category of tender | Upper limits per CIDB Regulation 17 (effective 7 October 2019)  | Employer's allowable margins  |  |                              |      |          |   |      |            |      |            |      |            |      |             |      |             |      |             |      |              |
| CE 1               | R500 000  | The Employer will use its discretion in terms of CIDB Practice Note 3 on allowable margins to be accepted |  |                              |      |          |   |      |            |      |            |      |            |      |             |      |             |      |             |      |              |
| CE 2               | R1 000 000  |   |  |                              |      |          |   |      |            |      |            |      |            |      |             |      |             |      |             |      |              |
| CE 3               | R3 000 000  |   |  |                              |      |          |   |      |            |      |            |      |            |      |             |      |             |      |             |      |              |
| CE 4               | R6 000 000  |   |  |                              |      |          |   |      |            |      |            |      |            |      |             |      |             |      |             |      |              |
| CE 5               | R10 000 000   |   |  |                              |      |          |   |      |            |      |            |      |            |      |             |      |             |      |             |      |              |
| CE 6               | R20 000 000   |   |  |                              |      |          |   |      |            |      |            |      |            |      |             |      |             |      |             |      |              |
| CE 7               | R60 000 000   |   |  |                              |      |          |   |      |            |      |            |      |            |      |             |      |             |      |             |      |              |
| CE 8               | R200 000 000  |   |  |                              |      |          |   |      |            |      |            |      |            |      |             |      |             |      |             |      |              |

| <b>Clause Number</b> | <b>Data</b>  |
|----------------------|--|
| C.2.2                | <p><b>Cost of tendering</b></p> <p>Tender documents are available from SANRAL website at no cost.</p>  |
| C.2.6                | <p><b>Acknowledge addenda</b></p> <p>Failure to apply instructions contained in addenda issued by the Employer will render a Tenderer's offer non-responsive in terms of Condition of Tender C.3.8. Test for Responsiveness.</p>   |
| C.2.7                | <p><b>Clarification meeting</b></p> <p>A non-compulsory clarification briefing meeting will be held via a virtual platform on 20 March 2024 at 11:00 where the project will be presented. A link to the clarification briefing meeting will be sent to tenderers who complete and submit a Certificate of Intention to Submit a Tender (Form A1.1).</p> <p>The onus rests with the tenderer to ensure that the representative reading the clarification briefing presentation is appropriately qualified to understand all directives and clarifications given in the presentation.</p> <p>The signature on the duly completed and signed Form A1 shall be considered proof that the tenderer read the whole clarification briefing presentation and clearly understood all directives and clarifications given in the presentation.</p> <p>A tenderer's representative cannot represent more than one tenderer at the tender clarification briefing meeting.</p> <p>The onus rests with the tenderer to ensure that the representative attending the briefing session is appropriately qualified to understand all directives and clarifications given in the briefing session.</p> <p>The signature on the duly completed and signed Form A1 shall be considered proof that the tenderer attended the whole clarification briefing session and clearly understood all directives and clarifications given in the session.</p> <p>A tenderer's representative cannot represent more than one tenderer at the tender clarification briefing meeting.</p> <p>The onus rests with the tenderer to ensure that the representative attending the briefing session is appropriately qualified to understand all directives and clarifications given in the briefing session.</p> <p>The signature on the duly completed and signed Form A1 shall be considered proof that the tenderer attended the whole clarification briefing session and clearly understood all directives and clarifications given in the session.</p> |
| C.2.8                | <p><b>Seek clarification</b></p> <p>Request clarifications at least 12 (twelve) working days before the closing date.</p>  |
| C.2.9                | <p><b>Insurance</b></p> <p>No insurance is provided by the Employer.</p>   |
| C.2.10<br>C.2.10.3   | <p><b>Pricing the tender offer</b></p> <p>The rates and prices shall be adjusted as specified in the conditions of contract clause 13.8 Adjustments for Changes in Costs</p>   |

| Clause Number   | Data   |
|---|--|
| C.2.10.4  | Tenderers are required to state the rates, amounts and currencies in Rand.   |
| <p data-bbox="277 241 389 271">C.2.12</p> <p data-bbox="277 304 389 333">C.2.12.1</p> | <p data-bbox="427 241 743 271"><b>Alternative tender offers</b></p> <p data-bbox="427 304 1509 577">A tenderer wishing to submit an alternative offer (excluding alternative offers of different contract duration, retention guarantees, discounted offers or different compliant material sources) shall first apply to the Employer for confirmation that the Employer's standards and requirements envisaged in the design are not compromised or reduced. Such confirmation must have been provided by the Employer in writing at least 5 (five) working days before the date of tender closing, or as extended by an addendum sent to all tenderers. The application shall not be submitted later than 7 (seven) working days before the date of tender closing given in Tender Data clause C.2.15, or as extended by an addendum sent to all tenderers.</p> <p data-bbox="427 611 1509 884">The replacement of specified construction items like pipes, in situ culverts, kerbs and channels with similar products constructed of different materials (e.g. plastic products or pre-cast construction) are generally not acceptable as alternatives because construction using such alternative products would have been considered during the design stage and not selected as appropriate and because the Employer is able, post-award, to make proposals to or receive proposals from the contractor. However, if such alternative materials are considered acceptable by the employer's agent as giving the tenderer a financial advantage and/or not transferring risk, the qualification must be recorded on returnable schedule A4: Schedule of Deviations or Qualifications by Tenderer.</p> <p data-bbox="427 918 1509 1003">Also, not acceptable as alternative offers are the submission of alternative key persons, alterations to contingency pay items provided in the bill of quantities (pricing schedule), fixed prices for individual items or a fixed price contract.</p> <p data-bbox="427 1037 1509 1279">If an alternative proposal is confirmed to be acceptable, calculations, drawings and all other pertinent technical information and characteristics as well as proposed modification of, or alternative to, the Pricing Data must be submitted with the alternative tender offer to enable the Employer to evaluate the efficacy of the alternative and its principal elements, to take a view on the degree to which the alternative complies with the Employer's standards and requirements and to evaluate the acceptability of the pricing proposals. Calculations must be set in clear and logical sequence and must clearly reflect all design assumptions. Pricing Data must reflect all assumptions in the development of the pricing proposal.</p> <p data-bbox="427 1312 1509 1585">Should an alternative structural design be proposed, the proposed alternative Pricing Data shall include an amount equal to 3% of the amount tendered for the alternative offer to cover the Employer's costs of confirming the acceptability of the detailed design before it is constructed. If the alternative offer is accepted, this amount will serve as a negative prime cost sum under Part C section C1.2 to be deducted from the contractor's payment certificates. The Employer undertakes to provide full accounting of the amount expended for this contingent sum and if exceeded, no further payments shall be deducted. Failure by a tenderer to include the required amount for confirming the alternative design may render his alternative tender as non-responsive.</p> <p data-bbox="427 1619 1509 1740">Acceptance of an alternative offer will mean acceptance in principle of the offer. It will be an obligation of the contract with the tenderer, in the event that the alternative is accepted, to accept full responsibility and liability that the alternative offer complies in all respects with the Employer's standards and requirements.</p> |
| C.2.13  | <b>Submitting a tender offer</b>   |
| C.2.13.2  | <p data-bbox="427 1839 1522 1899">The returnable documents shall be electronically completed in their entirety, submitted on the issued software format or fully compatible format, unless otherwise specified.</p> <p data-bbox="427 1933 900 1962">Option 1: Submission in the tender box</p> <p data-bbox="427 1995 1522 2042">Submit the tender offer electronically on a flash drive and printed hard copy of Form of Offer and summary of pricing schedule.</p>  |



| Clause Number | Data   |
|---------------|--|
|               | (In the relevant MS Word 2013 and MS Excel 2013 format as issued, and not in .pdf format, except where so specified.)  |
| C.2.13.3      | <p>Only the following needs to be submitted:</p> <p>Volume 3 – Scanned on a flash drive<br/>The following information has to be submitted on flash drive:<br/>The 1st file in pdf format which contains:</p> <ul style="list-style-type: none"> <li>- Scanned copy of Form of Offer (pdf) and printed hardcopy of Form of Offer</li> <li>- Scanned copies of all returnable schedules and attachments (pdf)</li> </ul> <p>A 2nd file in Excel format</p> <ul style="list-style-type: none"> <li>- Completed pricing schedule (scanned copy in .pdf and copy in Excel) and printed hardcopy of Summary of Pricing Schedule</li> </ul> <p>Alternative offers will not be considered.</p> <p>In the event of any discrepancy between the contents of the electronically priced schedule and the electronically provided pricing schedule in pdf format, the contents of the provided pdf format shall be taken as the valid contents. For the information provided by the tenderer as part of his submission, e.g. rates, the signed print-out shall be taken as the valid submission.</p>  |
| C.2.13.5      | <p><b>Option 1: Submission in the tender box</b></p> <p>Only the following needs to be submitted:</p> <p>a) Main Tender Offer<br/>The following information to be submitted electronically on flash drive and marked Main Tender Offer followed by the “Tenderer name”, in the following order:</p> <ul style="list-style-type: none"> <li>- Form of Offer (signed and scanned as .pdf) and printed hardcopy of Form of Offer</li> <li>- All returnable schedules and attachments and certificates specific to the tender (signed and scanned as .pdf)</li> <li>- Completed pricing schedule (scanned copy in .pdf and copy in Excel) and printed hardcopy of Summary of Pricing Schedule</li> </ul> <p>b) For alternative offers the tenderer shall submit the following additional documentation, in an electronically on a separate flash drive marked Alternative followed by the “Tenderer name”:</p> <ul style="list-style-type: none"> <li>- Form of Offer (signed and scanned as .pdf and state “Alternative Form of Offer”) and printed hardcopy of Form of Offer.</li> <li>- All returnable schedules and attachments and certificates applicable to the alternative offer (signed and scanned as .pdf)</li> <li>- Alternative Pricing Schedule (scanned copy in .pdf and copy in Excel) and printed hardcopy of Summary of Pricing Schedule</li> <li>- Other relevant information.</li> </ul> <p>In the event of any discrepancy between the contents of the electronically priced schedule in Excel, and the electronically provided pricing schedule in .pdf format, the contents of the electronically pricing schedule in .pdf format shall be taken as the valid contents. For the information provided by the tenderer as part of his submission, e.g. rates, the electronically signed schedule in .pdf shall be taken as the valid submission.</p> <p>Submit the tender offer electronically on a flash drive in a sealed envelope marked with the tenderer’s company name, the project number and description.</p> |
| C.2.13.6      | Clause not applicable  |

| <b>Clause Number</b> | <b>Data</b>   |
|----------------------|---|
| C.2.13.7             | Place and seal the electronically completed tender document (flash drive) in an envelope or package clearly marked "TENDER" and bearing the Employer's name, the contract number and description, the tenderer's authorised representative's name, the tenderer's postal address and contact telephone numbers.   |
| C.2.14               | <p><b>Information and data to be completed in all respects</b></p> <p>Provided that the omission is not a material omission, the Employer reserves the right to condone the omission and may waive any nonconformities in the tender.</p> <p>Provided that the omission is not a material omission, the Employer reserves the right to condone the omission and may request the tenderer to submit the necessary information or documentation, within a reasonable period of time, to rectify nonmaterial nonconformities in the tender related to documentation requirements.</p>  |
| C.2.15               | <b>Closing time</b>   |
| C.2.15.1             | <p><b>Option 1</b></p> <p><b>Submission in tender box</b></p> <p>The Employer's address for delivery of tender offers and identification details to be shown on each tender offer package are:</p> <p>Location of tender box: Reception area<br/> Physical address: The Regional Manager (Southern Region)<br/> The South African National Roads Agency SOC Ltd<br/> 20 Shoreward Drive<br/> Bay West<br/> GQEBERHA<br/> 6025</p> <p>Identification details: Mark the envelope with the tenderer's company name, the project number and description:</p> <p>CONTRACT SANRAL R.072-020-2018/2<br/> FOR THE IMPROVEMENT WITHIN ALEXANDRIA ON NATIONAL ROUTE R72 SECTION 1 KM 48.70 TO KM 49.85 AND SECTION 2 KM 0.00 TO KM 2.76</p> <p>Tenders must be submitted during hours (09:00 to 16:00) Monday to Friday at the Employer's address.</p> <p>It is in the tenderer's interest to ensure that the delivery of the tender offer is recorded in the Employer's tenders received register and deposited in the tender box.</p> |
| <b>C.2.16</b>        | <b>Tender offer validity</b>  |
| C.2.16.1             | The tender offer validity period is 24 weeks.   |
| C.2.16.2             | Should the tenderer not accept the validity extension or if the tenderer does not withdraw a condition attached to a conditional acceptance, this shall result in a non-responsive tender or the tender is considered to have made an election to exclude itself from the tender process.   |
| C.2.16.3             | Where a tenderer, at any time after the opening of his tender offer but prior to entering into a contract based on his tender offer: <ol style="list-style-type: none"> <li>withdraws his tender;</li> <li>gives notice of his inability to execute the contract in terms of his tender; or</li> <li>fails to comply with a request made in terms of C.2.17, C.2.18 or C.3.9,</li> </ol>  |

| Clause Number      | Data   |
|--------------------|--|
|                    | such tenderer shall be barred from tendering on any of the Employer's tenders for a period to be determined by the Employer, but not less than six (6) months from a date determined by the Employer. This sanction also applies to tenders under evaluation and not yet awarded. This sanction does not apply to tenders under evaluation where a request for extension of the validity period was not accepted by the tenderer. The Employer may fully or partly exempt a tenderer from the provisions of this condition if he is of the opinion that the circumstances justify the exemption.   |
| C.2.18<br>C.2.18.1 | <b>Provide other material</b><br>Any additional information requested under this clause must be provided within 5 (five) working days of date of request.  |
| C.3                | <b>The Employer's undertakings</b>   |
| C.3.1<br>C.3.1.1   | <b>Respond to requests from the tenderer</b><br>The Employer shall respond to clarifications received up to 12 (twelve) working days before tender closing date.<br><br>The Employer shall respond to any clarifications from the tenderers emanating from the addenda until 3 (three) working days before tender closing date.  |
| C.3.2              | <b>Issue Addenda</b><br><br>The Employer shall issue addenda until 10 (ten) working days before tender closing date.   |
| C.3.4<br>C.3.4.1   | <b>Opening of tender submissions</b><br>The time for opening of the tender offers via live streaming are:<br><br>Time: 11h00 on 19 April 2024.<br><br>Location of tender box: Reception area<br>Physical address:     The Regional Manager (Southern Region)<br>The South African National Roads Agency SOC Ltd<br>20 Shoreward Drive<br>Bay West<br>GQEBERHA<br>6025  |
| C.3.5              | <b>Two-envelope system</b><br><br>Clause C.3.5 is not applicable.  |
| C.3.7              | <b>Grounds for rejection and disqualification</b><br><br>Prior to disqualification, the Employer shall inform the tenderer and give the tenderer an opportunity to make representations within 14 days as to why the tender submitted should not be disqualified and as to why the tenderer should not be restricted by the National Treasury from conducting any business with any organ of state for a period not exceeding 10 years.<br><br>In the event of disqualification, the Employer may, at its sole discretion, claim damages from the tenderer and impose a specified period during which tender offers will not be accepted from the offending tenderer and, the Employer shall inform the National Treasury and the CIDB in writing. |
| C.3.8              | <b>Test for responsiveness</b>   |

| Clause Number | Data   |
|---------------|--|
| C.3.8.2       | <p>A Substantially responsive tender is a tender in which all of the material information and documentation submitted at close of tender contains non-material and non-conformities to the bid specifications but are not related to price. The correction of any such documentation or information, or the condonement for the non-inclusion of any such document or information may not be prejudicial towards the offer and claimed preference of any responsive tender or be construed to be giving an unfair advantage to any tender.</p> <p>A responsive tender is also one that conforms to all the terms, conditions, and scope of work of the tender documents, without material omissions. The test for a material omission is the same as the test for a material deviation or qualification.</p> |
| C.3.9         | <p><b>Arithmetical errors, omissions, discrepancies and imbalanced unit rates</b></p>  |
| C.3.9.1       | <p>Check responsive tenders for discrepancies between amounts in words and amounts in figures. Where there is a discrepancy between the amounts in figures and the amount in words, the amount appearing in the summary to the Pricing Schedule shall govern.</p>  |
| C.3.9.3       | <p>Check responsive tender offers for:</p> <ul style="list-style-type: none"> <li>a) the gross misplacement of the decimal point in any unit rate;</li> <li>b) omissions made in completing the pricing schedule or bills of quantities; or</li> <li>c) arithmetic errors in: <ul style="list-style-type: none"> <li>i) line item totals resulting from the product of a unit rate and a quantity in bills of quantities or schedules of prices; or</li> <li>ii) the summation of the prices.</li> </ul> </li> <li>d) imbalanced unit rates.</li> </ul> <p>Notify shortlisted tenderers of all errors, omissions or imbalanced rates that are identified in their tender offers and either confirm the tender offers as tendered or accept the corrected total prices.</p>                                   |

| Clause Number | Data  |
|---------------|---|
| C.3.9.4       | <p>Where the tenderer elects to confirm the correction of the errors, omissions or imbalanced rates, the tender offer shall be corrected as follows:</p> <ol style="list-style-type: none"> <li>a) If bills of quantities or pricing schedules apply and there is an error in the line item total resulting from the product of the unit rate and the quantity, the unit rate shall govern, and the line item total shall be corrected. Where there is an obviously gross misplacement of the decimal point in the unit rate, the line item total as quoted and the unit rate shall be corrected.</li> <li>b) Where there is an error in the total of the prices either as a result of other corrections required by this checking process or in the tenderer's addition of prices, the total of the prices shall be corrected.</li> <li>c) Where the unit rates are imbalanced the tenderer shall adjust such rates by increasing or decreasing them and selected others while retaining the total of the prices derived after any other corrections made under (a) and (b) above.</li> </ol> <p>Where there is an omission of a line item, no correction is possible, and the offer may be declared non-responsive.</p> <p>Should the original price not be retained after balancing, the tenderer will be rendered non-responsive.</p> <p>Declare as non-responsive and reject any offer from a tenderer who elects not to accept the proposed correction of the; errors, omissions or imbalanced rates.</p> <p>During testing of tender responsiveness, clause C.3.8 of CIDB tender conditions will be applicable.</p> <p>The tenderer is required to submit balanced unit rates for rate only items in the pricing schedule. The rates submitted for these items will be taken into account in the evaluation of tenders.</p> <p>If the Form of Offer is submitted but the Pricing Schedule is omitted, where rate only items are applicable; or If a signed Form of Offer is submitted with an incomplete pricing schedule (no summary to tender) that does not balance back to the Form of Offer and the Pricing schedule is incomplete; or If a signed Form of Offer is submitted with an incomplete pricing schedule that does not balance back to the Form of Offer and only summary of Pricing Schedule submitted; then the rates cannot be evaluated and the tender shall be declared non-responsive.</p> |

| Clause Number  | Data  |                  |            |           |  |                  |            |              |                |       |       |                |      |                |      |                |      |                |      |                |      |                |      |                |      |                           |      |
|----------------|---|------------------|------------|-----------|--|------------------|------------|--------------|----------------|-------|-------|----------------|------|----------------|------|----------------|------|----------------|------|----------------|------|----------------|------|----------------|------|---------------------------|------|
| C.3.11.        | <p data-bbox="435 181 879 210"><b>Evaluation of price and preference</b></p> <p data-bbox="435 241 1500 302">The tender will be evaluated in terms of Preferential Procurement Policy Framework Act (PPPFA, Act 5 of 2000).</p> <p data-bbox="467 333 1497 394"><b>i. 80/20 preference point system for acquisition of goods and services for Rand value equal to or above R2 000 and up to R50 million</b></p> <p data-bbox="435 425 1329 454">The following formula will be used to calculate the points out of 80 for price:</p> <p data-bbox="435 486 703 515"><math>P_s = 80(1 - (P_t - P_m) / P_m)</math></p> <p data-bbox="435 546 523 575">Where:</p> <ul data-bbox="483 607 1270 703" style="list-style-type: none"> <li>- <math>P_s</math> is the points scored for price of tender under consideration.</li> <li>- <math>P_t</math> is the price of the tender under consideration; and</li> <li>- <math>P_m</math> is the price of the lowest acceptable tender.</li> </ul> <p data-bbox="467 734 1497 795"><b>ii. 90/10 preference point system for acquisition of goods and services for Rand value above R50 million</b></p> <p data-bbox="435 853 1329 882">The following formula will be used to calculate the points out of 90 for price:</p> <p data-bbox="435 913 703 943"><math>P_s = 90(1 - (P_t - P_m) / P_m)</math></p> <p data-bbox="435 974 523 1003">Where:</p> <ul data-bbox="483 1034 1270 1131" style="list-style-type: none"> <li>- <math>P_s</math> is the points scored for price of tender under consideration.</li> <li>- <math>P_t</math> is the price of the tender under consideration; and</li> <li>- <math>P_m</math> is the price of the lowest acceptable tender.</li> </ul> <p data-bbox="435 1162 1457 1191">In the event that the calculated value is negative, the allocated score shall be 0 (zero).</p> <p data-bbox="435 1223 900 1252"><b>Scoring preference (Specific Goals):</b></p> <p data-bbox="435 1283 1259 1312">Points for specific goals will be awarded according to the table below:</p> <table border="1" data-bbox="435 1344 1481 1805"> <thead> <tr> <th data-bbox="435 1344 770 1449" rowspan="2">Specific goals</th> <th data-bbox="770 1344 1126 1449" rowspan="2">Criteria</th> <th colspan="2" data-bbox="1126 1344 1481 1384">10 points</th> </tr> <tr> <th data-bbox="1126 1384 1315 1449">Point allocation</th> <th data-bbox="1315 1384 1481 1449">Max points</th> </tr> </thead> <tbody> <tr> <td data-bbox="435 1449 770 1805" rowspan="9">B-BBEE level</td> <td data-bbox="770 1449 1126 1489">B-BBEE Level 1</td> <td data-bbox="1126 1449 1315 1489">10.00</td> <td data-bbox="1315 1449 1481 1805" rowspan="9">10.00</td> </tr> <tr> <td data-bbox="770 1489 1126 1529">B-BBEE Level 2</td> <td data-bbox="1126 1489 1315 1529">9.00</td> </tr> <tr> <td data-bbox="770 1529 1126 1570">B-BBEE Level 3</td> <td data-bbox="1126 1529 1315 1570">6.00</td> </tr> <tr> <td data-bbox="770 1570 1126 1610">B-BBEE Level 4</td> <td data-bbox="1126 1570 1315 1610">5.00</td> </tr> <tr> <td data-bbox="770 1610 1126 1650">B-BBEE Level 5</td> <td data-bbox="1126 1610 1315 1650">4.00</td> </tr> <tr> <td data-bbox="770 1650 1126 1691">B-BBEE Level 6</td> <td data-bbox="1126 1650 1315 1691">3.00</td> </tr> <tr> <td data-bbox="770 1691 1126 1731">B-BBEE Level 7</td> <td data-bbox="1126 1691 1315 1731">2.00</td> </tr> <tr> <td data-bbox="770 1731 1126 1771">B-BBEE Level 8</td> <td data-bbox="1126 1731 1315 1771">1.00</td> </tr> <tr> <td data-bbox="770 1771 1126 1805">Non-compliant contributor</td> <td data-bbox="1126 1771 1315 1805">0.00</td> </tr> </tbody> </table> <p data-bbox="435 1805 1114 1834"><i>A valid B-BBEE verification certificate must be submitted.</i></p> <p data-bbox="435 1865 1506 2047">1. The tenderer's scorecard shall be a B-BBEE Certificate issued in accordance with: <ul style="list-style-type: none"> <li>- the amended Construction Sector Codes published in Notice 931 of 2017 of Government Gazette No. 41287 on 1 December 2017 by the Department of Trade and Industry; or</li> <li>- in the event that the Measured Entity operates in more than one sector or a sub-sector, the scorecard for the sector or sub-sector in which the majority of its core</li> </ul> </p> | Specific goals   | Criteria   | 10 points |  | Point allocation | Max points | B-BBEE level | B-BBEE Level 1 | 10.00 | 10.00 | B-BBEE Level 2 | 9.00 | B-BBEE Level 3 | 6.00 | B-BBEE Level 4 | 5.00 | B-BBEE Level 5 | 4.00 | B-BBEE Level 6 | 3.00 | B-BBEE Level 7 | 2.00 | B-BBEE Level 8 | 1.00 | Non-compliant contributor | 0.00 |
| Specific goals | Criteria  |                  |            | 10 points |  |                  |            |              |                |       |       |                |      |                |      |                |      |                |      |                |      |                |      |                |      |                           |      |
|                |   | Point allocation | Max points |           |  |                  |            |              |                |       |       |                |      |                |      |                |      |                |      |                |      |                |      |                |      |                           |      |
| B-BBEE level   | B-BBEE Level 1  | 10.00            | 10.00      |           |  |                  |            |              |                |       |       |                |      |                |      |                |      |                |      |                |      |                |      |                |      |                           |      |
|                | B-BBEE Level 2  | 9.00             |            |           |  |                  |            |              |                |       |       |                |      |                |      |                |      |                |      |                |      |                |      |                |      |                           |      |
|                | B-BBEE Level 3  | 6.00             |            |           |  |                  |            |              |                |       |       |                |      |                |      |                |      |                |      |                |      |                |      |                |      |                           |      |
|                | B-BBEE Level 4  | 5.00             |            |           |  |                  |            |              |                |       |       |                |      |                |      |                |      |                |      |                |      |                |      |                |      |                           |      |
|                | B-BBEE Level 5  | 4.00             |            |           |  |                  |            |              |                |       |       |                |      |                |      |                |      |                |      |                |      |                |      |                |      |                           |      |
|                | B-BBEE Level 6  | 3.00             |            |           |  |                  |            |              |                |       |       |                |      |                |      |                |      |                |      |                |      |                |      |                |      |                           |      |
|                | B-BBEE Level 7  | 2.00             |            |           |  |                  |            |              |                |       |       |                |      |                |      |                |      |                |      |                |      |                |      |                |      |                           |      |
|                | B-BBEE Level 8  | 1.00             |            |           |  |                  |            |              |                |       |       |                |      |                |      |                |      |                |      |                |      |                |      |                |      |                           |      |
|                | Non-compliant contributor   | 0.00             |            |           |  |                  |            |              |                |       |       |                |      |                |      |                |      |                |      |                |      |                |      |                |      |                           |      |

| Clause Number | Data  |
|---------------|---|
|               | <p>activities (measured in terms of annual revenue) are located will be acceptable. The tenderer must comply with the annual revenue thresholds for EME or QSE or Generic in accordance with the amended Construction Sector Codes; and</p> <ol style="list-style-type: none"> <li data-bbox="507 271 1501 331">i. The scorecard shall be submitted as a certificate attached to Returnable Schedule Form C1; and</li> <li data-bbox="507 331 1501 696">ii. The certificate shall: <ul style="list-style-type: none"> <li data-bbox="568 360 1086 389">- be valid at the tender closing date; and</li> <li data-bbox="568 389 1501 450">- have been issued by a verification agency accredited by the South African National Accreditation System (SANAS); or</li> <li data-bbox="568 450 1501 674">- be in the form of a sworn affidavit or a certificate issued by the Companies and Intellectual Property Commission in the case of an Exempted Micro Enterprise (EME) with a total annual revenue of less than R3 million if issued in accordance with the amended Construction Sector Codes published in Notice 931 of 2017 of Government Gazette No. 41287 on 1 December 2017 by the Department of Trade and Industry; and</li> <li data-bbox="568 629 1501 696">- have a date of issue less than 12 (twelve) months prior to the original advertised tender closing date (see Tender Data C.2.15); and</li> </ul> </li> <li data-bbox="507 696 1501 1182">iii. A valid BBBEE Certificates shall contain: <ul style="list-style-type: none"> <li data-bbox="568 725 1501 786">- Name of enterprise as per enterprise registration documents issued by CIPC, and enterprise business address.</li> <li data-bbox="568 786 1155 815">- Value-Added Tax number, where applicable.</li> <li data-bbox="568 815 1501 904">- The B-BBEE Scorecard against which the certificate is issued, indicating all elements and scores achieved for each element. The actual score achieved must be linked to the total points as per the relevant Codes.</li> <li data-bbox="568 904 1401 934">- B-BBEE status with corresponding procurement recognition level.</li> <li data-bbox="568 934 1442 963">- The relevant Codes used to issue the B-BBEE verification certificate.</li> <li data-bbox="568 963 1501 1122">- Date of issue and expiry (e.g. 9 June 2018 to 8 June 2019). Where a measured entity was subjected to a re-verification process, due to material change, the B-BBEE Verification Certificate must reflect the initial date of issue, date of re-issue and the initial date of expiry. Re-verification does not extend the lifespan of the B-BBEE Verification Certificate.</li> <li data-bbox="568 1122 1501 1182">- Financial period which was used to issue the B-BBEE Verification Certificate</li> </ul> </li> <li data-bbox="507 1182 1501 1823">iv. A valid Sworn Affidavit shall contain: <ul style="list-style-type: none"> <li data-bbox="568 1211 1501 1272">- Name/s of deponent as they appear in the identity document and the identity number.</li> <li data-bbox="568 1272 1501 1361">- Designation of the deponent as either the director, owner or member must be indicated in order to know that person is duly authorised to depose of an affidavit.</li> <li data-bbox="568 1361 1501 1422">- Name of enterprise as per enterprise registration documents issued by the CIPC, where applicable, and enterprise business address.</li> <li data-bbox="568 1422 1501 1482">- Percentage black ownership, black female ownership and whether they fall within a designated group.</li> <li data-bbox="568 1482 1501 1543">- Indicate total revenue for the year under review and whether it is based on audited financial statements or management accounts.</li> <li data-bbox="568 1543 1501 1639">- Financial year-end as per the enterprise's registration documents, which was used to determine the total revenue. The valid format of the Financial Year-End is Day/Month/Year</li> <li data-bbox="568 1639 1417 1668">- B-BBEE status level. An enterprise can only have one status level.</li> <li data-bbox="568 1668 1501 1729">- Date deponent signed and date of Commissioner of Oath must be the same.</li> <li data-bbox="568 1729 1501 1823">- Commissioner of Oath cannot be an employee or ex officio of the enterprise because, a person cannot by law, commission a sworn affidavit in which they have an interest, and</li> </ul> </li> <li data-bbox="507 1823 1501 1883">v. Compliance with any other information requested to be attached to Returnable Schedule Form C1; and</li> <li data-bbox="507 1883 1501 2002">vi. In the event of a Joint Venture (JV), a project-specific consolidated (SANRAL project number indicated) valid B-BBEE verification certificate in the name of the JV, issued by a verification agency accredited by the South African National Accreditation System (SANAS) shall be submitted.</li> </ol> |

| Clause Number | Data  |
|---------------|---|
|               | <p><b>Sub-contracting</b></p> <p>If the tender documents indicate that the tenderer intends sub-contracting more than 25% of the value of the contract to any other person not qualifying for at least the status level that the tenderer qualifies for, 0 (zero) points for B-BBEE level (under Specific Goals) shall be awarded, unless the intended sub-contractor is an EME that has the capacity to execute the sub-contract.</p> <p><b>Criteria for breaking deadlock</b></p> <p>If two or more tenders score the same number of points and these tenders are also the highest ranked tenders, the tender with the highest preference points will be recommended for award.</p> <p>If functionality is part of the evaluation process and two or more tenders score equal total points and equal preference points, the tender that scored the highest points for functionality will be recommended for award.</p> <p>If two or more tenders score the same number of financial points and preference points and these tenders are also the highest ranked tenders, the tenderer to be recommended for award will be decided by the drawing of lots.</p>  |
| C.3.13        | <p><b>Acceptance of a tender offer</b></p> <p>The conditions stated in clauses C..13(a) to (f) of the Conditions of Tender as well as the following additional clauses C.3.13(g) to (l) shall be applied as objective criteria in terms of section 2(1)(f) of the Preferential Procurement Policy Framework Act, 2000 and as compelling and justifiable reasons in terms of Conditions of Tender clause 5.11:</p> <ul style="list-style-type: none"> <li>g) the tenderer or any of its directors is not listed on the Register of Tender Defaulters in terms of the Prevention and Combating of Corrupt Activities Act of 2004 as a person prohibited from doing business with the public sector;</li> <li>h) the tenderer has not abused the Employer's supply chain management system;</li> <li>i) the tenderer has not failed to perform on any previous contract and has not been given a written notice to this effect; and</li> <li>j) the tenderer is tax compliant. The recommended tenderer who becomes non-compliant, prior to award, shall be notified and must become compliant within 7 working days of the date of being notified. A recommended tenderer who remains non-compliant after the 7 working days of being notified, shall be declared non-responsive.</li> <li>k) the tenderer is registered and in good standing with the compensation fund or with a licensed compensation insurer. The licensed compensation insurer shall be approved by Department of Labour in terms of Section 80 of the Compensation for Injury and Disease Act, 1993 (Act No. 130 of 1993).</li> <li>l) Price negotiations       <ol style="list-style-type: none"> <li>1. If the price offered by a tenderer scoring the highest points is not market related, the Organ of state may not award the tender to that tenderer.</li> <li>2. The Organs of state may –           <ol style="list-style-type: none"> <li>i. Negotiate a market related price with the tender scoring the highest points or cancel the tender;</li> <li>ii. If the tenderer does not agree to a market related price, negotiate a market related price with the tenderer scoring the second highest points or cancel the tender;</li> <li>iii. If the tenderer scoring the second highest points does not agree to a market related price, negotiate a market related price with the tenderer scoring the third highest points or cancel the tender;</li> </ol> </li> <li>3. If a market related price is not agreed as envisaged in paragraph 2(iii), the organ of state must cancel the tender.</li> </ol> </li> </ul> <p>In addition to the requirements under paragraph (b) of the Conditions of Tender, in the event that a due diligence is performed as part of the tender evaluation, the due diligence report will be used to evaluate the tenderer's ability to perform the contract as stated in</p> |



| Clause Number                                | Data  |                     |             |                    |   |                |           |   |            |                     |
|--|---|---------------------|-------------|--------------------|---|----------------|-----------|---|------------|---------------------|
|  | <p>paragraph (b). The due diligence will evaluate the overall risk associated with the tender. The due diligence will take into consideration the following:</p> <ul style="list-style-type: none"> <li>- Assessment of financial statements to assess the financial position of the tenderer and its ability to obtain the necessary guarantees or insurances,</li> <li>- Evaluation of managerial and technical ability &amp; available resources in relation to the proposed tender,</li> <li>- Integrity Risk Evaluation,</li> <li>- Operations, Activities, Locations and Key Customers,</li> <li>- Reference checks from previous clients, and</li> <li>- Risk rating (i.e. High Risk, Medium to High risk, Medium risk or Low risk) of the tenderer</li> <li>- Past Contracts comprising the following quantities of work completed satisfactorily and certified by the Engineer to demonstrate capacity and capability in relation to the proposed tender:</li> </ul> <table border="1" style="margin-left: auto; margin-right: auto;"> <thead> <tr> <th>COTO CHAPTER</th> <th>DESCRIPTION</th> <th>QUANTITY COMPLETED</th> </tr> </thead> <tbody> <tr> <td style="text-align: center;">9</td> <td style="text-align: center;">Asphalt Layers</td> <td style="text-align: center;">7000 Tons</td> </tr> <tr> <td style="text-align: center;">5</td> <td style="text-align: center;">BSM1 layer</td> <td style="text-align: center;">9000 m<sup>3</sup></td> </tr> </tbody> </table> | COTO CHAPTER        | DESCRIPTION | QUANTITY COMPLETED | 9 | Asphalt Layers | 7000 Tons | 5 | BSM1 layer | 9000 m <sup>3</sup> |
| COTO CHAPTER                                 | DESCRIPTION   | QUANTITY COMPLETED  |             |                    |   |                |           |   |            |                     |
| 9  | Asphalt Layers  | 7000 Tons           |             |                    |   |                |           |   |            |                     |
| 5  | BSM1 layer  | 9000 m <sup>3</sup> |             |                    |   |                |           |   |            |                     |
| C.3.16                                       | <p><b>Registration of the award</b></p> <p>SANRAL will notify unsuccessful tenderers when the tender process has been concluded. Any unsuccessful tenderer may request a debriefing in writing as specified in clause C.3.18.</p>   |                     |             |                    |   |                |           |   |            |                     |
| C.3.17                                       | <p><b>Provide copies of the contracts</b></p> <p>The number of paper copies of the signed contract to be provided by the Employer is 1.</p>   |                     |             |                    |   |                |           |   |            |                     |
| C.3.18                                       | <p><b>Provide written reasons for actions taken</b></p> <p>All requests shall be in writing.</p>  |                     |             |                    |   |                |           |   |            |                     |
| <b>SPECIAL CONDITIONS OF TENDER CLAUSES:</b> |   |                     |             |                    |   |                |           |   |            |                     |
| Clause Number                                | Data  |                     |             |                    |   |                |           |   |            |                     |
| SC3.19                                       | <p><b>Jurisdiction</b></p> <p>Unless stated otherwise in the tender data, each tenderer and the Employer undertake to accept the jurisdiction of the law courts of the Republic of South Africa.</p>  |                     |             |                    |   |                |           |   |            |                     |

---

# **PART T2: RETURNABLE SCHEDULES**

---

**T.2.1 LIST OF RETURNABLE SCHEDULES**

The tenderer must complete the following returnable schedules:

**Notes to tenderer:**

1. Returnable schedules have been based on the CIDB Standard for Uniformity in Construction Procurement and incorporate National Treasury requirements within them. Returnable schedules are separated into the following categories:
  - Forms, certificates and schedules for completion by the tenderer for use in the quantitative and qualitative evaluation of the tender (Forms A to E)
  - A list of all returnable documents for completion by the tenderer (Form F1)
2. Failure to submit fully completed relevant returnable documents may render such a tender offer non-responsive.
3. Tenderers shall note that their signature appended to each returnable form represents a declaration that they vouch for the accuracy and correctness of the information provided.
4. Notwithstanding any check or audit conducted by or on behalf of the Employer, the information provided in the returnable documents is accepted in good faith and as justification for entering into a contract with a tenderer. If subsequently any information is found to be incorrect such discovery shall be taken as wilful misrepresentation by that tenderer to induce the contract. In such event:
  - a. the Employer shall inform the tenderer and give the tenderer an opportunity to make representations within 14 days as to why the tender submitted should not be disqualified and as to why the tenderer should not be restricted by the National Treasury from conducting any business with any organ of state for a period not exceeding 10 years;
  - b. if the Employer has already entered into a contract with the Tenderer, the Employer has the discretionary right under FIDIC Particular Condition 15.2(g) to terminate the contract.
5. These forms must be completed in non-erasable ink and any alterations made prior to tender closure countersigned by an authorised signatory.

## PART T2: RETURNABLE SCHEDULES

| <b>TABLE OF CONTENTS</b>  | <b>PAGE</b> |
|---|-------------|
| FORM A1: CERTIFICATE CONFIRMING THAT THE TENDERER READ THE PRESENTATION BRIEFING .....  | T-25        |
| FORM A1.1: CERTIFICATE OF INTENTION TO SUBMIT A TENDER.....   | T-26        |
| FORM A2.1: CERTIFICATE OF AUTHORITY FOR SIGNATORY .....   | T-27        |
| FORM A2.2: DECLARATION OF TENDERER'S CURRENT STATUS OF ANY DEBT OUTSTANDING TO SANRAL .....   | T-28        |
| FORM A2.3: CERTIFICATE OF SINGLE TENDER SUBMISSION .....  | T-29        |
| FORM A2.4: CERTIFICATE OF FRONTING PRACTICES .....  | T-30        |
| FORM A2.5: DECLARATION OF DOMESTIC PROMINENT INFLUENTIAL PERSONS, FOREIGN PROMINENT PUBLIC OFFICIALS AND FOREIGN INFLUENTIAL NATIONALS (DPIPS, FPPOS & FINS)..... | T-32        |
| FORM A2.6: CERTIFICATE OF PERMISSION TO CONDUCT DUE DILIGENCE INVESTIGATION .....   | T-35        |
| FORM A3.1: BIDDER'S DISCLOSURE .....  | T-36        |
| FORM A3.2: CERTIFICATE OF INDEPENDENT TENDER (INCORPORATING SBD9) – REPEALED & NOT APPLICABLE .....   | T-39        |
| FORM A3.3: DECLARATION OF TENDERER'S PAST SUPPLY CHAIN MANAGEMENT PRACTICES (INCORPORATING SBD8)- REPEALED & NOT APPLICABLE .....                                 | T-41        |
| FORM A3.4: REGISTRATION ON NATIONAL TREASURY CENTRAL SUPPLIER DATABASE  | T-43        |
| FORM A3.5: DECLARATION CERTIFICATE FOR LOCAL PRODUCTION AND CONTENT FOR DESIGNATED SECTORS (SBD 6.2) .....  | T-44        |
| FORM A3.6: LOCAL CONTENT DECLARATION: SUMMARY SCHEDULE (ANNEXURE C) ....  | T-50        |
| FORM A4: SCHEDULE OF DEVIATIONS OR QUALIFICATIONS BY TENDERER.....  | T-54        |
| FORM A5: SCHEDULE OF ADDENDA TO TENDER DOCUMENTS .....  | T-55        |
| FORM A6: CERTIFICATE OF TAX COMPLIANCE (INCORPORATING SBD2).....  | T-56        |
| FORM A7: CERTIFICATE OF INSURANCE COVER .....   | T-57        |
| FORM A8: TENDERER'S REGISTERED FINANCIAL SERVICE PROVIDER LETTER AND BANK DETAILS .....   | T-58        |
| FORM A9.1: SCHEDULE OF TENDERER'S LITIGATION HISTORY .....  | T-61        |
| FORM A9.2: ENVIRONMENTAL, SOCIAL, HEALTH, AND SAFETY PERFORMANCE DECLARATION .....  | T-62        |
| FORM A9.3: COMPLIANCE WITH LABOUR LEGISLATION DECLARATION .....   | T-62        |
| FORM A10: SCHEDULE OF CURRENT COMMITMENTS .....   | T-63        |
| FORM A11: CERTIFICATE OF COMPLIANCE WITH COMPENSATION FOR OCCUPATIONAL INJURIES AND DISEASES ACT, 1993 (ACT NO. 130 OF 1993) .....                                | T-65        |
| FORM A12: CERTIFICATE OF REGISTRATION WITH CIDB .....   | T-66        |
| FORM A13: FORM SBD1 – INVITATION TO BID AND TERMS AND CONDITIONS FOR BIDDING .....  | T-67        |
| FORM B1: CONTRACTOR'S ESTABLISHMENT ON SITE .....   | T-70        |

|            |  |      |
|------------|--|------|
| FORM B2:   | SCHEDULE OF SPECIAL MATERIALS .....  | T-71 |
| FORM C1.1: | TENDERER'S B-BBEE VERIFICATION CERTIFICATE .....   | T-72 |
| FORM C1.2: | PREFERENCE POINTS CLAIM FORM IN TERMS OF THE PREFERENTIAL<br>PROCUREMENT REGULATIONS 2017 (INCORPORATING SBD6.1) ..... | T-74 |
| FORM D1:   | SCHEDULE OF TENDERER'S PLANT AND EQUIPMENT .....   | T-78 |
| FORM D2:   | TENDERER'S METHOD STATEMENT .....  | T-79 |
| FORM D3:   | TENDERER'S ORGANISATION AND STAFFING .....   | T-80 |
| FORM D4.1: | TENDERER'S KEY PERSONNEL EXPERIENCE (CONTRACTS DIRECTOR) .....   | T-81 |
| FORM D4.2: | TENDERER'S KEY PERSONNEL EXPERIENCE (CONTRACTS MANAGER) .....  | T-83 |
| FORM D4.3: | TENDERER'S KEY PERSONNEL EXPERIENCE (CONSTRUCTION MANAGER<br>(CONTRACTOR'S REPRESENTATIVE)) .....                      | T-85 |
| FORM D5.1: | TENDERER'S EXPERIENCE BASED ON COMPLETED PROJECTS .....  | T-87 |
| FORM D5.2: | TENDERER'S EXPERIENCE BASED ON PROJECTS IN PROGRESS .....  | T-89 |
| FORM D6:   | TENDERER'S INDICATIVE PROGRAM .....  | T-91 |
| FORM D7:   | SCHEDULE OF ESTIMATED MONTHLY EXPENDITURE .....  | T-92 |
| FORM D8:   | SCHEDULE OF SUBCONTRACTORS .....   | T-93 |
| FORM D9:   | CORPORATE SOCIAL INVESTMENT .....  | T-94 |
| FORM E5:   | PHOTOMETRIC FILES .....  | T-95 |
| FORM E6:   | LAMP LIFESPAN .....  | T-96 |
| FORM E7:   | ELECTRICAL SCHEDULE OF MATERIALS .....   | T-97 |
| FORM F1:   | SCHEDULE OF TENDER COMPLIANCE .....  | T-99 |

**FORM A1: CERTIFICATE CONFIRMING THAT THE TENDERER READ THE PRESENTATION BRIEFING**

CONTRACT SANRAL R.072-020-2018/2  
FOR THE IMPROVEMENT WITHIN ALEXANDRIA ON NATIONAL ROUTE R72 SECTION 1 KM 48.70  
TO KM 49.85 AND SECTION 2 KM 0.00 TO KM 2.76

This is to certify that I, .....

representative of (tenderer).....

of (address) .....

telephone number .....

fax number .....

e-mail.....

read the clarification presentation presented by the Employer online.

attended the clarification meeting on (date) .....

conducted by .....

in the presence of (Employer's representative) .....

EMPLOYER'S REPRESENTATIVE

(Signature).....Date.....

TENDERER'S REPRESENTATIVE (Signature).....

**FORM A1.1: CERTIFICATE OF INTENTION TO SUBMIT A TENDER**

CONTRACT SANRAL R.072-020-2018/2  
FOR THE IMPROVEMENT WITHIN ALEXANDRIA ON NATIONAL ROUTE R72 SECTION 1 KM 48.70  
TO KM 49.85 AND SECTION 2 KM 0.00 TO KM 2.76

**Notes to Tenderer:**

1. The duly completed certificate of intention to submit a tender must be submitted by whoever intends to tender for this particular tender prior to 15 March 2024. Failure to submit the certificate of intention to tender within the required period may render the tenderer non-responsive and SANRAL does not accept responsibility for any communication not received by the tenderer timeously.
2. Failure to submit this certificate would result in the tenderer not receiving addenda or additional issued information and may result in the tenderer being non-responsive if “any material amendment/s” contained in the addenda or additional information is not included in the tender offer/submission.
3. Late notification of intention to tender by a prospective tenderer will not necessarily result in the tender closing date being extended.
4. Should you intend to submit a tender for this particular tender please sign the certificate, scan and email the completed document to the email address indicated in T1.1 of this tender document.
5. The Employer shall send all correspondences, including Addenda, only to the Tenderer’s email address as provided herein; in addition, the Employer shall upload all correspondences on SANRAL website and National Treasury eTender Portal.

This is to certify that I, .....

representative of (insert name of tenderer) .....

of (address) .....

telephone number .....

fax number .....

e-mail: .....

intends to submit a tender in response to the tender notice and invitation for tender this contract.

TENDERER'S REPRESENTATIVE (Signature): .....

DATE: .....





**FORM A2.2: DECLARATION OF TENDERER'S CURRENT STATUS OF ANY DEBT OUTSTANDING TO SANRAL**

CONTRACT SANRAL R.072-020-2018/2  
FOR THE IMPROVEMENT WITHIN ALEXANDRIA ON NATIONAL ROUTE R72 SECTION 1 KM 48.70 TO KM 49.85 AND SECTION 2 KM 0.00 TO KM 2.76

**Notes to tenderer:**

- 1. The signatory for the tenderer shall complete and sign this form declaring the current status of any debt outstanding to SANRAL.**
- 2. In the event that the tenderer is a Joint Venture, a declaration is required from each member of the Joint Venture.**

I, the undersigned ..... declare that:

- (i) the tenderer or any of its Directors/Members do not have any debt outstanding to SANRAL, other than what is listed below:

.....  
.....  
.....  
.....  
.....

- (ii) the tenderer and/or any of its Directors/Members freely, voluntarily and without undue duress unconditionally authorises the SANRAL to set off any debts agreed to which is due and payable by the tenderer or any of its Directors/Members in terms of this declaration against any moneys due to the tenderer or any of its Directors/Members; and

- (iii) to the best of my knowledge the above information is true and accurate.

SIGNATURE: .....

Signed and sworn before me at ..... on the ..... day of ..... 20...

The deponent having:

- i) acknowledged that he/she knows and understands the contents hereof;
- ii) confirmed that he/she has no objection to the taking of the prescribed oath;
- iii) confirmed that he/she considered the prescribed oath as binding upon his/her conscience; and
- iv) confirmed that the Regulations contained in the Government Gazette Notice R1258 of July 1972 and R1648 of August 1977 have been complied with.

\_\_\_\_\_  
COMMISSIONER OF OATHS

**FORM A2.3: CERTIFICATE OF SINGLE TENDER SUBMISSION**

CONTRACT SANRAL R.072-020-2018/2  
FOR THE IMPROVEMENT WITHIN ALEXANDRIA ON NATIONAL ROUTE R72 SECTION 1 KM 48.70  
TO KM 49.85 AND SECTION 2 KM 0.00 TO KM 2.76

**Notes to tenderer:**

- 1. This certificate serves as a declaration by the tenderer that a single tender was submitted.**
- 2. In the case of a Joint Venture (JV), a separate certificate is to be completed and submitted by each JV member.**

**DECLARATION**

I, the undersigned, ..... in submitting the accompanying tender on behalf of the tenderer do hereby make the following statements that I certify to be true and complete in every respect:

1. I have read and understand the notes to, and the contents of, this certificate.
2. I understand that the accompanying tender and any other tender shall be disqualified in the event that I, including a Joint Venture partner, or Key Person participate in more than 1 (one) tender.

SIGNATURE: .....

DATE: .....

NAME: .....

POSITION: .....

**FORM A2.4: CERTIFICATE OF FRONTING PRACTICES**

CONTRACT SANRAL R.072-020-2018/2  
FOR THE IMPROVEMENT WITHIN ALEXANDRIA ON NATIONAL ROUTE R72 SECTION 1 KM 48.70  
TO KM 49.85 AND SECTION 2 KM 0.00 TO KM 2.76

**Fronting Practices**

**Window-dressing:** This includes cases in which black people are appointed or introduced to an enterprise on the basis of tokenism and may be:

- Discouraged or inhibited from substantially participating in the core activities of an enterprise; and
- Discouraged or inhibited from substantially participating in the stated areas and/or levels of their participation;

**Benefit Diversion:** This includes initiatives implemented where the economic benefits received as a result of the B-BBEE Status of an enterprise do not flow to black people in the ratio as specified in the relevant legal documentation.

**Opportunistic Intermediaries:** This includes enterprises that have concluded agreements with other enterprises with a view to leveraging the opportunistic intermediary's favourable B-BBEE status in circumstances where the agreement involves:

- Significant limitations or restrictions upon the identity of the opportunistic intermediary's suppliers, service providers, clients or customers;
- The maintenance of their business operations in a context reasonably considered improbable having regard to resources; and
- Terms and conditions that are not negotiated at arms-length on a fair and reasonable basis.

**Responsibility to Report Fronting**

In order to effectively deal with the scourge of Fronting, verification agencies, and/or procurement officers and relevant decision makers are encouraged to obtain a signed declaration from the clients or entities that they verify or provide business opportunities to, which states that the client or entity understands and accepts that the verification agency, procurement officer or relevant decision maker may report Fronting practices to **the DTI**. Intentional misrepresentation by measured entities may constitute fraudulent practices, public officials and verification agencies are to report such cases to **the DTI**.

**Fronting Indicators**

|   |
|---|
| <ul style="list-style-type: none"><li>• The black people identified by an enterprise as its shareholders, executives or management are unaware or uncertain of their role within an enterprise;</li></ul>   |
| <ul style="list-style-type: none"><li>• The black people identified by an enterprise as its shareholders, executives or management have roles of responsibility that differ significantly from those of their non-black peers;</li></ul>                                |
| <ul style="list-style-type: none"><li>• The black people who serve in executive or management positions in an enterprise are paid significantly lower than the market norm, unless all executives or management of an enterprise are paid at a similar level;</li></ul> |
| <ul style="list-style-type: none"><li>• There is no significant indication of active participation by black people identified as top management at strategic decision making level;</li></ul>   |
| <ul style="list-style-type: none"><li>• An enterprise only conducts peripheral functions and does not perform the core functions reasonably expected of other, similar, enterprises;</li></ul>  |
| <ul style="list-style-type: none"><li>• An enterprise relies on a third-party to conduct most core functions normally conducted by enterprises similar to it;</li></ul>   |
|   |

|   |
|---|
| <ul style="list-style-type: none"> <li>• An enterprise cannot operate independently without a third-party, because of contractual obligations or the lack of technical or operational competence;</li> </ul>  |
| <ul style="list-style-type: none"> <li>• The enterprise displays evidence of circumvention or attempted circumvention;</li> </ul>   |
| <ul style="list-style-type: none"> <li>• An enterprise buys goods or services at a significantly different rate than the market from a related person or shareholder;</li> </ul>  |
| <ul style="list-style-type: none"> <li>• An enterprise obtains loans, not linked to the good faith share purchases or enterprise development initiatives, from a related person at an excessive rate; and</li> </ul>  |
| <ul style="list-style-type: none"> <li>• An enterprise shares all premises and infrastructure with a related person, or with a shareholder with no B-BBEE status or a third-party operating in the same industry where the cost of such premises and infrastructure is disproportionate to market-related costs.</li> </ul> |

**DECLARATION**

I, the undersigned, ..... in submitting the accompanying tender on behalf of the tenderer do hereby make the following statements that I certify to be true and complete in every respect:

1. I have read and understand the contents of this certificate.
2. I accept that the Employer may report fronting practices to the Department of Trade and Industry and the B-BBEE commissioner.
3. I accept that intentional misrepresentation by measured entities may constitute fraudulent practices that shall be reported to the Department of Trade and Industry and the B-BBEE commissioner.

SIGNATURE: .....

DATE: .....

NAME: .....

POSITION: .....

**FORM A2.5: DECLARATION OF DOMESTIC PROMINENT INFLUENTIAL PERSONS, FOREIGN PROMINENT PUBLIC OFFICIALS AND FOREIGN INFLUENTIAL NATIONALS (DPIPs, FPPOs & FINs)**

CONTRACT SANRAL R.072-020-2018/2

FOR THE IMPROVEMENT WITHIN ALEXANDRIA ON NATIONAL ROUTE R72 SECTION 1 KM 48.70 TO KM 49.85 AND SECTION 2 KM 0.00 TO KM 2.76

**Notes to tenderer:**

1. In line with a policy on Domestic Prominent Influential Persons (DPIP's), Foreign Prominent Public Officials (FPPO's) & Foreign Influential Nationals (FIN's), the purpose of this declaration form is to ensure maintenance and monitoring of the business relationships with prominent, influential stakeholders who have domestic and/or foreign influence as far as the procurement under the management of SANRAL is concerned. This is done to mitigate SANRAL's perceived association, reputational, operational or legal risk, as it strives to foster and maintain fair and transparent business relations. (The policy is available on SANRAL website: [www.nra.co.za](http://www.nra.co.za))
2. It is compulsory that all prospective and existing bidders conducting business with SANRAL, who potentially meet the definition of DPIPs, FPPOs or FINs, complete this form by supplying credible information as required and submit together with their bid document.
3. Bidders are required at the tender stage to declare any DPIPs, FPPOs or FINs involved in their bids, as part of their submission.
4. Further, that bidders shall at the tender stage furnish SANRAL of all information relating to namely, shareholders names, ID numbers and share certificates of the individual and/or transaction concerned using, the form below, for verification purposes, including where applicable, confirmation as it relates to:
  - 4.1. Knowledge of any offence within the meaning of Chapter 2 section 12 & 13 of Prevention and Combating of Corrupt Practices Act no 4 of 2006; and or
  - 4.2. Knowledge of any offence within the meaning of chapter 3 of Prevention of Organised Crime Act no. 121 of 1998 as it relates to any of the shareholders, Directors, Owners and/or individual link to the bidder.
5. Bidders undertake that should it be discovered that the information provided in the form below, is fraudulently or negligently misrepresented then Chapter 9 sec 214 & 216 of Companies Act no 17 of 2008 shall apply to shareholders, Directors, Owners and/or individual link to the bidder.
6. Should the bidder fail to declare or supply SANRAL with credible information in the prescribed form, the bid may be rendered invalid.
7. Should the SANRAL, in the process of conducting verification and investigation of information supplied by the bidder find out that the information poses a reputational risk, the bid shall be rendered invalid.
8. The following definitions shall apply:
  - 8.1. "Board" means the Board of Directors or the Accounting Authority of SANRAL
  - 8.2. "Business relationship" means the connection formed between SANRAL and external stakeholders for commercial purposes.
  - 8.3. "DD" means Due Diligence which is defined for this form as:
    - a) the verification of disclosures in the disclosure form, including if the disclosure is "none"; and
    - b) further investigation if any areas of risk are identified from publicly available information.
  - 8.4. "Domestic Prominent Influential Person" means an individual who holds an influential position, including in an acting position for a period exceeding six months, or has held at any time in the preceding twelve months, in the Republic, as defined in the Financial Intelligence Centre Amendment Act (No.1 of 2017).
  - 8.5. "DPIP" means a Domestic Prominent Influential Person.
  - 8.6. "Family members and known close associates" means immediate family members and known close associates of a person in a foreign or domestic prominent position, as the case may be, as defined in the Financial Intelligence Amendment Act, No.1 of 2017).
  - 8.7. "Foreign Influential National" means an individual who is not a South African citizen or does not have a permanent residence permit issued in terms of the Immigration Act (No.13 of 2002), who possesses personal power that induces another person to give consideration or to act on any basis other than the merits of the matter.

- 8.8. “Foreign Prominent Public Official” means (as defined in the Financial Intelligence Centre Amendment Act (No.1 of 2017) an individual who holds, or has held at any time in the preceding twelve months, in any foreign country a prominent public function
- 8.9. “FPPO” means a Foreign Prominent Public Official.
- 8.10. “Improper influence” means personal power that induces another person to give consideration or to act on any basis other than the merits of the matter.
- 8.11. “PIP” means Prominent Influential Person and includes DPIP, FPPO and FIN
- 8.12. “SANRAL” means the South African National Roads Agency SOC Limited, with registration number 1998/009584/30.
- 8.13. “Senior Management” means the Executive Committee or its individual members.
9. A separate declaration is required from each PIP. In the event that the tenderer is a Joint Venture, a separate declaration from each PIP from each of the Joint Venture members, is required.

**Prominent Influential Persons (PIP’s) Reporting Form**

| IDENTIFICATION PARTICULARS  |                    |         |  |                              |            |
|---|--------------------|---------|--|------------------------------|------------|
| Primary Particulars   | First Name         | Surname |  | ID/Passport Number           |            |
|   |                    |         |  |                              |            |
| Country Details   | Country of Origin  |         | Citizenship  | Current Country of Residence |            |
|   |                    |         |  |                              |            |
| CURRENT STATUS AND BACKGROUND   |                    |         |  |                              |            |
| Current Occupation  | Occupational Title |         |  | Status                       |            |
|   |                    |         |  | Active                       | Non-active |
|   |                    |         |  |                              |            |
|   |                    |         |  |                              |            |
| Is the potential/business partner (mark with an “X” whichever is applicable): |                    |         |  |                              |            |
| a DPIP  | a FPPO             | a FIN   | Family member or Close Associate of a DPIP/FPPO/FIN? |                              |            |
| KNOWN BUSINESS INTERESTS  |                    |         |  |                              |            |
| No  | Name of Entity     |         | Role in Entity                                       | Status                       |            |
| 1   |                    |         |  | Active                       | Non-active |
| 2   |                    |         |  |                              |            |
| 3   |                    |         |  |                              |            |
| 4   |                    |         |  |                              |            |
| 5   |                    |         |  |                              |            |
| 6   |                    |         |  |                              |            |
| 7   |                    |         |  |                              |            |
| 8   |                    |         |  |                              |            |
| 9   |                    |         |  |                              |            |
| 10  |                    |         |  |                              |            |

| <b>MEDIA REPORTS / OTHER SOURCES OF INFORMATION</b>  |  |
|--|--|
| (Please reference all known negative or damaging media reports associated with the<br>DPIP/FPPO/FIN) |  |
|  |  |
|  |  |
|  |  |
|  |  |
|  |  |
|  |  |
|  |  |

**Reporting Person/s:**

|                                 |       |  |
|---------------------------------|-------|--|
| Full names:                     |       |  |
| Designation:                    |       |  |
| Department:                     |       |  |
| Head of Department:             |       |  |
| Head of Department's signature: | Date: |  |
| Reporting Person's signature:   | Date: |  |

**DECLARATION / UNDERTAKING BY THE TENDERER**

I, the undersigned ..... declare that:

- i) the information furnished on this declaration form is true and correct, and
- ii) I accept that any action may be taken against me should this declaration prove to be false.

SIGNATURE: .....

NAME: .....

POSITION: .....

DATE: .....

NAME OF TENDERER: .....

**FORM A2.6: CERTIFICATE OF PERMISSION TO CONDUCT DUE DILIGENCE INVESTIGATION**

CONTRACT SANRAL R.072-020-2018/2  
FOR THE IMPROVEMENT WITHIN ALEXANDRIA ON NATIONAL ROUTE R72 SECTION 1 KM 48.70  
TO KM 49.85 AND SECTION 2 KM 0.00 TO KM 2.76

**Notes to tenderer:**

- 1. The tenderer shall complete the declaration below.**
- 2. In the case of a Joint Venture (JV), each member of the JV shall comply with the above requirements.**

**DECLARATION**

I, ..... (name)  
the undersigned in my capacity as ..... (position)  
on behalf of ..... (name of company),  
herewith grant consent that SANRAL or any of their appointed Service Providers may conduct a due  
diligence investigation on ..... (name of company)  
to evaluate our ability to perform the contract as stipulated in the Standard Conditions of Tender, Clause  
C.3.13(b).

In addition, any information in this regard requested by SANRAL or any of their appointed Service  
Providers, shall be submitted within the timelines of the request.

SIGNATURE: .....

DATE: .....

NAME: .....

POSITION: .....



Notes to tenderer:

**1. Definitions:**

1.1. "State" means:

- i) any National or Provincial Department, National or Provincial Public Entity or Constitutional Institution within the meaning of the Public Finance Management Act, 1999 (Act No 1 of 1999);
- ii) any Municipality of Municipal Entity;
- iii) Provincial Legislature;
- iv) National Assembly or the National Council of Provinces; or
- v) Parliament.
- vi) "Shareholder" means a person who owns shares in the company and is actively involved in the management of the enterprise or business and exercises control over the enterprise.

1.2. "Shareholder" means a person who owns shares in the company and is actively involved in the management of the enterprise or business and exercises control over the enterprise.

- 2. In the case of a joint venture (JV), a separate declaration form is to be completed and submitted by each JV member.
- 3. If the Form is omitted or blank; or if the tenderer found to have failed to declare conflict or declare false information, The tender will be declared non-responsive and should it be discovered after the award of a contract, contract maybe terminated and tenderer will be ultimately blacklisted.

**PURPOSE OF THE FORM**

Any person (natural or juristic) may make an offer or offers in terms of this invitation to bid. In line with the principles of transparency, accountability, impartiality, and ethics as enshrined in the Constitution of the Republic of South Africa and further expressed in various pieces of legislation, it is required for the bidder to make this declaration in respect of the details required hereunder.

Where a person/s are listed in the Register for Tender Defaulters and / or the List of Restricted Suppliers, that person will automatically be disqualified from the bid process.

**BIDDER'S DECLARATION**

Is the bidder, or any of its directors / trustees / shareholders / members / partners or any person having a controlling interest<sup>1</sup> in the enterprise, employed by the state?

**YES/NO**

If so, furnish particulars of the names, individual identity numbers, and, if applicable, state employee numbers of sole proprietor/ directors / trustees / shareholders / members/ partners or any person having a controlling interest in the enterprise, in table below.

| Full Name | Identity Number | Name of State institution |
|-----------|-----------------|---------------------------|
|           |                 |                           |
|           |                 |                           |
|           |                 |                           |
|           |                 |                           |
|           |                 |                           |
|           |                 |                           |
|           |                 |                           |
|           |                 |                           |
|           |                 |                           |
|           |                 |                           |

<sup>1</sup> the power, by one person or a group of persons holding the majority of the equity of an enterprise, alternatively, the person/s having the deciding vote or power to influence or to direct the course and decisions of the enterprise.

Do you, or any person connected with the bidder, have a relationship with any person who is employed by the procuring institution?

YES/NO

If so, furnish particulars:

.....  
.....

Does the bidder or any of its directors / trustees / shareholders / members / partners or any person having a controlling interest in the enterprise have any interest in any other related enterprise whether or not they are bidding for this contract?

YES/NO

If so, furnish particulars:

.....  
.....

**DECLARATION**

I, the undersigned, (name)..... in submitting the accompanying bid, do hereby make the following statements that I certify to be true and complete in every respect:

I have read and I understand the contents of this disclosure;  
I understand that the accompanying bid will be disqualified if this disclosure is found not to be true and complete in every respect;

The bidder has arrived at the accompanying bid independently from, and without consultation, communication, agreement or arrangement with any competitor. However, communication between partners in a joint venture or consortium<sup>2</sup> will not be construed as collusive bidding.

In addition, there have been no consultations, communications, agreements or arrangements with any competitor regarding the quality, quantity, specifications, prices, including methods, factors or formulas used to calculate prices, market allocation, the intention or decision to submit or not to submit the bid, bidding with the intention not to win the bid and conditions or delivery particulars of the products or services to which this bid invitation relates.

The terms of the accompanying bid have not been, and will not be, disclosed by the bidder, directly or indirectly, to any competitor, prior to the date and time of the official bid opening or of the awarding of the contract.

There have been no consultations, communications, agreements or arrangements made by the bidder with any official of the procuring institution in relation to this procurement process prior to and during the bidding process except to provide clarification on the bid submitted where so required by the institution; and the bidder was not involved in the drafting of the specifications or terms of reference for this bid.

I am aware that, in addition and without prejudice to any other remedy provided to combat any restrictive practices related to bids and contracts, bids that are suspicious will be reported to the Competition Commission for investigation and possible imposition of administrative penalties in terms of section 59 of the Competition Act No 89 of 1998 and or may be reported to the National Prosecuting Authority (NPA) for criminal investigation and or may be restricted from conducting business with the public sector for a period not exceeding ten (10) years in terms of the Prevention and Combating of Corrupt Activities Act No 12 of 2004 or any other applicable legislation.

**I CERTIFY THAT THE INFORMATION FURNISHED IN PARAGRAPHS 1, 2 and 3 ABOVE IS CORRECT.**

**I ACCEPT THAT THE STATE MAY REJECT THE BID OR ACT AGAINST ME IN TERMS OF PARAGRAPH 6 OF PFMA SCM INSTRUCTION 03 OF 2021/22 ON PREVENTING AND COMBATING ABUSE IN THE SUPPLY CHAIN MANAGEMENT SYSTEM SHOULD THIS DECLARATION PROVE TO BE FALSE.**

<sup>2</sup> Joint venture or Consortium means an association of persons for the purpose of combining their expertise, property, capital, efforts, skill and knowledge in an activity for the execution of a contract.

.....

Signature

Date

.....

Position

Name of bidder

**FORM A3.2: CERTIFICATE OF INDEPENDENT TENDER (INCORPORATING SBD9) – NOT APPLICABLE**

CONTRACT SANRAL R.072-020-2018/2  
FOR THE IMPROVEMENT WITHIN ALEXANDRIA ON NATIONAL ROUTE R72 SECTION 1 KM 48.70  
TO KM 49.85 AND SECTION 2 KM 0.00 TO KM 2.76

**Notes to tenderer:**

1. **This certificate conforms to Treasury Regulation 16A9 and the requirement of section 4(1)(b)(iii) of the Competition Act No. 89 of 1998, as amended, that prohibits an agreement between, or concerted practice by, firms, or a decision by an association of firms, if it is between parties in a horizontal relationship and if it involves collusive tendering.**
2. **Collusive tendering is a conspiracy between businesses that would normally be expected to compete, to agree not to compete, in a tender process.**
3. **This certificate serves as a declaration by the tenderer that the tender submitted is free from any collusion with a competitor.**
4. **In the case of a joint venture (JV), a separate certificate is to be completed and submitted by each JV member.**
5. **If the tenderer is found to have failed to declare conflict of interest or have declared false information, the tender will be declared non-responsive and should it be discovered after contract award, will be ultimately blacklisted.**

Declaration

I, the undersigned, in submitting the accompanying tender on behalf of the tenderer do hereby make the following statements that I certify to be true and complete in every respect:

1. I have read and understand the notes to, and the contents of, this Certificate;
2. I understand that the accompanying tender will be disqualified if this Certificate is found to be not true and complete in every respect;
3. I am authorised by the tenderer to sign this Certificate, and to submit the accompanying tender, on behalf of the tenderer;
4. Each person whose signature appears on the accompanying tender has been authorised by the tenderer to determine the terms of, and to sign the tender, on behalf of the tenderer;
5. For the purposes of this Certificate and the accompanying tender, I understand that the word "competitor" shall include any individual or organisation, other than the tenderer, whether or not affiliated with the tenderer, who:
  - a) has been requested to submit a tender in response to this tender invitation;
  - b) could potentially submit a tender in response to this tender invitation, based on their qualifications, abilities or experience; and
  - c) provides the same goods and services as the tenderer and/or is in the same line of business as the tenderer.
6. The tenderer has arrived at the accompanying tender independently from, and without consultation, communication, agreement or arrangement with any competitor. However, communication between partners in a joint venture or consortium will not be construed as collusive tendering.
7. In particular, without limiting the generality of statement 6 above, there has been no consultation, communication, agreement or arrangement with any competitor regarding:
  - a) prices;
  - b) geographical area where product or service will be rendered (market allocation);

- c) methods, factors or formulas used to calculate prices;
  - d) the intention or decision to submit, or not to submit, a tender;
  - e) the submission of a tender which does not meet the specifications and conditions of the tender; or
  - f) tendering with the intention not to win the tender.
8. In addition, there have been no consultations, communications, agreements or arrangements with any competitor regarding the quality, quantity, specifications and conditions or delivery particulars of the products or services to which this tender relates.
9. The terms of the accompanying tender have not been, and will not be, disclosed by the tenderer, directly or indirectly, to any competitor, prior to the date and time of the official tender opening or of the awarding of the contract.
10. I am aware that, in addition and without prejudice to any other remedy provided to combat any restrictive practices related to tenders and contracts, tenders that are suspicious will be reported to the Competitions Commission for investigation and possible imposition of administrative penalties in terms of section 59 of the Competition Act No. 89 of 1998 and/or may be reported to the National Prosecuting Authority for criminal investigation and/or may be restricted from conducting business with the public sector for a period not exceeding ten (10) years in terms of the Prevention and Combating of Corrupt Activities Act No. 12 of 2004 or any other applicable legislation.

SIGNATURE: .....

DATE: .....

NAME: .....

POSITION: .....

**FORM A3.3: DECLARATION OF TENDERER'S PAST SUPPLY CHAIN MANAGEMENT PRACTICES**

CONTRACT SANRAL R.072-020-2018/2  
FOR THE IMPROVEMENT WITHIN ALEXANDRIA ON NATIONAL ROUTE R72 SECTION 1 KM 48.70 TO KM 49.85 AND SECTION 2 KM 0.00 TO KM 2.76

**Notes to tenderer:**

1. **This declaration:**
  - a) **must form part of all tenders submitted.**
  - b) **in the case of a joint venture (JV), must be completed and submitted by each member of the JV.**
2. **This form serves as a declaration to be used by institutions in ensuring that when goods and services are being procured, all reasonable steps are taken to combat the abuse and/or misused the State's procurement of the supply chain management system.**
3. **The tender of any tenderer may be disregarded if that tenderer or any of its directors have:**
  - (a) **abused and/or misused the State's procurement and/or supply chain management system;**
  - (b) **committed fraud, corruption or any other improper conduct in relation to such State system and/or;**
  - (c) **has been charged with fraud, corruption or any other improper conduct whether of a criminal or civil nature during the course and scope of rendering services to the state or any other party and/or entity; or**
  - (d) **failed to perform on any previous contract with the State.**
4. **In order to give effect to the above, the following questionnaire must be completed and submitted with this tender.**

|       |  |                                 |                                |
|-------|--|---------------------------------|--------------------------------|
| 4.1   | <p>Is the tenderer or any of its directors listed on the National Treasury's Database of Restricted Suppliers as companies or persons prohibited from doing business with the public sector?</p> <p><b>Companies or persons who are listed on this Database were informed in writing of this restriction by the Accounting Officer/ Authority of the institution that imposed the restriction after the <i>audi alteram partem</i> rule was applied.</b></p> <p>The Database of Restricted Suppliers now resides on the National Treasury website (<a href="http://www.treasury.gov.za">www.treasury.gov.za</a>) and can be accessed by clicking on its link at the bottom of the home page.</p> | Yes<br><input type="checkbox"/> | No<br><input type="checkbox"/> |
| 4.1.1 | If Yes, furnish particulars:   |                                 |                                |
| 4.2   | <p>Is the tenderer or any of its directors listed on the Register for Tender Defaulters in terms of Section 29 of the Prevention and Combating of Corrupt Activities Act (No. 12 of 2004)?</p> <p><b>The Register for Tender Defaulters can be accessed on the National Treasury website (<a href="http://www.treasury.gov.za">www.treasury.gov.za</a>) by clicking on its link at the bottom of the home page.</b></p>  | Yes<br><input type="checkbox"/> | No<br><input type="checkbox"/> |
| 4.2.1 | If Yes, furnish particulars:   |                                 |                                |

|       |   |                                 |                                |
|-------|---|---------------------------------|--------------------------------|
| 4.3   | Was the tenderer or any of its directors convicted by a court of law (including a court outside the Republic of South Africa) for fraud or corruption during the past five years? | Yes<br><input type="checkbox"/> | No<br><input type="checkbox"/> |
| 4.3.1 | If Yes, furnish particulars:  |                                 |                                |
| 4.4   | Was any contract between the tenderer and any organ of State terminated during the past five years on account of failure to perform on or comply with the contract?               | Yes<br><input type="checkbox"/> | No<br><input type="checkbox"/> |
| 4.4.1 | If Yes, furnish particulars:  |                                 |                                |

**CERTIFICATION**

I, the undersigned, .....  
certify that the information furnished on this declaration form is true and correct.

I accept that, in addition to cancellation of a contract, action may be taken against me should this declaration prove to be false.

SIGNATURE: .....

NAME: .....

POSITION: .....

DATE: .....

NAME OF TENDERER: .....

**FORM A3.4: REGISTRATION ON NATIONAL TREASURY CENTRAL SUPPLIER DATABASE**

CONTRACT SANRAL R.072-020-2018/2  
FOR THE IMPROVEMENT WITHIN ALEXANDRIA ON NATIONAL ROUTE R72 SECTION 1 KM 48.70  
TO KM 49.85 AND SECTION 2 KM 0.00 TO KM 2.76

The tenderer shall provide a scanned copy in .pdf of the Active Supplier Listing on the National Treasury Central Supplier Database ([www.treasury.gov.za](http://www.treasury.gov.za)). In the case of a Joint Venture (JV), the tenderer shall provide scanned copies in .pdf of the Active Supplier Listing on the National Treasury Central Supplier Database for each member of the Joint Venture.

Name of Contractor: .....

Central Supplier Database Supplier Number: .....

Supplier Commodity: .....

Delivery Location: .....

SIGNED BY TENDERER: .....



**FORM A3.5: DECLARATION CERTIFICATE FOR LOCAL PRODUCTION AND CONTENT FOR DESIGNATED SECTORS (SBD 6.2)**

CONTRACT SANRAL R.072-020-2018/2  
FOR THE IMPROVEMENT WITHIN ALEXANDRIA ON NATIONAL ROUTE R72 SECTION 1 KM 48.70 TO KM 49.85 AND SECTION 2 KM 0.00 TO KM 2.76

This Standard Bidding Document (SBD) must form part of all bids invited. It contains general information and serves as a declaration form for local content (local production and local content are used interchangeably).

Before completing this declaration, bidders must study the General Conditions, Definitions, Directives applicable in respect of Local Content as prescribed in the South African Bureau of Standards (SABS) approved technical specification number SANS 1286:2017 and the Guidance on the Calculation of Local Content together with the Local Content Declaration Templates [Annex C (Local Content Declaration: Summary Schedule), D (Imported Content Declaration: Supporting Schedule to Annex C) and E (Local Content Declaration: Supporting Schedule to Annex C)].

**1. General Conditions**

- 1.1. The local content (LC) expressed as a percentage of the bid price must be calculated in accordance with the SABS approved technical specification number SANS 1286:2017 as follows:

$$LC = [1 - x / y] * 100$$

Where:

- x is the imported content in Rand  
y is the bid price in Rand excluding value added tax (VAT)

Prices referred to in the determination of x must be converted to Rand (ZAR) by using the exchange rate published by South African Reserve Bank (SARB) on the date of advertisement of the bid as indicated in paragraph 3.1 below.

**The SABS approved technical specification number SANS 1286:2017 is accessible on [http://www.thedti.gov.za/industrial development/ip.jsp](http://www.thedti.gov.za/industrial%20development/ip.jsp) at no cost.**

- 1.6 A bid may be disqualified if this Declaration Certificate and the Annex C (Local Content Declaration: Summary Schedule – Form A3.6) are not submitted as part of the bid documentation.

**2. The stipulated minimum threshold(s) for local production and content (refer to Annex A of SANS 1286:2017) for this bid is/are as follows:**

| <b><u>Steel Construction Materials</u></b>              | <b><u>Components</u></b>  | <b><u>Stipulated minimum threshold</u></b> |
|---|---|--|
| <b>Steel value-added construction material products</b> |   |  |
| Fabricated Structural Steel                             | Latticed steelwork, reinforcement steel, columns, beams, plate girders, rafters, bracing, cladding supports, stair stringers & treads, ladders, steel flooring, floor grating, handrailing and balustrading, scaffolding, ducting, gutters, launders, downpipes and trusses | <b>100%</b>                                |
| Joining/Connecting Components                           | Gussets, cleats, stiffeners, splices, cranks, kinks, doglegs, spacers, tabs and brackets  | <b>100%</b>                                |
| Fasteners   | Bolts, nuts, rivets and nails   | <b>100%</b>                                |

|  |  |  |
|--|--|--|
| Wire Products  | All fencing products, all barbed wire and mesh fencing, fabric/mesh reinforcing, gabions, wire rope/strand and chains, welding electrodes, nails/tacks, springs and screws | 100%                                       |
| Ducting and Structural Pipework  | Non-conveyance tubing fabricated from steel sheeting and plate with structural supports  | 100%                                       |
| <p>Only locally produced or locally manufactured steel products and components for construction with a minimum threshold for local content and production as stipulated above will be considered.</p> <p>In the designation, imported inputs raw materials (i.e. zinc and additives in the surface preparation and protection process (cleaning and coating/galvanising)) used in the production of steel products and components for the construction are deemed as locally manufactured input materials.</p> <p>The imported input raw material, as specified above, used in the manufacture and production of steel products and components for construction will be deemed to have been sourced locally for the purposes of calculating local content.</p> |  |  |
| <b><u>Steel Construction Materials</u></b>   |  | <b><u>Stipulated minimum threshold</u></b> |
| <b>Primary steel construction material products</b>  |  |  |
| Plates (>4.5mm thick and supplied in flat pieces)  |  | 100%                                       |
| Sheets (<4.5mm thick and supplied in coils)  |  | 100%                                       |
| Galvanised and Colour Coated coils   |  | 100%                                       |
| Wire Rod and Drawn Wire  |  | 100%                                       |
| Sections (Channels, Angles, I-Beams and H-Beams)   |  | 100%                                       |
| Reinforcing bars   |  | 100%                                       |
| <p>Only locally produced or locally manufactured steel products and components for construction with a minimum threshold for local content and production as stipulated above will be considered.</p> <p>In the designation, imported inputs raw materials (i.e. zinc and additives in the surface preparation and protection process (cleaning and coating/galvanising)) used in the production of steel products and components for the construction are deemed as locally manufactured input materials.</p> <p>The imported input raw material, as specified above, used in the manufacture and production of steel products and components for construction will be deemed to have been sourced locally for the purposes of calculating local content.</p> |  |  |
| <b><u>Cable products</u></b>   |  | <b><u>Stipulated minimum threshold</u></b> |
| <b>Electrical cable material products</b>  |  |  |
| Low Voltage  |  | 90%  |
| Low Cost Reticulation  |  | 90%  |
| Medium & High Voltage  |  | 90%  |
| ACR  |  | 90%  |
| <p>Only locally produced or locally manufactured electrical and telecommunication cables for construction with a minimum threshold for local content and production as stipulated above will be considered.</p> <p>Excluded in the designation are mainly primary steel, copper, aluminium, polyvinyl chloride (PVC), cross-linked polyethylene (XLPE), aramid yarn, and optical fibre used for fabrication of cable products. This is to encourage local manufacturers to seek the best global competitive prices for primary materials hence the competitive imported materials used in the manufacture</p>  |  |  |

|   |   |   |                                     |
|---|---|---|-------------------------------------|
| of cables will be deemed to have been sourced locally for the purposes of calculating local content.  |   |   |                                     |
| <b>Product type</b>   |   |   | <b>Stipulated minimum threshold</b> |
| <b>Plastic Pipes</b>  |   |   |                                     |
| Polyvinyl chloride (PVC) pipes  |   |   | <b>100%</b>                         |
| High density polyethylene (HDPE) pipes  |   |   | <b>100%</b>                         |
| Only locally produced or locally manufactured Plastic Pipes with a minimum threshold for local content and production as stipulated above will be considered.   |   |   |                                     |
| <b>Textiles, Clothing, Leather and Footwear</b>   |   |   |                                     |
| Textiles  |   |   | <b>100%</b>                         |
| Only locally produced or locally manufactured Textiles, Clothing, Leather and Footwear from local raw material or input, with a minimum threshold for local production and content of 100% will be considered.              |   |   |                                     |
| <b>Bagged and bulk cement</b>   |   |   |                                     |
| <b>Cement Type</b>  | <b>Description</b>  | <b>Application</b>  | <b>Stipulated Minimum Threshold</b> |
| Cem I   | Pure portland cement with a 95-100% clinker.  | All civil and building construction as appropriate          | 100 %                               |
| Cem II  | Portland cement containing varying additions of secondary materials, i.e. fly ash, pozzolana, slag, silica fume, or limestone | All civil and building construction as appropriate          | 100 %                               |
| Masonry cement  | Mixture of Portland cement and plasticizing materials such as limestone to improve setting time                               | use in mortar, brick, block, and stone masonry construction | 100 %                               |
| Only locally produced or locally manufactured bagged and bulk cement produced using locally produced raw materials with the minimum threshold percentages for local production and content stated below will be considered: |   |   |                                     |

Copies of Annex D, Annex E, Process for application for exemption, as well as guidelines for the calculation of the local content, is provided in Appendix 7 of Part C4.

**3. Does any portion of the services or goods offered have any imported content?**

|            |  |           |  |
|------------|--|-----------|--|
| <b>YES</b> |  | <b>NO</b> |  |
|------------|--|-----------|--|

**Tick applicable box**

3.1 If yes, the rate(s) of exchange to be used in this bid to calculate the local content as prescribed in paragraph 1.5 of the general conditions must be the rate(s) published by SARB for the specific currency on the date of advertisement of the bid 8 March 2024.

The relevant rate of exchange information is accessible on <https://www.resbank.co.za>.

Indicate the rate(s) of exchange against the appropriate currency in the table overleaf (refer to Annex A of SANS 1286:2017):

| <b>Currency</b> | <b>Rates of exchange</b> |
|-----------------|--------------------------|
| US Dollar       |                          |
| Pound Sterling  |                          |
| Euro            |                          |
| Yen             |                          |
| Other           |                          |

NB: Bidders must submit proof of the SARB rate(s) of exchange used.

4. Where, after the award of a bid, challenges are experienced in meeting the stipulated minimum threshold for local content the DTI must be informed accordingly in order for the DTI to verify and in consultation with the AO/AA provide directives in this regard.

**LOCAL CONTENT DECLARATION**  
**(REFER TO ANNEX B OF SATS 1286:2011)**

**LOCAL CONTENT DECLARATION BY CHIEF FINANCIAL OFFICER OR OTHER LEGALLY RESPONSIBLE PERSON NOMINATED IN WRITING BY THE CHIEF EXECUTIVE OR SENIOR MEMBER/PERSON WITH MANAGEMENT RESPONSIBILITY (CLOSE CORPORATION, PARTNERSHIP OR INDIVIDUAL)**

IN RESPECT OF BID NO. R.072-020-2018/2

ISSUED BY: THE SOUTH AFRICAN NATIONAL ROADS AGENCY SOC LIMITED (the Procurement Authority / Institution):

N.B.:

1. The obligation to complete, duly sign and submit this declaration cannot be transferred to an external authorized representative, auditor or any other third party acting on behalf of the bidder.
2. Guidance on the Calculation of Local Content together with Local Content Declaration Templates (Annex C, D and E) is accessible on <http://www.thedtic.gov.za/sectors-and-services-2/industrial-development/industrial-procurement/?hilite=%27local%27%2C%27content%27%2C%27declaration%27>. Examples of Annex D and E as well as the Process for application for exemption and guidelines for the calculation of the local content is provided in Part C4: Appendix 7. Examples of Annex D and E is also provided in Excel format on the Tender document link. Bidders should first complete Declaration D. After completing Declaration D, bidders should complete Declaration E and then consolidate the information on Declaration C. **Declaration C should be submitted with the bid documentation at the closing date and time of the bid in order to substantiate the declaration made in paragraph (c) below.** Declarations D and E should be kept by the bidders for verification purposes for a period of at least 5 years. The successful bidder is required to continuously update Declarations C, D and E with the actual values for the duration of the contract.

I, the undersigned ..... (full names),  
do hereby declare, in my capacity as .....  
of ..... (name of bidder entity)  
the following:

- (a) The facts contained herein are within my own personal knowledge.
- (b) I have satisfied myself that the goods/services/works to be delivered in terms of the above-specified bid comply with the minimum local content requirements as specified in the bid, and as measured in terms of SANS 1286:2017; and
- (c) The local content percentage (%) indicated below has been calculated using the formula given in clause 3 of SANS 1286:2017, the rates of exchange indicated in paragraph 3.1 above and the information contained in Declarations D and E which has been consolidated in Declaration C:

|  |        |
|--|--------|
| Bid price, excluding VAT (y)                                       | R      |
| Imported content (x), as calculated in terms of SATS 1286:2011     | R      |
| Stipulated minimum threshold for local content (paragraph 2 above) | .....% |
| Local content %, as calculated in terms of SATS 1286:2011          | .....% |

**If the bid is for more than one product, the local content percentages for each product contained in Declaration C shall be used instead of the table above.**

**The local content percentage for each product has been calculated using the formula given in clause 3 of SANS 1286:2017, the rates of exchange indicated in paragraph 3.1 above and the information contained in Declarations D and E.**

d) I accept that the Procurement Authority / Institution has the right to request that the local content be verified in terms of the requirements of SANS 1286:2017.

**SIGNATURE:** .....

**DATE:** .....

**WITNESS No. 1:** .....

**WITNESS No. 2:** .....

**FORM A3.6: LOCAL CONTENT DECLARATION: SUMMARY SCHEDULE (ANNEXURE C)**

CONTRACT SANRAL R.072-020-2018/2

FOR THE IMPROVEMENT WITHIN ALEXANDRIA ON NATIONAL ROUTE R72 SECTION 1 KM 48.70 TO KM 49.85 AND SECTION 2 KM 0.00 TO KM 2.76

|    |                        |      |   |    |   |     |   |                   |  |  |  |  |
|----|------------------------|------|---|----|---|-----|---|-------------------|--|--|--|--|
| C1 | Tender No.:            |      |   |    |   |     |   |                   |  |  |  | Note: VAT to be excluded from all calculations |
| C2 | Tender Description:    |      |   |    |   |     |   |                   |  |  |  |  |
| C3 | Designated Product(s): |      |   |    |   |     |   |                   |  |  |  |  |
| C4 | Tender Authority:      |      |   |    |   |     |   |                   |  |  |  |  |
| C5 | Tendering Entity Name: |      |   |    |   |     |   |                   |  |  |  |  |
| C6 | Tender Exchange Rate:  | Pula | P | EU | € | GBP | £ | OTHER (stipulate) |  |  |  |  |

| Tender Item No.'s  | List of Items   | Calculation of Local Content  |                         |   |                |             |                            | Tender Summary |                    |                                 |                        |
|--|-----------------|-------------------------------|-------------------------|---|----------------|-------------|----------------------------|----------------|--------------------|---------------------------------|------------------------|
|  |                 | Tender Price Each (Excl. VAT) | Exempted Imported Value | Tender Value Net of Exempted Imported Content | Imported Value | Local Value | Local Content % (Per Item) | Tender Qty     | Total Tender Value | Total Exempted Imported Content | Total Imported Content |
| (C8)   | (C9)            | (C10)                         | (C11)                   | (C12)   | (C13)          | (C14)       | (C15)                      | (C16)          | (C17)              | (C18)                           | (C19)                  |
| C1.2.5 Safety: C1.2.5.2 Implementation of health and safety plan C1.5.7 Temporary traffic control facilities: C1.5.7.3 Flagmen | Textiles in PPE |                               |                         |   |                |             |                            |                |                    |                                 |                        |
| C3.1.9 Pipes in subsoil  | PVC pipes       |                               |                         |   |                |             |                            |                |                    |                                 |                        |

|   |                     |  |  |  |  |  |  |  |  |  |  |  |
|---|---------------------|--|--|--|--|--|--|--|--|--|--|--|
| drainage systems  |                     |  |  |  |  |  |  |  |  |  |  |  |
| C3.2.7.6<br>Culvert inlets and outlets                          | Cement (CEM II)     |  |  |  |  |  |  |  |  |  |  |  |
| C3.3.7.2 Cast-in-situ concrete chutes                           | Cement (CEM II)     |  |  |  |  |  |  |  |  |  |  |  |
| C3.2.16<br>Brickwork  | Masonry<br>Cement   |  |  |  |  |  |  |  |  |  |  |  |
| C3.3.8 Linings for open drains                                  | Cement (CEM II)     |  |  |  |  |  |  |  |  |  |  |  |
| C3.3.11<br>Concrete screed or backfill below chutes             | Cement (CEM II)     |  |  |  |  |  |  |  |  |  |  |  |
| C11.1.5<br>Concrete pitching or paving                          | Cement (CEM II)     |  |  |  |  |  |  |  |  |  |  |  |
| C11.1.6<br>Concrete edge beams                                  | Cement (CEM II)     |  |  |  |  |  |  |  |  |  |  |  |
| C5.4.5<br>Cementitious stabilisation agents for pavement layers | Cement (CEM II)     |  |  |  |  |  |  |  |  |  |  |  |
|   |                     |  |  |  |  |  |  |  |  |  |  |  |
|   |                     |  |  |  |  |  |  |  |  |  |  |  |
| C3.3.10<br>Reinforcement  | Steel reinforcement |  |  |  |  |  |  |  |  |  |  |  |
| C3.3.12<br>Reinforcement  | Steel reinforcement |  |  |  |  |  |  |  |  |  |  |  |



|   |  |  |  |  |  |  |  |  |  |  |  |  |
|---|--|--|--|--|--|--|--|--|--|--|--|--|
| C11.4.1 Erecting guardrails at 3.81m spacing  | Fasteners:<br>Bolts and nuts                                   |  |  |  |  |  |  |  |  |  |  |  |
| C11.2.3 PVC coated gabion boxes   | Wire products used in gabions                                  |  |  |  |  |  |  |  |  |  |  |  |
| C11.5.1 Supply and erect new fencing material for new fences and for supplementing material in existing fences which are being repaired or remove:  | Wire products used in fencing, nuts and bolts where applicable |  |  |  |  |  |  |  |  |  |  |  |
| C11.6.1 Road signboards with painted or coloured semi-matt background. Symbols, lettering and borders in semimat black or in Class I retro-reflective material, where the sign board is constructed from:<br>C11.6.1.3,<br>C11.6.1.7, | Fixing brackets, supporting framework, nuts and bolts          |  |  |  |  |  |  |  |  |  |  |  |

|   |  |  |  |  |  |  |  |  |  |  |  |  |
|---|--|--|--|--|--|--|--|--|--|--|--|--|
| C11.6.1.9,<br>C11.6.1.11 and<br>C1.3.2<br>Contract sign<br>boards |  |  |  |  |  |  |  |  |  |  |  |  |
|   |  |  |  |  |  |  |  |  |  |  |  |  |

|   |      |  |
|---|------|--|
| (C20) Total Tender Value                                | R    |  |
| (C21) Total Exempt Imported Content                     | R    |  |
| (C22) Total Tender value net of exempt imported content | R    |  |
| (C23) Total Imported Content                            | R    |  |
| (C24) Total Local Content                               | R    |  |
| (C25) Average Local Content % of tender                 | ...% |  |

Signature of tenderer from Annex B (SATS 1286.2011)

\_\_\_\_\_  
Date: \_\_\_\_\_

**FORM A4: SCHEDULE OF DEVIATIONS OR QUALIFICATIONS BY TENDERER**

CONTRACT SANRAL R.072-020-2018/2  
FOR THE IMPROVEMENT WITHIN ALEXANDRIA ON NATIONAL ROUTE R72 SECTION 1 KM 48.70  
TO KM 49.85 AND SECTION 2 KM 0.00 TO KM 2.76

**Notes to tenderer:**

- 1. The Main Tender MUST be priced.**
- 2. When submitting any alternative tender, condition of clause C.2.12 of Tender Data, shall be followed.**

| Page | Description |
|------|-------------|
|      |             |

SIGNED BY TENDERER: .....

**FORM A5: SCHEDULE OF ADDENDA TO TENDER DOCUMENTS**

CONTRACT SANRAL R.072-020-2018/2  
FOR THE IMPROVEMENT WITHIN ALEXANDRIA ON NATIONAL ROUTE R72 SECTION 1 KM 48.70  
TO KM 49.85 AND SECTION 2 KM 0.00 TO KM 2.76

**Notes to tenderer:**

- 1. If an addendum containing material amendments is not incorporated by the tenderer in his tender offer, the tender will be declared non-responsive.**

| We confirm that the following communications received from the Employer before the submission of this tender offer, amending the tender documents, have been taken into account in this tender offer: |             |                         |
|---|-------------|-------------------------|
|   | <b>Date</b> | <b>Title or Details</b> |
| <b>1.</b>   |             |                         |
| <b>2.</b>   |             |                         |
| <b>3.</b>   |             |                         |
| <b>4.</b>   |             |                         |
| <b>5.</b>   |             |                         |
| <b>6.</b>   |             |                         |
| <b>7.</b>   |             |                         |
| <b>8.</b>   |             |                         |
| <b>9.</b>   |             |                         |
| <b>10.</b>  |             |                         |

SIGNED BY TENDERER: .....

**FORM A6: CERTIFICATE OF TAX COMPLIANCE (INCORPORATING SBD2)**

CONTRACT SANRAL R.072-020-2018/2  
FOR THE IMPROVEMENT WITHIN ALEXANDRIA ON NATIONAL ROUTE R72 SECTION 1 KM 48.70  
TO KM 49.85 AND SECTION 2 KM 0.00 TO KM 2.76

The tenderer shall complete the declaration below.

I, ..... (name)  
the undersigned in my capacity as ..... (position)  
on behalf of ..... (name of company)  
herewith grant consent that SARS may disclose to the South African National Roads Agency SOC  
Limited (SANRAL) our tax compliance status. For this purpose, our unique security personal  
identification number (PIN) is ..... our tax reference number is .....  
and our tax clearance certificate number is .....

In the event of a Joint Venture / Consurtium, each member shall comply with the above requirement.

SIGNED BY TENDERER: .....

**FORM A7: CERTIFICATE OF INSURANCE COVER**

CONTRACT SANRAL R.072-020-2018/2  
FOR THE IMPROVEMENT WITHIN ALEXANDRIA ON NATIONAL ROUTE R72 SECTION 1 KM 48.70  
TO KM 49.85 AND SECTION 2 KM 0.00 TO KM 2.76

**Note to tenderer:**  
**In the event of the tenderer being a Joint Venture/consortium the details of the individual members must also be provided.**

The tenderer shall provide the following details of this insurance cover:

- i) Name of Tenderer: .....
- ii) Period of Validity: .....
- iii) Value of Insurance:
  - Insurance for Works and Contractor’s Equipment  
Company: .....  
Value: .....
  - Insurance for Contractor’s Personnel  
Company: .....  
Value: .....
  - General public liability  
Company: .....  
Value: .....
  - SASRIA  
Company: .....  
Value: .....

SIGNED BY TENDERER: .....

**FORM A8: TENDERER'S REGISTERED FINANCIAL SERVICE PROVIDER LETTER AND BANK DETAILS**

CONTRACT SANRAL R.072-020-2018/2  
FOR THE IMPROVEMENT WITHIN ALEXANDRIA ON NATIONAL ROUTE R72 SECTION 1 KM 48.70 TO KM 49.85 AND SECTION 2 KM 0.00 TO KM 2.76

**Notes to tenderer:**

1. The tenderer shall attach to this form:
  - 1.1 a letter (dated less than 3 months prior to the tender closing date) from a registered Financial Service Provider (registered with the FSB) which provides banking details and declares how the entity conducts its account.
  - 1.2 a letter (dated less than 3 months prior to the tender closing date) from the tenderer's independent registered accountant confirming that the Tenderer has the financial means net of current commitments (independent of any contractual advance payment) to meet the construction workflow requirements estimated for the subject contract. The confirmation by an independent registered accountant must indicate that the review, to be conducted in terms of ISRS4400, was done in terms of the Section 30 and Regulation 29 of the Companies Act No. 71 of 2008; or
  - 1.3 a letter (dated less than 3 months prior to the tender closing date) from the tenderer's financial sponsorship confirming that the Tenderer has the financial means net of current commitments (independent of any contractual advance payment) to meet the construction workflow requirements estimated for the subject contract.
2. If the Tenderer does not have financial means, the tender may be declared non-responsive in terms of clause C.3.13(b) of the Tender Data.
3. The Tenderer (and in the event of a joint venture, the joint venture member's combined) shall have available capital in excess of R8,000,000.00.
4. In the event that the tenderer is a joint venture enterprise, details of all the members of the joint venture shall be similarly provided and attached to this form.

Option 1 - Letter to be on the tenderer's registered Financial Service Provider's letter head

**RE: ACCOUNT CONDUCT AND CASHFLOW CONFIRMATION**

To Whom It May Concern:

We hereby confirm that *Tenderer Name* has been banking with *xxxx* Bank for a period of *xxx* years and the account has been conducted in a satisfactory manner.

*Tenderer Name* has the financial means, net of current commitments, available to meet the construction cash flow requirements to the value of *Rxxxx* for contract R.072-020-2018/2.

- i) Name of Account Holder: .....
- ii) Account Number: .....
- iii) Bank name: .....
- iv) Branch Number: .....
- v) Bank and branch contact details .....

---

Option 2 - Letter to be on the tenderer's independent registered accountant letter head.

**RE: CASHFLOW CONFIRMATION (independent registered accountant)**

To Whom It May Concern:

The *(Insert Tenderer's Name)* has the financial means, net of current commitments, available to meet the construction cash flow requirements to the value of *R.....* for contract R.072-020-2018/2.

---



Option 3 - Letter to be on tenderer's financial sponsorship letter head

**RE: CASHFLOW CONFIRMATION (Financial sponsorship)**

To Whom It May Concern:

The *(Insert Tenderer's Name)* has the financial means, net of current commitments, available to meet the construction cash flow requirements to the value of R..... for contract R.072-020-2018/2 through a financial sponsorship from *(Insert Financial Sponsor's Name)*.

**FORM A9.1: SCHEDULE OF TENDERER'S LITIGATION HISTORY**

CONTRACT SANRAL R.072-020-2018/2  
FOR THE IMPROVEMENT WITHIN ALEXANDRIA ON NATIONAL ROUTE R72 SECTION 1 KM 48.70  
TO KM 49.85 AND SECTION 2 KM 0.00 TO KM 2.76

**Note to tenderer:**

The tenderer (and in the case of a Joint Venture, each member of the Joint Venture) shall list below details of any litigation with which the tenderer (including its directors, shareholders or other senior members in previous companies) has been involved with any organ of state or state department within the last ten years. The details must include the year, the litigating parties, the subject matter of the dispute, the value of any award or estimated award if the litigation is current and in whose favour the award, if any, was made.

| Employer | Other litigating party | Dispute | Award value | Date resolved |
|----------|------------------------|---------|-------------|---------------|
|          |                        |         |             |               |

SIGNED BY TENDERER: .....

**FORM A9.2: ENVIRONMENTAL, SOCIAL, HEALTH, AND SAFETY PERFORMANCE DECLARATION**

CONTRACT SANRAL R.072-020-2018/2  
 FOR THE IMPROVEMENT WITHIN ALEXANDRIA ON NATIONAL ROUTE R72 SECTION 1 KM 48.70  
 TO KM 49.85 AND SECTION 2 KM 0.00 TO KM 2.76

**Note to tenderer:**

The tenderer (and in the case of a Joint Venture, each member of the Joint Venture) shall indicate below by marking with an “X” if suspension or termination of a contract occurred or not, and/or if the performance security has been called or not, related to Environmental, Social, Health or Safety (ESHS) performance, in the past five (5) years prior to the tender submission date.

In the event that suspension or termination occurred and/or the performance security has been called, the tenderer shall complete the details of all the suspensions and terminations as well as the details of all performance securities called since the date indicated.

The Employer may use this information to seek further information or clarifications in carrying out its due diligence.

| <b>Environmental, Social, Health, and Safety Performance Declaration</b>   |   |   |                              |
|--|---|---|------------------------------|
| <input type="checkbox"/> <b>No suspension or termination of contract:</b> An employer has not suspended or terminated a contract and/or called the performance security for a contract for reasons related to Environmental, Social, Health, or Safety (ESHS) performance in the past five (5) years prior to the tender submission date.  |   |   |                              |
| <input type="checkbox"/> <b>Declaration of suspension or termination of contract:</b> The following contract(s) has/have been suspended or terminated and/or Performance Security called by an employer(s) for reasons related to Environmental, Social, Health, or Safety (ESHS) performance in the past five (5) years prior to the tender submission date. Details are described below: |   |   |                              |
| <b>Year</b>  | <b>Suspended or terminated portion of contract</b>  | <b>Contract Identification</b>  | <b>Total Contract Amount</b> |
| <i>[insert year]</i>   | <i>[insert amount and percentage]</i>   | <i>[insert complete contract name, contract number, Name of Employer, Address of Employer, Reason(s) for suspension or termination]</i> | <i>[insert amount]</i>       |
|  |   |   |                              |
|  |   |   |                              |
| <b>Performance Security called by an employer(s) for reasons related to ESHS performance</b>   |   |   |                              |
| <b>Year</b>  | <b>Contract Identification</b>  |   | <b>Total Contract Amount</b> |
| <i>[insert year]</i>   | <i>[insert complete contract name, contract number, Name of Employer, Address of Employer, Reason(s) for calling of performance security]</i> |   | <i>[insert amount]</i>       |
|  |   |   |                              |
|  |   |   |                              |
|  |   |   |                              |

SIGNED BY TENDERER: .....

**FORM A9.3: COMPLIANCE WITH LABOUR LEGISLATION DECLARATION**

CONTRACT SANRAL R.072-020-2018/2  
FOR THE IMPROVEMENT WITHIN ALEXANDRIA ON NATIONAL ROUTE R72 SECTION 1 KM 48.70  
TO KM 49.85 AND SECTION 2 KM 0.00 TO KM 2.76

**Note to tenderer:**

1. Tenderers must be registered with the Bargaining Council for the Civil Engineering Industry (BCCEI) or the relevant Bargaining Council.
2. Tenderers must append to this schedule (Form A9.3: Compliance with Labour Legislation) a letter of compliance / letter of good standing in terms of the relevant Government Gazette that indicates compliance/validity at the time of tender or obtain such upon being requested to do so in writing and within the period contained in such a request, failing which their tenders will be declared non-responsive.
3. Only those tenders submitted by tenderers who are in good standing with the BCCEI or any relevant applicable legislated bargaining council at the time of the tender award will be declared responsive.
4. Each party to a Consortium/Joint Venture shall append separate certificates for each party in the above regard.
5. The tenderer, by signing this schedule, declares that it will comply with all labour legislation, as may be applicable.

SIGNED BY TENDERER: .....



**FORM A11: CERTIFICATE OF COMPLIANCE WITH COMPENSATION FOR OCCUPATIONAL INJURIES AND DISEASES ACT, 1993 (ACT NO. 130 OF 1993)**

CONTRACT SANRAL R.072-020-2018/2  
FOR THE IMPROVEMENT WITHIN ALEXANDRIA ON NATIONAL ROUTE R72 SECTION 1 KM 48.70 TO KM 49.85 AND SECTION 2 KM 0.00 TO KM 2.76

**Notes to tenderer:**

- 1. Discovery that the tenderer has failed to make proper disclosure may result in SANRAL terminating a contract that flows from this tender on the ground that it has been rendered invalid by the tenderer's misrepresentation.**
- 2. The tenderer shall attach to this Form evidence that he is registered and in good standing with the compensation fund or with a licensed compensation insurer who is approved by Department of Labour in terms of section 80 of the Compensation for Injury and Disease Act, 1993 (Act No. 130 of 1993).**
- 3. The tenderer is required to disclose, by also attaching documentary evidence to this form, all inspections, investigations and their outcomes conducted by the Department of Labour into the conduct of the tenderer at any time during the 36 months preceding the date of this tender.**
- 4. In the event of a joint venture or consortium, each and every member of the unincorporated Joint Venture shall comply with the above requirements.**

SIGNED BY TENDERER: .....

**FORM A12: CERTIFICATE OF REGISTRATION WITH CIDB**

CONTRACT SANRAL R.072-020-2018/2  
FOR THE IMPROVEMENT WITHIN ALEXANDRIA ON NATIONAL ROUTE R72 SECTION 1 KM 48.70  
TO KM 49.85 AND SECTION 2 KM 0.00 TO KM 2.76

**Notes to tenderer:**

1. The tenderer shall provide a scanned copy in .pdf of the Active Contractor's Listing off the CIDB website. ([www.cidb.org.za](http://www.cidb.org.za)). Tenderers whose CIDB registration expires within 21 days after close of tender should attach proof of their application for re-registration (refer to Tender Data Clause C.2.1.1).
2. In the case of a Joint Venture, a scanned copy in .pdf of the Active Contractor's Listing must be provided for each member of the Joint Venture.
3. The tender will be declared non-responsive if:
  - The Tenderer is not registered on CIDB within the required contractor grading and category at the tender closing date, or
  - the Tenderer is suspended, or
  - the Tenderer has not declared interest of application to upgrade the grading, or
  - the Tenderer failed to submit the new registered grading within 21 days after tender closure.

Name of Contractor: .....

Contractor Grading Designation:.....

CIDB Contractor Registration Number: .....

Expiry Date: .....

SIGNED BY TENDERER: .....

**FORM A13: FORM SBD1 – INVITATION TO BID AND TERMS AND CONDITIONS FOR BIDDING**

**PART A**

**INVITATION TO BID**

|  |   |               |  |   |       |
|--|---|---------------|--|---|-------|
| <b>YOU ARE HEREBY INVITED TO BID FOR REQUIREMENTS OF THE SOUTH AFRICAN NATIONAL ROADS AGENCY SOC LIMITED</b>   |   |               |  |   |       |
| BID NUMBER:  | R.072-020-2018/2  | CLOSING DATE: | 19 April 2024  | CLOSING TIME:   | 11h00 |
| DESCRIPTION  | FOR THE IMPROVEMENT WITHIN ALEXANDRIA ON NATIONAL ROUTE R72 SECTION 1 KM 48.70 TO KM 49.85 AND SECTION 2 KM 0.00 TO KM 2.76 |               |  |   |       |
| <b>BID RESPONSE DOCUMENTS MAY BE DEPOSITED IN THE BID BOX SITUATED AT:</b>   |   |               |  |   |       |
| SANRAL SOUTHERN REGION<br>20 SHOREWARD DRIVE, BAY WEST, GQEBERHA, 6025   |   |               |  |   |       |
| <b>BIDDING PROCEDURE ENQUIRIES MAY BE DIRECTED TO:</b>   |   |               | <b>TECHNICAL ENQUIRIES MAY BE DIRECTED TO:</b>                                   |   |       |
| CONTACT PERSON   | Procurement Office  |               | CONTACT PERSON   | Procurement Office  |       |
| TELEPHONE NUMBER   | N/A   |               | TELEPHONE NUMBER   | N/A   |       |
| FACSIMILE NUMBER   | N/A   |               | FACSIMILE NUMBER   | N/A   |       |
| E-MAIL ADDRESS   | ProcurementSR6@s<br>anral.co.za   |               | E-MAIL ADDRESS   | ProcurementSR6@sa<br>nral.co.za   |       |
| <b>SUPPLIER INFORMATION</b>  |   |               |  |   |       |
| NAME OF BIDDER   |   |               |  |   |       |
| POSTAL ADDRESS   |   |               |  |   |       |
| STREET ADDRESS   |   |               |  |   |       |
| TELEPHONE NUMBER   | CODE  |               | NUMBER   |   |       |
| CELLPHONE NUMBER   |   |               |  |   |       |
| FACSIMILE NUMBER   | CODE  |               | NUMBER   |   |       |
| E-MAIL ADDRESS   |   |               |  |   |       |
| VAT REGISTRATION NUMBER  |   |               |  |   |       |
| SUPPLIER COMPLIANCE STATUS   | TAX COMPLIANCE SYSTEM PIN:  |               | OR   | CENTRAL SUPPLIER DATABASE No:   | MAAA  |
| 1.1.1.1 ARE YOU THE ACCREDITED REPRESENTATIVE IN SOUTH AFRICA FOR THE GOODS/SERVICES/ WORKS OFFERED?   | <input type="checkbox"/> Yes <input type="checkbox"/> No<br>[IF YES ENCLOSE PROOF]  |               | 1.1.1.2 ARE YOU A FOREIGN BASED SUPPLIER FOR THE GOODS/ SERVICES /WORKS OFFERED? | <input type="checkbox"/> Yes <input type="checkbox"/> No<br>[IF YES ANSWER THE QUESTIONNAIRE BELOW] |       |
| <b>QUESTIONNAIRE TO BIDDING FOREIGN SUPPLIERS</b>  |   |               |  |   |       |
| IS THE ENTITY A RESIDENT OF THE REPUBLIC OF SOUTH AFRICA (RSA)?  |   |               | <input type="checkbox"/> YES   | <input type="checkbox"/> NO   |       |
| DOES THE ENTITY HAVE A BRANCH IN THE RSA?  |   |               | <input type="checkbox"/> YES   | <input type="checkbox"/> NO   |       |
| DOES THE ENTITY HAVE A PERMANENT ESTABLISHMENT IN THE RSA?   |   |               | <input type="checkbox"/> YES   | <input type="checkbox"/> NO   |       |
| DOES THE ENTITY HAVE ANY SOURCE OF INCOME IN THE RSA?  |   |               | <input type="checkbox"/> YES   | <input type="checkbox"/> NO   |       |
| IS THE ENTITY LIABLE IN THE RSA FOR ANY FORM OF TAXATION   |   |               | <input type="checkbox"/> YES   | <input type="checkbox"/> NO   |       |
| <b>IF THE ANSWER IS “NO” TO ALL OF THE ABOVE, THEN IT IS NOT A REQUIREMENT TO REGISTER FOR A TAX COMPLIANCE STATUS SYSTEM PIN CODE FROM THE SOUTH AFRICAN REVENUE SERVICE (SARS) AND IF NOT, REGISTER AS PER 2.3 BELOW</b> |   |               |  |   |       |



**PART B: TERMS AND CONDITIONS FOR BIDDING**

|                                       |   |
|---------------------------------------|---|
| <b>1. BID SUBMISSION:</b>             |   |
| 1.1.                                  | BIDS MUST BE DELIVERED BY THE STIPULATED TIME TO THE CORRECT ADDRESS. LATE BIDS WILL NOT BE ACCEPTED FOR CONSIDERATION.   |
| 1.2.                                  | <b>ALL BIDS MUST BE SUBMITTED ON THE OFFICIAL FORMS PROVIDED (NOT TO BE RE-TYPED) OR IN THE MANNER PRESCRIBED IN THE BID DOCUMENT.</b>  |
| 1.3.                                  | THIS BID IS SUBJECT TO THE PREFERENTIAL PROCUREMENT POLICY FRAMEWORK ACT, 2000 AND THE PREFERENTIAL PROCUREMENT REGULATIONS, THE GENERAL CONDITIONS OF CONTRACT (GCC) AND, IF APPLICABLE, ANY OTHER SPECIAL CONDITIONS OF CONTRACT. |
| 1.4.                                  | <b>THE SUCCESSFUL BIDDER WILL BE REQUIRED TO FILL IN AND SIGN A WRITTEN CONTRACT FORM (SBD7).</b>   |
| <b>2. TAX COMPLIANCE REQUIREMENTS</b> |   |
| 2.1                                   | BIDDERS MUST ENSURE COMPLIANCE WITH THEIR TAX OBLIGATIONS.  |
| 2.2                                   | BIDDERS ARE REQUIRED TO SUBMIT THEIR UNIQUE PERSONAL IDENTIFICATION NUMBER (PIN) ISSUED BY SARS TO ENABLE THE ORGAN OF STATE TO VERIFY THE TAXPAYER'S PROFILE AND TAX STATUS.   |
| 2.3                                   | APPLICATION FOR TAX COMPLIANCE STATUS (TCS) PIN MAY BE MADE VIA E-FILING THROUGH THE SARS WEBSITE WWW.SARS.GOV.ZA.  |
| 2.4                                   | BIDDERS MAY ALSO SUBMIT A PRINTED PDF TCS CERTIFICATE TOGETHER WITH THE BID.  |
| 2.5                                   | IN BIDS WHERE CONSORTIA / JOINT VENTURES / SUB-CONTRACTORS ARE INVOLVED EACH PARTY MUST SUBMIT A SEPARATE TCS CERTIFICATE / PIN / CSD NUMBER.   |
| 2.6                                   | WHERE NO TCS PIN IS AVAILABLE BUT THE BIDDER IS REGISTERED ON THE CENTRAL SUPPLIER DATABASE (CSD), A CSD NUMBER MUST BE PROVIDED.   |
| 2.7                                   | NO BIDS WILL BE CONSIDERED FROM PERSONS IN THE SERVICE OF THE STATE, COMPANIES WITH DIRECTORS WHO ARE PERSONS IN THE SERVICE OF THE STATE, OR CLOSE CORPORATIONS WITH MEMBERS WHO ARE PERSONS IN THE SERVICE OF THE STATE*.         |

**NB: FAILURE TO PROVIDE OR COMPLY WITH ANY OF THE ABOVE PARTICULARS MAY RENDER THE BID INVALID.**

SIGNATURE OF BIDDER: .....

CAPACITY UNDER WHICH THIS BID IS SIGNED: .....  
(Proof of authority must be submitted e.g. company resolution)

DATE: .....

**FORM A14: DECLARATION OF TENDERER'S FINANCIAL SUBMISSION**

CONTRACT SANRAL R.072-020-2018/2  
FOR THE IMPROVEMENT WITHIN ALEXANDRIA ON NATIONAL ROUTE R72 SECTION 1 KM 48.70  
TO KM 49.85 AND SECTION 2 KM 0.00 TO KM 2.76

Notes to tenderer:

1. The signatory for the tenderer shall complete and sign this form declaring his/her understanding of the declaration form taking note of the points extracted below as contained in the tender document.
  
2. I, the undersigned, .....declare that:

I have submitted a balanced tender and have not tendered any negative rates, besides of Combined Site Laboratory contribution. I accept the risk of doing any work at our own tendered rates. However, I will rebalance my unit rates on request from the Employer where any unduly low or high rates are pointed out. I realise that by balancing my unit rates my tender amount will remain unchanged as prescribed in clause C.3.9 of the tender document.

The above information is to the best of my knowledge true and accurate.

SIGNATURE:

Signed and sworn before me at ..... on the ..... day of  
..... 20...

The deponent having:

- (i) acknowledged that he/she knows and understands the contents hereof;
- (ii) confirmed that he/she has no objection to the taking of the prescribed oath;
- (iii) that he/she considered the prescribed oath as biding upon his/her conscience; and

\_\_\_\_\_  
COMMISSIONER OF OATHS

**FORM B1: CONTRACTOR'S ESTABLISHMENT ON SITE**

CONTRACT SANRAL R.072-020-2018/2  
FOR THE IMPROVEMENT WITHIN ALEXANDRIA ON NATIONAL ROUTE R72 SECTION 1 KM 48.70  
TO KM 49.85 AND SECTION 2 KM 0.00 TO KM 2.76

**Note to Tenderer:**

**If the tenderer should require additional compensation for his obligations under Part C3 section 1.3 (over and above the total tendered for item C1.3.1) by including such additional compensation in the tendered rates and/or lump sum of items in the pricing schedule, these items and the value of such additional compensation shall also be set out in a letter attached to this form.**

Should the combined, extended total tendered for Item C1.3.1 The contractor's general obligations:

- C1.3.1.1 Fixed obligations
- C1.3.1.2 Value-related obligations
- C1.3.1.3 Time-related obligations

exceed a maximum of 20% of the tender sum, the tenderer shall clearly set out his reasons for tendering in this manner in a letter attached to this page.

The relevant regional project engineer will duly consider these reasons but reserves the right to consider the tendered rates to be imbalanced and to deal with them in terms of Tender Data clause C.3.9 contained in this volume.

Total tendered for Item C1.3.1 expressed as a percentage of the tender sum (excluding VAT) .....%

SIGNED BY TENDERER: .....

**FORM B2: SCHEDULE OF SPECIAL MATERIALS**

CONTRACT SANRAL R.072-020-2018/2  
 FOR THE IMPROVEMENT WITHIN ALEXANDRIA ON NATIONAL ROUTE R72 SECTION 1 KM 48.70  
 TO KM 49.85 AND SECTION 2 KM 0.00 TO KM 2.76

**Notes to tenderer:**

1. Refer to part C1.2.1 Conditions of Contract where subclause 13.8 of the FIDIC General Conditions of Contract has been amended.
2. Only net bitumen content of asphalt and bituminous products shall be subject to rise and fall and no account shall be taken of transport, emulsifiers, diluents or modifiers that may be supplied ex refinery or added later.
3. For the purpose of clarity when using this form, a supplier is any company (including refineries) that supplies to a tenderer a bituminous product that it manufactures using bitumen as the sole or blended ingredient in the product. A tenderer shall, in compliance with note 4 below, attach to this form a letter of supply from each supplier it intends using in the performance of the contract.
4. Tenderers shall append to this page the following information on a letterhead from their selected supplier:
  - the supplier’s company registration and address details; and
  - the product range available including refinery from which the base bitumen is drawn; and
  - the net base bitumen type and content for each product; and
  - the supply price (excluding VAT and any discounts but including all other obligatory taxes and levies) to the tenderer for the net bitumen base content of each product; and
  - the date from which the supply prices apply.
5. Rise and fall adjustments shall only be made upon receipt by the engineer of the appropriate letters of supply in compliance to note 4 above, but with the changed supply prices and date of application, as well as reasons for the changes.
6. A change of supplier may be permitted, but only upon application to the engineer with the appropriate letters of supply in compliance to Note 4 above and approval thereof.
7. Non-disclosure of reduction in supply prices shall be deemed a contractor’s deliberate action to defraud the Employer and grounds for the Employer, at its sole discretion, to terminate the contract.

Each material dealt with as a special material in terms of FIDIC clause 13.8 as amended is stated in the list below. The rates and prices for the special materials shall be furnished by the tenderer as an attachment to this Form B2, which rates and prices shall not include VAT but shall include all other obligatory taxes and levies.

| SPECIAL MATERIAL              | UNIT* | RATE OR PRICE FOR THE<br>BASE MONTH                   |
|-------------------------------|-------|---|
| Bitumen (Net bitumen content) | Ton   | As stated on supplier’s letter attached to this form. |

\*Indicate whether the material will be delivered in bulk or in containers.

SIGNED BY TENDERER: .....

## FORM C1.1: TENDERER'S B-BBEE VERIFICATION CERTIFICATE

### Notes to tenderer:

1. The tenderer shall attach to this form a valid B-BBEE verification certificate issued in accordance with:
  - the amended Construction Sector Codes published in Notice 931 of 2017 of Government Gazette No. 41287 on 1 December 2017 by the Department of Trade and Industry.
  - in the event that the Measured Entity operates in more than one sector or sub-sector, the scorecard for the sector or sub-sector in which the majority of its core activities (measured in terms of Annual Revenue) are located will be acceptable. The tenderer must comply with the annual revenue thresholds for EME or QSE or Generic in accordance with the amended Construction Sector Codes.
2. The certificate shall:
  - have been issued by a verification agency accredited by the South African National Accreditation System (SANAS); or
  - be in the form of a sworn affidavit or a certificate issued by the Companies and Intellectual Property Commission in the case of an Exempted Micro Enterprise (EME) with a total annual revenue of less than R3 million if issued in accordance with the amended Construction Sector Codes published in Notice 931 of 2017 of Government Gazette No. 41287 on 1 December 2017 by the Department of Trade and Industry; and
  - be valid at the original advertised tender closing date; and
  - have a date of issue less than 12 (twelve) months prior to the tender closing date (see Tender Data C.2.15).
3. If the B-BBEE Certificate is not valid,
4. A valid BBEE Certificates shall contain:
  - Name of enterprise as per enterprise registration documents issued by CIPC, and enterprise business address.
  - Value-Added Tax number, where applicable.
  - The B-BBEE Scorecard against which the certificate is issued, indicating all elements and scores achieved for each element. The actual score achieved must be linked to the total points as per the relevant Codes.
  - B-BBEE status with corresponding procurement recognition level.
  - The relevant Codes used to issue the B-BBEE verification certificate.
  - Date of issue and expiry (e.g. 9 June 2018 to 8 June 2019). Where a measured entity was subjected to a re-verification process, due to material change, the B-BBEE Verification Certificate must reflect the initial date of issue, date of re-issue and the initial date of expiry. Re-verification does not extend the lifespan of the B-BBEE Verification Certificate.
  - Financial period which was used to issue the B-BBEE Verification Certificate
5. A valid Sworn Affidavit shall contain:
  - - Name/s of deponent as they appear in the identity document and the identity number.
  - - Designation of the deponent as either the director, owner or member must be indicated in order to know that person is duly authorised to depose of an affidavit.
  - - Name of enterprise as per enterprise registration documents issued by the CIPC, where applicable, and enterprise business address.
  - - Percentage black ownership, black female ownership and whether they fall within a designated group.
  - - Indicate total revenue for the year under review and whether it is based on audited financial statements or management accounts.
  - - Financial year-end as per the enterprise's registration documents, which was used to determine the total revenue. **The valid format of the Financial Year-End is Day/Month/Year**
  - - B-BBEE status level. An enterprise can only have one status level.
  - - Date deponent signed and date of Commissioner of Oath must be the same.
  - - Commissioner of Oath cannot be an employee or ex officio of the enterprise because, a person cannot by law, commission a sworn affidavit in which they have an interest, and
6. In the event of a Joint Venture (JV), a project specific (SANRAL project number indicated) consolidated B-BBEE verification certificate in the name of the JV, shall be attached.
7. The attached verification certificate and the associated assessment report shall comply with the requirements of Tender Data clause C.3.11.8 and shall identify:
  - (a) The name and domicilium citandi et executandi of the tenderer.
  - (b) The registration and VAT number of the tenderer.
  - (c) The dates of granting of the B-BBEE score and the period of validity.

- (d) The expiry date of the verification certificate.
  - (e) A unique identification number.
  - (f) The standard and/or normative document, including the issue and/or revision used to evaluate the tenderer.
  - (g) The name and/or mark/logo of the B-BBEE verification agency.
  - (h) The category (Generic, QSE, EME) in which the tenderer has been measured.
  - (i) The B-BBEE status level.
  - (j) The South African National Accreditation System (SANAS) logo on the verification certificate once verification agencies have been accredited.
  - (k) The B-BBEE procurement recognition level.
  - (l) The score achieved per B-BBEE element.
  - (m) The % black shareholding.
  - (n) The % black women shareholding.
  - (o) The % black persons with disabilities shareholding
  - (p) The % black youth shareholding
  - (q) The % black people living in rural or underdeveloped areas or townships shareholding
  - (r) The % black military veterans shareholding
  - (s) The value-added status of the tenderer.
8. The Employer will not be responsible to acquire data that it needs for its own reporting systems and which may not form part of a verification agency's standard certificate format. The tenderer, at its own cost, must acquire any missing specified data listed in 4 above from its selected verification agency and have it recorded on the certificate. Alternatively, such missing data must be supplied separately, but certified as correct by the same verification agency and also attached to this form.
-

**FORM C1.2: PREFERENCE POINTS CLAIM FORM IN TERMS OF THE PREFERENTIAL PROCUREMENT REGULATIONS 2022 (INCORPORATING SBD6.1)**

CONTRACT SANRAL R.072-020-2018/2  
FOR THE IMPROVEMENT WITHIN ALEXANDRIA ON NATIONAL ROUTE R72 SECTION 1 KM 48.70 TO KM 49.85 AND SECTION 2 KM 0.00 TO KM 2.76

This preference form must form part of all tenders invited. It contains general information and serves as a claim form for preference points for specific goals.

**NB: BEFORE COMPLETING THIS FORM, TENDERERS MUST STUDY THE GENERAL CONDITIONS, DEFINITIONS AND DIRECTIVES APPLICABLE IN RESPECT OF THE TENDER AND PREFERENTIAL PROCUREMENT REGULATIONS, 2022**

**1. GENERAL CONDITIONS**

- 1.1 The following preference point systems are applicable to invitations to tender:  
-----the 80/20 system for requirements with a Rand value of up to R50 000 000 (all applicable taxes included); and  
-----the 90/10 system for requirements with a Rand value above R50 000 000 (all applicable taxes included).
- 1.2 To be completed by the organ of state  
(a) The applicable preference point system for this tender is the 90/10 preference point system.  
(b) The 90/10 preference point system will be applicable in this tender. The lowest/ highest acceptable tender will be used to determine the accurate system once tenders are received.
- 1.3 Points for this tender (even in the case of a tender for income-generating contracts) shall be awarded for:  
(a) Price; and  
(b) Specific Goals.
- 1.4 **To be completed by the organ of state:**  
The maximum points for this tender are allocated as follows:

|  | <b>POINTS</b> |
|--|---------------|
| <b>PRICE</b>                                     | 90            |
| <b>SPECIFIC GOALS</b>                            | 10            |
| <b>Total points for Price and Specific Goals</b> | <b>100</b>    |

- 1.5 Failure on the part of a tenderer to submit proof or documentation required in terms of this tender to claim points for specific goals with the tender, will be interpreted to mean that preference points for specific goals are not claimed.
- 1.6 The organ of state reserves the right to require of a tenderer, either before a tender is adjudicated or at any time subsequently, to substantiate any claim in regard to preferences, in any manner required by the organ of state.

**2. DEFINITIONS**

- (a) **“tender”** means a written offer in the form determined by an organ of state in response to an invitation to provide goods or services through price quotations, competitive tendering process or any other method envisaged in legislation;
- (b) **“price”** means an amount of money tendered for goods or services, and includes all applicable taxes less all unconditional discounts;
- (c) **“rand value”** means the total estimated value of a contract in Rand, calculated at the time of bid invitation, and includes all applicable taxes;

- (d) **“tender for income-generating contracts”** means a written offer in the form determined by an organ of state in response to an invitation for the origination of income-generating contracts through any method envisaged in legislation that will result in a legal agreement between the organ of state and a third party that produces revenue for the organ of state, and includes, but is not limited to, leasing and disposal of assets and concession contracts, excluding direct sales and disposal of assets through public auctions; and
- (e) **“the Act”** means the Preferential Procurement Policy Framework Act, 2000 (Act No. 5 of 2000).

### 3. FORMULAE FOR PROCUREMENT OF GOODS AND SERVICES

#### 3.1 THE 80/20 OR 90/10 PREFERENCE POINT SYSTEMS

A maximum of 80 or 90 points is allocated for price on the following basis:

$$\begin{array}{ccc}
 \mathbf{80/20} & \mathbf{or} & \mathbf{90/10} \\
 P_s = 80 \left( 1 - \frac{P_t - P_{\min}}{P_{\min}} \right) & \mathbf{or} & P_s = 90 \left( 1 - \frac{P_t - P_{\min}}{P_{\min}} \right)
 \end{array}$$

Where:

- P<sub>s</sub> = Points scored for price of tender under consideration
- P<sub>t</sub> = Price of tender under consideration
- P<sub>min</sub> = Price of lowest acceptable tender

### 4. POINTS AWARDED FOR SPECIFIC GOALS

- 4.1 In terms of Regulation 4(2); 5(2); 6(2) and 7(2) of the Preferential Procurement Regulations, preference points must be awarded for specific goals stated in the tender. For the purposes of this tender the tenderer will be allocated points based on the goals stated in table 1 below as may be supported by proof/ documentation stated in the conditions of this tender:
- 4.2 In cases where organs of state intend to use Regulation 3(2) of the Regulations, which states that, if it is unclear whether the 80/20 or 90/10 preference point system applies, an organ of state must, in the tender documents, stipulate in the case of—
  - (a) an invitation for tender for income-generating contracts, that either the 80/20 or 90/10 preference point system will apply and that the highest acceptable tender will be used to determine the applicable preference point system; or
  - (b) any other invitation for tender, that either the 80/20 or 90/10 preference point system will apply and that the lowest acceptable tender will be used to determine the applicable preference point system, then the organ of state must indicate the points allocated for specific goals for both the 90/10 and 80/20 preference point system.



**Table 1: Specific goals for the tender and points claimed are indicated per the table below**

| The specific goals allocated points in terms of this tender | Criteria                  | Number of points allocated<br>(90/10 system) | Number of points claimed (90/10 system)<br>(To be completed by the tenderer) |
|---|---------------------------|--|--|
| B-BBEE level scorecard of the tendering entity.             | B-BBEE Level 1            | 10.00  |  |
|   | B-BBEE Level 2            | 9.00   |  |
|   | B-BBEE Level 3            | 6.00   |  |
|   | B-BBEE Level 4            | 5.00   |  |
|   | B-BBEE Level 5            | 4.00   |  |
|   | B-BBEE Level 6            | 3.00   |  |
|   | B-BBEE Level 7            | 2.00   |  |
|   | B-BBEE Level 8            | 1.00   |  |
|   | Non-compliant contributor | 0.00   |  |

**Note to tenderers: The tenderer must indicate how they claim points for each preference point system.**

**5. DECLARATION WITH REGARD TO COMPANY/FIRM**

5.1 Name of company/firm: .....

5.2 Company registration number: .....

**5.3 TYPE OF COMPANY/ FIRM (*Tick applicable box*)**

- Partnership/Joint Venture / Consortium
- One person business/sole propriety
- Close corporation
- Public Company
- Personal Liability Company
- (Pty) Limited
- Non-Profit Company
- State Owned Company

5.4 I, the undersigned, who is duly authorised to do so on behalf of the company/firm, certify that the points claimed, based on the specific goals as advised in the tender, qualifies the company/ firm for the preference(s) shown and I acknowledge that:

- i) The information furnished is true and correct;
- ii) The preference points claimed are in accordance with the General Conditions as indicated in paragraph 1 of this form;
- iii) In the event of a contract being awarded as a result of points claimed as shown in paragraphs 1.4 and 4.2, the contractor may be required to furnish documentary proof to the satisfaction of the organ of state that the claims are correct;
- iv) If the specific goals have been claimed or obtained on a fraudulent basis or any of the conditions of contract have not been fulfilled, the organ of state may, in addition to any other remedy it may have –
  - (a) disqualify the person from the tendering process;
  - (b) recover costs, losses or damages it has incurred or suffered as a result of that person's conduct;
  - (c) cancel the contract and claim any damages which it has suffered as a result of having to make less favourable arrangements due to such cancellation;
  - (d) recommend that the tenderer or contractor, its shareholders and directors, or only the shareholders and directors who acted on a fraudulent basis, be restricted from obtaining business from any organ of state for a period not exceeding 10 years, after the audi alteram partem (hear the other side) rule has been applied; and
  - (e) forward the matter for criminal prosecution, if deemed necessary.

|  |
|--|
| <p>.....</p> <p><b>SIGNATURE(S) OF TENDERER(S)</b></p> <p><b>SURNAME AND NAME:</b> .....</p> <p><b>DATE:</b> .....</p> <p><b>ADDRESS</b> .....</p> <p>.....</p> <p>.....</p> |
|--|

**FORM D1: SCHEDULE OF TENDERER’S PLANT AND EQUIPMENT**

CONTRACT SANRAL R.072-020-2018/2  
 FOR THE IMPROVEMENT WITHIN ALEXANDRIA ON NATIONAL ROUTE R72 SECTION 1 KM 48.70  
 TO KM 49.85 AND SECTION 2 KM 0.00 TO KM 2.76

**Note to tenderer:**  
**The tenderer shall provide details of the major plant and equipment required for this project.**

The tenderer shall state below the number of each construction plant to be used on this project and what constructional plant will be immediately available for this contract, what constructional plant will become available by virtue of outstanding orders, and what further constructional plant will be acquired or hired for the work should the tenderer be awarded the contract.

- a) Constructional plant immediately available (I)
- b) Constructional plant on order (O)  
 (State details of arrangements made, with delivery dates)
- c) Constructional plant that will be acquired or hired (H)  
 (State details of delivery arrangements)

| PLANT AND EQUIPMENT TYPE            | NUMBER TO BE USED ON THIS PROJECT | DATE OF MANUFACTURE | AVAILABILITY (State either I, O or H) |
|-------------------------------------|-----------------------------------|---------------------|---------------------------------------|
| Safety Truck                        |                                   |                     |                                       |
| LDV                                 |                                   |                     |                                       |
| Milling machine                     |                                   |                     |                                       |
| Recycler                            |                                   |                     |                                       |
| Chip Spreader                       |                                   |                     |                                       |
| Binder Distributor                  |                                   |                     |                                       |
| Pneumatic tyre roller               |                                   |                     |                                       |
| Tandem roller                       |                                   |                     |                                       |
| Mechanical broom                    |                                   |                     |                                       |
| Front end loader                    |                                   |                     |                                       |
| Tipper trucks                       |                                   |                     |                                       |
| Asphalt paver                       |                                   |                     |                                       |
| Attenuator truck                    |                                   |                     |                                       |
| Compressor                          |                                   |                     |                                       |
| Pug mill mixer                      |                                   |                     |                                       |
| BSM Paver                           |                                   |                     |                                       |
| KMA Cold recycling mixing plant     |                                   |                     |                                       |
| Other: <i>Contractor to specify</i> |                                   |                     |                                       |
|                                     |                                   |                     |                                       |
|                                     |                                   |                     |                                       |
|                                     |                                   |                     |                                       |

SIGNED BY TENDERER: .....

**FORM D2: TENDERER'S METHOD STATEMENT**

CONTRACT SANRAL R.072-020-2018/2  
FOR THE IMPROVEMENT WITHIN ALEXANDRIA ON NATIONAL ROUTE R72 SECTION 1 KM 48.70  
TO KM 49.85 AND SECTION 2 KM 0.00 TO KM 2.76

**Note to tenderer:**  
**The tenderer shall provide a method statement with the details as indicated on this form.**

The method statement must respond to the Scope of Work and Project Information under Part C4 and outline the proposed approach/methodology. The method statement should articulate what value the Tenderer will add by in achieving the stated objectives for the project.

The Tenderer must as such explain the following:

- Its understanding of the objectives of the assignment and the Employer's stated and implied requirements,
- Highlight the issues of importance and explain the technical approach they would adopt to address them, and
- Explain the methodologies which are to be adopted, demonstrate the compatibility of those methodologies with the proposed approach. The approach should also include a quality plan which outlines processes, procedures and associated resources, applied by whom and when, to meet the requirements and indicate how risks will be managed and what contribution can be made regarding value management.

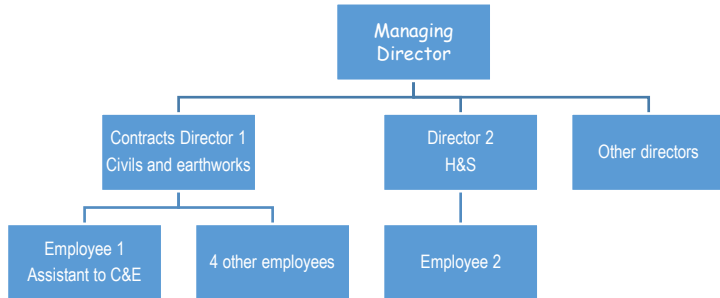
The tenderer must attach his/her approach paper to this page. The approach paper should not be longer than 5 pages.

SIGNED BY TENDERER: .....

**FORM D3: TENDERER'S ORGANISATION AND STAFFING**

**Notes to tenderer:**

1. The intention of this form is to demonstrate the tenderer's project structure, as well as the lines of responsibility between members of the project team and between the project team and the overall company structure. Attach own organogram to this form; do not populate the example diagram below.
2. Tenderers which are large companies may simplify the organogram by 'rolling up' portfolios e.g. combining directors/associates into one box of the organogram. However, the individual positions of the key persons within the structure must still be shown. The same person could fill multiple positions.
3. Joint Venture tenders require each element of the venture to submit separate organograms that show the individual structure of each member company and the lines of responsibility of the proposed personnel involved in the project. In addition, there must also be a combined organogram that indicates how the joint venture itself will function and the proposed share of the work will become a contractual obligation between the members of the joint venture.
4. State the city or town where the company's head office is located. The locality of regional or satellite offices, regardless of degree of autonomy or size is not required. Only submit the number of offices other than the head office. Do not count offices outside RSA.
5. Registered professional engineers, technicians or technologists means those who are involved in the road construction/transport industry. Registered professionals of other disciplines (e.g. mechanical) are considered as employees only.
6. In the lower table list those who will be involved in priority order of most to least responsibility for the service. Provide details of the key staff. Except for the MD, all of others must submit Forms D4. The same person may perform multiple roles.



|  |                                     |
|--|-------------------------------------|
| <b>Head Office:</b>  | <i>State City/Town. See note 4.</i> |
| <b>Other Offices:</b>  | <i>Only list number, See note 4</i> |
| <b>Registered Professionals: ECSA or in terms of ECSA approved International Agreements (PrEng, PrTechEng, PrCertEng, PrTechniEng)</b> | <i>See note 5</i>                   |
| <b>Registered Professionals: SACPCMP (Pr CM)</b>   | <i>See note 5</i>                   |
| <b>Total Employees :</b>   |                                     |
| <b>% share in JV agreement:</b>  | <i>State 100% if no JV</i>          |

| Name of employee | Position in team  | Estimated monthly hours | Relevant specialist areas of knowledge demonstrating suitability for position |
|------------------|---|-------------------------|---|
|                  | <b>Managing Director</b>                                  |                         |   |
|                  | <b>Contracts Director</b>                                 |                         |   |
|                  | <b>Contracts Manager</b>                                  |                         |   |
|                  | <b>Construction manager (Contractor's Representative)</b> |                         |   |
|                  |   |                         |   |

SIGNED BY TENDERER: .....

**FORM D4.1: TENDERER'S KEY PERSONNEL EXPERIENCE (CONTRACTS DIRECTOR)**

CONTRACT SANRAL R.072-020-2018/2

FOR THE IMPROVEMENT WITHIN ALEXANDRIA ON NATIONAL ROUTE R72 SECTION 1 KM 48.70 TO KM 49.85 AND SECTION 2 KM 0.00 TO KM 2.76

**Note to tenderer:**

1. The Tenderer shall provide details of the Contracts Director's professional registration, years' experience as well as details of previous experience required for this project.
2. The Contracts Director must meet the following minimum requirements as stipulated and the tenderer must append proof of registration to this form:

| Professional Registration                     | Minimum Years of Relevant Experience |
|---|--------------------------------------|
| SACPCMP as PrCM or ECSA as PrEng or PrTechEng | 15                                   |

3. Where ECSA registration is required, Professional Registration with the Engineering Council of South Africa (ECSA) or any other equivalent registration with an international body recognised by ECSA, i.e. Washington Accord, Dublin Accord and Sydney Accord, is accepted.
4. In the event that the Contracts Director are not in its permanent employment, the tenderer shall provide a signed undertaking from an organisation having the required personnel, stating that they will undertake the necessary work on behalf of the tenderer in terms of a sub-consultant agreement.
5. If the tenderer's experience does not meet the stipulated minimum requirement, or does not respond within stated period when requested to do so; the tender will be declared non-responsive in terms of clause C.3.13 (b) of the Tender Data.

| NAME | POSITION IN TEAM   | ECSA REG. No | ECSA CATEGORY | SACPCMP REG NO | SACPCMP CATEGORY | NO. OF YEARS EXPERIENCE |
|------|--------------------|--------------|---------------|----------------|------------------|-------------------------|
|      | CONTRACTS DIRECTOR |              |               |                |                  |                         |

Technical/Managerial Experience

(List only the most recent 5 projects of the key staff that the tenderer considers relevant to the specified scope of works)

| CLIENT | DESCRIPTION OF PROJECT | PROJECT START DATE | PROJECT END DATE | VALUE | POSITION HELD | CONTACT PERSON AND FIRM | CONTACT No. |
|--------|------------------------|--------------------|------------------|-------|---------------|-------------------------|-------------|
|        |                        |                    |                  |       |               |                         |             |
|        |                        |                    |                  |       |               |                         |             |
|        |                        |                    |                  |       |               |                         |             |
|        |                        |                    |                  |       |               |                         |             |
|        |                        |                    |                  |       |               |                         |             |

Comments:

---



---

I confirm that the information provided herein is true, that the projects reported, and the corresponding responsibilities are truly the experiences of the firm or consortium of firms tendering for this project.

SIGNED BY TENDERER: .....

**FORM D4.2: TENDERER'S KEY PERSONNEL EXPERIENCE (CONTRACTS MANAGER)**

CONTRACT SANRAL R.072-020-2018/2

FOR THE IMPROVEMENT WITHIN ALEXANDRIA ON NATIONAL ROUTE R72 SECTION 1 KM 48.70 TO KM 49.85 AND SECTION 2 KM 0.00 TO KM 2.76

**Note to tenderer:**

1. **The Tenderer shall provide details of the Contracts Manager's, professional registration, years' experience as well as details of previous experience required for this project.**
2. **The Contracts Manager must meet the following minimum requirements as stipulated and the tenderer must append proof of registration to this form:**

| <b>Professional Registration</b>              | <b>Minimum Years of Relevant Experience</b> |
|---|---|
| SACPCMP as PrCM or ECSA as PrEng or PrTechEng | 10  |

3. **Where ECSA registration is required, Professional Registration with the Engineering Council of South Africa (ECSA) or any other equivalent registration with an international body recognised by ECSA, i.e. Washington Accord, Dublin Accord and Sydney Accord, is accepted.**
4. **In the event that the Contracts Manager are not in its permanent employment, the tenderer shall provide a signed undertaking from an organisation having the required personnel, stating that they will undertake the necessary work on behalf of the tenderer in terms of a sub-consultant agreement.**
5. **If the tenderer's experience does not meet the stipulated minimum requirement, or does not respond within stated period when requested to do so; the tender will be declared non-responsive in terms of clause C.3.13 (b) of the Tender Data.**

| NAME | POSITION IN TEAM  | ECSA REG. No | ECSA CATEGORY | SACPCMP REG No | SACPCMP CATEGORY | NO. OF YEARS EXPERIENCE |
|------|-------------------|--------------|---------------|----------------|------------------|-------------------------|
|      | CONTRACTS MANAGER |              |               |                |                  |                         |



Technical/Managerial Experience

(List only the most recent 5 projects of the key staff that the tenderer considers relevant to the specified scope of

| CLIENT | DESCRIPTION OF PROJECT | PROJECT START DATE | PROJECT END DATE | VALUE | POSITION HELD | CONTACT PERSON AND FIRM | CONTACT No. |
|--------|------------------------|--------------------|------------------|-------|---------------|-------------------------|-------------|
|        |                        |                    |                  |       |               |                         |             |
|        |                        |                    |                  |       |               |                         |             |
|        |                        |                    |                  |       |               |                         |             |
|        |                        |                    |                  |       |               |                         |             |
|        |                        |                    |                  |       |               |                         |             |

Comments:

---



---

I confirm that the information provided herein is true, that the projects reported, and the corresponding responsibilities are truly the experiences of the firm or consortium of firms tendering for this project.

SIGNED BY TENDERER: .....

**FORM D4.3: TENDERER'S KEY PERSONNEL EXPERIENCE (CONSTRUCTION MANAGER (CONTRACTOR'S REPRESENTATIVE))**

CONTRACT SANRAL R.072-020-2018/2

FOR THE IMPROVEMENT WITHIN ALEXANDRIA ON NATIONAL ROUTE R72 SECTION 1 KM 48.70 TO KM 49.85 AND SECTION 2 KM 0.00 TO KM 2.76

**Note to tenderer:**

1. The Tenderer shall provide details of the Construction Manager's (Contractor's Representative's), professional registration, years' experience as well as details of previous experience required for this project.
2. The Construction Manager (Contractor's Representative) must meet the following minimum requirements as stipulated and the tenderer must append proof of registration to this form:

| Professional Registration                     | Minimum Years of Relevant Experience |
|---|--------------------------------------|
| SACPCMP as PrCM or ECSA as PrEng or PrTechEng | 10                                   |

3. Where ECSA registration is required, Professional Registration with the Engineering Council of South Africa (ECSA) or any other equivalent registration with an international body recognised by ECSA, i.e. Washington Accord, Dublin Accord and Sydney Accord, is accepted.
4. In the event that the Construction Manager (Contractor's Representative) are not in its permanent employment, the tenderer shall provide a signed undertaking from an organisation having the required personnel, stating that they will undertake the necessary work on behalf of the tenderer in terms of a sub-consultant agreement.
5. The Construction Manager (Contractor's Representative) shall be; employed full time on the Works, the single point of accountability and responsible for the management of the construction works.
6. If the tenderer's experience does not meet the stipulated minimum requirement or does not respond within stated period when requested to do so; the tender will be declared non-responsive in terms of clause C.3.13 (b) of the Tender Data.

| NAME | POSITION IN TEAM                                      | ECSA REG. NO | ECSA CATEGORY | SACPCMP REG NO | SACPCMP CATEGORY | NO. OF YEARS EXPERIENCE |
|------|---|--------------|---------------|----------------|------------------|-------------------------|
|      | CONSTRUCTION MANAGER<br>(CONTRACTOR'S REPRESENTATIVE) |              |               |                |                  |                         |

Technical/Managerial Experience

(List only the most recent 5 projects of the key staff that the tenderer considers relevant to the specified scope of works)

| CLIENT | DESCRIPTION OF PROJECT | PROJECT START DATE | PROJECT END DATE | VALUE | POSITION HELD | CONTACT PERSON AND FIRM | CONTACT No. |
|--------|------------------------|--------------------|------------------|-------|---------------|-------------------------|-------------|
|        |                        |                    |                  |       |               |                         |             |
|        |                        |                    |                  |       |               |                         |             |
|        |                        |                    |                  |       |               |                         |             |
|        |                        |                    |                  |       |               |                         |             |
|        |                        |                    |                  |       |               |                         |             |

Comments:

---



---

I confirm that the information provided herein is true, that the projects reported, and the corresponding responsibilities are truly the experiences of the firm or consortium of firms tendering for this project.

SIGNED BY TENDERER: .....

## **FORM D5.1: TENDERER'S EXPERIENCE BASED ON COMPLETED PROJECTS**

CONTRACT SANRAL R.072-020-2018/2

FOR THE IMPROVEMENT WITHIN ALEXANDRIA ON NATIONAL ROUTE R72 SECTION 1 KM 48.70 TO KM 49.85 AND SECTION 2 KM 0.00 TO KM 2.76

### **Note to tenderer:**

- 1. The tenderer shall provide details of previous experience required for this project in the spaces provided below and attach contract performance evaluation certificates in the form of CIDB Contractor Performance Reports or an official reference letters from previous employer(s)**
- 2. The Tenderer must have satisfactorily completed (at least completed as a prime contractor, joint venture member, management contractor or sub-contractor) a minimum number of three (3) similar contracts matching the subject project's scope of work, between 1st January 2018 and tender submission deadline. Each completed contract must have a minimum value that exceeds R45 000 000.00 and have a Performance Rating not less than zero (0) Adequate, as rated in terms of the CIDB Performance Rating system or official reference letters from previous employer(s).**
- 3. For contracts under which the Tenderer participated as a joint venture member or sub-contractor, only the Tenderer's share, by value, shall be considered to meet the minimum value requirement.**
- 4. If the Tenderer is a joint venture, the value of contracts completed by the individual joint venture members can be combined and shall be treated as one contract to determine whether the requirement of the minimum value of a single contract has been met. In the case of combined contracts, each contract performed by each member shall exceed fifty percent (50%) of the minimum value of a single contract as required for single entity. In determining whether the joint venture meets the requirement of total number of contracts, the number of contracts completed by all JV members each of value equal or more than the minimum value required shall be aggregated. For the afore-mentioned purpose, contracts which are combined to meet the minimum value shall be treated as one contract.**
- 5. If the tenderer's experience does not meet the stipulated minimum requirement e.g. less than the minimum stipulated number of recent civil engineering contracts; or If the proposed project is not relevant and as a result the tenderer does not meet the minimum requirement; the tender will be declared non-responsive in terms of clause C.3.13 (b) of the Tender Data.**

**(List only the most recent 3 projects of the firm that the tenderer considers relevant to the specified scope of works)**

| CLIENT | DESCRIPTION OF PROJECT | PROJECT START DATE | PROJECT END DATE | VALUE OF WORK (i.e. the service provided) inclusive of VAT (Rand) | CONTACT PERSON AND FIRM | CONTACT NUMBER | CIDB EQUIVALENT PERFORMANCE RATING (NOT REQUIRED WHERE AN OFFICIAL REFERENCE LETTERS FROM PREVIOUS EMPLOYER(S) IS ATTACHED) |
|--------|------------------------|--------------------|------------------|---|-------------------------|----------------|---|
|        |                        |                    |                  |   |                         |                |   |
|        |                        |                    |                  |   |                         |                |   |
|        |                        |                    |                  |   |                         |                |   |

Comments:

---



---

I confirm that the information provided herein is true, that the projects reported, and the corresponding responsibilities are truly the experiences of the firm or consortium of firms tendering for this project.

SIGNED BY TENDERER: .....

**FORM D5.2: TENDERER'S EXPERIENCE BASED ON PROJECTS IN PROGRESS**

CONTRACT SANRAL R.072-020-2018/2

FOR THE IMPROVEMENT WITHIN ALEXANDRIA ON NATIONAL ROUTE R72 SECTION 1 KM 48.70 TO KM 49.85 AND SECTION 2 KM 0.00 TO KM 2.76

**Note to tenderer:**

1. Submission of this form is optional. This form must be submitted if the tenderer does not comply with the requirements of Form D5.1, and elects to list projects that are in progress to comply with afore- mentioned requirements.
2. The Tenderer must list details of similar projects in progress (as a prime contractor, joint venture member, management contractor or sub-contractor) matching the subject project's scope of work, between 1st January 2018 and tender submission deadline. Each project in progress must have a certified value of work that exceeds 80% of the awarded value and exceeds R45 000 000.00, and have a Performance Rating not less than zero (0) Adequate, as rated in terms of the CIDB Performance Rating system. The Performance Rating and certified value of work at closing date must be confirmed by the Project Employer or Project Engineer in writing.
3. For contracts under which the Tenderer participated as a joint venture member or sub-contractor, only the Tenderer's share, by value, shall be considered to meet the minimum value requirement.
4. If the Tenderer is a joint venture, the value of contracts completed by the individual joint venture members can be combined and shall be treated as one contract to determine whether the requirement of the minimum value of a single contract has been met. In the case of combined contracts, each contract performed by each member shall exceed fifty percent (50%) of the minimum value of a single contract as required for single entity. In determining whether the joint venture meets the requirement of total number of contracts, the number of contracts completed by all JV members each of value equal or more than the minimum value required shall be aggregated. For the afore-mentioned purpose, contracts which are combined to meet the minimum value shall be treated as one contract.
5. If the tenderer's experience not meeting minimum requirements (certified value of work that exceeds 80% of the awarded value and exceeds specified rand value); or If the proposed project is not relevant and as a result the tenderer does not meet the minimum requirement; the tender shall be declared non-responsive.

(List only the most recent 3 projects of the firm that the tenderer considers relevant to the specified scope of works

| CLIENT | DESCRIPTION OF PROJECT | PROJECT START DATE | PROJECT END DATE | AWARD VALUE OF WORK (i.e. the service provided) inclusive of VAT (Rand) | VALUE OF WORKS CERTIFIED BY THE ENGINEER | CONTACT PERSON AND FIRM | CONTACT NUMBER | CIDB PERFORMANCE RATING |
|--------|------------------------|--------------------|------------------|---|--|-------------------------|----------------|-------------------------|
|        |                        |                    |                  |   |  |                         |                |                         |
|        |                        |                    |                  |   |  |                         |                |                         |
|        |                        |                    |                  |   |  |                         |                |                         |

Comments:

---

---

I confirm that the information provided herein is true, that the projects reported, and the corresponding responsibilities are truly the experiences of the firm or consortium of firms tendering for this project.

SIGNED BY TENDERER: .....

**FORM D6: TENDERER'S INDICATIVE PROGRAMME**

CONTRACT SANRAL R.072-020-2018/2  
FOR THE IMPROVEMENT WITHIN ALEXANDRIA ON NATIONAL ROUTE R72 SECTION 1 KM 48.70  
TO KM 49.85 AND SECTION 2 KM 0.00 TO KM 2.76

**Notes to tenderer:**

1. The tenderer shall attach an indicative programme, reflecting the:
  - Contract period;
  - proposed sequence or order of execution of the work;
  - Resources anticipated; and
  - tempo of execution of the various activities comprising the work for this contract.
2. The programme shall be in accordance with the information provided in Form D1: Schedule of Tenderer's Plant and Equipment, Form D2: Tenderer's Method Statement, Form D7: Schedule of Estimated Monthly Expenditure, Form D8: Schedule of Subcontractors, and with all other aspects of the tender.
3. If a tenderer wishes to submit an alternative tender then this form, appropriately completed, shall also be attached to the Pricing Schedule for the alternative proposal.

SIGNED BY TENDERER: .....



**FORM D7: SCHEDULE OF ESTIMATED MONTHLY EXPENDITURE**

CONTRACT SANRAL R.072-020-2018/2  
 FOR THE IMPROVEMENT WITHIN ALEXANDRIA ON NATIONAL ROUTE R72 SECTION 1 KM 48.70  
 TO KM 49.85 AND SECTION 2 KM 0.00 TO KM 2.76

**Note to tenderer:**

**If a tenderer wishes to submit an alternative tender then this form, appropriately completed, shall also be attached to the Pricing Schedule for the alternative proposal.**

The tenderer shall state his estimated value of the work to be completed every month, based on his preliminary programme and his tendered unit rates, in the table below.

| CERTIFICATE / MONTH | VALUE  | CERTIFICATE / MONTH | VALUE  |
|---------------------|--------|---------------------|--------|
| 1                   | R..... | TOTAL b/f           | R..... |
| 2                   | R..... | 9                   | R..... |
| 3                   | R..... | 10                  | R..... |
| 4                   | R..... | 11                  | R..... |
| 5                   | R..... | 12                  | R..... |
| 6                   | R..... | 13                  | R..... |
| 7                   | R..... | 14                  | R..... |
| 8                   | R..... | 15                  | R..... |
| TOTAL c/f           | R..... | 16(FINAL)*          | R..... |
|                     |        | TOTAL: R.....       |        |

\* Final payment at end of Defects Notification Period is for balance of retention and any other payments due.

SIGNED BY TENDERER: .....

**FORM D8: SCHEDULE OF SUBCONTRACTORS**

CONTRACT SANRAL R.072-020-2018/2  
 FOR THE IMPROVEMENT WITHIN ALEXANDRIA ON NATIONAL ROUTE R72 SECTION 1 KM 48.70 TO KM 49.85 AND SECTION 2 KM 0.00 TO KM 2.76

With regard to sub-clause 4.4 of the FIDIC Conditions of Contract as amended:

**Notes to tenderer:**

1. The tenderer shall list below the items of work he intends to subcontract.
2. Acceptance of this tender shall not be construed as approval of all or any of the listed subcontractors. Should any or all of the subcontractors not be approved subsequent to the acceptance of the tender, it shall in no way invalidate this tender, and the tendered unit rates for the various items of work shall remain final and binding, even in the event of a subcontractor not listed below being approved by the engineer.

| ITEM OF WORK | NAME OF SUBCONTRACTOR (IF KNOWN) AND INDICATE INTENDED SPECIALIST SUBCONTRACTORS WITH "S" | % VALUE OF THE TENDER AMOUNT SUB-CONTRACTED | B-BBEE STATUS LEVEL OF SUB-CONTRACTOR | STATE IF TARGETED ENTERPRISE | STATE IF EME |
|--------------|---|---|---------------------------------------|------------------------------|--------------|
|              |   |   |                                       |                              |              |
|              |   |   |                                       |                              |              |
|              |   |   |                                       |                              |              |
|              |   |   |                                       |                              |              |
|              |   |   |                                       |                              |              |
|              |   |   |                                       |                              |              |
|              |   |   |                                       |                              |              |

SIGNED BY TENDERER: .....

**FORM D9: CORPORATE SOCIAL INVESTMENT**

CONTRACT SANRAL R.072-020-2018/2  
FOR THE IMPROVEMENT WITHIN ALEXANDRIA ON NATIONAL ROUTE R72 SECTION 1 KM 48.70 TO KM 49.85 AND SECTION 2 KM 0.00 TO KM 2.76

With regard to clause D1012: Community Development, of the Project Specifications:

**Notes to tenderer:**

1. The tenderer shall list below his own Corporate Social Investment initiatives that will actively be pursued for this project.
2. The Corporate Social Investment initiatives will be evaluated and applied as objective criteria in terms of section 2(1)(f) of the Preferential Procurement Policy Framework Act, 2000.

| CSI INITIATIVE | COMMUNITY AFFECTED | ESTIMATED RAND VALUE OF INITIATIVE | ESTIMATED TIME FOR IMPLEMENTATION |
|----------------|--------------------|------------------------------------|-----------------------------------|
|                |                    |                                    |                                   |
|                |                    |                                    |                                   |
|                |                    |                                    |                                   |
|                |                    |                                    |                                   |
|                |                    |                                    |                                   |
|                |                    |                                    |                                   |
|                |                    |                                    |                                   |
|                |                    |                                    |                                   |

SIGNED BY TENDERER: .....

**FORM E5: PHOTOMETRIC FILES**

CONTRACT SANRAL R.072-020-2018/2  
FOR THE IMPROVEMENT WITHIN ALEXANDRIA ON NATIONAL ROUTE R72 SECTION 1 KM 48.70 TO  
KM 49.85 AND SECTION 2 KM 0.00 TO KM 2.76

**Note to Tenderer:**

**The Tenderer shall provide the photometric files and a simulation report using Dialux version 4.10 or later version so as to illustrate that the proposed LED luminaires complies with the lighting design as described below:**

**Lighting Design of Luminaires**

1. Maintenance factor of 0.9 shall be used in all the designs of the lighting.

**L1. Cross Road**

- 0. Type A3 road for  $\leq 600$  vehicles per hour per lane at night,
  - 1. Single arrangement for luminaires,
  - 2. Pole height is 12m,
  - 3. Pole spacing is 50m,
  - 4. 2 Lanes x 3.7m lane

**Total Cross Road Width: 7.4m**

The lighting level requirement as per SANS 10098 is:

**$Ln = >1\text{cd/m}^2$**   
 **$Uo = >0,4$**   
 **$UI = >0,6$**   
 **$TI = >20\%$**

**Proof must be submitted in the Dialux simulation report that the photometric files meet either SANS /IEC 10098 minimum requirements.**

**Failure to submit an electronic (soft) copy of the IES / DLX file and/or a copy of the Dialux simulation report shall render the tender non-responsive. SANRAL shall test these files to verify its compliance. Should the file submitted differ from SANRAL's test, then SANRAL shall decide on the appropriate action for this misrepresentation of information.**

SIGNED BY TENDERER:.....

**FORM E6: LAMP LIFESPAN**

CONTRACT SANRAL R.072-020-2018/2  
FOR THE IMPROVEMENT WITHIN ALEXANDRIA ON NATIONAL ROUTE R72 SECTION 1 KM 48.70 TO  
KM 49.85 AND SECTION 2 KM 0.00 TO KM 2.76

**Note to Tenderer:**

**The Tenderer shall provide a letter from the supplier on the following:**

1. Lamp lifespan
2. Lumen degradation
3. Components lifespan (if applicable)

SIGNED BY TENDERER:.....

**FORM E7: ELECTRICAL SCHEDULE OF MATERIALS**

CONTRACT SANRAL R.072-020-2018/2  
FOR THE IMPROVEMENT WITHIN ALEXANDRIA ON NATIONAL ROUTE R72 SECTION 1 KM 48.70 TO  
KM 49.85 AND SECTION 2 KM 0.00 TO KM 2.76

**Note to Tenderer:**

**The schedules must only be completed insofar as the equipment and materials required for this particular contract are concerned.**

**If these schedules are not properly completed by the Tenderer, his tender document will be regarded as incomplete.**

Where types, etc. are filled in below and these do not comply with the Specification, this must be specifically pointed out by the Tenderer. Filling in of types, etc. below does not, if they do not comply, signify that they are acceptable or will be accepted. Any changes to the poles, LED luminaires and/or cables must be approved in writing by SANRAL before making any changes.

**1. CABLES, CONDUCTORS AND ACCESSORIES**

| <b>EQUIPMENT AND MATERIAL</b> | <b>DESCRIPTION AND MAKE</b> |
|-------------------------------|-----------------------------|
| PVC SWA PVC LV Cable          |                             |
| PVC SWA PVC LV Cable glands   |                             |
|                               |                             |
|                               |                             |
|                               |                             |

**2. MINI SUBS, DISTRIBUTION KIOSKS AND EQUIPMENT**

| <b>EQUIPMENT AND MATERIAL</b>         | <b>DESCRIPTION AND MAKE</b> |
|---------------------------------------|-----------------------------|
| LV Distribution Kiosk SLK1/SLK2       |                             |
| Moulded Case Circuit Breakers (MCCB): |                             |
| Small frame                           |                             |
| Large frame                           |                             |
| Photo-electric switch                 |                             |
| Manual bypass switch                  |                             |
| Contactors                            |                             |
| Security sensors and cctv             |                             |

**3. LED LUMINAIRES**

| <b>TYPE</b> | <b>SUPPLIER AND LUMINAIRE INFORMATION</b> |
|-------------|---|
| L1          |   |
| L2          |   |
|             |   |
|             |   |

4.

|                     |  |
|---------------------|--|
|                     |  |
| <b>LIGHT POLES</b>  |  |
| <b>TYPE</b>         | <b>MANUFACTURER, CONSTRUCTION AND TYPE</b> |
| 12m Mounting Height |  |
|                     |  |

SIGNED BY TENDERER:.....

**FORM F1: SCHEDULE OF TENDER COMPLIANCE**

CONTRACT SANRAL R.072-020-2018/2  
 FOR THE IMPROVEMENT WITHIN ALEXANDRIA ON NATIONAL ROUTE R72 SECTION 1 KM 48.70 TO  
 KM 49.85 AND SECTION 2 KM 0.00 TO KM 2.76

**Note to tenderer:**

**This form has been created as an aid to ensure a tenderer's compliance with the completion of the returnable forms and schedules and subsequent uploading into the correct folder.**

| FORM NO / SBD NO | FORM DESCRIPTION  | TICK IF COMPLETED |
|------------------|---|-------------------|
| A1               | CERTIFICATE CONFIRMING THAT THE TENDERER READ THE PRESENTATION BRIEFING   |                   |
| A1.1             | CERTIFICATE OF INTENTION TO SUBMIT A TENDER   |                   |
| A2.1             | CERTIFICATE OF AUTHORITY FOR SIGNATORY  |                   |
| A2.2             | DECLARATION OF TENDERER'S CURRENT STATUS OF ANY DEBT OUTSTANDING TO SANRAL  |                   |
| A2.3             | CERTIFICATE OF SINGLE TENDER SUBMISSION   |                   |
| A2.4             | CERTIFICATE OF FRONTING PRACTICES   |                   |
| A2.5             | DECLARATION OF DOMESTIC PROMINENT INFLUENTIAL PERSONS, FOREIGN PROMINENT PUBLIC OFFICIALS OR FOREIGN INFLUENTIAL NATIONALS (DPIPs, FPPOs OR FINs) |                   |
| A2.6             | CERTIFICATE OF PERMISSION TO CONDUCT DUE DILIGENCE INVESTIGATION  |                   |
| A3.1 / SBD4      | BIDDER'S DISCLOSURE   |                   |
| A3.2 / SBD9      | CERTIFICATE OF INDEPENDENT TENDER – REPEALED & NOT APPLICABLE   |                   |
| A3.3 / SBD8      | DECLARATION OF TENDERER'S PAST SUPPLY CHAIN MANAGEMENT PRACTICES – REPEALED & NOT APPLICABLE  |                   |
| A3.4             | REGISTRATION ON NATIONAL TREASURY CENTRAL SUPPLIER DATABASE   |                   |
| A3.5             | DECLARATION CERTIFICATE FOR LOCAL PRODUCTION AND CONTENT FOR DESIGNATED SECTORS   |                   |
| A3.6             | LOCAL CONTENT DECLARATION: SUMMARY SCHEDULE   |                   |
| A4               | SCHEDULE OF DEVIATIONS OR QUALIFICATIONS BY TENDERER  |                   |
| A5               | SCHEDULE OF ADDENDA TO TENDER DOCUMENTS   |                   |
| A6 / SBD2        | CERTIFICATE OF TAX COMPLIANCE   |                   |
| A7               | CERTIFICATE OF INSURANCE COVER  |                   |
| A8               | TENDERER'S REGISTERED FINANCIAL SERVICE PROVIDER LETTER AND BANK DETAILS  |                   |
| A9.1             | SCHEDULE OF TENDER'S LITIGATION HISTORY   |                   |
| A9.2             | ENVIRONMENTAL, SOCIAL, HEALTH, AND SAFETY PERFORMANCE DECLARATION   |                   |
| A9.3             | COMPLIANCE WITH LABOUR LEGISLATION DECLARATION  |                   |
| A10              | SCHEDULE OF CURRENT COMMITMENTS   |                   |
| A11              | CERTIFICATE OF COMPLIANCE WITH COMPENSATION FOR OCCUPATIONAL INJURIES AND DISEASES ACT, 1993 (ACT NO. 130 OF 1993)                                |                   |
| A12              | CERTIFICATE OF REGISTRATION WITH CIDB   |                   |
| A13              | FORM SBD1 – INVITATION TO BID AND TERMS AND CONDITIONS FOR BIDDING  |                   |



|               |   |  |
|---------------|---|--|
| A16           | DECLARATION OF TENDERER'S FINANCIAL SUBMISSION  |  |
| B1            | CONTRACTORS ESTABLISHMENT ON SITE   |  |
| B2            | SCHEDULE OF SPECIAL MATERIALS   |  |
| C1.1          | TENDERER'S B-BBEE VERIFICATION CERTIFICATE  |  |
| C1.2 / SBD6.1 | PREFERENCE POINTS CLAIM FORM IN TERMS OF THE PREFERENTIAL PROCUREMENT REGULATIONS 2022 (INCORPORATING SBD6.1) |  |
| C1.3          | BLACK OWNERSHIP DECLARATION   |  |
| C1.4          | SUB-CONTRACTING DECLARATION   |  |
| D1            | SCHEDULE OF TENDERER'S PLANT AND EQUIPMENT  |  |
| D2            | TENDERER'S METHOD STATEMENT   |  |
| D3            | TENDERER'S ORGANISATION AND STAFFING  |  |
| D4.1          | TENDERER'S KEY PERSONNEL EXPERIENCE (Contracts Director)  |  |
| D4.2          | TENDERER'S KEY PERSONNEL EXPERIENCE (Contracts Manager)   |  |
| D4.3          | TENDERER'S KEY PERSONNEL EXPERIENCE (Construction manager (Contractor's Representative))                      |  |
| D5.1          | TENDERER'S EXPERIENCE BASED ON COMPLETED PROJECTS   |  |
| D5.2          | TENDERER'S EXPERIENCE BASED ON PROJECTS IN PROGRESS   |  |
| D6            | TENDERER'S INDICATIVE PROGRAMME   |  |
| D7            | SCHEDULE OF ESTIMATED MONTHLY EXPENDITURE   |  |
| D8            | SCHEDULE OF SUBCONTRACTORS  |  |
| D9            | CORPORATE SOCIAL INVESTMENT   |  |
| E5            | PHOTOMETRIC FILES   |  |
| E6            | LAMP LIFESPAN   |  |
| E7            | ELECTRICAL SCHEDULE OF MATERIALS  |  |
| C1.1.1 / SBD7 | FORM OF OFFER   |  |
| C1.2.3        | CONTRACT DATA – INFORMATION PROVIDED BY THE TENDERER  |  |
| C2.2 / SBD3   | PRICING SCHEDULE  |  |
| C.2.3         | SUMMARY OF PRICING SCHEDULE   |  |

SIGNED BY TENDERER: .....