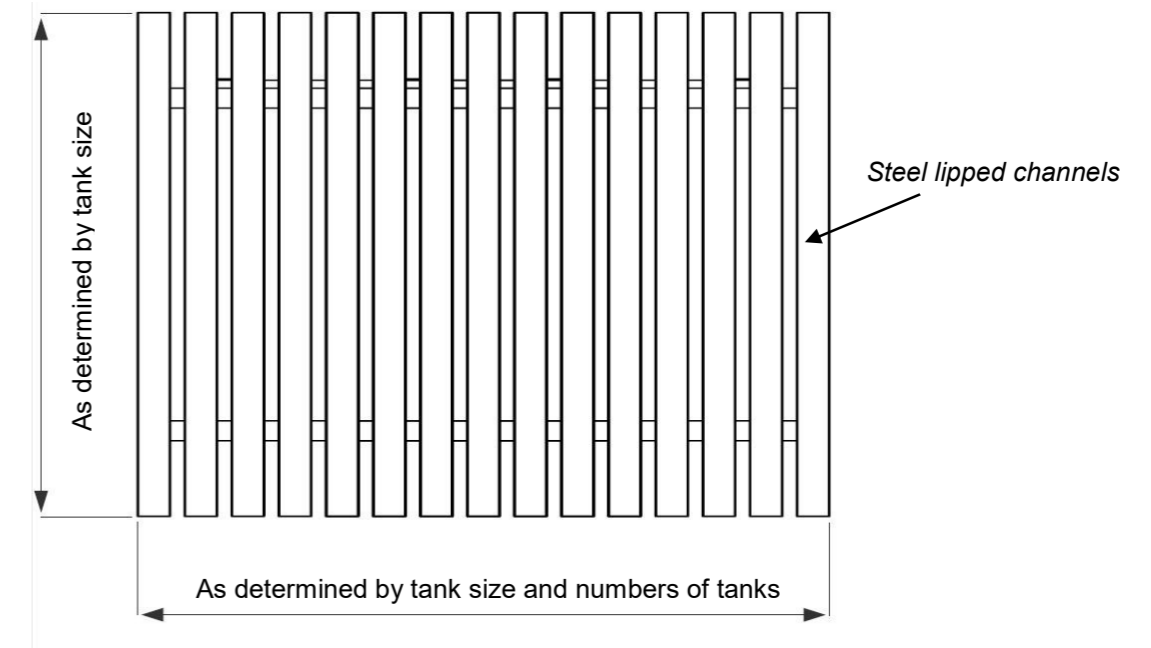
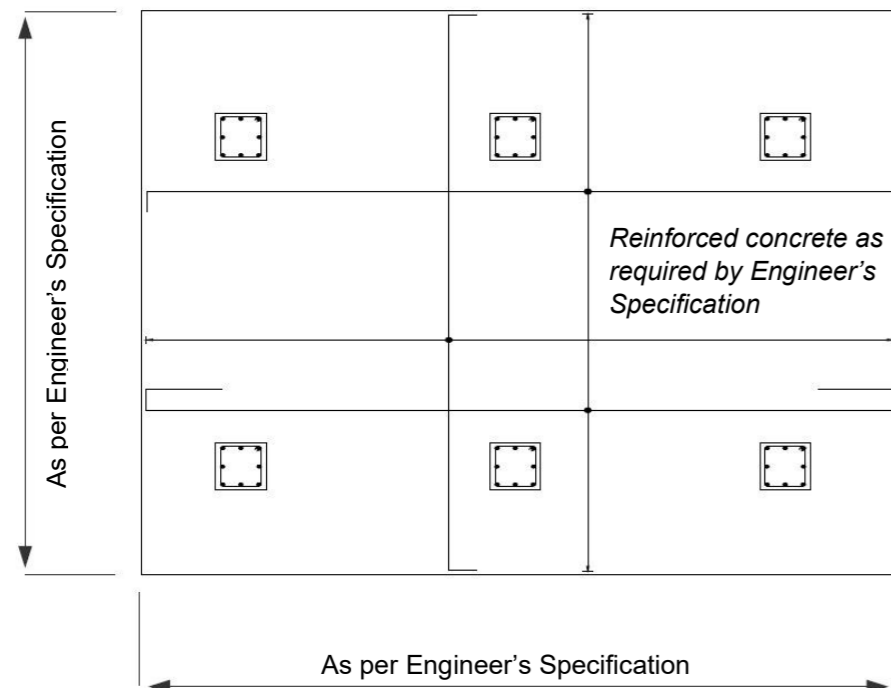


**STAND CONFIGURATION**



**STAND PLATFORM**



**FOUNDATION LAYOUT**

**NOTES:**

- High grade steel treated with min 2x coats red oxide and 2x coats 'dark admiralty grey' epoxy enamel paint
- Engineers Certificate to be provided by Supplier as per;
- SANS 10160 Parts 1 to 8 - 2011. Loading code
- SANS 10162 Parts 1 and 2 - 2011. Structural steel design code
- Structure to allow for full tank load, wind and local soil conditions
- Raft foundation design and plinth / baseplate as per Engineer's Specification
- Min 40mm water pipe diameter
- HDPE Class 10 pipe for below ground installation
- Galvanized steel pipe for above ground installation
- Tank to be tied down as per manufacturer's specification (min 4mm galvanized steel wire)

**TYPICAL TANK STAND CONFIGURATION**