



CLUSTER  
Human Settlement, Engineering, and Transport

UNIT  
Human Settlements

DEPARTMENT  
Housing Engineering

**PROCUREMENT DOCUMENT**  
**INFRASTRUCTURE**

Documents are to be obtained, free of charge, in electronic format, from the [National Treasury's eTenders website](#) or the [eThekweni Municipality's website](#).

Contract No: **1H-28518**

Contract Title: **Completion of Civil Infrastructure Services and Top Structures at Etafuleni Housing Project**

Est. CIDB Grade/ Class: **7 CE**

**CLARIFICATION MEETING AND QUERIES**

Clarification Meeting: **Compulsory Clarification Meeting**

Meeting Location, Date, Time: **Etafuleni Housing Project Cnr M25 (Mafukuzela Highway) and Cemetery Road  
On 07 March 2024 at 10H00am**

Queries can be addressed to: **Mxolisi Tshabalala  
Tel: 031-322-8813**  
The Employer's Agent's: **Email: [Mxolisi.Tshabalala@durban.gov.za](mailto:Mxolisi.Tshabalala@durban.gov.za). Email queries to be submitted by  
Representative: **19 March 2024 and consolidated answers to questions will be uploaded 26 March 2024****

**TENDER SUBMISSION**

Delivery Location: **The Tender Box in the foyer of the Municipal Building  
166 KE Masinga Road, Durban**

Closing Date/ Time: **Friday, 05 April 2024** at **11h00**

**FACSIMILE, Email, or POSTED TENDERS WILL NOT BE ACCEPTED**

Issued by:

ETHEKWINI MUNICIPALITY

Deputy Head: [Housing Engineering](#)

Date of Issue: [01/03/2024](#)

Document Version 24/02/2023(c)

**FOR OFFICIAL USE ONLY**

Tenderer Name:			VAT Registered: Yes No
	Price (excl)	VAT	Price (incl)
Submitted: R	R	R	R
Corrected: R	R	R	R

## INDEX to PROCUREMENT DOCUMENT

<b>TENDER PART</b>	<b>Part T1</b>	<b>TENDERING PROCEDURES</b>		<b>Page</b>
		<b>T1.1 Tender Notice and Invitation to Tender</b>		
		T1.1.1 Tender Notice and Invitation to Tender .....		<b>2</b>
		<b>T1.2 Tender Data</b>		
		T1.2.1 Standard Conditions of Tender .....		<b>3</b>
		T1.2.2 Tender Data ( <i>applicable to this tender</i> ) .....		<b>3</b>
	T1.2.3 Additional Conditions of Tender .....		<b>13</b>	
	<b>Part T2</b>	<b>RETURNABLE DOCUMENTS</b>		<b>Page</b>
		<b>T2.1 List of Returnable Documents</b> .....		<b>14</b>
		<b>T2.2 Returnable Schedules, Forms and Certificates</b> .....		<b>15</b>

<b>CONTRACT PART</b>	<b>Part C1</b>	<b>AGREEMENT AND CONTRACT DATA</b>		<b>Page</b>
		<b>C1.1 Form of Offer and Acceptance</b>		
		C1.1.1 Offer .....		<b>52</b>
		C1.1.2 Acceptance .....		<b>53</b>
		C1.1.3 Schedule of Deviations .....		<b>54</b>
		<b>C1.2 Contract Data</b>		
		C1.2.1 Standard Conditions of Contract.....		<b>55</b>
		C1.2.2 Contract Data.....		<b>56</b>
		C1.2.3 Additional Conditions of Contract .....		<b>64</b>
		<b>Part C2</b>	<b>PRICING DATA</b>	
	<b>C2.1 Pricing Assumptions / Instructions</b> .....			<b>66</b>
	<b>C2.2 Bill of Quantities</b> (separate page numbering system).....			<b>68</b>
	<b>Part C3</b>	<b>SCOPE OF WORK</b>		<b>Page</b>
		<b>C3.1 Project Description and Scope of Contract</b> .....		<b>87</b>
		<b>C3.2 Project Specifications</b> .....		<b>93</b>
		<b>C3.3 Standard Specifications</b> .....		<b>108</b>
		<b>C3.4 Particular Specifications</b> .....		<b>111</b>
		<b>C3.5 Contract and Standard Drawings</b> .....		<b>112</b>
		<b>C3.6 Annexures</b> .....		<b>113</b>
	<b>Part C4</b>	<b>SITE INFORMATION</b>		<b>Page</b>
		<b>C4.1 Locality Plan</b> .....		<b>114</b>
		<b>C4.2 Conditions on Site</b> .....		<b>115</b>
		<b>C4.3 Test Results</b> .....		<b>115</b>

**PART T1: TENDERING PROCEDURES****T1.1.1: TENDER NOTICE AND INVITATION TO TENDER**

Tenders are hereby invited for the works to **completion of civil infrastructure and top structures at eTafuleni Housing Project. The construction of roads, stormwater, sewer, portable water and top structures is anticipated to be constructed and completed within a period of a 18 months.**

<b>Subject</b>	<b>Description</b>	<b>Tender Data Ref.</b>
<b>Employer</b>	The Employer is the eThekweni Municipality as represented by: Deputy Head: <b>Housing Engineering</b>	F.1.1.1
<b>Tender Documents</b>	Documents can only be obtained in electronic format, issued by the eThekweni Municipality. Documentation can be downloaded from the <b>National Treasury's eTenders website</b> or the <b>eThekweni Municipality's Website</b> . The <u>entire document</u> should be printed (on A4 paper) and suitably bound by the tenderer.	F.1.2
<b>Eligibility</b>	It is <u>estimated</u> that tenderers should have a CIDB contractor grading designation of <b>7 CE</b> (or higher). The CIDB provisions in relation to a Contractor's Potentially Emerging (PE) status <u>do not</u> apply.	F.2.1.1
<b>Clarification Meeting</b>	<b>Etafuleni Housing Project Cnr M25 (Mafukuzela Highway) and Cemetery Road</b> <b>On 07 March 2024 at 10H00am</b>	F.2.7
<b>Seek Clarification</b>	Queries relating to these documents are to be addressed to the Employer's Agent's Representative whose contact details are: <b>Mxolisi Tshabalala</b> <b>Tel: 031-322-8813</b> <b>Email: Mxolisi.Tshabalala@durban.gov.za. Email queries to be submitted by 19 March 2024 and consolidated answers to questions will be uploaded 26 March 2024</b>	F.2.8
<b>Submitting a Tender Offer</b>	Tender offers shall be delivered to: <b>The Tender Box in the foyer of the Municipal Building</b> <b>166 KE Masinga Road, Durban</b>	F.2.13
<b>Closing Time</b>	Tender offers shall be delivered on or before <b>Friday, 05 April 2024</b> at or before <b>11h00</b> .	F.2.15
<b>Evaluation of Tender Offers</b>	<b>The 80/20</b> Price Preference Point System, as specified in the PPPFA Regulations 2022 will be applied in the evaluation of tenders. Refer to Clause F.3.11 of the Tender Data for the <b>Specific Goal(S)</b> for the awarding of Preference Points, and other related evaluation requirements.	F.3.11

**Requirements for sealing, addressing, delivery, opening and assessment of tenders are further stated in the Tender Data**

## PART T1: TENDERING PROCEDURES

### T1.2: TENDER DATA

#### **T1.2.1 STANDARD CONDITIONS OF TENDER**

The conditions of tender are the Standard Conditions of Tender as contained in Annex F of the CIDB Standard for Uniformity in Construction Procurement (July 2015) as published in Government Gazette No 38960, Board Notice 136 of 2015 of 10 July 2015.

The Standard Conditions of Tender make several references to the Tender Data for details that apply specifically to this tender. The Tender Data shall have precedence in the interpretation of any ambiguity or inconsistency between it and the Standard Conditions of Tender.

#### **T1.2.2 TENDER DATA**

Each item of data given below is cross-referenced to the clause in the Standard Conditions of Tender to which it mainly applies.

### F.1: GENERAL

**F.1.1 The employer:** The Employer for this Contract is the eThekweni Municipality as represented by: Deputy Head: [Housing Engineering](#)

**F.1.2 Tender documents:** The Tender Documents issued by the Employer comprise:

- 1) This procurement document.
- 2) “General Conditions of Contract for Construction Works – 3<sup>rd</sup> Edition 2015” issued by the South African Institution of Civil Engineering (GCC 2015). This document is obtainable separately, and Tenderers shall obtain their own copies.
- 3) “City of Durban Technical Specifications” hereinafter referred to as the Standard Engineering Specifications. This document is obtainable separately, and Tenderers shall obtain their own copies of the applicable Sections.
- 4) Drawings, issued separately from this document, or bound in Section C3.4 (as an Annexure).
- 5) In addition, Tenderers are advised, in their own interest, to obtain their own copies of the following acts, regulations, and standards referred to in this document as they are essential for the Tenderer to get acquainted with the basics of construction management, the implementation of preferential construction procurement policies, and the participation of targeted enterprise and labour.
  - The Employer’s current (as at advertising date) Supply Chain Management Policy.
  - The Preferential Procurement Policy Framework Act No 5 of 2000, and the Preferential Procurement Policy Framework Act Regulations (2022).
  - The Occupational Health and Safety Act No 85 and Amendment Act No 181 of 1993, and the Construction Regulations (2014).
  - The Construction Industry Development Board Act No 38 of 2000 and the Regulations issued in terms of the Act (July 2013).
  - SANS 1921:2004 – Construction and Management Requirements for Works Contract, Parts 1-3.
  - Any other eThekweni Policy documents referenced in the Tender Documents.

Electronically downloaded documentation is obtainable from the National Treasury's **eTenders Website** or the **eThekweni Municipality's Website** at URLs:

- <https://www.etenders.gov.za/>
- <https://www.durban.gov.za/pages/business/procurement>

The entire downloaded document should be printed on white A4 paper (single-sided) and suitably bound by the tenderer.

**F.1.4 Communication and employer's agent:** The Employer's Agent's Representative is:

**Mxolisi Tshabalala**

**Tel: 031-322-8813**

**Email: [Mxolisi.Tshabalala@durban.gov.za](mailto:Mxolisi.Tshabalala@durban.gov.za). Email queries to be submitted by 19 March 2024 and consolidated answers to questions will be uploaded 26 March 2024**

The Tenderer's contact details, as indicated in the Contract Data: Clause C1.2.2.2 "Data to Be Provided by Contractor", shall be deemed as the only valid contact details for the Tenderer for use in communications between the Employer's Agent and the Tenderer.

**F.1.6 Procurement procedures:** The competitive negotiation procedure shall be applied.

## F.2: TENDERER'S OBLIGATIONS

### F.2.1.1 Eligibility: General

A Tenderer will not be eligible to submit a tender if:

- (a) the Tenderer does not comply with the legal requirements as stated in the Employer's current SCM Policy.
- (b) the Tenderer cannot provide proof that he is in good standing with respect to duties, taxes, levies and contributions required in terms of legislation applicable to the work in the contract.
- (c) In the event of a Compulsory Clarification Meeting:
  - i) the Tenderer fails to attend the Compulsory Clarification Meeting.
  - ii) the Tenderer fails to have form "Certificate of Attendance at Clarification Meeting / Site Inspection" (in T2.2) signed by the Employer's Agent or his representative.
- (d) in the case of JV submissions, two or more JV entities have common directors / shareholders or common entities tendering for the same works.
- (e) at the time of closing of tenders, the Tenderer is not registered on the National Treasury Central Supplier Database (CSD) as a service provider. In the case of a Joint Venture, this requirement will apply individually to each party in the Joint Venture.
- (f) The tenderer has not submitted, with this tender, a valid Letter of Good Standing from the Compensation Commissioner as proof of being registered and in good standing with the compensation fund. Reference is to be made to Returnable Document T2.2.13.
- (g) The tender fails to complete and sign the Declaration of Municipal Fees in T2.2: "Returnable Documents" and submits the required documentation. Reference is to be made to Returnable Document T2.2.12.

SCM Policy (Cl.14(4)) requires suppliers/ service providers/ contractors to be registered on the

eThekwini Municipality Central Supplier Database or be in a position to be so before the award.

In the event of the Tenderer not being registered on the eThekwini Municipality's Central Supplier Database, the tenderer must register on the internet at [www.durban.gov.za](http://www.durban.gov.za) by following these links:

- Business
- Supply Chain Management (SCM)
- Accredited Supplier and Contractor's Database.

The following are to be noted:

- (a) The information for registration as in the possession of the eThekwini Municipality will apply.
- (b) It is the Tenderer's responsibility to ensure that the details as submitted to the Municipality are correct.
- (c) Tenderers are to register prior to the submission of tenders.

#### F.2.1.2 Eligibility: CIDB

Only those tenderers who are registered (as "Active") with the CIDB (at time of tender closing), in a contractor grading designation equal to or higher than a contractor grading designation determined in accordance with the sum tendered, or a value determined in accordance with Regulation 25 (1B) or 25(7A) of the Construction Industry Development Regulations, for a **CE** class of construction work, are eligible to have their tenders evaluated.

Joint ventures are eligible to submit tenders provided that:

- (a) Every member of the joint venture is registered (as "Active") with the CIDB (at time of tender closing),
- (b) The lead partner has a contractor grading designation in the **CE** class of construction work and has a grading designation of not lower than one level below the required grading designation, and
- (c) The combined contractor grading designation calculated in accordance with the Construction Industry Development Regulations (2013) is equal to or higher than a contractor grading designation determined in accordance with the sum tendered for a **CE** class of construction work or a value determined in accordance with Regulation 25 (1B) or 25(7A) of the Construction Industry Development Regulations.

It should be noted that this contract is not part of a Targeted Development Programme (TDP). The CIDB provisions in relation to a Contractor's Potentially Emerging (PE) status do not apply.

#### F.2.1.3 Eligibility: Tenderer's Experience

Only those tenderers that can demonstrate experience, by the submission of the specified returnable document in T2.2 (duplicated for each experience submission), and supply the associated documentation/ information, in works of a similar nature, within the past 7 years, will be eligible to have their tenders evaluated in terms of Clause F.3.11.

Tenderers may submit experience gained as Sub-Contractors or Main Contractors.  
Tenderers must submit experience gained as Main Contractors.

**Returnable form T2.2.16: “Eligibility: Experience of Tenderer” is to be duplicated for each experience submission, as may be required.**

Contact details of the Client or Main Contractor (if experience was gained as a sub-contractor), is required to be provided on the above-mentioned form. The contact details may be used by the Employer to verify the information, pertaining to the experience submission, as provided by the Tenderer. Should the Employer’s reasonable attempts to make contact with the Client or Main Contractor, to verify the information provided, fail (for whatever reason), that specific experience submission will be considered invalid.

Where works are still in progress the value of completed work as detailed on the most recent payment to the Contractor / Sub-Contractor is to be used in the experience submission.

In the event of a Joint Venture (JV) tendering for this contract, experience gained by the separate entities making up the JV may be used as experience provided that the experience requirement, as stipulated in **Table 2**, is satisfied, and that the required documentation/ information is provided.

The documentation/ information that is required is specified on **Table 1**: “Documentation / Information Requirements” (which includes the Notes below the table), and the experience requirement is as stated on **Table 2**: “Tenderer’s Experience Requirement”.

Table 1: Documentation / Information Requirements

Note: an “X” in this table indicates that the associated documentation must be provided, if applicable.	Proof of Sub-Contract Agreement	Letter of Award OR Form of Offer & Acceptance	Most recent Payment Certificate OR Invoice with Quantities summary	Final Payment Certificate OR Invoice with Quantities summary	Completion Certificate	NB Scope of Work
	Note 1	Note 2	Note 3	Note 4	Note 5	Note 6
<b>Works as Sub-Contractor</b>						
Current Contracts	X	/	X	/	/	X
Completed Contracts	X	/	/	X	/	X
<b>Works as Main Contractor</b>						
Current Contracts	/	X	X	/	/	X
Completed Contracts	/	X	/	X	X	X
Failure to submit the returnable form T2.2.16, <u>and</u> provide the above supporting documentation/ information, for each submission of experience, will invalidate that experience submission						

Table 1: NOTES

Note 1	Must include the names of the parties, the managing entity's name, the effective dates, and the signature(s) page, all pertaining to the agreement.
Note 2	Issued by the Client / Employer.
Note 3	Proof of the most recent payment received from the Main Contractor or Client/ Employer, OR most recent submitted INVOICE, with a summary breakdown of quantities.
Note 4	Proof of the final payment received from the Main Contractor or Client/ Employer, OR most recent submitted INVOICE, with a summary breakdown of quantities.
Note 5	Issued by the Client/ Employer.
Note 6	<p>NB: Without this information the experience submission cannot be considered.</p> <ul style="list-style-type: none"> <li>• This submission must indicate how the works carried out, either as a Sub-Contractor or a Main Contractor, is similar (see Table 2: Tenderer's Experience Requirement) to the Scope-of-Work of this specific tender.</li> <li>• If executed as a Sub-Contractor, the Scope-of-Work should be indicative of only the works carried out by the Sub-Contractor, and not the overall Scope-of-Work of the main contract.</li> <li>• If executed as a Main Contractor, the overall contract Scope-of-Work is to be provided.</li> <li>• The description of the Scope-of-Work is to be inserted into the returnable form in T2.2.16, or if available as a hard copy (max. 2 pages) attached to the form with the other relevant, associated, supporting documentation.</li> </ul>

Table 2: Tenderer's Experience Requirement

**Experience Requirement: Contract(s) with works of a similar nature, within the past 7 years**

A minimum of three (3) Contract(s), where the combined value of completed work is at least 50% of the tender value submitted for this tender.  
 Contracts of similar works (Civil works – Water, Sewer and Roads and stormwater) must have been executed as a Main Contractor and or Sub-Contractor.

**Note:** **The failure to complete the relevant returnable form T2.2.16 for each submission of experience AND supply the associated, relevant, documentation (as specified on Table 1) will invalidate the experience submission.**

#### F.2.1.4 Eligibility: Experience of key personnel

Prospective tenderers will only be eligible to submit a tender if;

- a) The contracts Manger;
  1. Has a minimum of five (5) years relevant construction related experience
  2. Is registered with SACPCMP as PrCM or with ECSA as PrEng or PrTech Eng;
- b) The site Agent;
  1. Must be full time on site for the duration of the contract
  2. Has a minimum of five (5) years relevant construction related experience.
  3. Is registered with SACPCMP as PrCM or with ECSA as PrEng or PrTech Eng
  4. Has an NQF level 5 certificate
- c) The Site Foreman;
  1. Must be full time on site for the duration of the contract
  2. Has a minimum of five (5) years relevant construction of township services and infrastructure experience.
  3. Has an NQF level 5 certificate

#### F.2.2.2 The cost of the tender documents:

"Documents are to be obtained, free of charge, in electronic format, from the **National Treasury's eTenders website** or the **eThekweni Municipality's Website**. The entire electronically downloaded document should be printed on white A4 paper (single-sided) and suitably bound by the tenderer.

#### F.2.6 Acknowledge addenda: Add the following paragraphs to the clause:

"Addenda will be published, in electronic format, on the websites specified in F.1.2. Tenderers are to



ensure that the eTenders website is consulted for any published addenda pertaining to this tender up to three days before the tender closing time as stated in the Tender Data.”

“Acknowledgement of receipt of the addenda will be by the return of the relevant completed, dated, and signed portion of the addenda, to the physical or email address as specified on the addenda. Failure of the tenderer to comply with the requirements of the addenda may result in the tender submission being made non-responsive.”

**F.2.7 Clarification meeting:**  
**Etafuleni Housing Project Cnr M25 (Mafukuzela Highway) and Cemetery Road**  
**On 07 March 2024 at 10H00am**

In the event of a Compulsory Clarification Meeting, Tenderers must sign the attendance register in the name of the tendering entity. The Tenderer's representative(s) at the clarification meeting must be able to clearly convey the discussions at the meeting to the person(s) responsible for compiling the entity's tender offer.

**F.2.12 Alternative tender offers:** No alternative tender offers will be considered.

**F.2.13 Submitting a tender offer:** Submissions must be submitted on official submission documentation issued (either in hard copy or in electronic format) by the eThekweni Municipality.

Identification details to be shown on each tender offer package are:

- Contract No. : **1H-28518**
- Contract Title : **Completion of Civil Infrastructure Services and Top Structures at Etafuleni Housing Project**

The Employer's address for delivery of tender offers is:

**The Tender Box in the foyer of the Municipal Building**  
**166 KE Masinga Road, Durban**

Parts of each tender offer communicated on paper shall be submitted as an original, plus 1 electronic copy (on a memory stick).

Tenderers are to include, with their paper (“hard copy”) submission, a memory-stick containing an electronically scanned (300 dpi resolution) Public Document Format (PDF) copy of their complete bid submission. This PDF file should be named using the contract number and the Tenderer's name, e.g. “1H-28518 – Tenderers Name.PDF”. The memory-stick must be labelled with the Tenderer's name and securely fixed to the paper submission.

Telephonic, telegraphic, telex, facsimile or e-mailed tender offers will not be accepted.

**F.2.15 Closing time:** The closing time for delivery of tender offers is:

- Date : **Friday, 05 April 2024**
- Time : **11h00**

**F.2.16 Tender offer validity:** The Tender Offer validity period is 120 Days from the closing date for submission of tenders.

**F.2.23 Certificates:** Refer to T2.1 for a listing of certificates that must be provided with the tender. All certificates must be valid at the time of tender closing.

**Tenderers are to include, at the back of their tender submission document, a printout of the required documents/ certificates.**

The Form of Offer (C1.1.1), Data to be provided by the Contractor (C1.2.2.2), and the Bill of Quantities (C2.2) are also required to be completed in full.

#### **Tax Clearance**

Reference is also to be made to returnable form T2.2.3: “Tax Compliance Status PIN/ Tax Clearance Certificate”.

SARS has introduced a new Tax Compliance Status System. Tenderers must submit a **Tax Compliance Status PIN** (TCS PIN) instead of an original Tax Clearance Certificate. This TCS PIN can be used by third parties to certify the taxpayer’s real-time compliance status. This TCS PIN is to be entered on Returnable Document T2.2.1: “Compulsory Enterprise Questionnaire”. Separate Tax Clearance Certificates / TCS PINs are required for each entity in a Joint Venture.

**Failure to comply will make the tender non-responsive.**

#### **Compensation Commissioner**

Reference is also to be made to returnable form T2.2.13: “Eligibility: Registration with Compensation Commissioner”.

The tenderer is to supply proof of being registered and in good standing with the compensation fund by submitting a valid **Letter of Good Standing** from the Compensation Commissioner.

**Failure to comply will make the tender non-responsive.**

#### **Central Supplier Database (CSD)**

Reference is also to be made to returnable form T2.2.14: “Eligibility: CSD Registration Report”.

The entities (full) **CSD Registration Report**, obtained from the National Treasury Central Supplier Database, is to be included in the tender submission ( <https://secure.csd.gov.za> ).

Separate CSD Registration Reports are required for each entity in a Joint Venture.

#### **CIDB Registration**

Reference is also to be made to returnable form T2.2.15: “Eligibility: Verification of CIDB Registration and Status”.

Registration with the CIDB must be reflected as “Active” at time of tender closing.

Tenderers are to include with their submission a printout of their **CIDB Registration**, obtained from the CIDB website ( <https://registers.cidb.org.za/PublicContractors/ContractorSearch> ).

The Joint Venture Grading Designation Calculator should be used when submitting as a Joint Venture ( <https://registers.cidb.org.za/PublicContractors/JVGradingDesignationCalc> ).

The date of obtaining the CIDB printout(s) is to be indicated on the printout.

### F.3: THE EMPLOYER'S UNDERTAKINGS

- F.3.1.1 Respond to requests from the tenderer:** Replace the words “five working days” with “three working days”.
- F.3.2 Issue addenda:** Add the following paragraph: “Addenda will be published, in electronic format, on the same platform(s) as the Tender Notification (refer to F.1.2).”
- F.3.4 Opening of Tender Submissions:** Tenders will be opened immediately after the closing time for

tenders. The public reading of tenders will take place in the SCM Boardroom, 6<sup>th</sup> Floor, Engineering Unit Building, 166 KE Masinga Road, Durban.

### F.3.11 Evaluation of Tender Offers:

#### Eligibility

Tenders will be checked for compliance with the ELIGIBILITY requirements, as specified in T1.2.2 Clause F.2.1. Tenderers not in compliance will be deemed non-responsive.

#### Preference Point System

The procedure for the evaluation of responsive tenders is **PRICE AND PREFERENCE** in accordance with the Employer's current SCM Policy, the Preferential Procurement Policy Framework Act (5 of 2000), and the Preferential Procurement Policy Framework Act Regulations (2022).

#### Price Points

The **80/20** preference points system will be applied. The Formula used to calculate the **Price Points (max. 80)** will be according to that specified Regulation 4.1.

#### Preference Points

Reference is also to be made to T2.2.7: "MBD 6.1: Preference Points Claim".

The Preference Points (either 20 or 10) will be derived from points allocated/ claimed for **Specific Goals** as indicated in the table(s) below, according to the specified **Goal/ Category Weightings**.

- Ownership Goal  
Goal Weighting: 50%

The tendering entity's Percentage Ownership, in terms of the Ownership Category(s) listed below, is to be used in the determination of the tenderer's claim for Preference Points.

Ownership Categories	Criteria	80/20	90/10
Race: Black (w1)	Equals 0%	0	n/a
	Between 0% and 51%	8	n/a
	Greater or equal to 51% and less than 100%	16	n/a
	Equals 100%	20	n/a
Gender: Female (w2)	Equals 0%	0	n/a
	Between 0% and 51%	8	n/a
	Greater or equal to 51% and less than 100%	16	n/a
	Equals 100%	20	n/a
Disabilities (w3)	Equals 0%	0	n/a
	Between 0% and 51%	8	n/a
	Greater or equal to 51% and less than 100%	16	n/a
	Equals 100%	20	n/a
Maximum Goal Points:		20	n/a

The Weightings of the Ownership Categories will be:

- w1 = 33.33%, w2=33.33%, w3=33.33x% (where: w1 + w2 + w3 = 100%)

Proof of claim as declared on MBD 6.1 (1 or more of the following will be used in verifying the tenderer's status)

- Companies and Intellectual Property Commission registration document (CIPC)
- CSD report.
- B-BBEE Certificate of the tendering entity.
- Consolidated BBBEE Certificate if the tendering entity is a Consortium, Joint Venture, or Trust (Issued by verification agency accredited by the South African Accreditation System).
- Agreement for a Consortium, Joint Venture, or Trust.

- RDP Goal: The promotion of South African owned enterprises  
Goal Weighting:50%

The tendering entity's Address (as stated on the National Treasury Central Supplier Database (CSD) or on the eThekweni Municipality Vendor Portal) is to be used in the determination of the tenderer's claim for Preference Points for this Specific Goal.

Location	80/20	90/10
Not in South Africa	0	n/a
South Africa	5	n/a
Kwa Zulu Natal	10	n/a
eThekweni Municipality	20	n/a
Maximum Goal Points:	20	n/a

Proof of claim as declared on MBD 6.1 (1 or more of the following will be used in verifying the tenderer's status)

- CSD report

**F.3.13 Acceptance of tender offer:** In addition to the requirements of Clause F.3.13 of the Standard Conditions of Tender, tender offers will only be accepted if:

- (a) The tenderer submits a **valid Tax Clearance Certificate OR Tax Compliance Status PIN**, issued by the TCS System of the South African Revenue Services, or has made arrangements to meet outstanding tax obligations.
- (b) The tenderer is **registered, and "Active", with the Construction Industry Development Board**, at time of tender closing, in an appropriate contractor grading designation.
- (c) The tenderer or any of its directors/shareholders is **not listed on the Register of Tender Defaulters** in terms of the Prevention and Combating of Corrupt Activities Act of 2004 as a person prohibited from doing business with the public sector.
- (d) The tenderer has not:
  - Abused the Employer's Supply Chain Management System; or
  - Failed to perform on any previous contract and has been given a written notice to this effect.
- (e) The tenderer has completed the **Compulsory Enterprise Questionnaire** and there are no conflicts of interest which may impact on the tenderer's ability to perform the contract in the best interests of the Employer or potentially compromise the tender process.
- (f) The tenderer is **registered and in good standing with the compensation fund or with a licensed compensation insurer**.
- (g) The Employer is reasonably satisfied that the tenderer has in terms of the Construction Regulations, 2014, issued in terms of the Occupational Health and Safety Act, 1993, the **necessary competencies and resources to carry out the work safely**.

The Municipality does not bind itself to accept the lowest or any tender. It reserves the right to accept the whole or any part of a tender to place orders. Bidders shall not bind the Municipality to any minimum quantity per order. The successful Tenderer (s) shall be bound to provide any quantities stipulated in the specification.

The municipality has a firm intention to proceed with the work, subject to funding being identified. Notwithstanding clause F.1.1.3 of the Standard Conditions of Tender, the municipality reserves the right to award or not award the tender based on the municipalities available budget.

**F.3.15 Complete adjudicator's contract:** Refer to the **General Conditions of Contract** and the **Contract Data**.

**F.3.17 Copies of contract:** The number of paper copies of the signed contract to be provided by the Employer is **ONE (1)**.

Tenderers are to include, with their "hard copy" submission, a memory-stick containing an electronically scanned (300 dpi resolution) Public Document Format (PDF) copy of their complete bid submission. This PDF file should be named using the contract number and the Tenderer's name, eg. "**1H-28518 – Tenderers Name.PDF**". The memory-stick must be labelled with the Tenderer's name and securely fixed to the paper submission.

### T1.2.3 ADDITIONAL CONDITIONS OF TENDER

#### T1.2.3.1 Appeals

In terms of Regulation 49 of the Municipal Supply Chain Management Regulations persons aggrieved by decisions or actions taken by the Municipality, may lodge an appeal within 14 days of the decision or action, in writing to the Municipality. All appeals (clearly setting out the reasons for the appeal) and queries with regard to the decision of award are to be directed to:

The City Manager  
Attention Ms S. Pillay      email: [Simone.Pillay@durban.gov.za](mailto:Simone.Pillay@durban.gov.za)  
P O Box 1394  
DURBAN, 4000

#### T1.2.3.2 Prohibition on awards to persons in the service of the state

Clause 44 of the Supply Chain Management Regulations states that the Municipality or Municipal Entity may not make any award to a person:

- (a) Who is in the service of the State;
- (b) If that person is not a natural person, of which a director, manager, principal shareholder or stakeholder is a person in the service of the state; or
- (c) Who is an advisor or consultant contracted with the municipality or a municipal entity.

Should a contract be awarded, and it is subsequently established that Clause 44 has been breached, the Employer shall have the right to terminate the contract with immediate effect.

#### T1.2.3.3 Code of Conduct and Local Labour

The Tenderers shall make themselves familiar with the requirements of the following policies that are available on web address: <ftp://ftp.durban.gov.za/cesu/StdContractDocs/>:

- Code of Conduct;
- The Use of CLOs and Local Labour.

#### T1.2.3.4 Targeted Procurement

(SCMP Cl.52.21(d) If feasible to contract for a contract above R30m, an organ of state must apply subcontracting to advance designated groups.

(SCMP Cl.52.21(e) Tenders that are between the contract value of R5m and R30m (incl.) must, where feasible, allow for subcontracting in line with the Council approved Economic Empowerment Framework.

Refer to **Economic Empowerment Framework**.

#### T1.2.3.5 Functionality Specification

Functionality Evaluation is not applicable to this tender.

## **PART T2: RETURNABLE DOCUMENTS**

### **T2.1 LIST OF RETURNABLE DOCUMENTS**

#### **T2.1.1 General**

The Tender Submission Documentation must be submitted in its entirety. All forms must be properly completed as required.

The Tenderer is required to complete each and every Schedule and Form listed below to the best of their ability as the evaluation of tenders and the eventual contract will be based on the information provided by the Tenderer. Failure of a Tenderer to complete the Schedules and Forms to the satisfaction of the Employer will inevitably prejudice the tender and may lead to rejection on the grounds that the tender is non-responsive.

#### **T2.1.2 Returnable Schedules, Forms and Certificates**

##### Entity Specific

T2.2.1	Compulsory Enterprise Questionnaire .....	16
T2.2.2	Certificate of Attendance at Clarification Meeting .....	21
T2.2.3	Tax Compliance Status PIN / Tax Clearance Certificate .....	22
T2.2.4	Contractor's Health and Safety Declaration.....	23
T2.2.5	MBD 4: Declaration of Interest .....	25
T2.2.6	MBD 5: Declaration for Procurement Above R10 Million .....	27
T2.2.7	MBD 6.1: Preference Points Claim Form ITO the Preferential Regulations .....	28
T2.2.8	MBD 8: Declaration of Bidder's Past SCM Practices .....	31
T2.2.9	MBD 9: Certificate of Independent Bid Determination .....	33
T2.2.10	Joint Venture Agreements (if applicable) .....	36
T2.2.11	Record of Addenda to Tender Documents (if applicable).....	37

##### Eligibility

T2.2.12	Eligibility: Declaration of Municipal Fees .....	38
T2.2.13	Eligibility: Registration with Compensation Commissioner .....	39
T2.2.14	Eligibility: CSD Registration Report .....	40
T2.2.15	Eligibility: Verification of CIDB Registration and Status .....	41
T2.2.16	Eligibility: Experience of Tenderer .....	42

##### Technical or Functionality Evaluation

T2.2.16	Experience of Tenderer .....	42
T2.2.17	Proposed Organisation and Staffing .....	44
T2.2.18	Key Personnel.....	45
T2.2.19	Experience of Key Personnel.....	46
T2.2.20	Preliminary Programme .....	47
T2.2.21	Construction Approach, Methodology, and Quality Control .....	48
T2.2.22	Schedule of Proposed Subcontractors .....	49
T2.2.23	Plant and Equipment.....	50
T2.2.24	Contractor's Health and Safety Plan .....	51

## **T2.2**    **RETURNABLE SCHEDULES, FORMS, AND CERTIFICATES**

The returnable schedules, forms, and certificates, as listed in T2.1.2, can be found on pages [16](#) to [37](#).

### **NOTE**

The **Form of Offer** (C1.1.1), The **Data to be Provided by Contractor** (C1.2.2.2), and the **Bill of Quantities** (C2.2) are also required to be completed by the tenderer.



**T2.2.1 COMPULSORY ENTERPRISE QUESTIONNAIRE**

<u>Ref</u>	<u>Description</u>	<u>Complete or Circle Applicable</u>
1.1	Name of enterprise	
1.2	Name of enterprise's representative	
1.3	ID Number of enterprise's representative	
1.4	Position enterprise's representative occupies in the enterprise	
1.5	National Treasury Central Supplier Database Registration number	<b>MAAA</b>
1.6	eThekwini Supplier Database: Reference number (PR), if any:	<b>PR</b>
1.7	VAT registration number, if any:	
1.8	CIDB registration number, if any:	
1.9	Department of Labour: Registration number	
1.10	Department of Labour: Letter of Good Standing Certificate number	
<b>2.0</b>	<b>Particulars of sole proprietors and partners in partnerships (attach separate pages if more than 4 partners)</b>	
	<b>Full Name</b>	<b>Identity No.</b>
	<b>Personal income tax No. *</b>	
2.1		
2.2		
2.3		
2.4		
<b>3.0</b>	<b>Particulars of companies and close corporations</b>	
3.1	Company registration number, if applicable:	
3.2	Close corporation number, if applicable:	
3.3	Tax Reference number, if any:	
3.4	South African Revenue Service: Tax Compliance Status PIN:	

**4.0 Record in the service of the state** (Insert on a separate page if necessary)

Indicate by marking the relevant boxes with a cross, if any sole proprietor, partner in a partnership or director, manager, principal shareholder or stakeholder in a company or close corporation is currently or has been within the last 12 months in the service of any of the following:

- |   |  |
|---|--|
| <input type="checkbox"/> a member of any municipal council  | <input type="checkbox"/> a member of any provincial legislature  |
| <input type="checkbox"/> an official of any municipality or municipal entity  | <input type="checkbox"/> a member of an accounting authority of any national or provincial public entity |
| <input type="checkbox"/> a member of the board of directors of any municipal entity   | <input type="checkbox"/> a member of the National Assembly or the National Council of Province           |
| <input type="checkbox"/> an employee of any provincial department, national or provincial public entity or constitutional institution within the meaning of the Public Finance Management Act, 1999 (Act 1 of 1999) | <input type="checkbox"/> an employee of Parliament or a provincial legislature                           |

Name of sole proprietor, partner, director, manager, principal shareholder or stakeholder		
		(tick appropriate column)

		Current	Within last 12 mths

**5.0 Record of spouses, children and parents in the service of the state** (Insert on a separate page if necessary)

Indicate by marking the relevant boxes with a cross, if any spouse, child or parent of a sole proprietor, partner in a partnership or director, manager, principal shareholder or stakeholder in a company or close corporation is currently or has been within the last 12 months in the service of any of the following:

- |   |  |
|---|--|
| <input type="checkbox"/> a member of any municipal council  | <input type="checkbox"/> a member of any provincial legislature  |
| <input type="checkbox"/> an official of any municipality or municipal entity  | <input type="checkbox"/> a member of an accounting authority of any national or provincial public entity |
| <input type="checkbox"/> a member of the board of directors of any municipal entity   | <input type="checkbox"/> a member of the National Assembly or the National Council of Province           |
| <input type="checkbox"/> an employee of any provincial department, national or provincial public entity or constitutional institution within the meaning of the Public Finance Management Act, 1999 (Act 1 of 1999) | <input type="checkbox"/> an employee of Parliament or a provincial legislature                           |

Name of spouse, child or parent		(tick appropriate column)	
		Current	Within last 12 mths

The undersigned, who warrants that he / she is duly authorised to do so on behalf of the enterprise:

- i) authorizes the Employer to verify the tenderers tax clearance status from the South African Revenue Services that it is in order.
- ii) confirms that the neither the name of the enterprise or the name of any partner, manager, director or other person, who wholly or partly exercises or may exercise, control over the enterprise appears on the Register of Tender Defaulters established in terms of the Prevention and Combating of Corrupt Activities Act of 2004.
- iii) confirms that no partner, member, director or other person, who wholly or partly exercises, or may exercise, control over the enterprise appears, has within the last five years been convicted of fraud or corruption.
- iv) confirms that I / we are not associated, linked or involved with any other tendering entities submitting tender offers and have no other relationship with any of the tenderers or those responsible for compiling the scope of work that could cause or be interpreted as a conflict of interest.
- v) confirms that the contents of this questionnaire are within my personal knowledge and are to the best of my belief both true and correct.

NAME (Block Capitals):

Date

SIGNATURE:

**T2.2.2 CERTIFICATE OF ATTENDANCE AT CLARIFICATION MEETING / SITE INSPECTION**

Reference is to be made to Clauses F.2.1(c) and F.2.7 of the Tender Data.

This is to certify that:

(tenderer name):

of (address):

.....  
.....  
.....  
.....

was represented by the person(s) named below at the Clarification Meeting held for all tenderers, the details of which are stated in the Tender Data (F.2.7).

I / We acknowledge that the purpose of the meeting was to acquaint myself / ourselves with the site of the works and / or matters incidental to doing the work specified in the tender documents in order for me / us to take account of everything necessary when compiling our rates and prices included in the tender.

**Particulars of person(s) attending the meeting:**

Name: .....

Name: .....

Signature: .....

Signature: .....

Capacity: .....

Capacity: .....

**Attendance of the above person(s) at the meeting is confirmed by the Employer's Agent's Representative, namely:**

Name: .....

Signature: .....

Date: .....

**T2.2.3 TAX COMPLIANCE STATUS PIN / TAX CLEARANCE CERTIFICATE**

Reference is to be made to Clauses F.2.23 and F.3.13(a) of the Tender Data.

SARS has introduced a new Tax Compliance Status System. Tenderers can submit a Tax Compliance Status PIN (TCS PIN) instead of an original Tax Clearance Certificate. This TCS PIN can be used by third parties to certify the taxpayer's real-time compliance status.

Separate Tax Clearance Certificates / TCS PINs are required for each entity in a Joint Venture.

The TCS PIN(s) are to be entered under item 3.4 on form **T2.1.2.1: Compulsory Enterprise Questionnaire**.

**Tenderers are to include, at the back of their tender submission document, a printout of their Tax Compliance Status PIN (TCS PIN) OR an original Tax Clearance Certificate.**

**Failure to include the required document will make the tender submission non-responsive.**

*I, the undersigned, who warrants that they are authorised to sign on behalf of the Tenderer, confirms that the information contained in this form is within my personal knowledge and is to the best of my belief both true and correct, and that the requested documentation has been included in the tender submission.*

NAME (Block Capitals): \_\_\_\_\_

Date

SIGNATURE: \_\_\_\_\_

**T2.2.4 CONTRACTOR'S HEALTH AND SAFETY DECLARATION**

If Functionality is applicable as part of tender evaluation, reference is to be made to Clause F3.11.9 of the of the Conditions of Tender.

Reference is to be made to Clauses F.2.1(e) and F.2.23 of the Tender Data.

In terms of Clause 5(1)(h) of the OHSA 1993 Construction Regulations 2014 (referred to as "the Regulations" hereafter), a Principal Contractor may only be appointed to perform construction work if the Client is satisfied that the Principal Contractor has the necessary competencies and resources to carry out the work safely in accordance with the Occupational Health and Safety Act No 85 of 1993 and the OHSA 1993 Construction Regulations 2014.

To that effect, a person duly authorised by the tenderer, must complete and sign the declaration hereafter in detail.

Declaration by Tenderer

- 1 I, the undersigned, hereby declare and confirm that I am fully conversant with the Occupational Health and Safety Act No 85 of 1993 (as amended by the Occupational Health and Safety Amendment Act No 181 of 1993), and the OHSA 1993 Construction Regulations 2014.
- 2 I hereby declare that my company has the competence and the necessary resources to safely carry out the construction work under this contract in compliance with the Construction Regulations and the Employer's Health and Safety Specifications.
- 3 I propose to achieve compliance with the Regulations by one of the following (Tenderers are to Circle Applicable - Yes or No):

Circle Applicable	
Yes	NO
Yes	NO
YES	NO

- (a) From my own competent resources as detailed in 4(a) hereafter.
- (b) From my own resources still to be appointed or trained until competency is achieved, as detailed in 4(b) hereafter:
- (c) From outside sources by appointment of competent specialist Subcontractors as detailed in 4(c) hereafter:

4 Details of resources I propose:

*(Note: Competent resources shall include safety personnel such as a construction supervisor and construction safety officer as defined in Regulation 8, and competent persons as defined in Regulations 9, 10, 11, 12, 13, 14, 16, 17, 20, 21, 22, 23(1), 24, 25, 26, 27, 28 and 29, as applicable).*

- (a) Details of the competent and qualified key persons from my company's own resources, who will form part of the contract team:

NAMES OF COMPETENT PERSONS	POSITIONS TO BE FILLED BY COMPETENT PERSONS



(b) Details of training of persons from my company's own resources (or to be hired) who still have to be trained to achieve the necessary competency:

- (i) By whom will training be provided?
- (ii) When will training be undertaken?
- (iii) Positions to be filled by persons to be trained or hired:


(c) Details of competent resources to be appointed as subcontractors if competent persons cannot be supplied from own company:

- Name of proposed subcontractor:
- Qualifications or details of competency of the subcontractor:


- 5 I, the undersigned, hereby undertake, if this tender is accepted, to provide, before commencement of the works under the contract, a suitable and sufficiently documented Health and Safety Plan in accordance with Regulation 7(1) of the Construction Regulations, which plan shall be subject to approval by the Client.
- 6 I, the undersigned, confirm that copies of this company's approved Health and Safety Plan, the Client's Safety Specifications as well as the OHS 1993 Construction Regulations 2014 will be provided on site and will at all times be available for inspection by the Principal Contractor's personnel, the Client's personnel, the Employer's Agent, visitors, and officials and inspectors of the Department of Labour.
- 7 I, the undersigned, hereby confirm that adequate provision has been made in the tendered rates and prices in the Bill of Quantities to cover the cost of all resources, actions, training and all health and safety measures envisaged in the OHS 1993 Construction Regulations 2014, and that I will be liable for any penalties that may be applied by the Client in terms of the said Regulations (Regulation 33) for failure on the Principal Contractor's part to comply with the provisions of the Act and the Regulations.
- 8 I, the undersigned, agree that failure to complete and execute this declaration to the satisfaction of the Client will mean that this company is unable to comply with the requirements of the OHS 1993 Construction Regulations (2014) and accept that this tender will be prejudiced and may be rejected at the discretion of the Client.

*I, the undersigned, who warrants that they are authorised to sign on behalf of the Tenderer, confirms that the information contained in this form is within my personal knowledge and is to the best of my belief both true and correct.*

NAME (Block Capitals): \_\_\_\_\_

Date

SIGNATURE: \_\_\_\_\_

**T2.2.5 MBD 4: DECLARATION OF INTEREST**

MSCM Regulations: **“in the service of the state”** means to be:

- (a) a member of:
  - (i) any municipal council.
  - (ii) any provincial legislature.
  - (iii) the national Assembly or the national Council of provinces.
- (b) a member of the board of directors of any municipal enterprise.
- (c) an official of any municipality or municipal enterprise.
- (d) an employee of any national or provincial department, national or provincial public enterprise or constitutional institution within the meaning of the Public Finance Management Act, 1999 (Act No.1 of 1999).
- (e) a member of the accounting authority of any national or provincial public enterprise.
- (f) an employee of Parliament or a provincial legislature.

**“Shareholder”** means a person who owns shares in the company and is actively involved in the management of the company or business and exercises control over the company.

- 1 No bid will be accepted from persons **in the service of the state**<sup>1</sup>.
- 2 Any person, having a kinship with persons **in the service of the state**, including a blood relationship, may make an offer or offers in terms of this invitation to bid. In view of possible allegations of favouritism, should the resulting bid, or part thereof, be awarded to persons connected with or related to **persons in service of the state**, it is required that the bidder or their authorised representative declare their position in relation to the evaluating/adjudicating authority and/or take an oath declaring his/her interest.
- 3 In order to give effect to the above, the following questionnaire must be completed and submitted with the bid.

3.1 Name of enterprise	Complete T2.1.2.1 Item 1.1
Name of enterprise’s representative	Complete T2.1.2.1 Item 1.2
3.2 ID Number of enterprise’s representative	Complete T2.1.2.1 Item 1.3
3.3 Position enterprise’s representative occupies in the enterprise	Complete T2.1.2.1 Item 1.4
3.4 Company Registration number	Complete T2.1.2.1 Item 3.1 or 3.2
3.5 Tax Reference number	Complete T2.1.2.1 Item 3.3
3.6 VAT registration number	Complete T2.1.2.1 Item 1.7

3.7 The names of all directors / trustees / shareholders / members / sole proprietors / partners in partnerships, their individual identity numbers and state employee numbers must be indicated in paragraph 4 below. In the case of a joint venture, information in respect of each partnering enterprise must be completed and submitted.

Circle Applicable			
3.8 Are you presently in the service of the state?	<table border="1" style="display: inline-table;"> <tr> <td style="width: 50%;">YES</td> <td style="width: 50%;">NO</td> </tr> </table>	YES	NO
YES	NO		
If yes, furnish particulars: .....			
.....			
3.9 Have you been in the service of the state for the past twelve months?			
<table border="1" style="display: inline-table;"> <tr> <td style="width: 50%;">YES</td> <td style="width: 50%;">NO</td> </tr> </table>		YES	NO
YES	NO		
If yes, furnish particulars: .....			
.....			

3.10 Do you have any relationship (family, friend, other) with persons in the service of the state and who may be involved with the evaluation and or adjudication of this bid?

YES	NO
-----	----

If yes, furnish particulars: .....

3.11 Are you, aware of any relationship (family, friend, other) between any other bidder and any persons in the service of the state who may be involved with the evaluation and or adjudication of this bid?

YES	NO
-----	----

If yes, furnish particulars: .....

3.12 Are any of the company's directors, trustees, managers, principle shareholders or stakeholders in service of the state?

YES	NO
-----	----

If yes, furnish particulars: .....

3.13 Are any spouse, child or parent of the company's directors, trustees, managers, principle shareholders or stakeholders in service of the state?

YES	NO
-----	----

If yes, furnish particulars: .....

3.14 Do you or any of the directors, trustees, managers, principle shareholders, or stakeholders of this company have any interest in any other related companies or business whether or not they are bidding for this contract ?

YES	NO
-----	----

If yes, furnish particulars: .....

4 The names of all directors / trustees / shareholders / members / sole proprietors / partners in partnerships, their individual identity numbers and state employee numbers must be indicated below. In the case of a joint venture, information in respect of each partnering enterprise must be completed and submitted

Full Name	Identity No.	State Employee No.	Personal income tax No.
Use additional pages if necessary			

*I, the undersigned, who warrants that they are authorised to sign on behalf of the Tenderer, confirms that the information contained in this form is within my personal knowledge and is to the best of my belief both true and correct.*

NAME (Block Capitals): .....

Date

SIGNATURE: .....

**T2.2.6 MBD 5: DECLARATION FOR PROCUREMENT ABOVE R10 MILLION  
(ALL APPLICABLE TAXES INCLUDED)**

For all procurement expected to exceed R10 million (all applicable taxes included), bidders must complete the following questionnaire.

	Circle Applicable	
1.0 Are you by law required to prepare annual financial statements for auditing?	YES	NO
1.1 <b>If YES, submit audited annual financial statements for the past three years or since the date of establishment if established during the past three years.</b>		
2.0 Do you have any outstanding undisputed commitments for municipal services towards any municipality for more than three months or any other service provider in respect of which payment is overdue for more than 30 days?	YES	NO
2.1 If NO, this serves to certify that the bidder has no undisputed commitments for municipal services towards any municipality for more than three months or other service provider in respect of which payment is overdue for more than 30 days.		
2.2 If YES, provide particulars. ..... .....		
3.0 Has any contract been awarded to you by an organ of state during the past five years, including particulars of any material non-compliance or dispute concerning the execution of such contract?	YES	NO
3.1 If YES, provide particulars. ..... .....		
4.0 Will any portion of goods or services be sourced from outside the Republic, and, if so, what portion and whether any portion of payment from the municipality / municipal entity is expected to be transferred out of the Republic?	YES	NO
4.1 If YES, provide particulars. ..... .....		

**If required by 1.1 above, tenderers are to include, at the back of their tender submission document, a printout of their audited annual financial statements.**

*I, the undersigned, who warrants that they are authorised to sign on behalf of the Tenderer, confirms that the information contained in this form is within my personal knowledge and is to the best of my belief both true and correct, and, if required, that the requested documentation has been included in the tender submission.*

NAME (Block Capitals): ..... Date

SIGNATURE: .....

---

**T2.2.7 MBD 6.1: PREFERENCE POINTS CLAIM**  
**In terms of THE PREFERENTIAL PROCUREMENT REGULATIONS (2022)****Reference is to be made to Clause F.3.11 of the Tender Data.**

This preference form must form part of all tenders invited. It contains general information and serves as a claim form for preference points for specific goals.

NB: BEFORE COMPLETING THIS FORM, TENDERERS MUST STUDY THE GENERAL CONDITIONS, DEFINITIONS AND DIRECTIVES APPLICABLE IN RESPECT OF THE TENDER AND PREFERENTIAL PROCUREMENT REGULATIONS, 2022

**1.0 GENERAL CONDITIONS**

1.1 The following preference point systems are applicable to invitations to tender:

- the 80/20 system for requirements with a Rand value of up to R50 000 000 (all applicable taxes included).
- the 90/10 system for requirements with a Rand value above R50 000 000 (all applicable taxes included).

1.2 The applicable preference point system for this tender is the 80/20 preference point system.

1.3 Preference Points for this tender shall be awarded for:

- Price and Specific Goals: 80 (price) and 20 (specific goals), in terms of 1.2 above.
- The total Preference Points, for Price and Specific Goals, is 100.

1.4 Failure on the part of the tenderer to submit the required proof or documentation, in terms of the requirements in the Conditions of Tender for claiming specific goal preference points, will be interpreted that preference points for specific goals are not claimed.

1.5 The Municipality reserves the right to require of a tenderer, either before a tender is adjudicated or at any time subsequently, to substantiate any claim in regard of preferences, in any manner required by the Municipality.

**2.0 DEFINITIONS**

2.1 "tender" means a written offer in the form determined by an organ of state in response to an invitation to provide goods or services through price quotations, competitive tendering process or any other method envisaged in legislation.

2.2 "price" means an amount of money tendered for goods or services and includes all applicable taxes less all unconditional discounts.

2.3 "rand value" means the total estimated value of a contract in Rand, calculated at the time of bid invitation, and includes all applicable taxes.

2.4 "tender for income-generating contracts" means a written offer in the form determined by Municipality in response to an invitation for the origination of income-generating contracts through any method envisaged in legislation that will result in a legal agreement between the Municipality and a third party that produces revenue for the Municipality, and includes, but is not limited to, leasing and disposal of assets and concession contracts, excluding direct sales and disposal of assets through public auctions.

2.5 "the Act" means the Preferential Procurement Policy Framework Act, 2000 (Act No. 5 of 2000).

### 3.0 FORMULA FOR CALCULATION OF PREFERENCE PRICE POINTS

#### 3.1 PROCUREMENT OF GOODS AND SERVICES

POINTS AWARDED FOR PRICE: A maximum of 80 points is allocated for price on the following basis:

80 / 20 Points System

$$Ps = 80 \left( 1 - \frac{Pt - Pmin}{Pmin} \right)$$

Where:

Ps = Points scored for price of tender under consideration

Pt = Price of tender under consideration

Pmin = Price of lowest acceptable tender

#### 4.0 POINTS AWARDED FOR SPECIFIC GOALS

- 4.1 In terms of Regulation 4(2); 5(2); 6(2) and 7(2) of the Preferential Procurement Regulations, preference points must be awarded for specific goals stated in the tender. For the purposes of this tender the tenderer will be allocated points based on the goal(s) stated in Table 1 below, as supported by proof/ documentation stated in the Conditions of Tender:
- 4.2 In cases where organs of state intend to use Regulation 3(2) of the Regulations, which states that if it is unclear whether the 80/20 or 90/10 preference point system applies, an organ of state must, in the tender documents, stipulate in the case of:
- (a) an invitation for tender for income-generating contracts, that either the 80/20 or 90/10 preference point system will apply and that the highest acceptable tender will be used to determine the applicable preference point system, or
  - (b) any other invitation for tender, that either the 80/20 or 90/10 preference point system will apply and that the lowest acceptable tender will be used to determine the applicable preference point system,
- then the organ of state must indicate the points allocated for specific goals for both the 90/10 and 80/20 preference point system.

TABLE 1: Specific Goals for the tender and maximum points for each goal are indicated per the table below.

Tenderers are to indicate their points claim for each of the Specific Goals in the shaded blocks.

The Specific Goals to be allocated points in terms of this tender	Maximum Number of points ALLOCATED (80/20 system)	Maximum Number of points ALLOCATED (90/10 system)	Number of points CLAIMED (80/20 system)	Number of points CLAIMED (90/10 system)
Ownership Goal: Race (black)	3.33	n/a		n/a
Ownership Goal: Gender (female)	3.33	n/a		n/a
Ownership Goal: Disabilities	3.33	n/a		n/a
RDP Goal: The promotion of South African owned enterprises.	10	n/a		n/a
Total CLAIMED Points (20 Maximum)				n/a

I, the undersigned, who warrants that they are authorised to sign on behalf of the Tenderer, certify that the points claimed, based on the specific goals as specified in the tender, qualifies the tendering entity for the preference(s) shown.

I acknowledge that:

- 1) The information furnished is true and correct.
- 2) The preference points claimed are in accordance with the General Conditions as indicated in paragraph 1 of this form.
- 3) In the event of a contract being awarded as a result of points claimed as shown in paragraphs 1.4 and 4.2, the contractor may be required to furnish documentary proof to the satisfaction of the organ of state that the claims are correct.
- 4) If the specific goals have been claimed or obtained on a fraudulent basis, or any of the conditions of contract have not been fulfilled, the organ of state may, in addition to any other remedy it may have:
  - (a) disqualify the person from the tendering process.
  - (b) recover costs, losses or damages it has incurred or suffered as a result of that person’s conduct.
  - (c) cancel the contract and claim any damages which it has suffered as a result of having to make less favourable arrangements due to such cancellation.
  - (d) recommend that the tenderer or contractor, its shareholders and directors, or only the shareholders and directors who acted on a fraudulent basis, be restricted from obtaining business from any organ of state for a period not exceeding 10 years, after the *audi alteram partem* (hear the other side) rule has been applied; and
  - (e) forward the matter for criminal prosecution, if deemed necessary.

NAME (Block Capitals):

Date

SIGNATURE:

**T2.2.8 MBD 8: DECLARATION OF BIDDER'S PAST SUPPLY CHAIN MANAGEMENT PRACTICES**

- 1.0 This Municipal Bidding Document must form part of all bids invited.
- 2.0 It serves as a declaration to be used by municipalities and municipal entities in ensuring that when goods and services are being procured, all reasonable steps are taken to combat the abuse of the supply chain management system.
- 3.0 The bid of any bidder may be rejected if that bidder, or any of its directors have:
  - a) abused the municipal entity's supply chain management system or committed any improper conduct in relation to such system.
  - b) been convicted for fraud or corruption during the past five years.
  - c) wilfully neglected, reneged on or failed to comply with any government, municipal or other public sector contract during the past five years.
  - d) been listed in the Register for Tender Defaulters in terms of section 29 of the Prevention and Combating of Corrupt Activities Act (No 12 of 2004).
- 4.0 In order to give effect to the above, the following questions must be completed and submitted with the bid.

4.1 Is the bidder or any of its directors listed on the National Treasury's Database of Restricted Suppliers as companies or persons prohibited from doing business with the public sector?

(Companies or persons who are listed on this Database were informed in writing of this restriction by the Accounting Officer / Authority of the institution that imposed the restriction after the audi alteram partem rule was applied.)

The Database of Restricted Suppliers now resides on the National Treasury's website ([www.treasury.gov.za](http://www.treasury.gov.za)) and can be accessed by clicking on its link at the bottom of the home page.

Circle Applicable	
YES	NO

4.1.1 If YES, provide particulars.

.....

.....

4.2 Is the bidder or any of its directors listed on the Register for Tender Defaulters in terms of section 29 of the Prevention and Combating of Corrupt Activities Act (No 12 of 2004)?

The Register for Tender Defaulters can be accessed on the National Treasury's website ([www.treasury.gov.za](http://www.treasury.gov.za)) by clicking on its link at the bottom of the home page.

YES	NO
-----	----

4.2.1 If YES, provide particulars.

.....

.....

4.3 Was the bidder or any of its directors convicted by a court of law (including a court of law outside the Republic of South Africa) for fraud or corruption during the past five years?

YES	NO
-----	----

4.3.1 If YES, provide particulars.

.....

.....



4.4 Does the bidder or any of its directors owe any municipal rates and taxes or municipal charges to the municipality / municipal entity, or to any other municipality / municipal entity, that is in arrears for more than three months?

YES	NO
-----	----

4.4.1 If YES, provide particulars.

.....

.....

4.5 Was any contract between the bidder and the municipality / municipal entity or any other organ of state terminated during the past five years on account of failure to perform on or comply with the contract?

YES	NO
-----	----

4.5.1 If YES, provide particulars.

.....

.....

*I, the undersigned, who warrants that they are authorised to sign on behalf of the Tenderer, confirms that the information contained in this form is within my personal knowledge and is to the best of my belief both true and correct.*

*I accept that, in addition to cancellation of a contract, action may be taken against me should this declaration prove to be false.*

NAME (Block Capitals):

Date

.....

SIGNATURE:

.....

.....

**T2.2.9 MBD 9: CERTIFICATE OF INDEPENDENT BID DETERMINATION****NOTES**

- <sup>1</sup> Includes price quotations, advertised competitive bids, limited bids and proposals.
- <sup>2</sup> Bid rigging (or collusive bidding) occurs when businesses, that would otherwise be expected to compete, secretly conspire to raise prices or lower the quality of goods and / or services for purchasers who wish to acquire goods and / or services through a bidding process. Bid rigging is, therefore, an agreement between competitors not to compete.
- <sup>3</sup> Joint venture or Consortium means an association of persons for the purpose of combining their expertise, property, capital, efforts, skill and knowledge in an activity for the execution of a contract.

- 1.0 This Municipal Bidding Document (MBD) must form part of all bids<sup>1</sup> invited.
- 2.0 Section 4 (1) (b) (iii) of the Competition Act No. 89 of 1998, as amended, prohibits an agreement between, or concerted practice by, firms, or a decision by an association of firms, if it is between parties in a horizontal relationship and if it involves collusive bidding (or bid rigging).<sup>2</sup> Collusive bidding is a *pe se* prohibition meaning that it cannot be justified under any grounds.
- 3.0 Municipal Supply Regulation 38 (1) prescribes that a supply chain management policy must provide measures for the combating of abuse of the supply chain management system, and must enable the accounting officer, among others, to:
- a. takes all reasonable steps to prevent such abuse.
  - b. rejects the bid of any bidder if that bidder or any of its directors has abused the supply chain management system of the municipality or municipal entity or has committed any improper conduct in relation to such system; and
  - c. cancels a contract awarded to a person if the person committed any corrupt or fraudulent act during the bidding process or the execution of the contract.
- 4.0 This MBD serves as a certificate of declaration that would be used by institutions to ensure that, when bids are considered, reasonable steps are taken to prevent any form of bid rigging.
- 5.0 In order to give effect to the above, the attached Certificate of Bid Determination (MBD 9) must be completed and submitted with the bid.

CERTIFICATE OF INDEPENDENT BID DETERMINATION

I, the undersigned, in submitting the accompanying bid:

-----  
(Bid Number and Description)

in response to the invitation for the bid made by:

-----  
(Name of Municipality / Municipal Entity)

do hereby make the following statements that I certify to be true and complete in every respect.

I certify, on behalf of:

-----  
(Name of Bidder)

that:

1. I have read, and I understand the contents of this Certificate.
2. I understand that the accompanying bid will be disqualified if this Certificate is found not to be true and complete in every respect.
3. I am authorized by the bidder to sign this Certificate, and to submit the accompanying bid, on behalf of the bidder;
4. Each person whose signature appears on the accompanying bid has been authorized by the bidder to determine the terms of, and to sign, the bid, on behalf of the bidder;
5. For the purposes of this Certificate and the accompanying bid, I understand that the word "competitor" shall include any individual or organization, other than the bidder, whether or not affiliated with the bidder, who:
  - (a) has been requested to submit a bid in response to this bid invitation.
  - (b) could potentially submit a bid in response to this bid invitation, based on their qualifications, abilities or experience.
  - (c) provides the same goods and services as the bidder and/or is in the same line of business as the bidder.
6. The bidder has arrived at the accompanying bid independently from, and without consultation, communication, agreement, or arrangement with any competitor. However, communication between partners in a joint venture or consortium<sup>3</sup> will not be construed as collusive bidding.

- 
7. In particular, without limiting the generality of paragraphs 6 above, there has been no consultation, communication, agreement or arrangement with any competitor regarding:
    - (a) prices.
    - (b) geographical area where product or service will be rendered (market allocation).
    - (c) methods, factors or formulas used to calculate prices.
    - (d) the intention or decision to submit or not to submit, a bid.
    - (e) the submission of a bid which does not meet the specifications and conditions of the bid.
    - (f) bidding with the intention not to win the bid.
  
  8. In addition, there have been no consultations, communications, agreements, or arrangements with any competitor regarding the quality, quantity, specifications and conditions or delivery particulars of the products or services to which this bids invitation relates.
  
  9. The terms of the accompanying bid have not been, and will not be, disclosed by the bidder, directly or indirectly, to any competitor, prior to the date and time of the official bid opening or of the awarding of the contract.
  
  10. I am aware that, in addition and without prejudice to any other remedy provided to combat any restrictive practices related to bids and contracts, bids that are suspicious will be reported to the Competition Commission for investigation and possible imposition of administrative penalties in terms of section 59 of the Competition Act No 89 of 1998 and or may be reported to the National Prosecuting Authority (NPA) for criminal investigation and or may be restricted from conducting business with the public sector for a period not exceeding ten (10) years in terms of the Prevention and Combating of Corrupt Activities Act No 12 of 2004 or any other applicable legislation.

NAME (Block Capitals):

Date

SIGNATURE:

**T2.2.10 JOINT VENTURES AGREEMENTS**

Joint Venture agreement and Power of Attorney Agreements to be attached here (if applicable).

**T2.2.11 RECORD OF ADDENDA TO TENDER DOCUMENTS**

I / We confirm that the following communications received from the Employer or his representative before the date of submission of this tender offer, amending the tender documents, have been taken into account in this tender offer.

ADD.No	DATE	TITLE OR DETAILS
1		
2		
3		
4		
5		
6		
7		
8		
9		
10		

*I, the undersigned, who warrants that they are authorised to sign on behalf of the Tenderer, confirms that the information contained in this form is within my personal knowledge and is to the best of my belief both true and correct.*

*It is also confirmed that the requirements, as stated on the Addenda, have been complied with.*

NAME (Block Capitals): \_\_\_\_\_

Date

SIGNATURE: \_\_\_\_\_

\_\_\_\_\_

**T2.2.12 ELIGIBILITY: DECLARATION OF MUNICIPAL FEES**

Reference is to be made to Clause F.2.1(f)(ii) of the Tender Data.

I, the undersigned, do hereby declare that the Municipal fees of:

.....  
 (Full name of Company / Close Corporation / partnership / sole proprietary/Joint Venture)

(Hereinafter referred to as the TENDERER) are, as at the date hereunder, fully paid or an Acknowledgement of Debt has been concluded with the Municipality to pay the said charges in instalments.

The following account details relate to property of the said TENDERER:

<u>Account</u>	<u>Account Number:</u> to be completed by tenderer
Consolidated Account	
Electricity	
Water	
Rates	
JSB Levies	
Other	

I acknowledge that should the aforesaid Municipal charges fall into arrears, the Municipality may take such remedial action as is required, including termination of any contract, and any payments due to the Contractor by the Municipality shall be first set off against such arrears.

- Where the tenderer’s place of business or business interests are outside the jurisdiction of eThekweni municipality, a copy of the accounts/ agreements from the relevant municipality are to be provided.
- Where the tenderer’s Municipal Accounts are part of their lease agreement, then a copy of the agreement, or an official letter to that effect, is to be provided.

**Tenderers are to include, at the back of their tender submission document, a printout of the above account's and or agreements signed with the municipality.**

**Failure to include the required document will make the tender submission non-responsive.**

*I, the undersigned, who warrants that they are authorised to sign on behalf of the Tenderer, confirms that the information contained in this form is within my personal knowledge and is to the best of my belief both true and correct, and that the requested documentation has been included in the tender submission.*

NAME (Block Capitals):

Date

SIGNATURE:

\_\_\_\_\_

.....

.....

**T2.2.13 ELIGIBILITY: REGISTRATION WITH COMPENSATION COMMISSIONER**

Reference is to be made to Clause F.2.1(f)(i) of the Tender Data.

The Occupational Injuries and Diseases Act (130 of 1993 as amended) (the Act) refers. A summary of the pertinent Clauses is listed below. The act is to be referenced for the full text of the clauses.

**Clause 80: Employer to register with commissioner and furnish him with particulars**

The Act requires that an Employer carrying out business in the Republic to register with the Compensation Commissioner. Any person who fails to comply with the provisions of this clause is guilty of an offence.

**Clause 82: Employer to furnish returns of earnings**

The Act requires an Employer to furnish the commissioner with a return showing:

- The amount of earnings paid by him to his employees.
- Any further information as may be prescribed or as the commissioner may require.

Any Employer who fails to comply with the provisions of this clause is guilty of an offence.

**Clause 86: Assessment to be paid by an employer to commissioner**

The Act states that an Employer will receive notices of assessment from the commissioner. The Employer must pay the commissioner the assessment amount on the notices.

**Clause 89: Mandators and contractors**

The Act requires a contractor (a person with a contract with a mandator) to register as an Employer in accordance with the provisions of the Act and pay the necessary assessments. Failing registration or payment of assessments, the mandator is required to pay the assessments in respect of the employees of the contractor. The mandator is allowed to recover the assessment amounts paid from the contractor.

The Department of labour issues contractors with a **Letter of Good Standing** if the contractor has complied with the requirement(s) of the Act and is in "good standing" with the Compensation Fund. Employers can check the validity of such Letters of Good Standing on the internet (<https://cfoonline.labour.gov.za/VerifyLOGS> ).

**Tenderers are to include, at the back of their tender submission document, a printout of their most recent Letter of Good Standing from the Department of Labour.**

**Failure to include the required document will make the tender submission non-responsive.**

*I, the undersigned, who warrants that they are authorised to sign on behalf of the Tenderer, confirms that the information contained in this form is within my personal knowledge and is to the best of my belief both true and correct, and that the requested documentation has been included in the tender submission.*

NAME (Block Capitals): \_\_\_\_\_

Date

SIGNATURE: \_\_\_\_\_



**T2.2.14 ELIGIBILITY: CSD REGISTRATION REPORT**

Reference is to be made to Clauses F.2.1(e) and F.2.23 of the Tender Data.

The Conditions of Tender, Clause F.2.1: Eligibility, requires a tenderer to be registered, at the time of tender closing, on the **National Treasury Central Supplier Database (CSD)** as a service provider.

CSD Registration Reports can be obtained from the National Treasury’s CSD website at <https://secure.csd.gov.za/Account/Login>.

The date of obtaining the printout is to be indicated on the printout.

The following is an example of the beginning of the printout obtained from the above website.

SUPPLIER IDENTIFICATION			
Supplier number		Have Bank Account	
Is supplier active?		Total annual turnover	
Supplier type		Financial year start date	
Supplier sub-type		Registration date	
Legal name		Created by	
Trading name		Created date	
Identification type		Edit by	
Government breakdown		Edit date	
Business status		Restricted Supplier	
Country of origin		Restriction Last Verification Date	
South African company/CC registration number			

**Tenderers are to include, at the back of their tender submission document, a printout of their (full) CSD Registration Report.**

*I, the undersigned, who warrants that they are authorised to sign on behalf of the Tenderer, confirms that the information contained in this form is within my personal knowledge and is to the best of my belief both true and correct, and that the requested documentation has been included in the tender submission.*

NAME (Block Capitals): \_\_\_\_\_

Date

SIGNATURE: \_\_\_\_\_

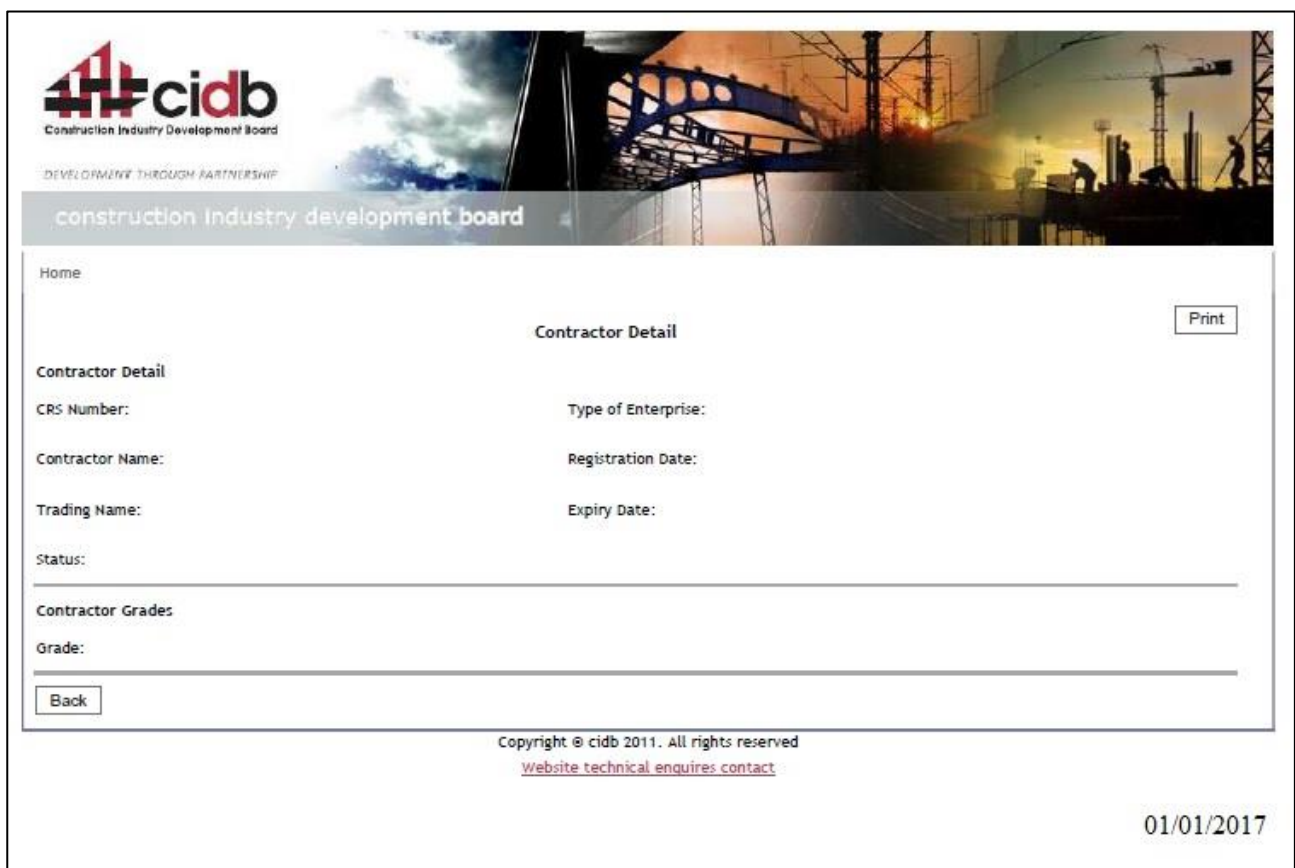
**T2.2.15 ELIGIBILITY: VERIFICATION OF CIDB REGISTRATION AND STATUS**

Reference is to be made to Clause F.2.1.1 and F.2.23 of the Tender Data.

The Conditions of Tender, **Clause F.2.1.1: Eligibility**, requires a tenderer to be registered, as “Active”, with the CIDB (at time of tender closing), in a contractor grading designation equal to or higher than a contractor grading designation determined in accordance with the sum tendered, or a value determined in accordance with Regulation 25 (1B) or 25(7A) of the Construction Industry Development Regulations. The required class of construction work is specified in Clause F.2.1.1.

CIDB Registrations can be obtained from the CIDB website at <https://registers.cidb.org.za/PublicContractors/ContractorSearch>. The date of obtaining the printout is to be indicated on the printout.

The following is an example of the beginning of the printout obtained from the above website.



**Tenderers are to include, at the back of their tender submission document, a printout of their registration with the CIDB.**

*I, the undersigned, who warrants that they are authorised to sign on behalf of the Tenderer, confirms that the information contained in this form is within my personal knowledge and is to the best of my belief both true and correct, and that the requested documentation has been included in the tender submission.*

NAME (Block Capitals): \_\_\_\_\_ Date \_\_\_\_\_

SIGNATURE: \_\_\_\_\_

**T2.2.16 ELIGIBILITY: EXPERIENCE OF TENDERER**

Reference is to be made to Clause F.2.1.2 of the Tender Data.

**This form is to be copied and used for each submission of experience, as may be required.**

Where options are provided ( ), only one (1) selected option should be clearly marked with an " X ".

<b>Tenderer's CIDB Grade:</b>	1*	2*	3*	4*	5*	6*	7*	8*	9*	Experience as a:	Sub-Contractor*	Main Contractor*	
<b>Client / Employer:</b>	Entity Name:												
	Contact Name:												
	Contact Tel:										-	-	
	Contact Cell:										-	-	
	Contact email / other:												
<b>Client OR Main Contractor's Details</b> <i>Should the Employer's reasonable attempts to make contact, to verify the information provided, fail (for whatever reason) this experience submission will be considered invalid.</i>	Entity Name:												
	Contact Name:												
	Contact Tel:										-	-	
	Contact Cell:										-	-	
	Contact email / other:												
<b>Contract Details</b>	Contract Number:												
	Contract Title:												
	Has this Contract been completed?										Y*	N*	
											Commencement Date:	d d m m 2 0 y y	
										Completion Date (if applicable):		d d m m 2 0 y y	
Tendered Value (Contract Sum) OR Sub-Contract Value:										R	Final Contract Price OR Final Value of Sub-Contract:		R

<b>Contract Scope-of-Work</b> (Description of Works components)	If available in hard copy, the Scope-of-Work can be attached. Only include the Scope-of-Work (contract description). <u>The Specification is not required.</u>

**In addition to the Scope-of-Work (entered above or attached) the following documentation / information is required to be attached to the back of this form.**

Contractor Type and Contract Status	Proof of Sub-Contract Agreement	Letter of Award OR Form of Offer & Acceptance	Most recent Payment Certificate, OR most recent INVOICE, with Quantities summary	Final Payment Certificate, OR most recent INVOICE, with Quantities summary	Completion Certificate
Current Contract as Sub-Contractor	X		X		
Completed Contract as Sub-Contractor	X			X	
Current Contract as Main Contractor		X	X		
Completed Contract as Main Contractor		X		X	X

**Failure to submit this returnable form, and provide the above supporting documentation/ information, for each submission of experience, will invalidate that experience submission**

*I, the undersigned, who warrants that they are authorised to sign on behalf of the Tenderer, confirms that the information contained in this form is within my personal knowledge and is to the best of my belief both true and correct, and that the requested documentation has been included in the tender submission.*

NAME (Block Capitals): \_\_\_\_\_ Date \_\_\_\_\_

SIGNATURE: \_\_\_\_\_

**T2.2.16 EXPERIENCE OF TENDERER**

The following is a statement of works of similar nature (in relation to the scope of works) recently (within the past 7 years) executed by me / ourselves.

Tenderers are to submit copies of signed completion certificates for all projects submitted.

EMPLOYER: CONTACT PERSON AND TELEPHONE NUMBER	CONSULTING ENGINEER: CONTACT PERSON AND TELEPHONE NUMBER	NATURE OF WORK	VALUE OF WORK (inclusive of VAT)	DATE COMPLETED

**Attach additional pages if more space is required**

*I, the undersigned, who warrants that they are authorised to sign on behalf of the Tenderer, confirms that the information contained in this form is within my personal knowledge and is to the best of my belief both true and correct.*

NAME (Block Capitals): \_\_\_\_\_

Date

SIGNATURE: \_\_\_\_\_

\_\_\_\_\_

-----

**T2.2.17 PROPOSED ORGANISATION and STAFFING**

The tenderer should propose the structure and composition of their team i.e. the main disciplines involved, the key staff member / expert responsible for each discipline, and the proposed technical and support staff and site staff.

The roles and responsibilities of each key staff member / expert should be set out as job descriptions. In the case of an association / joint venture / consortium, it should, indicate how the duties and responsibilities are to be shared.

The tenderer must attach his / her organization and staffing proposals to this page. (this is to include both the on-site and off-site staffing resources used for this project)

In addition to any lists, this information should also be shown in an organogram format (flow chart) clearly indicating the staff hierarchy and reporting lines, again for on- and off-site resources.

The undersigned, who warrants that he / she is duly authorised to do so on behalf of the enterprise, confirms that the contents of this schedule are within my personal knowledge and are to the best of my belief both true and correct.

*I, the undersigned, who warrants that they are authorised to sign on behalf of the Tenderer, confirms that the information contained in this form is within my personal knowledge and is to the best of my belief both true and correct.*

NAME (Block Capitals): \_\_\_\_\_

Date

SIGNATURE: \_\_\_\_\_

**T2.2.18**    **KEY PERSONNEL**

The Tenderer shall list below the personnel which he intends to utilize on the Works, including key personnel (Contract’s Manager, Site Agent, and Foremen) which may have to be brought in from outside if not available locally.

CATEGORY OF EMPLOYEE	NUMBER OF PERSONS	
	KEY PERSONNEL, PART OF THE CONTRACTOR'S ORGANISATION	KEY PERSONNEL TO BE IMPORTED IF NOT AVAILABLE LOCALLY
Site Agent, Project Managers		
Foremen, Quality Control and Safety Personnel		
Technicians, Surveyors, etc		
Artisans and other Skilled workers		
Plant Operators		
Unskilled Workers		
Others: .....		
.....		

Note: CVs of key personnel may be requested during the contract period.

*I, the undersigned, who warrants that they are authorised to sign on behalf of the Tenderer, confirms that the information contained in this form is within my personal knowledge and is to the best of my belief both true and correct.*

NAME (Block Capitals): \_\_\_\_\_

Date

SIGNATURE: \_\_\_\_\_

\_\_\_\_\_

**T2.2.19 EXPERIENCE OF KEY PERSONNEL**

The experience of assigned staff member in relation to the Scope of Work will be evaluated from three different points of view:

- 1) General experience (total duration of professional activity), level of education and training and positions held of each discipline specific team leader.
- 2) The education, training, skills and experience of the Assigned Staff in the specific sector, field, subject, etc which is directly linked to the scope of work.
- 3) The key staff members' / experts' knowledge of issues which the tenderer considers pertinent to the project e.g. local conditions, affected communities, legislation, techniques etc.

**A CV of the contract manager, site agent(s) and general foreman of not more than 2 pages should be attached to this schedule:**

Each CV should be structured under the following headings:

- a) Personal particulars
  - name
  - date and place of birth
  - place (s) of tertiary education and dates associated therewith
  - professional awards
- b) Qualifications (degrees, diplomas, grades of membership of professional societies and professional registrations)
- c) Skills
- d) Name of current employer and position in enterprise
- e) Overview of post-graduate / diploma experience (year, organization and position)
- f) Outline of recent assignments / experience that has a bearing on the scope of work

*I, the undersigned, who warrants that they are authorised to sign on behalf of the Tenderer, confirms that the information contained in this form is within my personal knowledge and is to the best of my belief both true and correct.*

NAME (Block Capitals): \_\_\_\_\_

Date

SIGNATURE: \_\_\_\_\_

**T2.2.20 PRELIMINARY PROGRAMME**

The Tenderer shall detail below or attach a preliminary programme reflecting the proposed sequence and tempo of execution of the various activities comprising the work for this Contract. The programme shall be in accordance with the information supplied in the Contract, requirements of the Project Specifications and with all other aspects of his Tender.

PROGRAMME														
ACTIVITY	WEEKS / MONTHS													

Note: The programme must be based on the completion time as specified in the Contract Data.

*I, the undersigned, who warrants that they are authorised to sign on behalf of the Tenderer, confirms that the information contained in this form is within my personal knowledge and is to the best of my belief both true and correct.*

NAME (Block Capitals): \_\_\_\_\_

Date \_\_\_\_\_

SIGNATURE: \_\_\_\_\_

.....

\_\_\_\_\_



**T2.2.21 CONSTRUCTION APPROACH, METHODOLOGY, AND QUALITY CONTROL**Construction Approach and Methodology

The construction approach and methodology must respond to the Scope of Work and outline the proposed approach to undertake the work showing a detailed programme including health and safety aspects, the use of plant and resources for this Project.

Quality Control

The quality control statement must discuss what tests and control measures are to be employed on site to attain the specified results and is to cover the program associated activities.

**The tenderer must attach his / her Construction Methodology and Quality Control information to this page.**

*I, the undersigned, who warrants that they are authorised to sign on behalf of the Tenderer, confirms that the information contained in this form is within my personal knowledge and is to the best of my belief both true and correct.*

NAME (Block Capitals):

Date

SIGNATURE:

**T2.2.22 SCHEDULE OF PROPOSED SUBCONTRACTORS**

The following firms have been identified as possible subcontractors for work in this contract.

NAMES AND ADDRESSES OF PROPOSED SUBCONTRACTORS	NATURE AND EXTENT OF WORK TO BE SUBCONTRACTED	PREVIOUS EXPERIENCE WITH SUBCONTRACTOR

**Attach additional pages if more space is required**

*I, the undersigned, who warrants that they are authorised to sign on behalf of the Tenderer, confirms that the information contained in this form is within my personal knowledge and is to the best of my belief both true and correct.*

NAME (Block Capitals): \_\_\_\_\_

Date

SIGNATURE: \_\_\_\_\_

**T2.2.23 PLANT and EQUIPMENT**

The following are lists of major items of relevant equipment that I / we presently own or lease and will have available for this contract if my / our tender is accepted.

**(a) Details of major equipment that is owned by me / us and immediately available for this contract.**

DESCRIPTION (type, size, capacity etc)	QUANTITY	YEAR OF MANUFACTURE

*Attach additional pages if more space is required*

**(b) Details of major equipment that will be hired, or acquired for this contract if my / our tender is accepted**

DESCRIPTION (type, size, capacity etc)	QUANTITY	HOW ACQUIRED	
		HIRE/ BUY	SOURCE

*Attach additional pages if more space is required*

The Tenderer undertakes to bring onto site without additional cost to the Employer any additional plant not listed but which may be necessary to complete the contract within the specified contract period.

*I, the undersigned, who warrants that they are authorised to sign on behalf of the Tenderer, confirms that the information contained in this form is within my personal knowledge and is to the best of my belief both true and correct.*

NAME (Block Capitals): \_\_\_\_\_

Date \_\_\_\_\_

SIGNATURE: \_\_\_\_\_

**T2.2.24 CONTRACTOR'S HEALTH AND SAFETY PLAN**

At tender stage only a brief overview (**to be attached to this page**) of the tenderer's perception on the safety requirements for this contract will be adequate.

Only the successful Tenderer shall submit separately the Contractor's Health and Safety Plan as required in terms of Regulation 7 of the Occupational Health and Safety Act 1993 Construction Regulations 2014.

The detailed safety plan will take into consideration the site-specific risks as mentioned under **C.3: Project Specification**. A generic plan will not be acceptable.

*I, the undersigned, who warrants that they are authorised to sign on behalf of the Tenderer, confirms that the information contained in this form is within my personal knowledge and is to the best of my belief both true and correct.*

NAME (Block Capitals):

Date

SIGNATURE:

**PART C1: AGREEMENT AND CONTRACT DATA**

**C1.1: FORM OF OFFER AND ACCEPTANCE**

**C1.1.1: OFFER**

The Employer, identified in the Acceptance signature block, has solicited offers to enter into a contract in respect of the following works:

Contract No: 1H-28518

Contract Title: Completion of Civil Infrastructure Services and Top Structures at Etafuleni Housing Project

The Tenderer, identified in the Offer signature block below, has examined the documents listed in the Tender Data and addenda thereto as listed in the Tender Schedules, and by submitting this Offer has accepted the Conditions of Tender.

By the representative of the Tenderer, deemed to be duly authorised, signing this part of this Form of Offer and Acceptance, the Tenderer offers to perform all of the obligations and liabilities of the Contractor under the Contract including compliance with all its terms and conditions according to their true intent and meaning for an amount to be determined in accordance with the Conditions of Contract identified in the Contract Data.

**\* The offered total of the prices inclusive of Value Added Tax is:**

R..... (In words .....  
 .....)

This Offer may be accepted by the Employer by signing the Acceptance part of this Form of Offer and Acceptance and returning one copy of this document to the Tenderer before the end of the period of validity stated in the Tender Data, whereupon the Tenderer becomes the party named as the Contractor in the Conditions of Contract identified in the Contract Data.

**For the Tenderer:**

**\* Name of Tenderer** (organisation) : .....

**\* Signature** (of person authorized to sign the tender) : .....

**\* Name** (of signatory in capitals) : .....

**Capacity** (of Signatory) : .....

**Address** : .....  
 : .....

**Telephone** : .....

**Witness:**

**Signature** : ..... **Date** : .....

**Name** (in capitals) : : .....

**Notes:**

**\* Indicates what information is mandatory.**

**Failure to complete the mandatory information and sign this form will invalidate the tender.**

**C1.1: FORM OF OFFER AND ACCEPTANCE**

**C1.1.2: FORM OF ACCEPTANCE**

This Form will be completed by the Employer

By signing this part of the Form of Offer and Acceptance, the Employer identified below accepts the Tenderer's Offer. In consideration thereof, the Employer shall pay the Contractor the amount due in accordance with the Conditions of Contract identified in the Contract Data. Acceptance of the Tenderer's Offer shall form an agreement between the Employer and the Tenderer upon the terms and conditions contained in this Agreement and in the Contract that is the subject of this Agreement.

The terms of the contract are contained in:

- Part C1 : Agreement and Contract Data, (which includes this Agreement)
- Part C2 : Pricing Data, including the Bill of Quantities
- Part C3 : Scope of Work
- Part C4 : Site Information

and the schedules, forms, drawings and documents or parts thereof, which may be incorporated by reference into Parts C1 to C4 above.

Deviations from and amendments to the documents listed in the Tender Data and any addenda thereto listed in the Tender Schedules as well as any changes to the terms of the Offer agreed by the Tenderer and the Employer during this process of offer and acceptance, are contained in the Schedule of Deviations attached to and forming part of this Agreement. No amendments to or deviations from said documents are valid unless contained in this Schedule, which must be duly signed by the authorised representatives of both parties.

The Tenderer shall within two weeks after receiving a completed copy of this Agreement, including the Schedule of Deviations (if any), contact the Employer's agent (whose details are given in the Contract Data) to arrange the delivery of any bonds, guarantees, proof of insurance and any other documentation to be provided in terms of the Conditions of Contract identified in the Contract Data at, or just after, the date this Agreement comes into effect. Failure to fulfill any of these obligations in accordance with those terms shall constitute a repudiation of this Agreement.

Notwithstanding anything contained herein, this Agreement comes into effect on the date when the Tenderer receives one fully completed original copy of this document, including the Schedule of Deviations (if any). Unless the Tenderer (now Contractor) within five days of the date of such receipt notifies the Employer in writing of any reason why he cannot accept the contents of this Agreement, this Agreement shall constitute a binding contract between the parties.

Signature (*person authorized to sign the acceptance*) : .....

Name (*of signatory in capitals*) : .....

Capacity (*of Signatory*) : .....

Name of Employer (*organisation*) : .....

Address : .....

: .....

Witness:

Signature : ..... Date : .....

Name(*in capitals*) : : .....

**C1.1: FORM OF OFFER AND ACCEPTANCE**  
**C1.1.3: SCHEDULE OF DEVIATIONS**

This form will be completed by THE EMPLOYER and ONLY THE SUCCESSFUL TENDERER

1. Subject : .....
- Details : .....
2. Subject : .....
- Details : .....
3. Subject : .....
- Details : .....

By the duly authorised representatives signing this Schedule of Deviations, the Employer and the Tenderer agree to and accept the foregoing Schedule of Deviations as the only deviations from and amendments to the documents listed in the Tender Data and addenda thereto as listed in the Tender Schedules, as well as any confirmation, clarification or change to the terms of the offer agreed by the Tenderer and the Employer during this process of offer and acceptance.

**FOR THE TENDERER**

**FOR THE EMPLOYER**

.....	Signature	.....
.....	Name ( <i>in capitals</i> )	.....
.....	Capacity	.....
.....	Name and Address of	.....
.....	Organisation	.....
.....		.....
.....		.....
.....	Witness Signature	.....
.....	Witness Name	.....
.....	Date	.....

**C1.2: CONTRACT DATA****C1.2.1 CONDITIONS OF CONTRACT****C1.2.1.1 GENERAL CONDITIONS OF CONTRACT**

The Conditions of Contract are the **General Conditions of Contract for Construction Works (2015 3<sup>rd</sup> Edition)**, (**GCC 2015**) published by the South African Institution of Civil Engineering. Copies of these conditions of contract may be obtained from the South African Institution of Civil Engineering (Tel: 011-805-5947, Fax: 011-805-5971, E-mail: [civilinfo@saice.org.za](mailto:civilinfo@saice.org.za)).

The Contract Data (including variations and additions) shall amplify, modify, or supersede, the GCC 2015 to the extent specified below, and shall take precedence and shall govern.

Each item of data given below is cross-referenced to the clause in the GCC 2015 to which it mainly applies.



**C1.2.2 CONTRACT DATA****C1.2.2.1 DATA TO BE PROVIDED BY THE EMPLOYER**

- 1.1.1.13 The **Defects Liability Period**, from the date of the Certificate of Completion, is **1 Year**.
- 1.1.1.14 The **time for achieving Practical Completion**, from the Commencement Date is **78 Weeks**. The period as stated in 5.3.2, and the 7 days referred to in 5.3.3, are included in the above time for achieving Practical Completion. The special non-working days as stated in 5.8.1 are excluded from the above time for achieving Practical Completion.
- 1.1.1.15 The Employer is the eThekweni Municipality as represented by:  
Deputy Head: **Housing Engineering**
- 1.2.1.2 The address of the Employer is:  
Physical: **199 Anton Lembede Street, Durban, 4001**  
Postal: **Human Settlement Units, PO Box 3858, Durban, 4000**  
Telephone: **031 322 9458**  
Fax: **N/A**  
E-Mail: **Sma.phiri@durban.gov.za**
- 1.1.1.16 The **name of the Employer's Agent** is Mxolisi Tshabalala
- 1.2.1.2 The address of the Employer' Agent is:  
Physical: **199 Anton Lembede Street, Durban, 4001**  
Postal: **Human Settlement Units, PO Box 3858, Durban, 4000**  
Telephone: **031 322 8813**  
Fax: **N/A**  
E-Mail: **Mxolisi.Tshabalala@durban.gov.za**
- 1.1.1.26 The **Pricing Strategy** is by **Re-measurement Contract**.

- 3.2.3 The Employer's Agent shall obtain the **specific approval of the Employer** before executing any of his functions or duties according to the following Clauses of the General Conditions of Contract:
- 6.3 : Council approval in order to authorise any expenditure in excess of the Tender Sum plus **15% contingencies**.

- 4.11.1 To carry out and complete the works, the Contractor shall employ a competent Site Agent and Foreman as part of the key staff. It is a requirement for the Contractor's Site Agent and Foreman to each have a minimum of 3 years relevant experience including experience on projects of a similar nature. The CV's of the Site Agent and the Foreman should be submitted to the Employer's Agent's Representative for acceptance by the Department (reference is made to Cl.5.3.1 of the Contract Data).

**Note:**

- i) "similar nature" implies projects that were of a value of at least 70% of this tender's value, and had a comparable Scope of Work in terms of technical requirements and operations.
- ii) "experience" implies experience on projects of a similar nature.
- iii) "accredited degree / diploma" implies a minimum 3-year qualification within the built environment, from a registered University or Institute of Technology.

- 5.3.1 The **documentation required** before commencement with Works execution are:

- **Health and Safety Plan (refer to Clause 4.3)**
- **Initial Programme (refer to Clause 5.6)**
- **Security (refer to Clause 6.2)**
- **Insurance (refer to Clause 8.6)**

- CV(s) of Key Site Staff (refer to Clause 4.11.1)
- CPG Implementation Plan (if applicable)

5.3.2 The time to submit the documentation required before commencement with Works is **14 Days**.

5.3.3 Add the following paragraph:

“If a construction work permit, in terms of Clause 3(1) of the Construction Regulations (2014), is applicable, the instruction to commence carrying out of the works may only be issued once the construction work permit has been obtained by the Employer’s Agent. If a construction work permit is applicable, the contractor shall allow for a minimum period of 37 days, after the submission (or re-submission) of the documentation referred to in Clause 5.3.1., for the issuing of the construction work permit.”

5.8.1 The **non-working days** are Sundays.

(5.1.1) The **special non-working days** are:

- All statutory holidays as declared by National or Regional Government.
- The year-end break:
  - Commencing on the first working day after 15 December.
  - Work resumes on the first working day after 5 January of the next year.

5.8.1 Delete the words “sunset and sunrise” and replace with “17:00 and 07:00”.

5.12.2.2 **Abnormal Climatic Conditions (Rain Delays)** - The numbers of days per month, on which work is expected not to be possible as a result of rainfall, for which the Contractor shall make provision, is given in the table below. During the execution of the Works, the Employer’s Agent’s Representative will certify a day lost due to rainfall only if at least 75% of the work force and plant on site could not work during that specific working day.

Extension of time as a result of rainfall shall be calculated monthly being equal to the number days certified by the Employer’s Agent’s Representative as lost due to rainfall, less the number of days allowed for as in table below, which could result in a negative figure for certain months. The total extension of time for which the Contractor may apply, shall be the cumulative algebraic sum of the monthly extensions. Should the sum thus obtained be negative, the extension of time shall be taken as NIL.

<u>Month</u>	<u>Days Lost</u>	<u>Average Rainfall</u>	<u>Month</u>	<u>Days Lost</u>	<u>Average Rainfall</u>
January	4*	134	July	1	39
February	3	113	August	2	62
March	3	120	September	2	73
April	2	73	October	3	98
May	2	59	November	3	108
June	1	28	December	1*	102
TOTAL	27	1009mm	* = The number of working days lost allows for the annual statutory Construction holiday in December and January of each year.		

5.13.1 The **penalty for delay** in failing to complete the Works is 0.0167% of the project value per day calculated as 0.0167%x **R Project Value** (per Day).

5.14.1 The **requirements for achieving Practical Completion** will be determined by the Employer’s Agent (in consultation with the Contractor) and recorded in the minutes of the first Site Meeting / Handover Meeting. (Refer to 1.1.1.24 for a generic definition.) The requirements are to be

regularly reviewed with respect to any variations to the Contract.

5.16.3 The **latent defect liability** period is **10 Years**.

6.2.1 **Security (Performance Guarantee)**: Delete the word “selected” and replace it with “stated”.

The liability of the Performance Guarantee shall be as per the following table:

Value of Contract (incl. VAT)	Performance Guarantee Required
Less than or equal to R 1m	Nil
Greater than R 1m and less than or equal to R 10m	5% of the Contract Sum
Greater than R 10m	10% of the Contract Sum

6.5.1.2.3 The **percentage allowance** to cover overhead charges for daywork are as follows:

- **80%** of the gross remuneration of workmen and foremen actually engaged in the daywork;
- **20%** on the net cost of materials actually used in the completed work.

No allowance will be made for work done, or for materials and equipment for which daywork rates have been quoted at tender stage.

6.8.2 **Contract Price Adjustment Factor:** The value of the certificates issued shall be adjusted in accordance with the Contract Price Adjustment Schedule (GCC 2015 - page 86) with the following Indices / Descriptions / Coefficients:

- The proportion not subject to adjustment: **x = 0.10.**
- The base month will be the month prior to the month in which tenders close.
- The Index for Labour, Plant, and Materials shall be based on **December 2021 = 100.**
- The Index for Fuel shall be based on **December 2020 = 100.**

	STATS SA Statistical Release	Table	Description	Coefficient
• "L" is the "Labour Index"	P0141	Table A	Geographic Indices; CPI per Province; Kwa-Zulu Natal	<b>a = 0.28</b>
• "P" is the • "Contractor's Equipment Index"	P0151.1	Table 4	Plant and Equipment	<b>b = 0.28</b>
• "M" is the "Materials Index"	P0151.1	Table 6	Civil Engineering Material (Excluding bitumen)	<b>c = 0.38</b>
• "F" is the "Fuel Index"	P0142.1	Table 1	Coke, petroleum, chemical, rubber and plastic products; Coal and petroleum products; Diesel	<b>d = 0.06</b>

6.8.3 Price adjustments for **variation in the cost of the special material(s)** listed below, will be allowed.

**Bitumen** - escalation will be calculated using the "Rise and Fall" method as determined by the Employer. The base price for bitumen on this contract shall be the ruling price of 50/70 grade bitumen based on the "Shell Wholesale List Selling Price for Penetration Grade Bitumen", seven (7) days prior to the closing date of tenders.

6.10.1.5 The **percentage advance** on materials not yet built into the Permanent Works is **80%**.

6.10.3 **Retention Money:** Delete the word "selected".

The percentage retention on the amounts due to the Contractor is 10%.

The limit of "retention money" is 5% of the Contract Sum.

Should the Contract Price exceed the Contract Sum then the limit of "retention money" is 5% of the Contract Price.

Interest will not be paid on retention withheld by the Employer.

8.6.1.1.2 The **value of Plant and materials** supplied by the Employer to be included in the insurance sum: **Not Required.**

8.6.1.1.3 The **amount to cover professional fees** for repairing damage and loss to be included in the

insurance sum: **Not Required.**

8.6.1.2 **SASRIA Coupon Policy** for Special Risks to be issued in joint names of Council and Contractor for the full value of the works (including VAT).

8.6.1.3 The limit of indemnity for **liability insurance: R 10,000,000.00.**

8.6.1.4 **Ground Support Insurance:**

- Minimum amount for any one occurrence, unlimited as to the number of occurrences, against any claim for damages or loss caused by vibration and / or removal of lateral support: **R 2,000,000.**
- Maximum first excess: **R 10,000.00.**

8.6.1.5 Furthermore, the insurance cover effected by the Contractor shall meet the following requirements:

**Third Party Insurance (Public Liability)**

- Minimum amount for any one occurrence, unlimited as to the number of occurrences, for the period of the contract, inclusive of the maintenance period: **R 1,000,000.**
- Consequential loss to be covered by policy: **Yes**
- Liability section of policy to be extended to cover blasting: **R 5000,000.**
- Maximum excess per claim or series of claims arising out of any one occurrence: **R 20,000,000.**

**Principal's own surrounding Property Insurance**

- Minimum amount for any one occurrence unlimited as to the number of occurrences against any claim for damage which may occur to the Council's own surrounding property: **R 500,000.00.**
- Maximum first excess: **R 20,000,000.**

**Insurance of Works**

- Minimum amount for additional removal of debris (no damage): **Nil.**
- Minimum amount for temporary storage of materials off site, excluding Contractor's own premises: **Nil.**
- Minimum amount for transit of materials to site: **Nil.**

8.6.5 **Approval by Employer:** At the end of the sub-clause, add the following paragraph:

"Except where otherwise provided in the Special Conditions of Contract, the insurance cover effected by the Contractor in terms of this clause shall not carry a first loss amount greater than those set out below:

Contract Price	First Loss
Less than R 100,000	R 5,000
R 100,000 to R 500,000	R 10,000
R 500,000 to R 1,000,000	R 20,000
R 1,000,000 to R 2,000,000	R 30,000
R 2,000,000 to R 4,000,000	R 40,000
Greater than R 4,000,000	R 50,000

The insurance policy shall contain a specific provision whereby cancellation of the policy prior to the end of the period referred to in Cause 8.2.1 cannot take place without the prior written approval of the Employer."

10.7.1 Failing ad-hoc adjudication, the disputes shall be submitted and arbitrated by the Adjudication Board.

**C1.2.2.2 DATA TO BE PROVIDED BY CONTRACTOR**

1.1. The legal name of Contractor is:  
1.9

.....  
.....  
.....  
.....  
.....  
.....

1.2. The Physical address of the Contractor is:  
1.2

.....  
.....  
.....  
.....  
.....  
.....

The Postal address of the Contractor is:

.....  
.....  
.....  
.....  
.....  
.....

The contact numbers of the Contractor are:

Telephone:

.....

Fax:

.....

The E-Mail address of the Contractor is:

.....  
.....

6.5. The **percentage allowance** to cover overhead charges for daywork are as follows:

1.2.

3

- % of the gross remuneration of workmen and foremen actually engaged .....  
in the daywork; .....  
%
  
- % on the net cost of materials actually used in the completed work. ....  
.....  
%



## C1.2.3 ADDITIONAL CONDITIONS OF CONTRACT

### C1.2.3.1 COMMUNITY LIAISON OFFICER

The Ward Councillor(s) in whose ward(s) work is to be done will, collectively, identify a community liaison officer (CLO) for the project and make the person known to the Contractor within two days of being requested to do so. The Contractor will be required to enter a written contract with the CLO that specifies:

- The hours of work and the wage rate of the CLO (200% of the Civil Engineering Industry minimum wage).
- The duration of the appointment.
- The duties to be undertaken by the CLO which could include:
  - Assisting in all respects relating to the recruitment of local labour.
  - Acting as a source of information for the community and councillors on issues related to the contract.
  - Keeping the Contractor advised on community issues and issues pertaining to local security.
  - Assisting in setting up any meetings or negotiations with affected parties.
  - Keeping a written record of any labour or community issue that may arise.
  - Any other duties that may be required by the Contractor.

Responsibility for the identification of a pool of suitable labour shall rest with the CLO, although the Contractor shall have the right to choose from that pool. The Contractor shall have the right to determine the total number labourers required at any one time and this may vary during the contract.

The Contractor shall have the right to replace labour that is not performing adequately. Should such occasion arise, it must be done in conjunction with the CLO.

Payment: The CLO will be reimbursed from the PC Sum item in the Preliminary & General Section of the Bill of Quantities.

### C1.2.3.2 EMPLOYMENT OF LOCAL LABOUR

It is a condition of contract that the contractor will be required to employ local labour as specified in eThekweni Council Policy "The use of CLOs and Local Labour". The contractor will be required to ensure that a minimum of 50% of the labour force is made up of local labour. For the purposes of this contract, "Local labour" will be deemed to be any **persons who reside within Ward(s) 56 & 53**. The contractor will be required to provide proof of authenticity of local labour. Signed confirmation by the appointed CLO will suffice for this.

No additional costs will be entertained due to this Particular Specification. The contractor will remain responsible for providing proper supervision of all labour and will be responsible for the quality of work produced.

### C1.2.3.3 CONTRACTOR PARTICIPATION GOAL (CPG)

It is a condition of contract that the contractor must allow for a minimum of **30%** of the contract value (excluding PC Sum items and Fixed Cost allowances) to be subcontracted to contractors who are **>51% PPG** (Priority Population Group) owned. Proof of payment to the subcontractors will be required to verify that the minimum has been achieved.

The penalty for not achieving the specified CPG will be 0.5% of the contract value (excluding PC Sum items and Fixed Cost allowances) for every 1% of CPG not achieved.

**C1.2.3.4 FTE (Full Time Equivalent) EMPLOYMENT INFORMATION**

It is a condition of contract that the Contractor supplies the Employer's Agent's Representative with information in respect of the employment of all foremen, artisans and labour (skilled and unskilled) employed to work on this contract. The information required is:

- Initials (per ID doc)
- Last Name (per ID doc)
- ID Number
- Disability (y / n)

- Education Level

Level 1 Unknown	Level 2 No Schooling	Level 3 Grade 1-3	Level 4 Grade 4	Level 5 Grade 5-6
Level 6 Grade 7- 8	Level 7 Grade 9	Level 8 Grade 10-11	Level 9 Grade 12	Level 10 Post Matric

- Category of Employment

Category A: Employed as Local Labour for this contract only Category B: Temporarily employed by the Contractor Category C: Permanently employed by the Contractor
---

In addition, the following information is required in respect of each person listed above, on a monthly basis:

- Number of days worked during the month;
- Daily wage rate;
- Number of training days during the month.

The information is to be forwarded in a format acceptable to the Employer's Agent's Representative, but preferably in the form of an emailed EXCEL file (an original file, to be used as a template, will be issued to the Contractor). Contractors without computer facilities will be required to submit a hard copy of the information in a format as agreed to between the Contractor and the Employer's Agent's Representative.

In addition to the tax invoice, to be submitted by the Contractor with his monthly statement, mentioned in Clause 6.10.4 of GCC 2015, the Employer reserves the right to withhold payment until the monthly FTE information has been forwarded to the Employer's Agent's Representative. No additional payment for complying with the above will be made and the Contractor is to make allowance for complying through the time related P & G items (sum) under Part AA: Preliminaries, of the Bill of Quantities.

**C1.2.3.5 PERFORMANCE MONITORING OF SERVICE PROVIDERS**

The Contractor shall be subjected to "Performance Monitoring" assessments in terms of the applicable Section (S.53) of the Employer's Supply Chain Management Policy.

Key Performance Indicators (KPIs) are specified in the C3: Scope of Works or will be discussed and agreed with the Contractor before commencement of the contract.

**C1.2.3.6 EXCEPTED RISKS (Clause 8.3)**

Pursuant to Clause 8.3 of the Conditions of Contract (GCC 2015), the Employer shall not be liable for the payment of standing time costs as a result of the occurrence of any of the "Excepted Risks" as defined under Clause 8.3.

However, the Employer shall reimburse the Contractor in respect of plant de-establishment and re-establishment costs as a result of "Excepted risks" when a written instruction to de-establish is issued to the Contractor.

## C2.1: PRICING ASSUMPTIONS / INSTRUCTIONS

### C2.1.1 GENERAL

The Bill of Quantities forms part of the Contract Documents and must be read and priced in conjunction with all the other documents comprising the Contract Documents (refer to F.1.2 of the Tender Data).

### C2.1.2 PRICING INSTRUCTIONS AND DESCRIPTION OF ITEMS IN THE SCHEDULE

Measurement and payment shall be in accordance with the relevant provisions of **Clause 8 of each of the Standard Engineering Specifications** referred to in the Scope of Work. The Preliminary and General items shall be measured in accordance with the provisions of **C2.1.8**.

The descriptions of the items in the Bill of Quantities are for identification purposes only and comply generally with those in the Standard Engineering Specification.

**Clause 8 of each Standard Engineering Specification**, read together with the relevant clauses of the Scope of the works, set out what ancillary or associated work and activities are included in the rates for the operations specified. Should any requirements of the measurement and payment clause of the applicable Standard Engineering Specification, or the Scope of the works, conflict with the Bill of Quantities, the requirements of the Standard Engineering Specification or Scope of the work, as applicable, shall prevail.

### C2.1.3 QUANTITIES REFLECTED IN THE SCHEDULE

The quantities given in the Bill of Quantities are estimates only, and subject to re-measuring during the execution of the work. The Contractor shall obtain the Employer's Agent's detailed instructions for all work before ordering any materials or executing work or making arrangements for it.

The Works as finally completed in accordance with the Contract shall be measured and paid for as specified in the Bill of Quantities and in accordance with the General and Special Conditions of Contract, the Specifications and Project Specifications and the Drawings. Unless otherwise stated, items are measured

net in accordance with the Drawings, and no allowance has been made for waste.

The validity of the contract will in no way be affected by differences between the quantities in the Bill of Quantities and the quantities finally certified for payment.

### C2.1.5 MONTHLY PAYMENTS

Unless otherwise specified in the Specifications and Project Specifications, progress payments in Interim Certificates, referred to in **Clause 6.10.1 of the General Conditions of Contract**, in respect of "sum" items in the Bill of Quantities shall be by means of interim progress instalments assessed by the Employer's Agent and based on the measure in which the work actually carried out relates to the extent of the work to be done by the Contractor.

### C2.1.4 PROVISIONAL SUMS / PRIME COST SUMS

Where Provisional Sums or Prime Cost sums (PC Sum) are provided for items in the Bill of Quantities, payment for the work done under such items will be made in accordance with **Clause 6.6 of the General Conditions of Contract**. The Employer reserves the right, during the execution of the works, to adjust the stated amounts upwards or downwards according to the work actually done under the item, or the item may be omitted altogether, without affecting the validity of the Contract.

The Tenderer shall not under any circumstances whatsoever delete or amend any of the sums inserted in the "Amount" column of the Bill of Quantities and in the Summary of the Bill of Quantities unless ordered or authorized in writing by the Employer before closure of tenders. Any unauthorized changes made by the Tenderer to provisional items in the schedule, or to the provisional percentages and sums in the Summary of the Bill of Quantities, will be treated as arithmetical errors.

### C2.1.6 PRICING OF THE BILL OF QUANTITIES

The prices and rates to be inserted by the Tenderer in the Bill of Quantities shall be the full inclusive prices to be paid by the Employer for the work described under

the several items, and shall include full compensation for all costs and expenses that may be required in and for the completion and maintenance during the defects liability period of all the work described and as shown on the drawings as well as all overheads, profits, incidentals and the cost of all general risks, liabilities and obligations set forth or implied in the documents on which the Tender is based.

Each item shall be priced and extended to the "Total" column by the Tenderer, with the exception of the items for which only rates are required (Rate Only), or items which already have Prime Cost or Provisional Sums affixed thereto. If the Contractor omits to price any items in the Bill of Quantities, then these items will be considered to have a nil rate or price.

All items for which terminology such as "inclusive" or "not applicable" have been added by the Tenderer will be regarded as having a nil rate which shall be valid irrespective of any change in quantities during the execution of the Contract.

All rates and amounts quoted in the Bill of Quantities shall be in Rands and Cents and shall include all levies and taxes (other than VAT). VAT will be added in the Summary of the Bill of Quantities.

#### **C2.1.7 "RATE ONLY" ITEMS**

The Tenderer shall fill in rates for all items where the words "Rate Only" appear in the "Total" column. "Rate Only" items have been included where:

- (a) an alternative item or material is contemplated.
- (b) variations of specified components in the make-up of a pay item may be expected; and
- (c) no work under the item is foreseen at tender stage but the possibility that such work may be required is not excluded.

For "Rate Only" items no quantities are given in the "Quantity" column, but the quoted rate shall apply in the event of work under this item being required. The Tenderer shall however note that in terms of the

Tender Data the Tenderer may be asked to reconsider any such rates which the Employer may regard as unbalanced.

#### **C2.1.8 PRELIMINARY AND GENERAL**

The Preliminary and General Section is provided to cover the Contractor's expenses incurred in complying with the requirements of the tender documents and consists of the following parts:

- Part AA: Preliminaries
- Part AB: General Specifications
- Part AH: Occupational Health and Safety

**Fixed Charge Items:** Each item should be priced separately and, subject to the Engineer certifying in terms of **Clause 6.7 of the General Conditions of Contract** that the work has been done, payment will be made as follows:

- (i) the total amount due when the certified value fixed charge items in this section is less than 5% of the net contract price.
- (ii) when the certified value of fixed charge items in this section is greater than 5% of the net contract price, payment will be limited to 5% of the net contract price. The remainder will be paid when the value of the work done under the contract, excluding the value of fixed charge items in this section, is greater than 50% of the net contract price, excluding the value of fixed charge items in this section.

**Time Related Items:** Any Time Related items not priced shall be deemed to be covered by the prices of other items in the section.

Payment of Time Related items in this section will be made throughout the contract period, the amount per month being the value of the item divided by the completion in months or, if specified in weeks, the equivalent number of months, in terms of **Clause 5.5 of the General Conditions of Contract**. The final monthly increment will only be paid upon the issue of a completion certificate.

## **C2.2: BILL OF QUANTITIES**

The Bill of Quantities follows and comprises of 16 pages. The pages are numbered **BOQ 69 to BOQ 85**

Item	Clause	Bill description	Unit	Qty	Rate	Amount
		ETAFULENI PHASE 1A & 1DA: CONSTRUCTION OF CIVIL SERVICES & 448 TOP STRUCTURES				
		TIME RELATED ITEMS				
17	AB 2.1	Preliminary and General: Time Related Items	sum	1		
18		Contractor's superintendence	sum	1		
19		Setting out	sum	1		
20		Watching and lighting	sum	1		
21		Care of works, damage to persons and property	sum	1		
22		Facilities for other contractors	sum	1		
23		Provision of plant, materials and labour	sum	1		
24		Clearance of site during contract and on completion	sum	1		
25		Cost of samples and contractor's preliminary and site control testing	sum	1		
26		Temporary reinstatements	sum	1		
27		Attendance on and maintenance of office for Engineer and staff	sum	1		
33		Survey for, and preparation of, 'as-built' drawings	sum	1		
34		Survey coordination of all valves, manholes, catchpits, and cable duct markers	sum	1		
38		b) Community Liason Officers	Prov Sum	1	600,000.00	
39		c) % Profit and attendance on item 38	%	0.15		
40		Compliance with occupational health and safety act	sum	1		
41		Allow for the additional survey as ordered by the Engineer	Prov Sum	1	115,000.00	
42		% Profit and attendance on item 41	%			
43		Allow for additional Geotechnical Services as instructed by the Engineer	Prov Sum	1	75,000.00	
44		% Profit and attendance on item 43	%			
45		Cost for Health and Safety Officer	Prov Sum	1	100,000.00	
46		% Profit and attendance on item 45	%			
50		Professional Fees	sum	1	2,500,000.00	
51		Special Water fittings not available from EtheKwini Stores	sum	1	350,000.00	
		PART AB: GENERAL SPECIFICATIONS				
<b>TOTAL CARRIED FORWARD to Page 70</b>						

Item	Clause	Bill description	Unit	Qty	Rate	Amount	
		PART AH OCCUPATIONAL HEALTH and SAFETY					
		<b>TOTAL BROUGHT FOWARD From Page 69</b>					
1	AH 14.1	Contractor's initial obligation in respect of the Occupational Health and Safety Act in construction regulations	sum	25000			
2	AH 14.2	Contractor's time related obligations in respect of the Occupational Health and Safety Act in construction regulations	sum	1			
		PART AH OCCUPATIONAL HEALTH and SAFETY					
		SECTION 1: PRELIMINARY AND GENERAL					
<b>TOTAL FOR SECTION 1 CARRIED FORWARD TO SUMMARY</b>							

Item	Clause	Bill description	Unit	Qty	Rate	Amount
		SECTION 2: SITE CLEARANCE				
		PART B SITE CLEARANCE				
1	B.8.2	General clearance and grubbing	m <sup>2</sup>	200		
2	B.8.10	Removal of unreinforced concrete (Provisional)	m <sup>2</sup>	19		
3	B.8.11	Removal of reinforced concrete (Provisional)	m <sup>2</sup>	380		
4	B.8.9	Removal of brickwork above ground (Provisional)	m <sup>2</sup>	106		
5	B.8.4	Removal of large trees of girth > 1,5	no.	4976		
6	B.8.14	Removal of roadways to tip	m <sup>3</sup>	95		
7	B.8.15	Removal of asphalt sidewalks/medians to tip	m <sup>3</sup>	127		
8	B.8.16	Removal of precast kerb and channel to tip	m <sup>3</sup>	253		
9	B.8.8	Demolition of Existing Structures (Provisional)	Prov Sum	1	200,000.00	
10		% Profit and attendance on item 9	%			
11		Relocation of Existing Services	Prov Sum	1		
12		% Profit and attendance on item 11	%		1000000	
		SECTION 2: SITE CLEARANCE				
<b>TOTAL FOR SECTION 2 CARRIED FORWARD TO SUMMARY</b>						



Item	Clause	Bill description	Unit	Qty	Rate	Amount
<b>SECTION 3: ROADWORKS</b>						
PART DA EARTHWORKS: BULK						
1	DA.8.2	Excavate 100-200mm selected topsoil and stockpile	m <sup>3</sup>	2.5		
2	DA 8.3	Excavate soft material and place directly into fill (as directed by Engineer)	m <sup>3</sup>	1		
3	DA 8.3	Excavate selected suitable soft material to stockpile	m <sup>3</sup>	84		
4	DA8.3	Excavate unsuitable material and spoil at tip (municipal dump site or approved dump site)	m <sup>3</sup>	80		
5		EO.for excavation of intermediate material	m <sup>3</sup>	192		
6		E.O. for excavation of hard material	m <sup>3</sup>	0.12		
8	DA 8.5	Extra over item 2-7 for restricted excavation	m <sup>3</sup>	67		
9	DA 8.7	Stockpile handling of soft material to fill	m <sup>3</sup>	64		
10	DA 8.5	Compact soft material from site to 93% Mod. AASHTO	m <sup>3</sup>	1		
11	DA 5.2.2	Excavate unsuitable material below embankments or formation and spoil at municipal tip or approved dump site (including haulage and fees)	m <sup>3</sup>	125		
12	DA8.5	Form, scarify and compact formation to 95% Mod AASTHO	m <sup>2</sup>	24		
13		Import dump rock fill material from commercial source (including haulage)	m <sup>3</sup>	150		
14		Compact dump rock material	m <sup>3</sup>	39		
15		Import G7 material from contractor's off-site or commercial source inclusive of haulage and royalties	m <sup>3</sup>	162		
16	DA 8.5	Compact G7 material to 95% Mod. AASHTO	m <sup>3</sup>	123		
17		Import G5 material from contractor's off-site or commercial source inclusive of haulage and royalties	m <sup>3</sup>	261		
18		Compact G5 material to 95% Mod. AASHTO	m <sup>3</sup>	202		
19		Import clean coarse sand from contractor's off-site source inclusive of haulage and royalties	m <sup>3</sup>	348		
20		Compact clean coarse sand to 95% Mod AASHTO.	m <sup>3</sup>	39		
21	DA 8.6	Trimming of embankments	m <sup>2</sup>	9		
22		Shaping of verges	m <sup>2</sup>	12		
23		Allow PC sum for Engineers acceptance testing	Prov Sum	1	75,000.00	
24		% Profit and attendance on item 23	%			
25		Environmental Improvements - Attenuation Structures (Provisional)	Prov Sum	1.	50,000.00	
26		% Profit and attendance on item 25	%			
PART DA EARTHWORKS: BULK						
<b>TOTAL CARRIED FORWARD to Page 73</b>						

Item	Clause	Bill description	Unit	Qty	Rate	Amount
		PART DB EARTHWORKS FOR PIPE TRENCHES				
		<b>TOTAL BROUGHT FORWARD From Page 72</b>				
6	DB 8.5	Excavate and backfill in all material for 375 mm diameter pipe where depth is Over 0 m and not exceeding 1.5 m	m	110		
7	DB 8.5	Excavate and backfill in all material for 375 mm diameter pipe where depth is Over 1.5 m and not exceeding 2 m	m	155		
8	DB 8.5	Excavate and backfill in all material for 375 mm diameter pipe where depth is Over 2 m and not exceeding 2.5 m	m	248		
10	DB 8.5	Excavate and backfill in all material for 450 mm diameter pipe where depth is Over 0.0 m and not exceeding 1.5 m	m	125		
11	DB 8.5	Excavate and backfill in all material for 450 mm diameter pipe where depth is Over 1.5 m and not exceeding 2 m	m	175		
15	DB 8.6	E.O. for trench excavation in hard material (Provisional)	m <sup>3</sup>	92		
16		E. O. for trench excavation in rock (Provisional)	m <sup>3</sup>	255		
17		E.O. item 4-22 for restricted excavation and backfill	m <sup>3</sup>	89		
19	8.10	Placing and compacting of Class C bedding for 375 mm diameter pipe	m	6		
20	8.10	Placing and compacting of Class C bedding for 450 mm diameter pipe	m	7		
21	8.12	Provision of selected granular material for pipe bedding (Provisional)	m <sup>3</sup>	38		
		PART DB EARTHWORKS FOR PIPE TRENCHES				
<b>TOTAL CARRIED FORWARD to Page 74</b>						

Item	Clause	Bill description	Unit	Qty	Rate	Amount
<b>TOTAL BROUGHT FORWARD From Page 73</b>						
1	EB 8.1	Graded G2 crushed stone base, layer thickness 150mm (Compacted to 98% Mod AASHTO)	m <sup>3</sup>	700		
2	EB 8.2	Prime coat at 0.61 l/m2	m <sup>2</sup>	11		
		PART EB GRADED CRUSHED STONE				
		PART ED ROAD ASPHALT				
1		9.5mm continuously graded wearing course of compacted thickness 30 mm. Mix 'A'. Bitumen content of 5%	t	1226		
2	ED 8.3.1	Transverse joints	m	10		
3	ED 8.3.2	Longitudinal joints	m	15		
4		EO Item 3 & 4 for saw cutting with a diamond tipped cutter.	m	25		
5	ED 8.4	Tack coat at 0.3 l/m2	m <sup>2</sup>	5		
		PART ED ROAD ASPHALT				
		PART EF KERBS AND HAUNCHES				
1	EF 5.1.3 C	Modified Type F mountable kerb and channel (150mm)	m	214		
5	EF 5.1.3 D	Scoop kerb and channel including transition kerb	m	197		
8		Extra over item 1 & 2 for curves of radius less than 25 m	m	25		
		PART EF KERBS AND HAUNCHES				
		PART EH STEEL GUARDRAILS & CONCRETE MEDIAN BARRIERS				
1	EH 8.1	Straight steel guard rails (including fittings)	m	360		
		PART EH STEEL GUARDRAILS & CONCRETE MEDIAN BARRIERS				
<b>TOTAL CARRIED FORWARD to Page 75</b>						

Item	Clause	Bill description	Unit	Qty	Rate	Amount
		PART F PROTECTION WORKS				
		<b>TOTAL BROUGHT FORWARD From Page 74</b>				
1	F 8.2	Topsoiling from stockpile 100mm thick	m <sup>2</sup>	16		
3		Hydroseeding to embankments	m <sup>2</sup>	9		
6	F 8.6	Gabion mattresses 230mm depth	m <sup>3</sup>	2726		
7	F 8.4	Stone pitching 150mm deep	m <sup>2</sup>	482		
8	F 8.5	Catchwater channel with concrete lining - width 1.50m. Drawing No. ETA-1_Sheet R107	m	1694		
9	F 8.5	Catchwater channel with concrete lining - width 2m. Drawing No. ETA-1_Sheet R107	m	1751		
11		Excavation for catchwater banks	m <sup>3</sup>	177		
13		Allow Provisional Sum of R150 000 for re-location of fences, gates and other small structures	Prov Sum	1	150,000.00	
14		% Profit and attendance on item 13	%			
15		Excavate for foundations to spoil	m <sup>3</sup>	99		
16		Extra over excavation for hard material	m <sup>3</sup>	330		
17		Concrete bases (25/19)	m <sup>3</sup>	1593		
18		Steel reinforcement - Mesh Ref 395	kg	15		
19		Cement Stabilized Backfill (Min. UCS 1.5 - 3.0 MPa). Inclusive of all labour, plant and materials.	m <sup>3</sup>	389		
22		Terrace Block - Type TB490 Blocks as per Drawing No ETA-1B_Sheet 43	m <sup>2</sup>	814		
23		170 x 170 Stone wrapped in Bidim with 40mm diameter pipe	no	65.00		
		PART F PROTECTION WORKS				
<b>TOTAL CARRIED FORWARD to Page 76</b>						

Item	Clause	Bill description	Unit	Qty	Rate	Amount
		PART PG NON-PRESSURE PIPELINES and PC CULVERTS				
		<b>TOTAL BROUGHT FORWARD From Page 75</b>				
2	PG 8.2	Supply and lay 375 mm diameter concrete Class 50D	m	417		
5		Supply and lay 450 mm diameter concrete Class 50D	m	510		
8		110 mm diameter uPVC cable ducts	m	127		
9		160 mm diameter uPVC cable ducts	m	154		
10		230 mm brickwork to cable duct headwalls or sump	m <sup>2</sup>	627		
12		100mm diameter PVC sub-soil drains in 300x300 crushed stone surround complete wrapped in u14 Bidim and backfilled with clean coarse sand. Inclusive of all labour, plant and materials	m	208		
13		Grade 15/26 concrete to anchor blocks	m <sup>3</sup>	23		
14	PG 8.11.3	Cable duct markers	No.	58		
15		Additional Stormwater Control for Properties	Prov Sum	1	250,000.00	
16		% Profit and attendance on item 15	%			
		PART PG NON-PRESSURE PIPELINES and PC CULVERTS				
<b>TOTAL CARRIED FORWARD to Page 77</b>						

Item	Clause	Bill description	Unit	Qty	Rate	Amount
		PART PH MANHOLES and APPURTENANT WORKS				
		<b>TOTAL BROUGHT FORWARD From Page 75</b>				
1	PH 8.3	Standard inlet type S1. Depth Over 1.5 m and not exceeding 2.0 m	No.	7190		
3	PH 8.3	Standard inlet type S2. Depth Over 0 m and not exceeding 1.5 m	No.	8699		
4	PH 8.3	Standard inlet type S2. Depth Over 1.5 m and not exceeding 2m	No.	10043		
5	PH 8.3	Standard inlet type S2. Depth Over 2 m and not exceeding 2.5m	No.	11387		
6		Standard inlet type D3. Depth Over 1.5 m and not exceeding 2 m	No.	12975		
9		Manhole type A with light duty concrete cover. Depth Over 0,0 m and not exceeding 1,5 m	No.	8364		
10		Manhole type A with light duty concrete cover. Depth Over 2.5 m and not exceeding 3.0 m	No.	13924		
13		Extra over item 12-16 for supply of new heavy-duty cast-iron manhole cover and frame	No.	3212		
14		Extra over item 12-16 for supply of new heavy duty concrete manhole cover and frame	No.	420		
15		Construct standard outlet headwall for 375 mm dia. Pipe. Standard drawing no. 38576, including excavation and backfilling	No.	5910		
16		Construct standard outlet headwall for 450 mm dia. Pipe. Standard drawing no. 38576, including excavation and backfilling	No.	6030		
17		Open channel inlet. Depth Over 0,0 m and not exceeding 1,5 m (As per detail: Drawing No. ETA-1B_Sheet R43)	No.	28309		
		PART PH MANHOLES and APPURTENANT WORKS				
<b>TOTAL FOR SECTION 3 CARRIED FORWARD TO SUMMARY</b>						

Item	Clause	Bill description	Unit	Qty	Rate	Amount
		<b>SECTION 4: PLATFORMS</b>				
		PART DA EARTHWORKS: BULK				
1	DA 8.2	Excavate 100mm topsoil under platforms to stockpile	m <sup>3</sup>	31		
2	DA 8.5	Cut to fill to form platforms compacted to 95 % Mod AASHTO	m <sup>3</sup>	217		
3		Topsoiling from stockpile	m <sup>3</sup>	145		
6		Hydroseeding to embankments	m <sup>2</sup>	9		
16		Import G7 material from contractor's off-site or commercial source inclusive of haulage and royalties	m <sup>3</sup>	181		
17		Compact G7 material to 95% Mod AASHTO	m <sup>3</sup>	71		
<b>TOTAL FOR SECTION 4 CARRIED FORWARD TO SUMMARY</b>						

Item	Clause	Bill description	Unit	Qty	Rate	Amount
		<b>SECTION 5: FOUNDATIONS AND SLABS</b>				
		PART C CONCRETE				
1		Excavate for foundations to spoil	m <sup>3</sup>	457		
2		Extra over excavation for hard material	m <sup>3</sup>	7		
3		Grade 25/26 concrete in beams	m <sup>3</sup>	2488		
4		100mm shutter exposed side (Class 3 - Smooth)	m <sup>2</sup>	547		
5		Grade 25/26 concrete in 100mm/150mm thick slabs with power load finish including supply and application of approved ant poison under slabs.	m <sup>3</sup>	2563		
6		Grade 20/26 - 600mm x 600mm concrete in pads	m <sup>3</sup>	2303		
7		High tensile steel fabric reinforcement ref: 100	kg	39		
8		High tensile steel reinforcement	t	16376		
9		Damp Proof Membrane - 250 micron	m <sup>2</sup>	11		
		<b>SECTION 5: FOUNDATIONS AND SLABS</b>				
<b>TOTAL FOR SECTION 5 CARRIED FORWARD TO SUMMARY</b>						



Item	Clause	Bill description	Unit	Qty	Rate	Amount
		SECTION 6: SEWERAGE				
		PART DB EARTHWORKS FOR PIPE TRENCHES				
1	DB 8.5	Excavate, backfill and lay in all material 110mm dia. Sewer connection from rodding eye to house. Depth 0,0-1,5m	m	108		
2		Excavate and backfill in all material for 160 mm diameter pipe where depth is Over 0 m and not exceeding 1,5 m	m	164		
3		Excavate and backfill in all material for 160 mm diameter pipe where depth is Over 1,5 m and not exceeding 2,0 m	m	197		
4		Excavate and backfill in all material for 160 mm diameter pipe where depth is Over 2,0 m and not exceeding 2,5 m	m	269		
10	DB 8.6	Extra over for hard excavation	m <sup>3</sup>	348		
11		Extra over items for rock excavation	m <sup>3</sup>	3		
12	DB 8.8	Excavate unsuitable material from trench bottom.	m <sup>3</sup>	76		
13		Extra over item 1-10 for restricted excavation and backfill	m <sup>3</sup>	89		
14		Placing and compacting of selected flexible pipe bedding for 110 mm dia. Pipe.(provisional)	m	7		
15		Placing and compacting of selected flexible pipe bedding for 160 mm dia. pipe.	m	7		
17		Extra over items 14 & 15 for selected bedding material from borrow	m <sup>3</sup>	132		
		PART DB EARTHWORKS FOR PIPE TRENCHES				
<b>TOTAL CARRIED FORWARD to Page 81</b>						

Item	Clause	Bill description	Unit	Qty	Rate	Amount
		PART PG NON-PRESSURE PIPELINES and PC CULVERTS				
		<b>TOTAL BROUGHT FORWARD From Page 80</b>				
1	PG 8.2	Supply and lay 110 mm diameter uPVC pipe.	m	85		
2	PG8.3	Supply and install 45 deg. Bend on 110mm dia. HD uPVC pipe. (prov)	no.	78		
3		Supply and install 90 deg. Bend on 110mm dia. HD uPVC pipe. (prov)	no.	78.		
5		Supply and install property terminal connection to detail, inclusive of concrete, junctions, rodding eye and endcap with slab. (Drawing No. ETA-1_Sheet R107)	no.	820		
7		Supply and lay 160 mm diameter HD uPVC (class 34)	m	183		
		PART PG NON-PRESSURE PIPELINES and PC CULVERTS				
		PART PH MANHOLES AND APPURTENANT WORKS				
1	PH 8.3	Standard precast class A concrete ring manhole... Light duty cover and frame - Over 0,0 m and not exceeding 1,5 m. Standard Drawing	No.	4399		
2		Standard precast class A concrete ring manhole. Light duty cover and frame - Over 1,5 m and not exceeding 2,0 m	No.	5346		
3		Standard precast class A concrete ring manhole. Light duty cover and frame - Over 2,0 m and not exceeding 2,5 m	No.	6510		
11	PH 8.7	E.O. items 1 - 7 for heavy duty concrete cover and frame	No.	263		
12		Break into existing concrete manhole wall for [100 -400] mm diameter pipe and make good	No.	2527		
13		Raise/lower existing manhole with concrete cover and frame in unpaved area by: 0 to 500 mm	No.	947		
		PART PH MANHOLES AND APPURTENANT WORKS				
		SECTION 6: SEWERAGE				
<b>TOTAL FOR SECTION 6 BROUGHT FORWARD TO SUMMARY</b>						

Item	Clause	Bill description	Unit	Qty	Rate	Amount
		<b>SECTION 7: WATER RETICULATION</b>				
		PART DB EARTHWORKS FOR PIPE TRENCHES				
1	DB 8.5	Excavate and backfill in all material for 22-54mm pipe Depth >0.5 to 1.0m(Provisional)	m	53		
2		Excavate and backfill in all material for 22-54mm pipe Depth >1.0 to 1.5m (Provisional)	m	93		
3		Excavate and backfill in all material for 75mm dia. pipe. Depth >1,0 to 1,5m	m	128		
4		Excavate and backfill in all material for 75mm dia. pipe. Depth >1,5 to2.0m (Provisional)	m	128		
7	DB 8.6	Extra over items 1-4 for hard excavation	m <sup>3</sup>	82		
8		Extra over items 1-4 for rock excavation	m <sup>3</sup>	262		
10		Compaction of backfill to 95% MASTHO density in road crossings were directed	m <sup>3</sup>	25		
12	DB 8.9	Provision of pipe bedding material from borrow (Provisional)	m <sup>3</sup>	32		
13	DB .10	Placing and compacting flexible pipe bedding to 22-54mm dia. PC pipes	m	3		
14		Placing and compacting flexible pipe bedding to 75mm dia. mPVC pipes	m	4		
17		Provision of pipe bedding material from commercial sources (Provisional)	m <sup>3</sup>	368		
		PART DB EARTHWORKS FOR PIPE TRENCHES				
<b>TOTAL CARRIED FORWARD to Page 83</b>						

Item	Clause	Bill description	Unit	Qty	Rate	Amount
		PART PF PRESSURE PIPELINES: OTHER THAN STEEL				
		<b>TOTAL BROUGHT FORWARD From Page 82</b>				
		PIPES AND PIPE FITTINGS TO BE SUPPLIED BY COUNCIL				
2		50mm dia. Class 12 HDPE pipe	m	48		
3		75mm diam Class 12 mPVC pipe	m	55		
5		75mm flange adaptor to mPVC pipe	no.	27		
6		75x75X75 flanged Tee	no.	34		
7		75x75x75 hydrant Tee	no.	34		
8		75mm flanged waterworks valves	no	257		
9		75 -50mm brass reducer	no	27		
10		ALPRENE 50x50x50 Tee to HDPE pipe	no	25		
11		50x90 degree HDPE elbow	no	25		
12		50-25 HDPE reducer	no	25		
13		Magnum saddle on 75mm diam. mPVC pipe for 22mm stand connection	no	34		
16		Fire hydrants complete with bend, valve, flange bolts and extension complete as per detail as per Drawing No. 52697_Sheet 3.	no	1572		
17		Collect and install valve box with rings and cover complete to detail as per Drawing No. 52697_Sheet 3.	no	262		
18		Collect valve marker posts and set in concrete	no	170		
21		Supply and fit set of bolts, nuts, washers plus gasket for 75mm flange.	set	110		
22		Sterilisation of pipeline- 2940mx75 + 2430mx54 + 50mx150	sum	13948		
23		Collect necessary end caps, blank flanges, saddle, ferrule & plugs, spade pieces or other fittings and pressure test reticulation system (13000m) at 1200 kPa.	sum	177000		
24		Grade 15/26 concrete to anchor/thrust blocks	m <sup>3</sup>	2,551		
26		Provide for returning all excess pipes and fittings to Council Springfield stores.	sum	6874		
29		54mm flanged waterworks valves	no	129		
32		150x150x150 flanged tee	no	129		
34		50mm flange adaptor to mPVC pipe	no	86		
35		75mm x 50mm BSP male adaptor	no	86		
36		110-75mm brass reducer	no	86		
		SECTION 7: WATER RETICULATION				
		EXTENSION ESTIMATE TOTAL				
<b>TOTAL FOR SECTION 7 CARRIED FORWARD TO SUMMARY</b>						

Item	Clause	Bill description	Unit	Rate	Qty	Amount
		<b>TOP STRUCTURES</b>				
	C 8.1	PART C: CONCRETE WORK				
1		Provisional Sum for construction of Superstructures of the units by Local Sub-Contractors	Prov Sum	1.00	8,500,000.00	8,500,000.00
2		Profit and attendance on item 1	%			
		PART C: CONCRETE WORK				
		TOP STRUCTURES				
<b>TOTAL FOR TOP STRUCTURES CARRIED FORWARD TO SUMMARY</b>						

<b>DESCRIPTION</b>	<b>AMOUNT (R)</b>
SECTION 1: PRELIMINARY AND GENERAL	
PART AB: GENERAL SPECIFICATIONS	
PART AH OCCUPATIONAL HEALTH and SAFETY	
SECTION 2: SITE CLEARANCE	
SECTION 3: ROADWORKS	
SECTION 4: PLATFORMS	
SECTION 5: FOUNDATIONS AND SLABS	
SECTION 6: SEWERAGE	
SECTION 7: WATER RETICULATION	
PART C: CONCRETE WORK - TOP STRUCTURES	
<b>SUB-TOTAL (A)</b>	
<b>ADD – 10% CONTINGENCIES</b>	
<b>SUB-TOTAL (B)</b>	
<b>ADD – 8% ESCALATION</b>	
<b>SUB-TOTAL (C)</b>	
<b>ADD – 15% VAT</b>	
<b>TOTAL AMOUNT TO FORM OF OFFER</b>	

**NB//** Tendered price to be taken to C1.1 Form of Offer and Acceptance on Page 52

---

**PART C3: SCOPE OF WORK**

		<b><u>PAGE</u></b>
<b>C3.1</b>	<b>PROJECT DESCRIPTION AND SCOPE OF CONTRACT</b>	<b>87</b>
<b>C3.2</b>	<b>PROJECT SPECIFICATIONS</b>	<b>93</b>
	PS.1 Programme, Method of Work, and Accommodation of Traffic	
	PS.2 Services	
	PS.3 Watermains	
	PS.4 Sewers	
	PS.5 Stormwater	
	PS.6 Electrical Plant	
	PS.7 Telkom S.A. Limited / Neotel Plant	
	PS.8 CCTV Plant	
	PS.9 Management of the Environment	
	PS.10 Occupational Health and Safety	
<b>C3.3</b>	<b>STANDARD SPECIFICATIONS</b>	<b>108</b>
	C3.3.1 Listing of the Standard Specifications	
	C3.3.2 Amendments to the Standard Specifications	
<b>C3.4</b>	<b>PARTICULAR SPECIFICATIONS</b>	<b>111</b>
	C3.4.1 Part AH - OHS 1993 Safety Specification (2014)	
	C3.4.2 Standard Environmental Management Plan for Civil Engineering Construction Works	
<b>C3.5</b>	<b>CONTRACT AND STANDARD DRAWINGS</b>	<b>112</b>
	C3.5.1 Contract Drawings / Details	
	C3.5.2 Standard Drawings	
<b>C3.6</b>	<b>ANNEXURES</b>	<b>113</b>

---

### **C3.1: PROJECT DESCRIPTION AND SCOPE OF CONTRACT**

#### **C3.1.1 Description of Works**

The contract covers the provision of civil engineering services, earthworks, platforms and structural foundations for approximately 450 new residential sites and units within the existing Etafuleni Housing Project.

#### **C3.1.2 Description of Site and Access**

Etafuleni Housing project is located in the Northern Region of eThekweni Municipality on coordinates 29° 40' 22.97" S and 30° 57' 13.69" E, within Wards 56 and 53. The site is approximately 34km from Durban CBD via N2 North route and then turn left onto M25 (Curnick Ndlovu Hwy) turning left at the roundabout and continue straight to M25 and then turning left to Mafukuzela Hwy. Access to site is through the surfaced road M25 Mafukuzela Highway turning right to Cemetery Road, [refer to Item C4.1: Locality Sketch](#).

#### **C3.1.3 Nature of Ground and Subsoil Conditions**

See attached Geotechnical report



## C.3.1.4 Scope of Works

Title	Construction of ETafuleni Housing Project, Housing & Infrastructure
TOPIC	COMMENTARY
<b>Client's / employer's objectives</b>	<p>The development aims at upgrading the living conditions of people residing in ETafuleni Housing Project Informal Settlement by providing them with formal low-cost houses and basic services in line with National Housing Act 4 of 2001.</p> <p>The contract covers the provision of civil engineering services, earthworks, platforms and structural foundations for approximately 450 new residential units within the existing ETafuleni Housing Project</p>
<b>Description of the services</b>	<p>The works to be constructed consists of earthworks for roads and platforms, retaining walls, pedestrian accesses asphalt surfaced roads, stormwater drainage on the roads and platforms, water and sewerage reticulation networks and the connection of these networks to existing bulk services.</p> <p>The project scope will be done in a single phase. The contractor is required to programme construction activities such that are constructed in such a manner as not to cause any contractual claims and delays.</p> <p>The contractor shall at the onset of the contract locate and identify all obstructions and report to the engineer immediately. The contractor shall bypass construction areas affected by obstructions. These areas are to be revisited once the obstructions are removed.</p> <p>The construction of top structures will be carried out by several other contractors during the course of the civil infrastructure contract and hence the Civil Contractor shall provide reasonable access to other contractors and service authorities as and when required. As the main contractors 'staff and laborer's regarding health and safety risks on site.</p> <p>The contractor will be required to complete the following</p> <ul style="list-style-type: none"> <li>• Stormwater reticulation</li> <li>• Sewer reticulation</li> <li>• Water reticulation</li> <li>• Bulk earthworks for roads</li> <li>• Layerworks and surfacing</li> <li>• Bulk earthworks for platforms</li> <li>• Structural foundations (392 sites); and</li> <li>• Top structures</li> </ul> <p>The consultant will provide all setting out information and relevant data for the contractor to accurately construct the works. The contractor is to also provide services for demolishing existing informal structures, as well as decommissioning any pit latrines on the site. Such allowances have been made for in the Bill of Quantities</p> <p>The contractor is to note that the construction shall require decanting the existing residents. After decanting, the existing dwellings will then be demolished.</p>
<b>Use of reasonable skill and care</b>	<p>The contractor is required to exercise reasonable skill and care at all times. Furthermore, special conditions and regulations relating to the Environmental Authorization (ROD, Water Use License (WULA), Health &amp; Safety (Occupational Health and Safety Act No 85 and Amendment Act No 181 of 1993) and conditions of establishment needs to be adhered to throughout the duration of the contract.</p>
<b>Co-operation with other services providers</b>	<p>All interaction with various departments such as Water and Sanitation, Electricity, Telkom and Neotel are to run parallel to construction works should any existing services be affected.</p>

<b>Title</b>	<b>Construction of ETafuleni Housing Project, Housing &amp; Infrastructure</b>
<b>TOPIC</b>	<b>COMMENTARY</b>
<b>Brief</b>	As outlined in this tender document; Time for achieving practical completion on the scope of works is 36 months; The contractor is required to submit monthly progress reports, inclusive of photographs and up-to-date detailed program
<b>Reference data</b>	<ul style="list-style-type: none"> <li>• Geotechnical report</li> <li>• eThekweni Standard Specifications (Section C3.4)</li> <li>• eThekweni Standard Drawing Details</li> <li>• Scope of Works (refer to scope of works mentioned above)</li> <li>• Electronic Book of Drawings (Issued with this tender document – Cd)</li> </ul>
<b>Applicable national and international standards</b>	<ul style="list-style-type: none"> <li>• SAICE GCC 2015 Conditions of Contract</li> <li>• CIDB Conditions of Tender (2015)</li> <li>• eThekweni Standard Engineering Specifications</li> </ul>
<b>Particular/Generic specifications</b>	<ul style="list-style-type: none"> <li>• The contractor's attention is drawn to section C.3.2 (Project Specifications)</li> <li>• The contractor's attention is drawn to section C.3.3.2 (Amendments to Particular Specifications)</li> <li>• The contractor's attention is drawn to section 3.4 of this tender document</li> </ul>
<b>Approvals</b>	The Contractor is to obtain approval in writing from the Engineer prior to commencing any works that deviate from drawings and/or specifications. Such Approvals are to be appropriately documented in a Site Instruction Book issued by the Employer's Agent; The Contractor is to take note that all as-built records shall be maintained and reviewed monthly by the Engineer. The Engineer shall then provide his acceptance/declination of the as-built results to permit payment for such works constructed. In the event of the declination of test results by the Engineer, the Contractor shall be paid out 50% of the monetary value of the failed works until such time corrective measures are completed. This shall apply to all works, i.e. road layer works and surfacing, bulk earthworks, sewer reticulation, stormwater reticulation, water reticulation, structural foundations and top structures. No alternative arrangement shall be entertained from the contractor.
<b>Procurement</b>	<ul style="list-style-type: none"> <li>• The attention of the Contractor is drawn to clause F.3.11(Evaluation of Tenders). After satisfying the minimum qualification criteria under the functionality items, Method 1 will be employed to further adjudicate the contractor's bid submission.</li> <li>• In addition, the contractor will be required to employ sub-contractors as part of the CPG component detailed in this document. Such procurement shall be done through the Wards' existing business forum together with the Ward Councilor and CLO. A CPG plan will be required from the appointed contractor within 1 month of commencing construction and shall detail the different activities intended for sub-contracting.</li> <li>• The procurement of any local labour shall be done through the CLO and shall be agreed by the Ward Councilor. A letter shall be provided.</li> </ul>
<b>Access to land / buildings / sites</b>	Access to the site approximately 34km from Durban CBD via N2 North route and then turn left onto M25 (Curnick Ndlovu Hwy) turning left at the roundabout and continue straight to M25 and then turning left to Mafukuzela Hwy.

Title	Construction of ETafuleni Housing Project, Housing & Infrastructure
TOPIC	COMMENTARY
<b>Planning and programming</b>	<p>i) Preliminary Programme With reference to Clause 3.11.9 (Quality Criteria) and returnable form “Preliminary Programme”, the tenderer is required to submit a basic preliminary programme in a gantt chart format. This programme shall take cognizance of the scope of works and shall be based on the specified time for achieving practical completion as outlined in clause 1.1.1.14 of the Contractual Data. Alternative completion times will only be considered if the tenderer duly indicates the details thereof on returnable form “Amendments, Qualifications and Alternatives”.</p> <p>ii) Construction Programme The successful tenderer shall submit a construction programme, for approval, in terms of the requirements outlined in Clause 5.6 of GCC 2015 within the timeframe specified in Clause 5.3.2 of the Contract Data. Regarding the contents of the programme, specific reference shall be made to Clause 5.3.2 and the contractor shall be responsible for indicating sufficient detail which reflects the sequence and extent of works, specific inspections, all milestones, the critical path, and other pertinent requirements of the scope of work. The construction programme shall be subject to review on a monthly basis or at the discretion of the Engineer and Employer.</p>
<b>Software application for programming</b>	For ease of submission and uniformity, it is a requirement that the construction programme be prepared by the successful tenderer using Microsoft Project or the like. Additionally, the final programme shall be provided in a .pdf format to the Employer’s representative.
<b>Quality management</b>	The successful tenderer shall implement specific quality control measures to ensure that the works are constructed as per the standard specifications, project specifications and construction drawings. The Quality Control Statement shall be attached to returnable form “Construction Approach, Methodology and Quality Control” and reference shall be made to site control testing, construction supervision, structured monitoring mechanisms such as checklists and other measures/processes that the tenderer deems to be significant. The Engineer will continually assess the quality of works on site and instructions will be provided for non-compliance accordingly.
<b>Format of communications</b>	<ul style="list-style-type: none"> <li>Each instruction, certificate, submission, proposal, record, acceptance, notification, reply and other communication which this contract requires is to be communicated in a form which can be read, copied, and recorded. Writing is to be in the language of this contract, i.e. English.</li> </ul> <p>The contractor is to only receive instructions from the Employers Agent or the Employers Agent Representative. Should the contractor undertake any works from an instruction given to him/her by a third party, he will be solely responsible for any impacts thereof, including costs.</p>
<b>Key personnel</b>	The format for key personnel as illustrated under Section T2 (Returnable) is to be followed and carried through to the bidder’s format for Key Personnel. This is to be looked at in conjunction with section F3.11.9 (Quality Criteria for Key Personnel). It is noted at this juncture that at the commencement of construction, the key personnel will change for unforeseen reasons. In this case, the contractor shall provide a suitable replacement which will have similar experience for respective projects as the originally proposed individual at time of tender. Further discussions are to be held with the Employer and Employer’s agent as this is situation specific.

Title	Construction of ETafuleni Housing Project, Housing & Infrastructure
TOPIC	COMMENTARY
<b>Management meetings</b>	<p>There will be a minimum of one (1) progress meeting and one (1) technical meeting per month. The contractor is to ensure that the Contracts Manager and Site Agent are present during both meetings. CLOs will be required to attend all progress meetings and both CLOs will be required to be present when works are being discussed. This is over and above all meetings that the Contractor may deem necessary for the execution of the works.</p>
<b>Forms for contract administration</b>	<p>The contractor will be provided with suitable reporting formats by the consultant at the commencement of construction. These reports detail the contractors progress, all subcontractors on site, Health and Safety audit findings, Environmental Audit findings, plant and machinery on site and an organogram specific for the site of works.</p> <p>These reports will have to be presented at the monthly progress meeting. Minutes of all meetings, however, will be drafted by the Resident Engineer.</p>
<b>Electronic payments</b>	<p>Arrangements for electronic payment of payment certificates will be made between the Contractor and Employer during the Site Handover Meeting.</p>
<b>Daily records</b>	<p>It is a requirement that a site diary with all relevant details be maintained on site. This diary must be signed off and agreed to by both the Engineer and Contractor, daily. These site diaries must accompany the Contractor's monthly payment certificates and payment shall not be processed should this not be complied with.</p> <p>A suitable format of the site diary will be made available to the successful tenderer, by the Client.</p>
<b>Professional indemnity insurances</b>	<p>Not applicable.</p>
<b>Payment certificates</b>	<p>Payment certificates are to reach the Client by the 25th of each month. The following items are to accompany each payment certificate, but shall not be limited to the list below:</p> <ul style="list-style-type: none"> <li>• Tax Invoice – Tax invoice number, Contract number, Project Description, correctly dated, to include both the Client's and contractor's Tax numbers, physical and postal addresses and to be addressed to Deputy Head, Development Engineering.</li> <li>• Fully completed FTE's (Client to provide format).</li> <li>• Summary of supporting measurements for period of claim – to be signed off by both the Contractor and Engineer.</li> </ul>
<b>Use of documents by the employer</b>	<p><b>As-built drawings:</b> The client will employ the as-built drawings in order to carry out any necessary maintenance to the reticulation systems being installed under this contract. In addition, this as-built data may be used to determine future connection points should further development around the site occur. It is imperative that the surveyor provides accurate positions, invert, and cover levels so that the Engineer is able to accurately reproduce the installed reticulation systems.</p>

Title	Construction of ETafuleni Housing Project, Housing & Infrastructure
TOPIC	COMMENTARY
<b>Property provided for the Consultant's use</b>	<p>Two fully furnished offices with 4 undercover parking bays are required for the use of the Engineer's Representative.</p> <p>Office Size: 2 x 15m<sup>2</sup> (burglar proofing to all openings and a 1m concrete covered walkway in the front of the office)</p> <p>Electricity: Single Phase: 4 x plug points 4 x fluorescent overhead lights 2 x 12 000 Btu split air conditioner units</p> <p>Tables and Chairs: 3 x wooden table 1,8x1,0m with 2x drawers each (one lockable) 1 x wooden plans table 2,0x1,2m 2 x steel filing cabinet with 4x lockable drawers 1 x Drawing table stool 5 x steel and material combination chairs</p> <p>Other: 2 X fire extinguishers</p> <p>Parking bays 4 X 3, 0 X 5,0m. If shade cloth is used, to be at least 70% UV protection</p> <p>Floodlighting Floodlights to be erected for camp site, which are to be controlled by a photocell for security purposes at the Engineer's Representative's offices</p> <p>The Contractor shall provide four shaded car ports within the secured site camp for the sole use of the Engineer Representative's staff.</p> <p>The Contractor shall provide one meeting room large enough to be furnished with a large table and chairs to seat 15 people. The meeting room shall also be furnished with pin boards suitable to pin up three A0 drawings and a white board of about 1,5m<sup>2</sup> and markers. The contractor's attention is drawn to the COVID-19 Health and Safety Regulations in respect of the meeting venues.</p>
<b>Proof of compliance with the law</b>	<ul style="list-style-type: none"> <li>• Valid Tax Clearance Certificate at Tender Closing</li> <li>• Proof of Company/CC/Partnership Registration</li> <li>• Proof of JV agreement and registration (if applicable)</li> <li>• Identity Documents of Directors/Members/Partners</li> <li>• Municipal Fees for Proof of Address</li> <li>• CIDB Registration</li> </ul>
<b>ANNEXURES</b>	<ul style="list-style-type: none"> <li>• Notice Board</li> <li>• Locality (C.4.1).</li> <li>• Site Conditions (C.4.2).</li> <li>• Geotechnical Data (C.4.2 and attached CD issued); and</li> <li>• Book of Drawings (CD attached)</li> <li>• Health and Safety Risk Assessment and Specification</li> <li>• eThekweni Municipality COVID-19 Health and Safety Specifications</li> </ul>

## **C3.2: PROJECT SPECIFICATION**

### **PREAMBLE**

In the event of any discrepancy between a part or parts of the Standard or Particular Specifications and the Project Specification, the Project Specification shall take precedence. In the event of a discrepancy between the Specifications, (including the Project Specifications) and the drawings and / or the Bill of Quantities, the discrepancy shall be resolved by the Employer's Agent before the execution of the work under the relevant item.

### **C3.2.1 GENERAL**

#### **PS.1 PROGRAMME, METHOD OF WORK, AND ACCOMMODATION OF TRAFFIC**

This Clause is to be read in conjunction with the provisions and obligations as contained in **SANS 1921-1 and SANS 1921-2**.

##### **PS.1.1 Preliminary Programme**

The Contractor shall include with his tender a preliminary programme on the prescribed form (see **T2.2: Preliminary Programme**) to be completed by all Tenderers. The programme shall be in the form of a simplified bar chart with sufficient details to show clearly how the works will be performed within the time for completion as stated in the Contract Data.

Tenderers may submit tenders for an alternative Time for Completion in addition to a tender based on the specified Time for Completion. Each such alternative tender shall include a preliminary programme similar to the programme above for the execution of the works, and shall motivate his proposal clearly by stating all the financial implications of the alternative completion time.

The Contractor shall be deemed to have allowed fully in his tendered rates and prices as well as in his programme for all possible delays due to normal adverse **weather conditions** (refer to **Clause 5.12.2.2**) and special non-working days (refer to **Clause 5.1.1.1**) as specified in the in the Contract Data.

##### **PS.1.2 Programme in Terms of Clause 5.6 of the General Conditions of Contract**

It is essential that the construction programme, which shall conform in all respects to **Clause 5.6 of the General Conditions of Contract**, be furnished within the time stated in the Contract Data (refer to **Clause 5.3.1/2**).

The preliminary programme to be submitted with the tender shall be used as basis for this programme.

The Tenderer's attention is drawn to the fact that a number of factors will affect the programming of and method of carrying out the works. The more important of these are:

- (1) Time required for service relocations.
- (2) Time allowances to be made for the ordering of special items.
- (3) Notification required by service organisations.

- (4) Any special sequence in which work must be carried out. Must certain areas of work be finished before work commences on others?
- (5) If delays are anticipated with service relocations the contractor should be asked to allow time.
- (6) Is work required out of normal hours? (eg. to accesses).
- (7) Vehicular access to private property is to be maintained.
- (8) Traffic restrictions.

Those known, existing services in the area of the works have been depicted on the contract drawings. It is evident, however, that the status of existing service records as far as can be ascertained might not reflect the actual situation in the field. As such, due allowance has been made in the Bill of Quantities for the proving of services where directed by the Engineer.

### **PS.1.3 Requirements for Accommodation of Traffic**

#### **PS.1.3.1 General**

Accommodation of traffic, where applicable, shall comply with **SANS 1921-2: 2004: Construction and Management Requirements for Works Contracts, Part 2: Accommodation of Traffic on Public Roads occupied by the Contractor**. The Contractor shall obtain this specification from Standards South Africa if accommodation of traffic will be involved on any part of the construction works.

**Clause 4.10.4 of SANS 1921-2: 2004** shall be replaced with the following:

“Road signs and markings shall comply with the requirements of the **“SADC Road Traffic Signs Manual - Volume 2: Roadworks Signing”**”.

#### **PS.1.3.2 Basic Requirements**

The travelling public shall have the right of way on public roads, and the Contractor shall make use of approved methods to control the movement of his equipment and vehicles so as not to constitute a hazard on the road.

The Contractor shall ensure that all road signs, barricades, delineators, flagmen and speed controls are effective, and that courtesy is extended to the public at all times.

Failure to maintain road signs, warning signs or flicker lights, etc, in a good condition shall constitute ample reason for the Employer’s Agent to suspend the work until the road signs, etc, have been repaired to his satisfaction.

The Contractor may not commence constructional activities affecting existing roads before adequate provision has been made to accommodate traffic in accordance with the requirements of this document and the South African Road Traffic Signs Manual.

The Contractor shall construct and maintain all temporary drainage works necessary for temporary deviations. The Contractor shall ensure that the existing property accesses are maintained at all times. Where necessary the Contractor shall make allowance in the rates for completing the work required to the accesses out of normal hours.

#### **PS.1.3.3 Traffic Safety Officer**

Where warranted by traffic conditions on or near the site, the Contractor shall nominate a suitable member of his staff as traffic safety officer to be responsible for the arrangement and maintenance of all the measures for the accommodation of traffic for the duration of the project. Duties of the traffic safety officer shall be in compliance with the Occupational Health and Safety Act 1993 and the Construction Regulations 2014.

#### **PS.1.3.4 Payment**

The Contractor's tendered rates for the relevant items in the Bill of Quantities shall include full compensation for all possible additional costs which may arise from this, and no claims for extra payment due to inconvenience as a result of the modus operandi will be considered.

#### **PS.1.3.5 Pedestrian Movement**

The Contractor shall make provision for accommodating all pedestrian movements in the area of the works. Allowance shall be made in the relevant rates for any barricades and signs required.

#### **PS.1.3.6 Temporary Reinstatement**

Provided always that if in the course or for the purpose of the execution of the works or any part thereof any road or way shall have been broken up, then notwithstanding anything herein contained:

- (a) if the permanent reinstatement of such road or way is to be carried out by the appropriate authority or by some person other than the contractor (or any subcontractor to him), the contractor shall at his own cost and independently of any requirement of or notice from the Engineer be responsible for the making good of any subsidence or shrinkage or other defect, imperfection or fault in the temporary reinstatement of such road or way, and for the execution of any necessary repair or amendment thereof from whatever cause the necessity arises, until the end of the period of maintenance in respect of works beneath such road or way until the authority or other person as aforesaid shall have taken possession of the site for the purpose of carrying out permanent reinstatement (whichever is the earlier), and shall indemnify and save harmless that Council against and from any damage or injury to the Council or to third parties arising out of or in consequence of any neglect or failure of the Contractor to comply with the foregoing obligations or any of them and against and from all claims, demands, proceedings, damages, costs, charges and expenses whatsoever in respect thereof or in relation thereto.
- (b) where the authority or person as aforesaid shall take possession of the site as aforesaid in sections or lengths, the responsibility of the contractor under paragraph (a) of this sub-clause shall cease in regard to any such section or length at the time possession thereof is so taken, but shall during the continuance of the said period of maintenance continue in regard to any length of which possession has not been taken and the indemnity given by the contractor under the said paragraph shall be construed and have effect accordingly.

### **PS.2 SERVICES**

This Clause is to be read in conjunction with the provisions and obligations as contained in **SANS 1921-1 and SANS 1921-2**.

#### **PS.2.1 Existing Services**



The Tenderer's attention is drawn to the numerous existing services in the area. Although every effort has been made to depict these services accurately the positions shown must be regarded as approximate.

## **PS.2.2 Proving Underground Services**

This clause must be read in conjunction with **Clause DB.5.1.2**, the requirements of which shall be extended to cover all earthworks operations whether for trenching or bulk earthworks, in the vicinity of underground services.

It is stressed that all services in a particular area must be proven before commencing work in that area.

Insofar as bulk earthworks are concerned, where services are indicated on the drawings or where from site observations can reasonably be expected that such services are likely to exist where excavations are to take place, the Contractor shall without instructions from the Employer's Agent carefully excavate by hand to expose and prove their positions.

The cost of the proving trenches is to be included in the work covered by **Clause DA.8.3**.

When a service is not located in its expected position the Contractor shall immediately report such circumstances to the Employer's Agent who will decide what further searching or other necessary action is to be carried out and shall instruct the Contractor accordingly. The cost of this additional searching shall be to the Council's cost and shall be paid for under **DB.8.19 - Proving Existing Services**.

Should any service be damaged by the Contractor in carrying out the works and should it be found that the procedure as laid down in this clause has not been followed then all costs in connection with the repair of the service will be to the Contractor's account.

When electrical cables are not in the positions shown on drawings of eThekweni Electricity and cannot be found after proving trenches have been put down, assistance may be obtained by calling an official of the **Works Branch on Telephone No. 311-1111** during office hours, or by contacting **Control on Telephone No. 305-7171** after hours.

It should be noted that 33,000 Volt and 132,000 Volt cables may only be exposed by the eThekweni Electricity's personnel. The cables are usually protected by concrete covering slabs, and therefore if the slabs are inadvertently exposed, excavation work must stop, and the eThekweni Electricity shall be contacted immediately on the above telephone numbers.

Proving of services shall be completed at least two weeks in advance of the actual programmed date for commencing work in the area. The position of these services located must be coordinated and levelled by the Contractor, and the information given in writing to the Employer's Agent's Representative.

The requirements of this clause do not relieve the Contractor of any obligations as detailed in the Conditions of Contract or under **Clause 4.17 of SANS 1921-1**.

## **PS.2.3 New Services and Relocation of Existing**

This clause shall be read in conjunction with **Clause PS.1**.

New services are either to be installed by the Contractor as part of the contract or by others during the contract period. In the latter case excavation and subsequent backfilling of the trench from the top of the bedding layer shall generally be carried out by the Contractor.

Relocation of services shall generally be carried out by the relevant services organisation. Generally their work shall include the excavating and bedding the service which will include backfilling to a depth of approximately 300 mm above the service. The remainder of the backfilling shall be carried out by the Contractor.

Generally, work shall only commence on the installation of new services once the bulk earthworks have been completed and roughly trimmed to level along a substantial portion of the services route. In addition, no sidewalk, verge, median or island shall be surfaced or topsoiled until all work on the services has been completed.

Services affected by the contract are described as follows:

- **PS.3: Watermains.**
- **PS.4: Sewers.**
- **PS.5: Stormwater.**
- **PS.6: Electrical Cables / Lighting.**
- **PS.7: Telkom / Neotel.**
- **PS.8: CCTV.**

Further to the above, tenderers are referred to the services drawing and are to note that several minor cables / pipes may be encountered during excavation works which may require to be relocated to some extent. It is anticipated that the two-week period required under **PS.2.2** will allow sufficient time for these relocations.

#### **PS.2.4 Accommodation of Services**

Further to **Clauses PS.1 and PS.2** of this specification, tenderers are to note that allowance must be made under this item and / or the appropriate rates, for all costs incurred as a result of complying with these clauses. It shall also cover liaison with the services organisations and accommodation of their work gangs / contractors on site.

### **PS.3 WATERMAINS**

#### **PS.3.1 General**

**Tenderer's attention is drawn to the following points regarding the watermains to be installed as part of this contract.**

**Particular attention should be paid to tie-ins to the existing live mains which normally have to be done by the Water Supply Branch even if the installation of the new main is included in the contract.**

**PS.3.2 Water Main Valve Access**

Due to the dangerous situation occurring when water main valves are covered over, the Contractor shall always maintain access to all water main valves. During asphalt layer work, after each pass by the paving machine, the valves shall be exposed, and access maintained in a safe condition.

Whatever method the Contractor chooses to use for this work, the cost of raising the valves from existing level to ultimate level shall be paid only once, irrespective of the number of times the valve is uncovered. Spacer rings required for the height adjustment of valve covers shall be supplied by the Water and Sanitation Unit. Tolerances on valve cover levels shall be as specified in clause PH.6.5. Before final setting in position of valve covers the Contractor shall liaise with the Employer's Agent regarding the direction in which covers shall be placed.

**PS.3.3 Restriction on Compactive Equipment**

The Contractor is to note that existing watermains traverse the site of the works and special care is to be taken near these mains and connections. The existing mains and connections shall be proved on site by the Contractor prior to any construction work commencing in the vicinity of the watermains.

Under no circumstances will heavy road-making equipment, other heavy plant or vibratory compaction equipment be permitted to operate within 800 mm vertically or horizontally of the existing mains or connections. The permissible compaction plant within this restricted area shall be the equivalent of a "Bomag 90" under static compaction, or similar approved plant. When the roadworks is far enough advanced to provide a minimum of 800 mm cover to the existing mains, the above restriction will fall away.

The Contractor is to take cognisance of the above requirements when entering rates in the Bill of Quantities and in the programming of the works. No claim for additional payment based on the inability to use plant as a result of the requirements of this clause will be accepted. The Contractor will be held liable for any costs should the watermain or electrical cables be damaged during construction of the road.

**PS.4 SEWERS**

Tenderer's attention is drawn to the following points regarding the sewer to be installed as part of this contract.

The contractor is to note that approximately 5km of sewer infrastructure will be constructed including domestic connections and tie into the existing trunk mains. The existing sewer pipe traversing within the sites.

**PS.4.1 Blockage of Foul Water Sewers**

The Contractor shall be responsible for ensuring that cementitious sludge, sand and rubble from the works do not enter the foul water reticulation system. The Contractor shall be liable for any costs incurred by the Council or others as a result of blockages in the reticulation system attributed to failure to comply with the above requirement.

**PS.5 STORMWATER**

Tenderer's attention is drawn to the following points regarding the stormwater to be installed as part of this contract.

The contractor is to note that approximately 3.5km of stormwater infrastructure will be constructed including domestic connections and tie into the existing infrastructure.

#### **PS.5.1 Blockage Stormwater Sewers**

The Contractor shall be responsible for ensuring that cementitious sludge, sand and rubble from the works do not enter the stormwater reticulation system. The Contractor shall be liable for any costs incurred by the Council or others as a result of blockages in the reticulation system attributed to failure to comply with the above requirement.

#### **PS.6 ELECTRICAL PLANT**

Tenderer's attention is drawn to the following points regarding the electrical equipment and cabling to be installed as part of this contract.

Any existing cables and connections shall be proven on site by the contractor prior to any construction works commencing in vicinity of the CDUs, electrical poles and substations.

#### **PS.6.1 General**

Various types of electrical cables including high voltage, low voltage, street lighting and domestic connection cables are affected by the contract. The laying, relocation and jointing of all cables will be carried out by eThekwini Electricity's work gangs, or agents appointed by them, whilst the excavation and backfilling forms part of this contract. Close liaison will therefore be necessary with eThekwini Electricity throughout the contract.

#### **PS.6.2 Street Lighting**

The existing lighting will be removed in stages and replaced in the centre median / intersection corners. Relocation will take place during this contract and be executed by eThekwini Electricity or their agents. It is a requirement that the street lighting be operational at all times.

#### **PS.6.3 MV / LV Cables**

Certain MV / LV cables are to be replaced within the contract area (see drg xxxxxxxxA0). The actual cable work associated with this relocation and / or replacement of these cables will be carried out by eThekwini Electricity, and it is stressed that the **two** week period referred to in Clause PS.2 is the minimum period required to enable eThekwini Electricity to be on site timeously.

#### **PS.6.4 Relocation of Existing Services**

Should it be necessary to adjust the line, level and / or position of any service not catered for in the contract to enable the construction to proceed the Contractor shall on no account effect such adjustment himself but shall notify the Engineer who will arrange for the work to be carried out at no cost to the Contractor.

#### **PS.7 TELKOM S.A. LIMITED / NEOTEL PLANT**

No work to Telkom / Neotel Plant is envisaged, but the tenderers attention is drawn to the fact that Telkom / Neotel copper cables and fibre optic cables are existing in the contract area.

## **PS.8 CCTV PLANT**

No work to CCTV Plant is envisaged, but the tenderers attention is drawn to the fact that CCTV cables and fibre optic cables are existing in the contract area.

## **PS.9 MANAGEMENT OF THE ENVIRONMENT**

The Contractor shall pay special attention to the following:

### **PS.9.1 Natural Vegetation**

The Contractor shall confine his operation to as small an area of the site as may be practical for the purpose of constructing the works.

Only those trees and shrubs directly affected by the works and such others as the Employer's Agent may direct in writing shall be cut down and stumped. The natural vegetation, grassing and other plants shall not be disturbed other than in areas where it is essential for the execution of the work or were directed by the Engineer.

### **PS.9.2 Fires**

The Contractor shall comply with the statutory and local fire regulations. He shall also take all necessary precautions to prevent any fires. In the event of fire, the Contractor shall take active steps to limit and extinguish the fire and shall accept full responsibility for damages and claims resulting from such fires which may have been caused by him or his employees.

### **PS.9.3 Environmental Management Plan**

In addition to the above, all requirements according to the Environmental Management Plan as detailed in **C3.4: Particular Specifications**, will be adhered to.

## **PS.10 OCCUPATIONAL HEALTH AND SAFETY**

### **PS.10.1 General Statement**

When considering the safety on site the Contractor's attention is drawn to the following:

#### **Describe issues relating to OH&S and the Regulations**

It is a requirement of this contract that the Contractor shall provide a safe and healthy working environment and to direct all his activities in such a manner that his employees and any other persons, who may be directly affected by his activities, are not exposed to hazards to their health and safety. To this end the Contractor shall assume full responsibility to conform to all the provisions of the Occupational Health and Safety Act No 85 and Amendment Act No 181 of 1993, and the OHS Act 1993 Construction Regulations 2014 issued on 7 February 2014 by the

Department of Labour.

For the purpose of this contract the Contractor is required to confirm his status as mandatory and employer in his own right for the execution of the contract by entering into an agreement with the Employer in terms of Section 37(2) of the Occupational Health and Safety Act.

## **PS.10.2 Health and Safety Specifications and Plans to be submitted at tender stage**

### **PS.10.2.1 Employer's Health and Safety Specification**

The Employer's Health and Safety Specification is included in **C3.4: Particular Specifications**.

### **PS.10.2.2 Tenderer's Health and Safety Plan**

At tender stage only a brief overview of the tenderer's perception on the safety requirements for this contract will be adequate. This will be attached to **T2.2: Contractor's Health and Safety Plan**.

Only the successful Tenderer shall submit a separate Health and Safety Plan as required in terms of Regulation 7 of the Occupational Health and Safety Act 1993 Construction Regulations 2014 and referred to in **T2.2: Contractor's Health and Safety Plan**.

The detailed safety plan will take into consideration the **site-specific risks as mentioned under PS.10.1** and must cover at least the following:

- (i) A proper risk assessment of the works, risk items, work methods and procedures in terms of Regulations 9 to 29.
- (ii) Pro-active identification of potential hazards and unsafe working conditions.
- (iii) Provision of a safe working environment and equipment.
- (iv) Statements of methods to ensure the health and safety of subcontractors, employees and visitors to the site, including safety training in hazards and risk areas (*Regulation 7*).
- (v) Monitoring health and safety on the site of works on a regular basis, and keeping of records and registers as provided for in the Construction Regulations.
- (vi) Details of the Construction Supervisor, the Construction Safety Officers and other competent persons he intends to appoint for the construction works in terms of Regulation 8 and other applicable regulations; and
- (vii) Details of methods to ensure that his Health and Safety Plan is carried out effectively in accordance with the Construction Regulations 2014.

The Contractor's Health and Safety Plan will be subject to approval by the Employer, or amendment, if necessary, before commencement of construction work. The Contractor will not be allowed to commence work, or his work will be suspended if he had already commenced work, before he has obtained the Employer's written approval of his Health and Safety Plan.

Time lost due to delayed commencement or suspension of the work as a result of the Contractor's failure to obtain approval for his safety plan, shall not be used as a reason to claim for extension of time or standing time and related costs

A generic plan will not be acceptable.

## **PS.10.3 Cost of compliance with the OHS Act Construction Regulations**

The rates and prices tendered by the Contractor shall be deemed to include all costs for conforming to the requirements of the Act, the Construction Regulations and the Employer's Health and Safety Specification as applicable to this contract. Should the Contractor fail to comply with the provisions of the Construction Regulations, he will be liable for penalties as provided in the Construction Regulations and in the Employer's Health and Safety Specification.

Items that may qualify for remuneration will be specified in the Employer's Health and Safety Specification.

#### **PS.11 SITE SECURITY**

The Contractor shall, for the duration of the contract, provide sufficient security and watchmen to adequately ensure the safety and protection of the works, the Contractor's staff, including local labour and subcontractors, and all site plant and construction equipment required for the works.

Site Security, in conjunction with the SAPS (where necessary), shall be responsible for removal of disruptive elements, that may interrupt the progress of the contract through acts such as, but not limited to, intimidation, threats of disruption, violent disruption, or criminal and illegal activity by the local community or independent organisations or entities that may result in slowing down or partial or total stoppage of the works.

Payment for this item shall be made under Section 1, Part AB of the Bill of Quantities.

#### **PS.12 PERFORMANCE MONITORING OF SERVICE PROVIDERS**

The performance of service providers that have been selected to provide assistance in the provision of a municipal service, otherwise than in circumstances where Chapter 8 of the Municipal Systems Act applies, is required, by Section 116 of the Municipal Finance Management Act, to be monitored and reported on (see Cl.53 of the SCM Policy).

Appropriate key performance indicators (KPIs) for the contract must be set by the Municipality as a yardstick for measuring performance.

The following KPIs will be applicable to this contract:

- (a) .....
- (b) .....
- (c) .....

#### **PS.12.1 COMMUNITY LIAISON OFFICER**

The ward councillor(s) in whose ward(s) work is to be done will, collectively, identify a community liaison officer (CLO) for the project and make the person known to the Contractor within two days of being requested to do so. As this contract will be split over 2 wards, i.e. Wards 59 and 60, the contractor shall employ 1 CLO from each ward for the full contract duration. The Contractor will be required to enter a written contract with the CLO's that specifies:

- The hours of work and the wage rate of the CLO (200% of the Civil Engineering Industry minimum wage).
- The duration of the appointment.
- The duties to be undertaken by the CLO which could include:
- Assisting in all respects relating to the recruitment of local labour.

- Acting as a source of information for the community and councillors on issues related to the contract.
- Keeping the Contractor advised on community issues and issues pertaining to local security.
- Assisting in setting up any meetings or negotiations with affected parties.
- Keeping a written record of any labour or community issue that may arise.
- Any other duties that may be required by the Contractor.

Responsibility for the identification of a pool of suitable labour shall rest with the CLO, although the Contractor shall have the right to choose from that pool. The Contractor shall have the right to determine the total number labourers required at any one time and this may vary during the contract.

The Contractor shall have the right to replace labour that is not performing adequately. Should such occasion arise, it must be done in conjunction with the CLO.

Payment for item AA.3 shall be made upon receipt of proof of payment to the CLO which is to include the contractor's tendered mark-up as per item AA.4. Payments under items AA.3 and AA.4 shall cover all costs related to CLO's. No additional costs shall be payable.

## **PS 13 SURVEY**

### **PS 13.1 SURVEY FOR, AND PREPARATION OF, 'AS BUILT' DRAWING**

The *Contractor* shall submit the following "For Record" data to the Design Consultant to complete the required "For Record" Drawings before a Certificate of Completion will be issued:-

#### Roads:

- Road centreline co-ordinates at the beginning and end of horizontal straight sections.
- Road centreline co-ordinates at 10 metre intervals on all horizontal curves from the beginning to the end of each horizontal curve.
- Edge of road levels, to the left and to the right of the road centreline, at 10 metre intervals throughout the entire length of all roads, starting from Staked Kilometre Distance 0,000 km to the end of each road.
- At the end of each road, the co-ordinates and levels of the centreline and the left and right edge of the road are required.
- The co-ordinate and levels of all banks at the top and toe of all banks at 10m intervals.

#### Footpaths:

- Footpath centreline co-ordinates at 10 metre intervals and at all changes in direction.

#### Water, Stormwater, Sewer and other services:

- Co-ordinates, invert and cover levels of all water, stormwater, sewer and other service controls that have been modified or constructed as new, during the contract,
- Including but not limited to: open lined concrete drains, stormwater catchpits, manholes, kerb and channels, precast pipe culverts and outlet structures.
- Co-ordinates of all other services e.g., cable duct markers, valve covers, Telkom



manholes etc. that have been either modified or constructed as new, during the contract.

#### General:

- Notwithstanding the above, the Contractor is to supply to the Design Consultant all other information necessary, to clearly indicate changes/modifications to the construction drawings during the contract period that will be required by the Design Consultant so that they can produce the "For Record" drawings.
- Each surveyed point shall be suitably coded and identifiable by the Design Consultant and shall be supplied on a CD/DVD, in an Ascii file with the following format: -
- Code [SPACE]XCo-ordinate[SPACE]YCoordinate[SPACE]Level[SPACE]Description
- The above information is to be given to an accuracy of three decimal places and is to be surveyed by a suitably qualified person.

In addition to the above, all 'For Record' information must be provided on a drawing in AutoCAD and DXF format together with a hard (paper) copy format showing the modifications undertaken during the contract period.

Suitable checks on the accuracy of the information provided may be carried out by the Design Consultant and should any of the information provided be found to be inaccurate or untrue, the Employer reserves the right to withhold payment or to employ the services of an engineering surveyor to re-survey all the works listed above, at the Contractor's expense. The Employer shall request a minimum of three quotations from three independent engineering surveyors of his choice, and the lowest quotation will be appointed, and the cost thereof will be deducted from monies owing to the Contractor.

The 'For Record' Data shall be the responsibility of the Contractor and shall be paid for under the item 'For Record' Data in the Contractors Preliminary and General Costs.

The unit of measurement shall be the "SUM"

The Contractor must also forward to the Engineer, a material "as built" spreadsheet in a format that is acceptable by the Client.

The completion certificate shall not be issued unless the above information in totality, has been forwarded to the Engineer.

#### **PS 13.2 Survey, setting out and coordination of existing manholes, catchpits, and cable duct markers**

The setting out of the works shall be the responsibility of the Contractor and shall be paid for under the item 'setting out' in the Contractor's Preliminary and General Costs.

The unit of measurement shall be (sum) and the rate shall include for the following:

The Contractor shall do the setting out to and beyond the obstructions. Such obstructions shall be reported to the Engineer as soon as possible. No additional payment shall be made for listing and reporting these obstructions and the re-establishment to set out areas that were affected by the obstructions.

#### **PS 13.3 Additional Site Survey**

**The Engineer may instruct the contractor to conduct a survey during the course of the**

**contract in order to facilitate re-design due to immovable obstructions or to facilitate the design of new settlements. The contractor will be required to submit all survey files in an Ascii format and drawings in a DXF/DWG format.**

**The unit of measurement shall be (sum) and the rate shall include for the survey as directed by the Engineer and the submission of all hardcopy and electronic files required by the Engineer.**

#### **PS.14 Progress Photographs**

The tenderer shall provide the Engineer and Employer with progress photographs on CD and as hardcopy documents throughout the duration of the contract. This information shall be compiled on a monthly basis and submitted as part of the payment certificate claim submission. Each monthly submission shall include two CD's and one hardcopy where photographs are to be collated in an A4 document.

The unit of measurement shall be (PC Sum) and the rate shall include for the requirements as set out in this clause.

#### **PS.15 Appointment of a Geotechnical Engineering Laboratory**

The contractor is to appoint a SANAS accredited geotechnical laboratory dedicated to the contract for a 30-month appointment period. The contractor is to obtain a minimum of 3 quotations. The tendering procedure shall be done under the supervision of the Employer's Agent. The Employer's agent shall offer assistance as, and when, required by the contractor in the appointment of a suitable geotechnical laboratory. The final approval for the successful laboratory shall be the decision of the Employer. The laboratory shall be for the acceptance testing required by the Engineer and his team. The laboratory shall be required to submit CVs of key personnel identified to undertake the field work and reporting under this contract.

It is to be noted under this item that the geotechnical laboratory shall be required to hire the services of a Professionally Registered Geotechnical Engineer on an ad hoc basis. Such services shall be requested at the Employers' Agent's discretion to provide confirmation of embankment and platform stability. A CV of the proposed individual is to be attached together with the quotation, along with a copy of their professional indemnity.

Included in the responsibilities of the geotechnical engineer is a stage 2 geotechnical investigation which shall also encompass the necessary NHBRC classifications and approvals for the platform.

Further details shall be provided at time of acquiring the services for the geotechnical engineering laboratory.

This laboratory is intended for acceptance tests only. The contractor shall still be responsible for all control testing at his own cost. Should the contract also wish to use the appointed commercial laboratory for the purposes of site control testing, the costing shall then be shared between the contractor and employer on a 50/50 basis.

#### **PS.16 NHBRC Foundations and Top Structure Approvals**

The contractor is to also acquire the necessary NHBRC approvals pertaining to the structural foundations and top structures that may have been constructed under this contract. The contractor shall allow costs for approval of 392 concrete foundations and 392 top structure units constructed for the purpose of relocations of existing residents.

### **PS.17 Application and Approval of Works Permit**

The application for the works permit shall be undertaken after the appointment of the successful contractor. The estimated time period for such works is 37 days. The employer's agent shall tender and select and appropriately qualified organisation to make the works permit application to the respective authorities. In addition, the contractor shall assist the appointed health and safety organisation in ensuring that the submitted health and safety plan is suitable for submission for the works permit. In an instance where the health and safety plan require modification, the contractor shall make such modifications in line with the recommendations of the appointed health and safety organisation. Allowances to undertake such works is allowed for in the priced bill of quantities under section AA.

### **PS.18 Materials Stockpiling & Movement of stockpiles**

The contractor is to take note that materials are to be stockpiled on site. The contractor, under the instruction of the Engineer and/or client, shall be required to relocate the stockpiled material within another area of the site of works (this shall include the contractors site camp). No compensation shall be paid to the contractor for such operations. This specification shall exclude cut to fill operations, the cost of which, shall be deemed to have been included in the rates under section DA and DB. No further charges shall be charged to the client for such operations.

### **PS 19 Survey And Pegging**

The contractor's attention is drawn to the setting out of the erfs upon completion of the contract. The contractor shall employ the services of a professionally registered land surveyor to set out the erfs as per approved town planning layout. A three-quote system is to be used, with the cheapest, most responsive tenderer being appointed. The contractor is to provide at a two-week lead time to the Engineer from requisition to provision of quotes.

The above setting out shall incorporate the use of survey pegs as per Town Planning and Surveyor General requirements. Appropriate wooden stakes shall be pegged into the ground. Temporary timber poles shall be placed at each survey peg to identify the location and prevent damage to the pegs.

The unit of measure for this item shall be Provisional Sum (PR Sum). The Contractor shall be allowed a handling charge which shall be measured in Percentage (%).

### **PS.20 Performance Monitoring Of Service Providers**

The performance of service providers that have been selected to provide assistance in the provision of a municipal service, otherwise than in circumstances where Chapter 8 of the Municipal Systems Act applies, is required, by Section 116 of the Municipal Finance Management Act, to be monitored and reported on (see Cl.53 of the SCM Policy).

Appropriate key performance indicators (KPIs) for the contract must be set by the Municipality as a yardstick for measuring performance.

The following KPIs will be applicable to this contract:

- (a) Adherence to Construction Programme (max points = 40)
- (b) Quality Control (max points = 40)
- (c) Health and Safety (max points = 20)

### **PS.21 Extra Over Definition**

Extra over items refer to items that to a certain extent have already been measured, but have not been priced at the full value of all their *labour* and *materials*.

In the case of bulk earthworks (sections DA and DB), this would refer to the additional costs not initially included in the excavations of soft material costs. The additional costs incurred for excavation in hard material, boulder material and spoiling material is accounted for in the extra over item. The rate provided by the contractor should only include for the additional costs incurred for the respective activities described above.

In the case of kerbing (section EF), the additional costs would refer to the additional work and time required to install kerbs on a radius less than 25m. The rate provided by the contractor should only include for the additional costs incurred for installing kerbing on a radius less than 25m.

### **PS.22 Relocation of Existing Residents To Newly Constructed Housing Units**

The contractor is to take note that there are existing persons which reside within the bounds of the project Phase. Payment under this item will include the relocation of these residents to suitable dwellings in order to ensure the fluid movement of construction. In this respect, the contractor is to assist affected residents with transferring of belongings to the newly provided housing units. The unit of measurement shall be Provisional Sum (PR Sum) on which the contractor shall be allowed a percentage (%) mark-up. The contractor shall follow the Proven Costs method, whereby all invoices, proof of payments and other documentation deemed necessary by the Engineer shall be presented with the respective for the claim against this item.

**C3.3: STANDARD SPECIFICATIONS**

**C3.3.1** The Specifications on which this contract is based are the eThekiwini Municipality's (City of Durban) Standard Engineering Specifications (hereafter referred to as the Standard Engineering Specifications). This document is obtainable separately, and Tenderers shall obtain their own copies of the applicable Sections.

Part	Description	Date of Issue	
AB	General Specifications	July	1992
B	Site Clearance	March	1990
C	Concrete Work	February	1987
DA	Earthworks: Bulk	January	1985
DB	Earthworks for Pipe Trenches	July	1992
DC	Earthworks for Concrete Lined Canals		
DD	Earthworks for Structures		
EA	Lime Stabilisation		
EB	Graded Crushed Stone	December	1988
EC	Cement Treated Graded Crushed Stone	December	1988
ED	Road Asphalt	July	1992
EE	Pre-coated Stone Chippings		
EF	Kerbs and Haunches	July	1992
EG	Sidewalks, Footpaths and Median Areas	July	1992
EH	Steel Guardrails & Conc. Median Barriers		
EJ	Concrete Interlocking Block Surfaces		
EK	Waterbound Macadam Base		
EL	Dumprock Subgrade Improvement		
EM	Concrete Surface to Roads		
EN	Slurry Sealing		
EP	Single Seal Surface Treatment		
F	Protection Works	July	1992
G	Pre-stressing		
H	Reinforced Earth		
J	Piling		
K	Bearings		
L	Structural Work		
PB	Pavement Layers of Gravel Material		
PC	Stabilisation of Gravel Base		
PD	Surface Treatment: Modified Binder		
PE	Pressure Pipelines: Steel		
PF	Pressure Pipelines: Other Than Steel		
PG	Non-Pressure Pipelines and Pc Culverts	July	1992
PH	Manholes and Appurtenant Drainage Works	July	1992
PJ	Pipe Jacking		
PG	Lateral Support Systems		
PS	Pump Stations: Sewage		
S	Reinstatement	March	1993
TA	Road Signs	October	1989
TB	Road Markings	October	1989

### C3.3.2 AMENDMENTS TO THE STANDARD SPECIFICATIONS

#### INTRODUCTION

In certain clauses the standard, standardized and particular specifications allow a choice to be specified in the project specifications between alternative materials or methods of construction and for additional requirements to be specified to suit a particular contract. Details of such alternative or additional requirements applicable to this contract are contained in this part of the project specifications. It also contains additional specifications required for this particular contract.

The number of each clause and each payment item in this part of the project specifications consists of the prefix **PS** followed by a number corresponding to the number of the relevant clause or payment item in the standard specifications. The number of a new clause or payment item, which does not form part of a clause or a payment item in the standard specifications and which is included here, is also prefixed by **PS**, but followed by a new number which follows on the last clause or item number used in the relevant section of the standard specifications.

PS AB	General Specifications
PS B	Site Clearance
PS C	Concrete Work
PS DA	Earthworks: Bulk
PS DB	Earthworks for Pipe Trenches
PS DC	Earthworks for Concrete Lined Canals
PS DD	Earthworks for Structures
PS EA	Lime Stabilisation
PS EB	Graded Crushed Stone
PS EC	Cement Treated Graded Crushed Stone
PS ED	Road Asphalt
PS EE	Pre-coated Stone Chippings
PS EF	Kerbs and Haunches
PS EG	Sidewalks, Footpaths and Median Areas
PS EH	Steel Guardrails & Conc. Median Barriers
PS EJ	Concrete Interlocking Block Surfaces
PS EK	Waterbound Macadam Base
PS EL	Dumprock Subgrade Improvement
PS EM	Concrete Surface to Roads
PS EN	Slurry Sealing
PS EP	Single Seal Surface Treatment
PS F	Protection Works
PS G	Pre-stressing
PS H	Reinforced Earth
PS J	Piling
PS K	Bearings
PS L	Structural Work
PS PB	Pavement Layers of Gravel Material

PS PC	Stabilisation of Gravel Base
PS PD	Surface Treatment: Modified Binder
PS PE	Pressure Pipelines: Steel
PS PF	Pressure Pipelines: other than Steel
PS PG	Non-Pressure Pipelines and Pc Culverts
PS PH	Manholes and Appurtenant Drainage Works
PS PJ	Pipe Jacking
PS PG	Lateral Support Systems
PS PS	Pump Stations: Sewage
PS S	Reinstatement
PS TA	Road Signs
PS TB	Road Markings

### **C3.4: PARTICULAR SPECIFICATIONS**

In addition to the Standardized and Project Specifications the following Particular Specifications / Policies shall apply to this contract:

C3.4.1 Part AH - OSHA 1993 Safety Specification  
(26 Pages)

C3.4.2 Standard Environmental Management Plan for Civil Engineering Construction Works  
(24 Pages)



### **C3.5: CONTRACT AND STANDARD DRAWINGS**

#### **C3.5.1 CONTRACT DRAWINGS / DETAILS**

List the drawings here

#### **C3.5.2 STANDARD DRAWINGS**

The Standard Drawings to which these Standard Engineering Specifications refer are listed below.

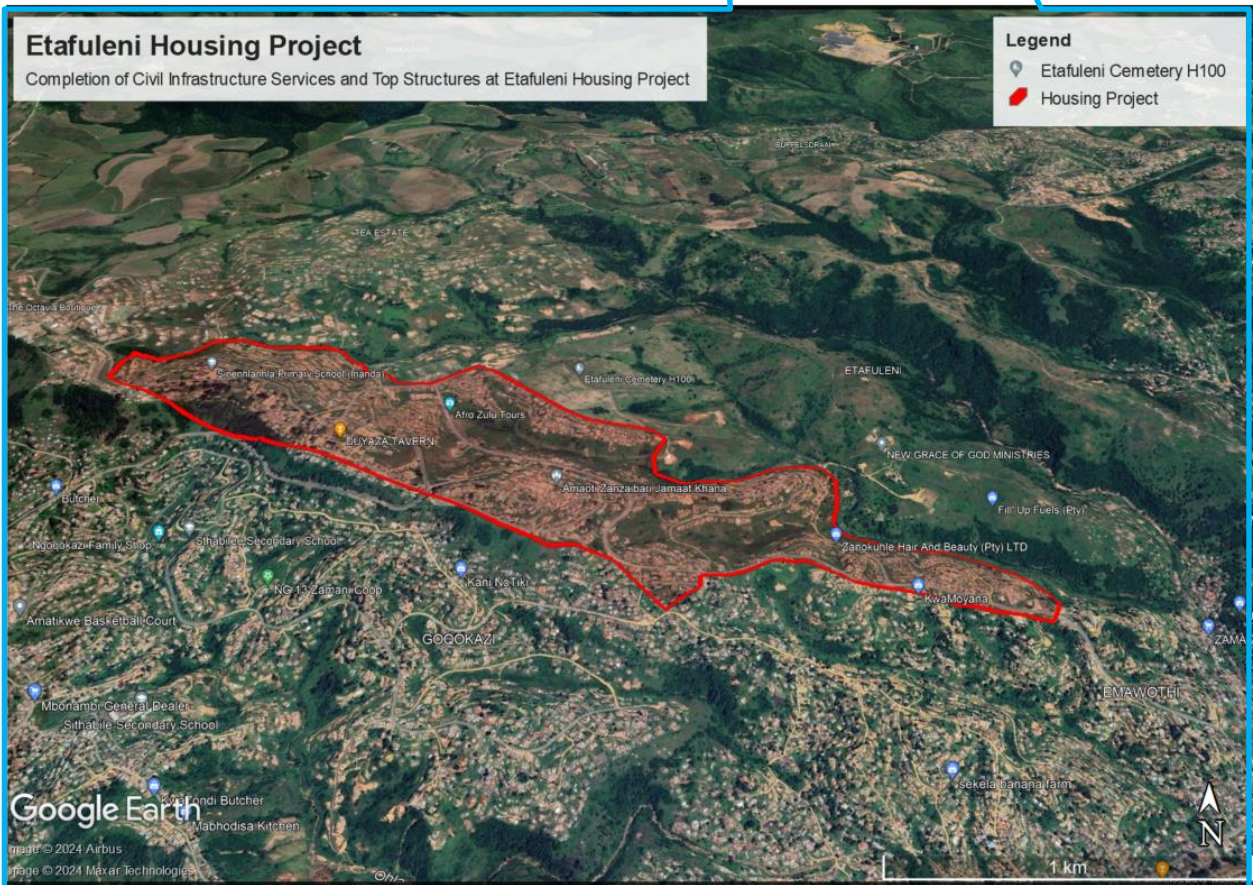
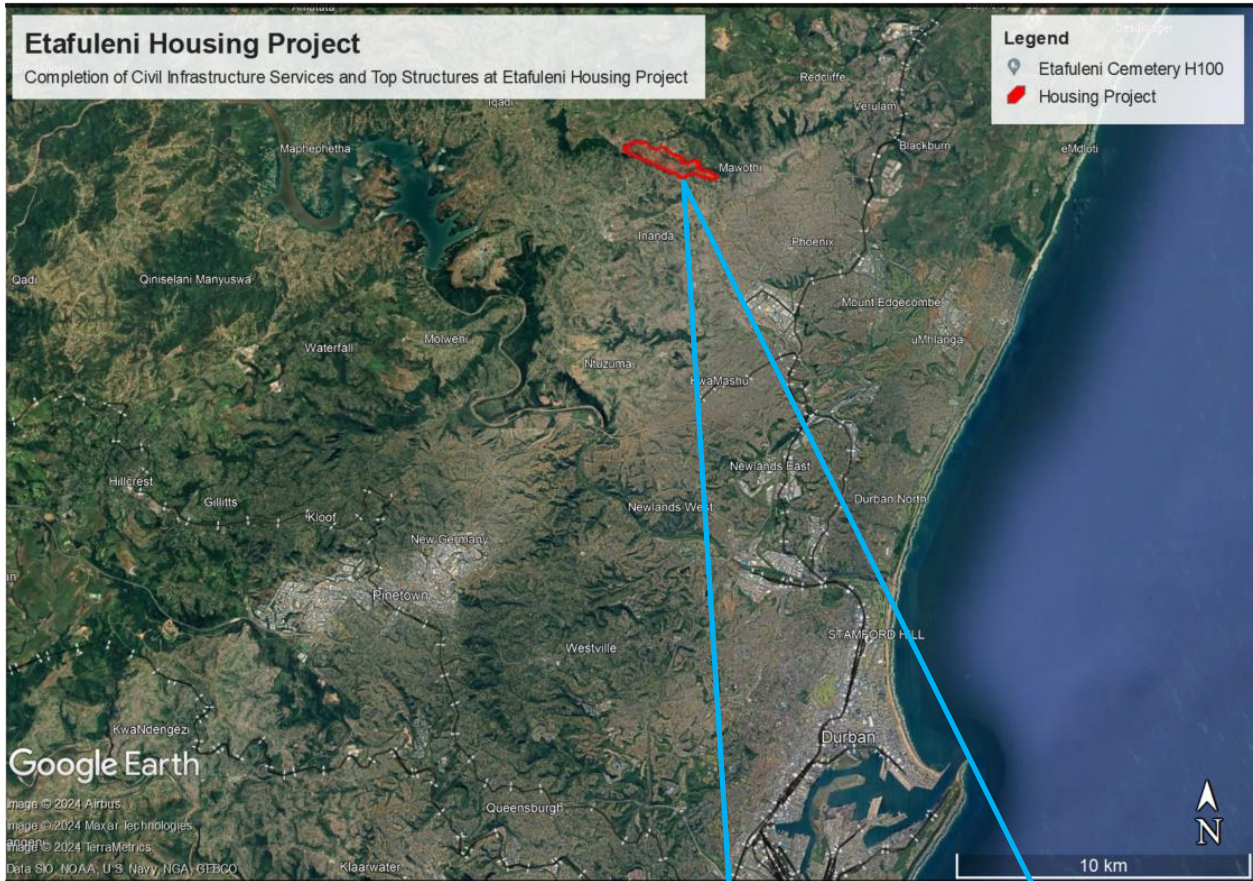
Dwg No	Description	Date of Issue	
38570	Ring Manholes	February	1990
38571	Brick Manhole Details	February	1990
38572	Stormwater Inlet Details	February	1990
38573	Stormwater Inlet Special Details	February	1990
38574	Sewer Manholes: Ramp, Backdrop and Channelling Details	February	1990
38575	Sub-Soil Drain, Pipe Bedding and Pipe Protection Details	February	1990
38576	Headwall Details	February	1990
38577	Kerbing Details	February	1990
38578	Concrete Median Barriers	February	1990
38579	Vehicular and Pedestrian Scoops	February	1990
38580	Concrete Bollard and Steel Guard Rail	February	1990
38581	Retaining Wall, PC Steps, Staircase, Cable Ducts and Headwalls	February	1990
38582	Precast Concrete Fencing and Aluminium Gates	February	1990
38583	Wire Mesh Fence and Gate Details	February	1990
38584	Standard Hydrant Thrust Blocks and Trenches	February	1990
38585	Water Connections, Pipework and Fittings	February	1990
38586	DP & TC Manholes - Rectangular	February	1990
38587	DP & TC Manholes - "L" Shaped	February	1990
38588	DP & TC Manholes - "T" Shaped	February	1990
38589	DP & TC Cable Ducts and Junction Box Details	February	1990
43120	Typical Details of Grid Inlets	February	1990

**C3.6: ANNEXURES**

**C3.6.1**      **Insert as required or “There are no Annexures”**

### PART C4: SITE INFORMATION

#### C4.1 LOCALITY PLAN



**C4.2 CONDITIONS ON SITE**

Detailed site conditions are elaborated on the geotechnical report, which is Annexure separately to this tender document.

**C4.3 TEST RESULTS**

Detailed test results are elaborated on the geotechnical report, which is Annexure separately to this tender document.