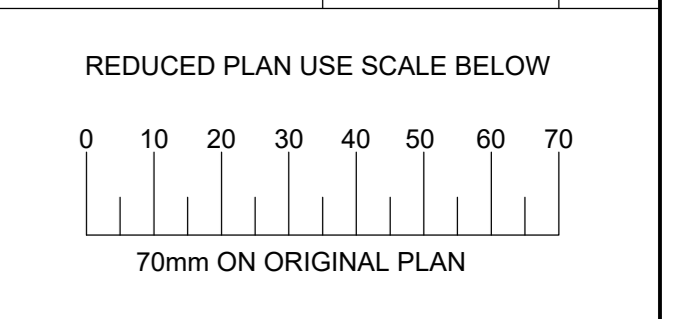


eTHEKWINI MUNICIPALITY  
HUMAN SETTLEMENTS  
HOUSING ENGINEERING DEPARTMENT

PLAN DESCRIPTION	DWG. NO.	SHEET NO.
CONTINUED FROM		
CONTINUED ON		
CROSS SECTIONS		
TYPICAL CROSS SECTION		
SURVEY LAYOUT		



LEGEND

EXISTING UNDERGROUND SERVICES ARE AS SHOWN BELOW.

SEWERS AND M/S	
STORM WATER DRAINS AND M/S	
WATER MAINS AND VALVES	
ELECTRICITY CABLES	
TELECOM CABLES	
OIL PIPELINES	

**deconsultants**  
Civil and Structural Engineers  
Project Managers and Community Based Consultants  
FIRENZE HOUSE 513 WINDERMERE ROAD  
DURBAN  
Tel : 031-3035282 Fax : 086013034918  
email dec@deconsultants.co.za

Revision	Date	Issued For Construction	Description
----------	------	-------------------------	-------------

NOTE: No construction work to commence until land and servitude acquisitions have been completed.

Acquisitions completed

DATE: \_\_\_\_\_

ENGINEER: \_\_\_\_\_

SERVICE	DATE	SIGNATURE
SEWERS		
WATER MAINS		
G.P.O. CABLES		
ELECTRIC CABLES		
S.A.R. CABLES		
E.S.C. CABLES		
OIL PIPE LINE		

NOTE: Only underground services affected by new construction work are shown. Care must be taken during excavations for road foundations trenches etc. to avoid damage to underground services such as sewers, drains, cables, water mains and connectors. Whenever possible these must be located before work proceeds.

**1H-36098**  
Contract No.  
Project Title  
Provision of Civil Engineering Services and the Construction of 448 Top Structures at Etafuleni Phase 1A and 1DA, Ward 56

Drawing Title  
**LAYOUT PLAN  
PHASE 1D-A  
(SUB PHASES: 1D-A-1, 1D-A-2 & 1D-A-3)**

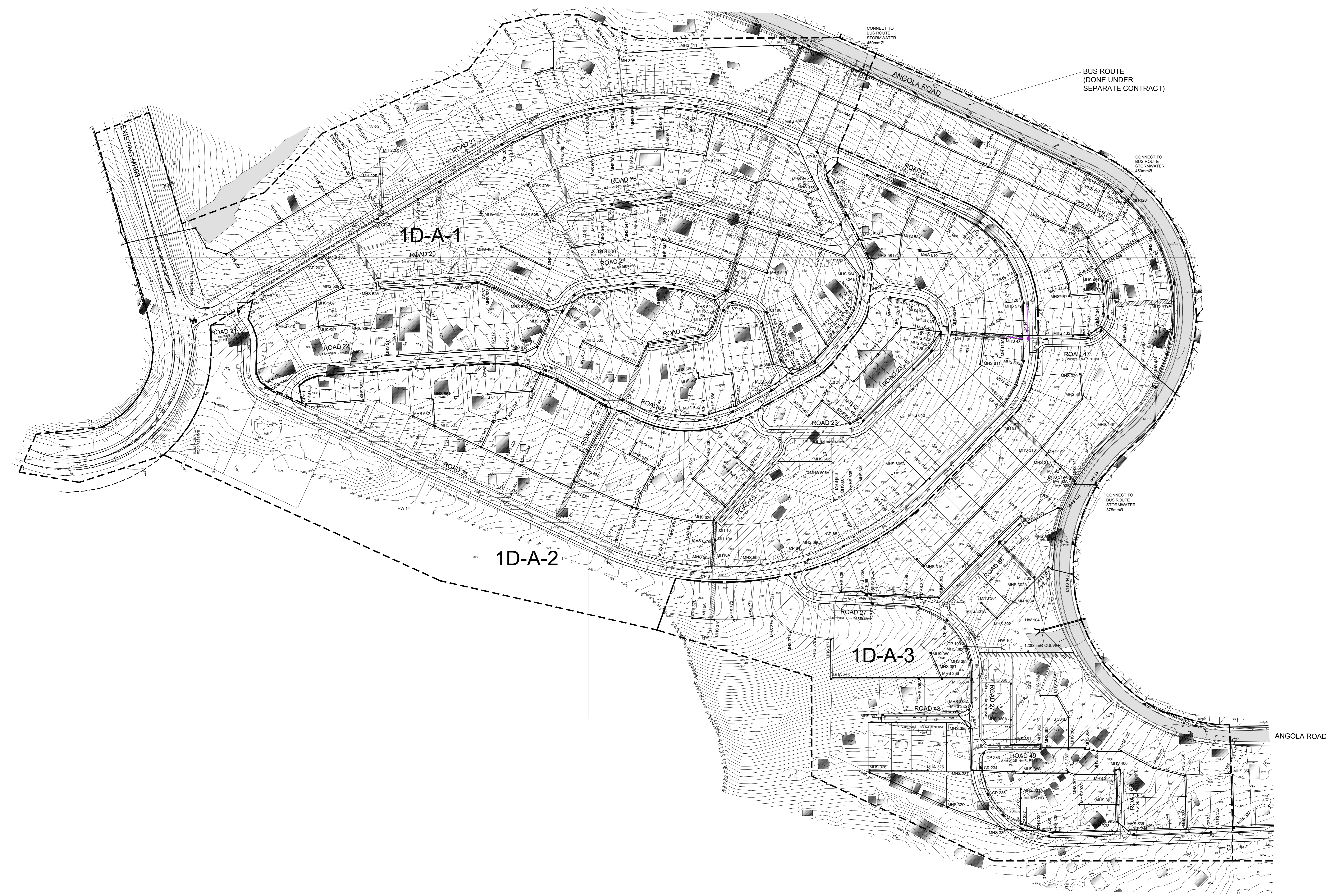
Scales	Reference
1 : 1000	

Designed	Date
S. HARIPERSAD	03-04-2014
Checked	Drawn by
V. MAHARAJ	S. PATHER

Senior Manager: Development Engineering (South)  
Deputy Head: Development Engineering

Head : Engineering

Drawing No	Sheet
47992/DA/101	1
Date	Sign



FOR TENDER PURPOSE ONLY

AS BUILT  
Date: \_\_\_\_\_ Sign: \_\_\_\_\_