

# SALDANHA MPT – MATERIAL HANDLING PROCESS

TRANSNET



delivering freight reliably



05 March 2024



# Background

The Multipurpose Terminal (MPT) is a Breakbulk handling facility, located in Saldanha Bay. This is a 24 hour; 365 days operations, including weekends and Public Holidays, and it handles various commodity and cargo export/import requirements, in support of market demands. The successful handling of the Manganese and Iron Ore commodities requires the integrated synergy of all the departments within the Terminal to ensure that the Manganese and Iron Ore is loaded onto vessels.



# Scope of Requirements

## Scope of Requirements is organized into the following tasks:

- **Task 1:** Manganese transported by ADT from storage area to vessel
- **Task 2:** Iron Ore transported by ADT from storage area to vessel
- **Task 3:** Manganese loaded into skips by Front End Loaders to the vessel
- **Task 4:** Iron Ore loaded into skips by Front End Loaders to the vessel

# Equipment & Human Capital Required from Service provider

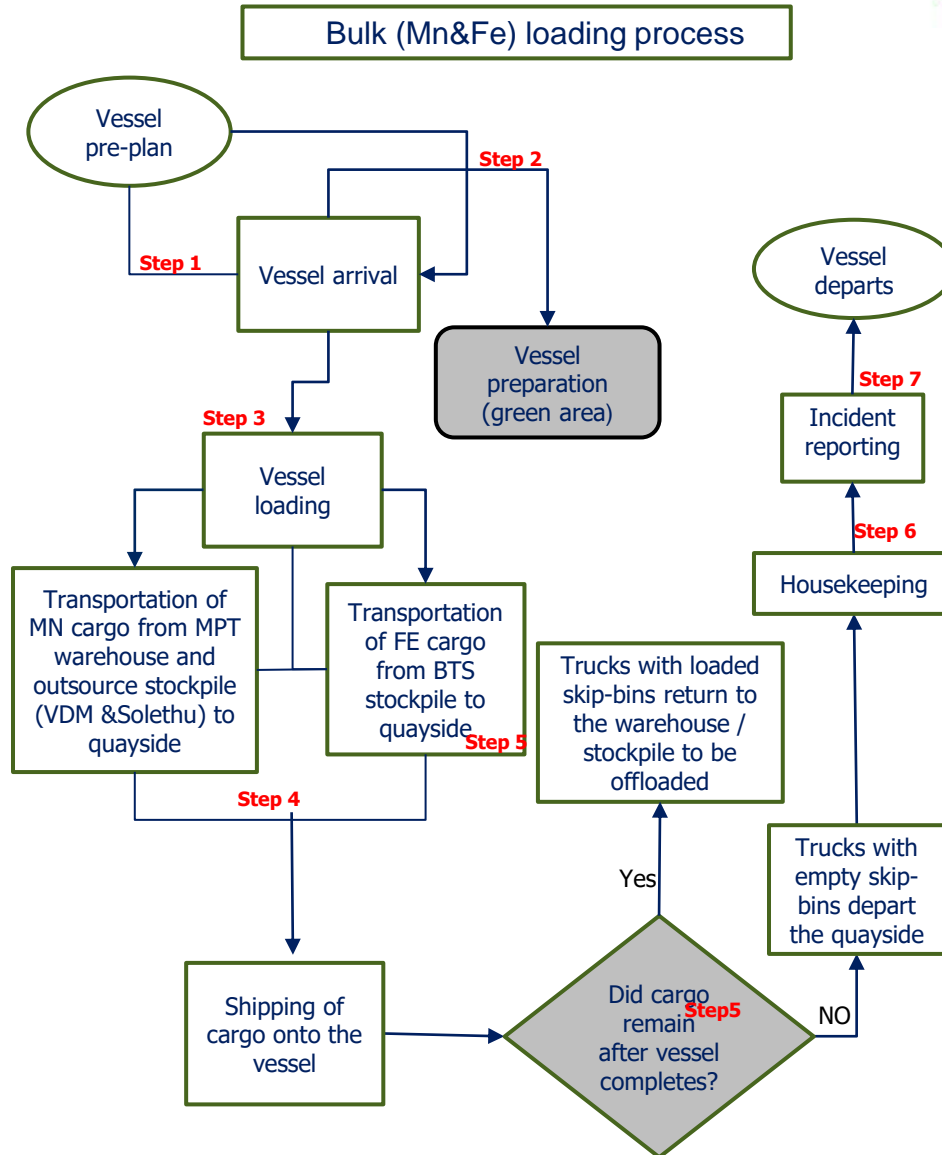
## Equipment

- The service provider must have fifteen (15) articulated dumper trucks and four (4) Front End Loaders (owned or leased) available, which are in a good working condition to carry out the respective service requirements, with at least a capacity of 25 tons.
- The Front-End Loaders must have a minimum bucket load capacity of at least 4.7 cubic meters available.

## Human Capital Requirements

- The service provider shall have a minimum of 8 operators for TPT's 24-hour operations, available to operate the Front-End Loaders.
- The service provider shall have a minimum of 30 operators for TPT's 24-hour operations, available to operate the Articulated dumper trucks.

# Process flow for Mn and Fe



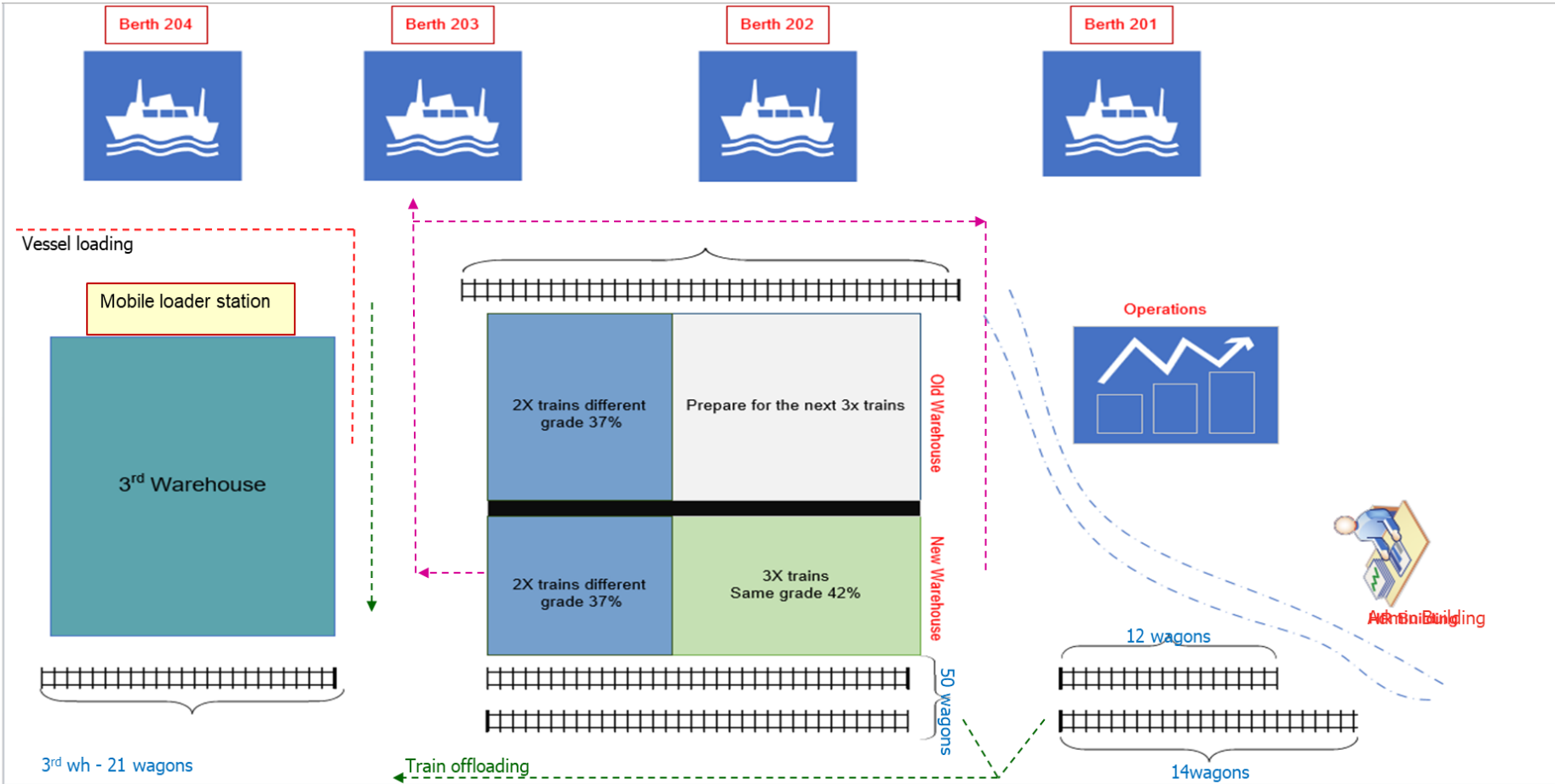


# Current Process layout for Mn





# Operation process overview





Area 1 -  
A-Line

Area 1  
- H-line

**The cycle for Iron Ore is estimated to be, but not limited to a round trip of 7 kilometers**



# Mobile Ship Loader, Dual truck unloader





# Loading of Iron Ore with Front End loaders into skips





# Volumes

- The volumes of commodities are an indicative and under no circumstances committed as they fluctuate based on the availability of the commodity or stockpile levels.
- The total volumes are projected at 6,908,048 million tons over the duration of (36) months
- Volumes are therefore not guaranteed nor limited.



# Business Continuity Plan Managing Risk

- The service provider is expected to submit a business continuity plan in order to manage risk. This plan must state how the service provider will limit or minimize operational disruptions; this will require the following but not limited to:
- A clearly defined business continuity team with their roles and contact details to be contacted in case of an emergency.
- Critical services and equipment should be identified in the plan and how much time it will take to restore or replace each critical service or equipment in case of a disruption without compromising service level or operations (Ideally Transnet is expecting the time to be 4 hours).



# Equipment and Operator identification documents

- The Service Provider shall ensure that all FEL's and articulated dumper trucks are operational and meets the minimum standards of the South African National Standards (SANS) and the National Road Traffic Act (Act 93 of 1996); namely:
- Licensed and Roadworthy: Certified and valid copies of vehicle and/or equipment licenses.
- Registrations: Certified and valid copies of vehicle and/or equipment registrations.

## **Competency certificate required by Front End Loader operator:**

- A current or valid FEL competency certificate/card issued by an accredited training Centre in accordance with the Occupational Health and Safety Act 85/1993 – Regulation 18(11) and the Transport Education Training Authority.



# Safety and Compliance

- Competency certificate required by Front End Loader / Dumper truck operator:
- A current or valid FEL competency certificate/card issued by an accredited training Centre in accordance with the Occupational Health and Safety Act 85/1993 – Regulation 18(11) and the Transport Education Training Authority.
- The service provider shall ensure that upon award of business a comprehensive safety file is completed according to TPT's SHEQ department requirements, the service provider will not be allowed to commence work on site without the completion of the safety file and approval from the SHEQ Manager.



# Procedure of Work Activities

- Demand for the Transportation and Handling of Manganese/Iron ore will be controlled and managed by the Operations Department.
- Prior to any service requirement, the Operations Department will convene a pre-plan meeting with the service provider and will share the customer's demands and/or requirements. The parties shall agree and sign off as to the number of vehicles and front-end loaders required to render the services as well as the total tonnage to be transported, vessel nomination and arrival schedule.
- Once agreed upon, the Service Provider will ensure that it meets its obligations. (Vehicle and equipment requirements shall be dependent on Manganese/Iron ore volumes required to be transported.)

TRANSNET



delivering freight reliably

THANK YOU

