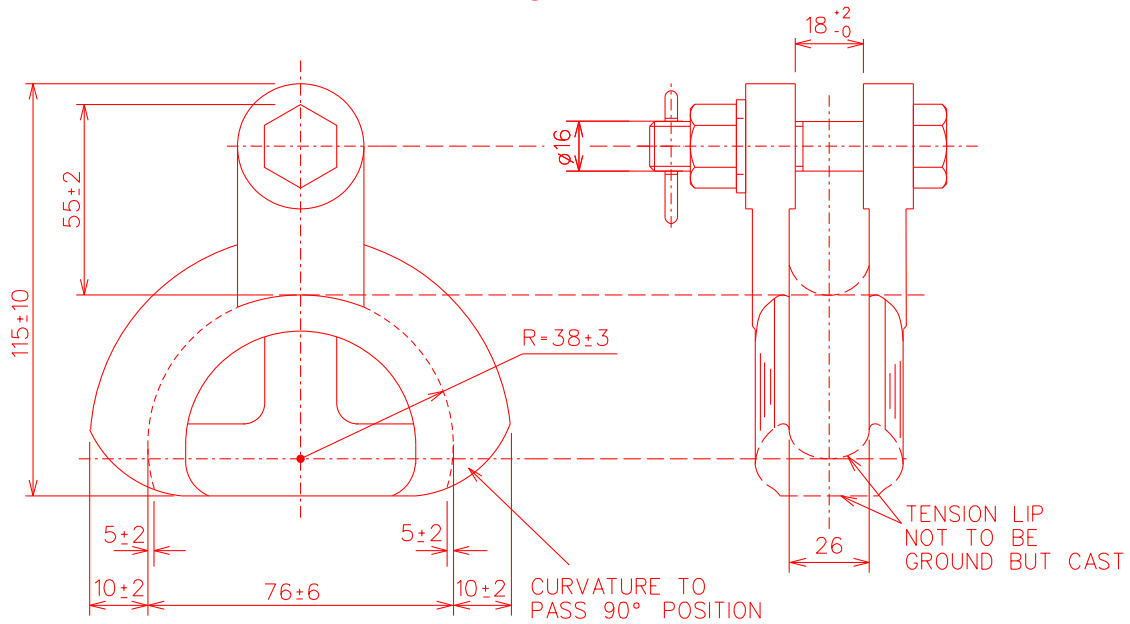


SPEC SHEET



NOTE :

1. SKETCH NOT FOR MANUFACTURING PURPOSES.
2. TO BE USED WITH WIRE FORMED DEAD ENDS (D-DT-7035)
3. ALL MOULDING LINES TO BE REMOVED FROM INSIDE OF CLAMP.
4. CLAMP TO ACCOMMODATE REGULATING EYE SEE D-DT-2007.

SAP MATERIAL No.:		0701176						
SHORT DESCRIPTION:		CLAMP:THIMBLE CLEVIS;MI;120 KN						
TECH. DESCRIPTION:								
CLAMP: TYPE: THIMBLE CLEVIS; MATERIAL: MI; TENSILE STRENGTH: 120 KN; MI: MALLEABLE IRON; HOT DIP GALVANISED; CLEVIS DESIGNATION 16L; NOMINAL LENGTH 115MM X 96MM WIDTH; CLEVIS OPENING 18MM; MINIMUM FAILING LOAD 120KN; TENSION LIP NOT TO BE GROUND BUT CAST AS PER DRAWING; ALL MOULDING LINES TO BE REMOVED ON INSIDE OF CLAMP; CLAMP TO ACCOMODATE REGULATING EYE SEE DDT 2007; SUPPLIED WITH: 1 X HUMP BACK SPLIT PIN ACCORDING TO DDT 3164; 1 X M16 X 75MM CLEVIS BOLT ASSEMBLY (D-DT-7043); ESKOM DRAWING No. D-DT-7118 *								
ITEM	:-	CLAMP,THIMBLE CLEV MALLEABLE IRON 120kN						
MATERIAL SPECIFICATION	:-	BS 970 1, 2, 3						
CORROSION SPECIFICATION	:-	SANS 121						
STANDARD SPECIFICATION	:-	SANS 60471, SANS 61284						
ESKOM SPECIFICATION	:-	240-60777474, 240-75883164						
TEST & CERTIFICATION REQUIREMENTS	:-	TYPE TEST TO SANS 61284 & 240-60777474 AS APPLIED TO THE SPECIFIC APPLICATION; ALSO, AS A SYSTEM IN CONJUNCTION WITH 240-75883164						
INSPECTION	Yes	No	ESKOM RELEASE NOTE			Yes	No	
IDENTIFICATION:- INDELIBLE MANUFACTURES TRADEMARK & PART No. ON ALL ITEMS								
AUTH:	BRUCE McLaren	DATE:	10/02/2022	SCALE	 D-DT 7118		SAP No:	
CHKD:	Z.EVAN	DATE:	10/02/2022	NTS			0701176	
DRAWN:	J.SHINTA	DATE:	20/08/2021	CAD REF:			SET	SHEET
				SERIES 7000	1	1	0	
				FILE No:				
				7118				