

SAP MATERIAL No.: 0165524

SHORT DESCRIPTION: CLAMP SHIELD WIRE 7/3.35 D7003

TECH. DESCRIPTION:  
 SHIELD WIRE CLAMP \*  
 70 x 16 x 115 LONG FLAT BAR \*  
 MATERIAL GRADE MILD STEEL \*  
 HOT DIPPED GALVANISED \*  
 SHIELD WIRE RANGE 7/3.35 (INCLUDING PREFORMED ARMOR RODS) \*  
 BOLT TO BOLT CENTERS = 75mm \*  
 SUPPLIED COMPLETE WITH  
 2 x M12 x 65mm LONG HEX. BOLTS,  
 2 x M12 GRADE 4.8 HEXAGON NUTS (D-DT-3173),  
 2 x M12 FLAT WASHERS AND  
 2 x M12 SPRING WASHERS (D-DT-3014)\*  
 ESKOM DRAWING No. D-DT-7003 \*

ITEM :- CLAMP SHIELD WIRE

MATERIAL SPECIFICATION :- SANS 1431

CORROSION SPECIFICATION :- SANS 121

STANDARD SPECIFICATION :- SANS 61284

ESKOM SPECIFICATION :- TRMSCAAH2

TEST & CERTIFICATION REQUIREMENTS :- TYPE TEST ACCORDING TO SANS 61284

INSPECTION Yes No ESKOM RELEASE NOTE Yes No

IDENTIFICATION:- INDELIBLE MANUFACTURES TRADEMARK & PART No. ON ALL ITEMS

11	19/2.65 CLAMP THICKNESS CORRECTED	P.A.T.	S. MASHABA	B.BRANFIELD	12.04.2011
----	-----------------------------------	--------	------------	-------------	------------

10	GRADE FOR HEX NUTS ADDED	P.A.T.	S. MASHABA	B.BRANFIELD	07.09.2010
----	--------------------------	--------	------------	-------------	------------

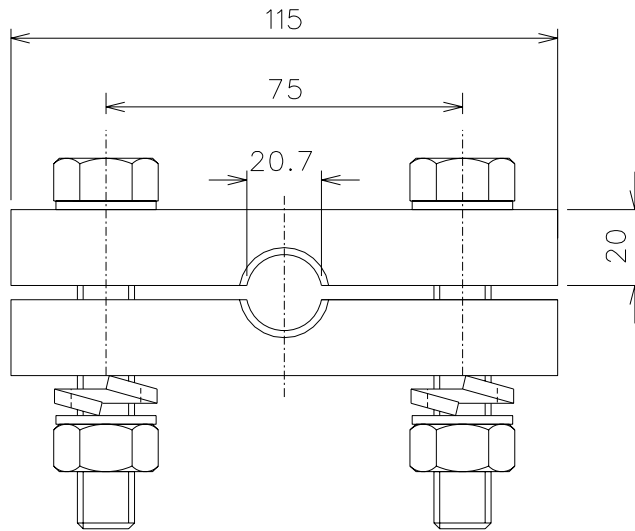
9	ESKOM SPEC. CORRECTED	P.A.T.	S. MASHABA	B.BRANFIELD	26.03.2010
---	-----------------------	--------	------------	-------------	------------

REV	REVISION DESCRIPTION	BY	CHKD	AUTH	DATE	REF. DWGS
AUTH:	P. CROWDY	DATE:	26.03.1998	SCALE NTS		SAP No: 0165524
CHKD:	D. PILLAY	DATE:	26.03.1998	CAD REF: SERIES 7000		
DRAWN:	G.C. P.A. VERMAAK	DATE:	08.11.1997 01.03.1998	FILE No: 7003		SET 2



**D-DT-7003**

SET	SHEET	REV
2	1	11




SAP MATERIAL No.:	0243443
SHORT DESCRIPTION:	CLAMP SHIELD WIRE 19/2.65 D7003

TECH. DESCRIPTION:

SHIELD WIRE CLAMP \*  
 70 x 20 x 115 LONG FLAT BAR \*  
 MATERIAL GRADE MILD STEEL \*  
 HOT DIPPED GALVANISED \*  
 SHIELD WIRE RANGE 19/2.65 (INCLUDING PREFORMED ARMOR RODS) \*  
 BOLT TO BOLT CENTERS = 75mm \*  
 SUPPLIED COMPLETE WITH  
 2 x M12 x 65mm LONG HEX. BOLTS,  
 2 x M12 GRADE 4.8 HEXAGON NUTS (D-DT-3173),  
 2 x M12 FLAT WASHERS AND  
 2 x M12 SPRING WASHERS (D-DT-3014)\*  
 ESKOM DRAWING No. D-DT-7003 \*

11	19/2.65 CLAMP THICKNESS CORRECTED	P.A.T.	S. MASHABA	B.BRANFIELD	12.04.2011	
10	GRADE FOR HEX NUTS ADDED	P.A.T.	S. MASHABA	B.BRANFIELD	07.09.2010	
9	ESKOM SPEC. CORRECTED	P.A.T.	S. MASHABA	B.BRANFIELD	26.03.2010	

REV	REVISION DESCRIPTION			BY	CHKD	AUTH	DATE	REF. DWGS		
AUTH:	P. CROWDY	DATE:	26.03.1998	SCALE		SAP No:				
CHKD:	D. PILLAY	DATE:	26.03.1998	NTS		0243443				
DRAWN:	G.C. P.A. VERMAAK	DATE:	08.11.1997 01.03.1998	CAD REF:		SET	SHEET	REV		
				SERIES 7000	<b>D-DT-7003</b>			2	2	11
				FILE No:						
				7003						