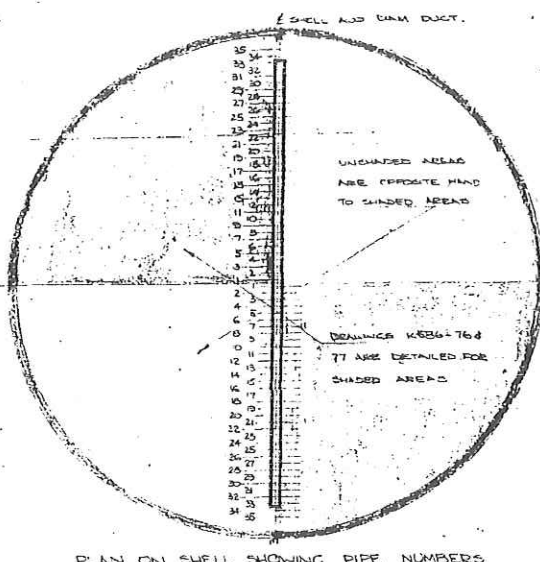
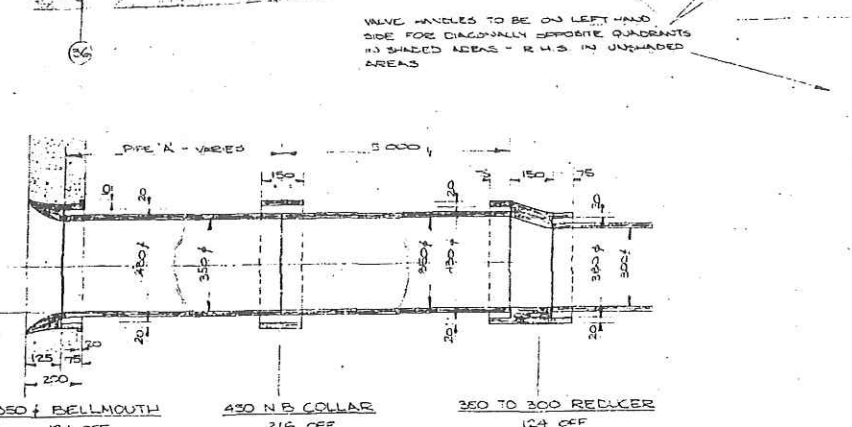
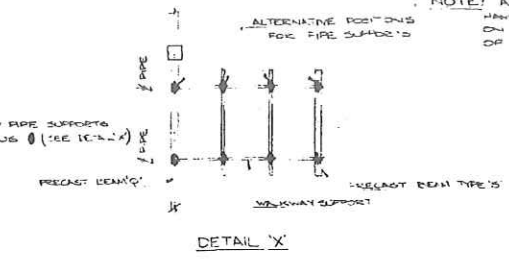


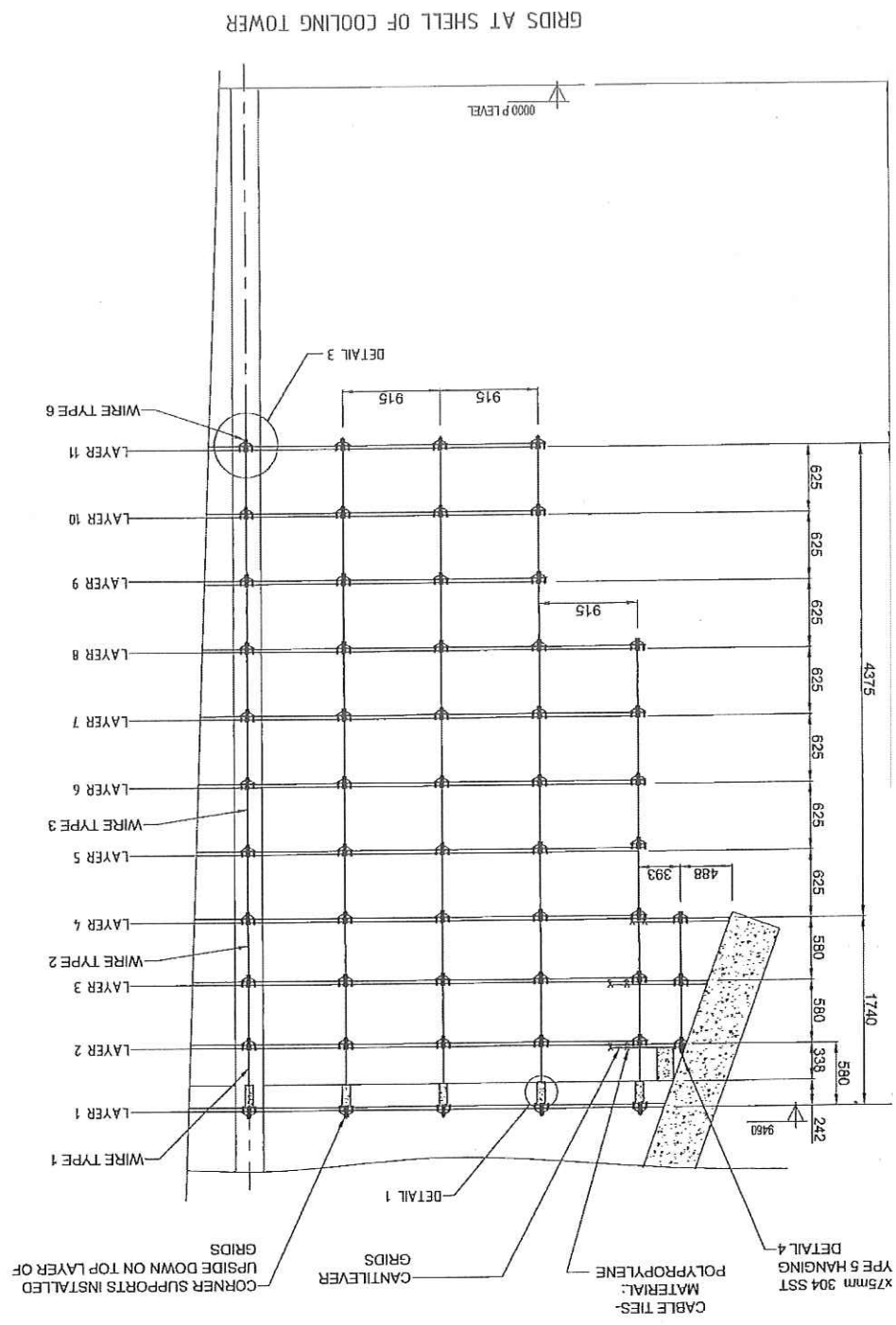
QA NB CLASS	LENGTH	N° OFF	TOTAL LENGTH
150	12	5000	140
150	12	240	2
200	12	5000	134
200	12	SEE PLAN FOR LENGTH	231.4
250	12	4850	152
250	12	SEE PLAN FOR LENGTH	55.0
300	12	5000	336
300	12	SEE PLAN FOR LENGTH	687.04
350	12	5000	220
350	12	SEE PLAN FOR LENGTH	1264.0
400	12	355	2
			0.67

NOTE: ALL THESE PIPES AS 1A, 2A, 3A, 4A, 5A, 6A, 7A, 8A, 9A, 10A, 11A, 12A, 13A, 14A, 15A, 16A, 17A, 18A, 19A, 20A, 21A, 22A, 23A, 24A, 25A, 26A, 27A, 28A, 29A, 30A, 31A, 32A, 33A, 34A, 35A, 36A ARE SHOWN ON PLAN. THESE ARE 4" OFF EACH OF THESE PIPES.

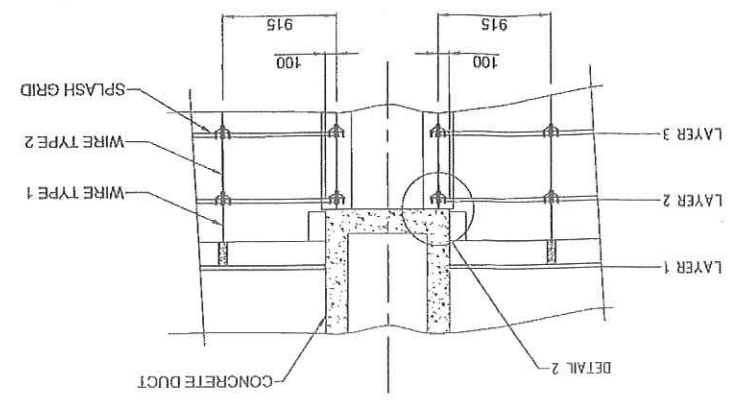


REF	PIPE NO	N° OFF	PIPE MARKS	REF	PIPE NO	N° OFF	PIPE MARKS
IA	150	12	A.150	1K	20	20	A.20
IB	150	12	A.150	1L	20	20	A.20
IC	150	12	A.150	1M	20	20	A.20
ID	150	12	A.150	1N	20	20	A.20
IE	150	12	A.150	1O	20	20	A.20
IF	150	12	A.150	1P	20	20	A.20
IG	150	12	A.150	1Q	20	20	A.20
IH	150	12	A.150	1R	20	20	A.20
II	150	12	A.150	1S	20	20	A.20
IJ	150	12	A.150	1T	20	20	A.20
IK	150	12	A.150	1U	20	20	A.20
IL	150	12	A.150	1V	20	20	A.20
IM	150	12	A.150	1W	20	20	A.20
IN	150	12	A.150	1X	20	20	A.20
IO	150	12	A.150	1Y	20	20	A.20
IP	150	12	A.150	1Z	20	20	A.20
IQ	150	12	A.150	1AA	20	20	A.20
IR	150	12	A.150	1AB	20	20	A.20
IS	150	12	A.150	1AC	20	20	A.20
IT	150	12	A.150	1AD	20	20	A.20
IU	150	12	A.150	1AE	20	20	A.20
IV	150	12	A.150	1AF	20	20	A.20
IV	150	12	A.150	1AG	20	20	A.20
IV	150	12	A.150	1AH	20	20	A.20
IV	150	12	A.150	1AI	20	20	A.20
IV	150	12	A.150	1AJ	20	20	A.20
IV	150	12	A.150	1AK	20	20	A.20
IV	150	12	A.150	1AL	20	20	A.20
IV	150	12	A.150	1AM	20	20	A.20
IV	150	12	A.150	1AN	20	20	A.20
IV	150	12	A.150	1AO	20	20	A.20
IV	150	12	A.150	1AP	20	20	A.20
IV	150	12	A.150	1AQ	20	20	A.20
IV	150	12	A.150	1AR	20	20	A.20
IV	150	12	A.150	1AS	20	20	A.20
IV	150	12	A.150	1AT	20	20	A.20
IV	150	12	A.150	1AU	20	20	A.20
IV	150	12	A.150	1AV	20	20	A.20
IV	150	12	A.150	1AW	20	20	A.20
IV	150	12	A.150	1AX	20	20	A.20
IV	150	12	A.150	1AY	20	20	A.20
IV	150	12	A.150	1AZ	20	20	A.20
IV	150	12	A.150	1BA	20	20	A.20
IV	150	12	A.150	1BB	20	20	A.20
IV	150	12	A.150	1BC	20	20	A.20
IV	150	12	A.150	1BD	20	20	A.20
IV	150	12	A.150	1BE	20	20	A.20
IV	150	12	A.150	1BF	20	20	A.20
IV	150	12	A.150	1BG	20	20	A.20
IV	150	12	A.150	1BH	20	20	A.20
IV	150	12	A.150	1BI	20	20	A.20
IV	150	12	A.150	1BJ	20	20	A.20
IV	150	12	A.150	1BK	20	20	A.20
IV	150	12	A.150	1BL	20	20	A.20
IV	150	12	A.150	1BM	20	20	A.20
IV	150	12	A.150	1BN	20	20	A.20
IV	150	12	A.150	1BO	20	20	A.20
IV	150	12	A.150	1BP	20	20	A.20
IV	150	12	A.150	1BQ	20	20	A.20
IV	150	12	A.150	1BR	20	20	A.20
IV	150	12	A.150	1BS	20	20	A.20
IV	150	12	A.150	1BT	20	20	A.20
IV	150	12	A.150	1BU	20	20	A.20
IV	150	12	A.150	1BV	20	20	A.20
IV	150	12	A.150	1BW	20	20	A.20
IV	150	12	A.150	1BX	20	20	A.20
IV	150	12	A.150	1BY	20	20	A.20
IV	150	12	A.150	1BZ	20	20	A.20
IV	150	12	A.150	1CA	20	20	A.20
IV	150	12	A.150	1CB	20	20	A.20
IV	150	12	A.150	1CC	20	20	A.20
IV	150	12	A.150	1CD	20	20	A.20
IV	150	12	A.150	1CE	20	20	A.20
IV	150	12	A.150	1CF	20	20	A.20
IV	150	12	A.150	1CG	20	20	A.20
IV	150	12	A.150	1CH	20	20	A.20
IV	150	12	A.150	1CI	20	20	A.20
IV	150	12	A.150	1CJ	20	20	A.20
IV	150	12	A.150	1CK	20	20	A.20
IV	150	12	A.150	1CL	20	20	A.20
IV	150	12	A.150	1CM	20	20	A.20
IV	150	12	A.150	1CN	20	20	A.20
IV	150	12	A.150	1CO	20	20	A.20
IV	150	12	A.150	1CP	20	20	A.20
IV	150	12	A.150	1CQ	20	20	A.20
IV	150	12	A.150	1CR	20	20	A.20
IV	150	12	A.150	1CS	20	20	A.20
IV	150	12	A.150	1CT	20	20	A.20
IV	150	12	A.150	1CU	20	20	A.20
IV	150	12	A.150	1CV	20	20	A.20
IV	150	12	A.150	1CW	20	20	A.20
IV	150	12	A.150	1CX	20	20	A.20
IV	150	12	A.150	1CY	20	20	A.20
IV	150	12	A.150	1CZ	20	20	A.20
IV	150	12	A.150	1DA	20	20	A.20
IV	150	12	A.150	1DB	20	20	A.20
IV	150	12	A.150	1DC	20	20	A.20
IV	150	12	A.150	1DD	20	20	A.20
IV	150	12	A.150	1DE	20	20	A.20
IV	150	12	A.150	1DF	20	20	A.20
IV	150	12	A.150	1DG	20	20	A.20
IV	150	12	A.150	1DH	20	20	A.20
IV	150	12	A.150	1DI	20	20	A.20
IV	150	12	A.150	1DJ	20	20	A.20
IV	150	12	A.150	1DK	20	20	A.20
IV	150	12	A.150	1DL	20	20	A.20
IV	150	12	A.150	1DM	20	20	A.20
IV	150	12	A.150	1DN	20	20	A.20
IV	150	12	A.150	1DO	20	20	A.20
IV	150	12	A.150	1DP	20	20	A.20
IV	150	12	A.150	1DQ	20	20	A.20
IV	150	12	A.150	1DR	20	20	A.20
IV	150	12	A.150	1DS	20	20	A.20
IV	150	12	A.150	1DT	20	20	A.20
IV	150	12	A.150	1DU	20	20	A.20
IV	150	12	A.150	1DV	20	20	A.20
IV	150	12	A.150	1DW	20	20	A.20
IV	150	12	A.150	1DX	20	20	A.20
IV	150	12	A.150	1DY	20	20	A.20
IV	150	12	A.150	1DZ	20	20	A.20
IV	150	12	A.150	1EA	20	20	A.20
IV	150	12	A.150	1EB	20	20	A.20
IV	150	12	A.150	1EC	20	20	A.20
IV	150	12	A.150	1ED	20	20	A.20
IV	150	12	A.150	1EE	20	20	A.20
IV	150	12	A.150	1EF	20	20	A.20
IV	150	12	A.150	1EG	20	20	A.20
IV	150	12	A.150	1EH	20	20	A.20
IV	150	12	A.150	1EI	20	20	A.20
IV	150	12	A.150	1EJ	20	20	A.20
IV	150	12	A.150	1EK	20	20	A.20
IV	150	12	A.150	1EL	20	20	A.20
IV	150	12	A.150	1EM	20	20	A.20
IV	150	12	A.150	1EN	20	20	A.20
IV	150	12	A.150	1EO	20	20	A.20
IV	150	12	A.150	1EP	20	20	A.20
IV	150	12	A.150	1EQ	20	20	A.20
IV	150	12	A.150	1ER	20	20	A.20
IV	150	12	A.150	1ES	20	20	A.20
IV	150	12	A.150	1ET	20	20	A.20
IV	150	12	A.150	1EU	20	20	A.20
IV	150	12	A.150	1EV	20	20	A.20
IV	150	12	A.150	1EW	20	20	A.20
IV	150	12	A.150	1EX	20	20	A.20
IV	150	12	A.150	1EY	20	20	A.20
IV	150	12	A.150	1EZ	20	20	A.20
IV	150	12	A.150	1FA	20	20	A.20
IV	150	12	A.150	1FB	20	20	A.20
IV	150						

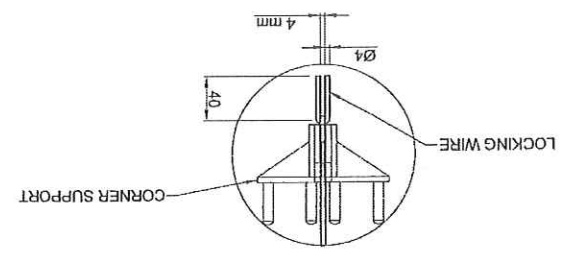
450	M8x75 EYE BOLT	304 SST
460	WIRE TYPE 6	304 SST
460	WIRE TYPE 5	304 SST
700	WIRE TYPE 4	304 SST
12500	WIRE TYPE 3	304 SST
17900	WIRE TYPE 2	304 SST
9000	WIRE TYPE 1	304 SST



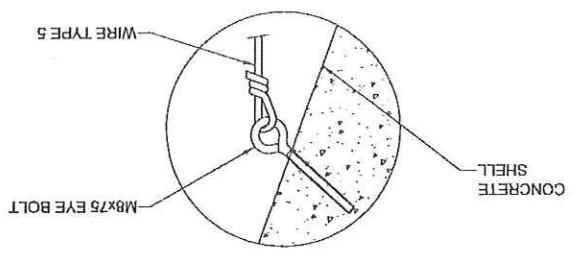
GRIDS UNDER OF DUCT
N.T.S.



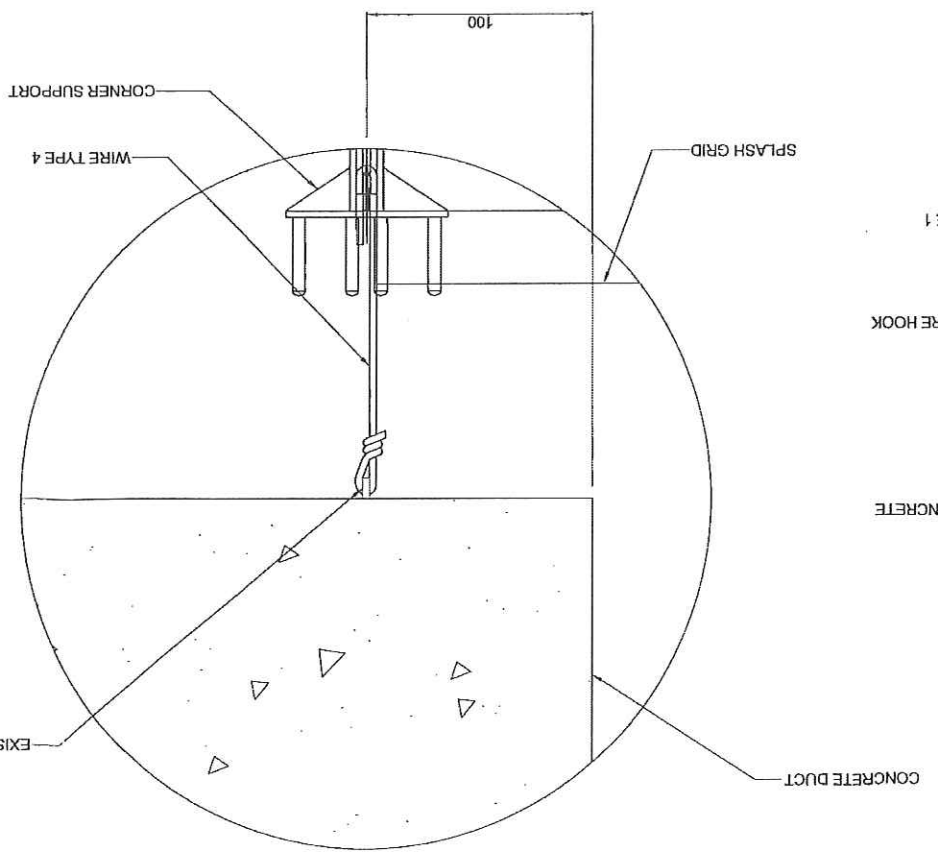
DETAIL 3
LOCKING WIRE INSTALLATION
N.T.S.



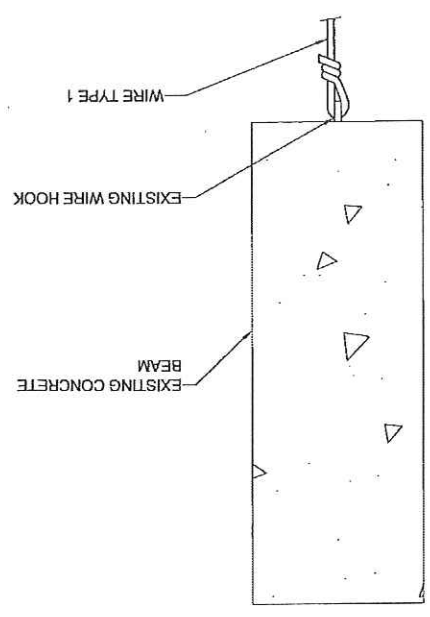
DETAIL 4
WIRE ASSEMBLY @ SHELL
N.T.S.



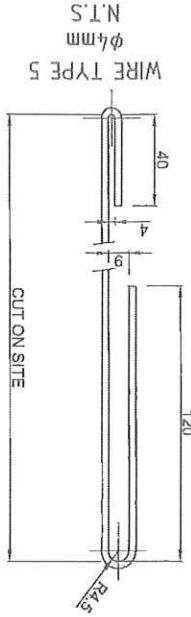
DETAIL 2
WIRE ASSEMBLY UNDER DUCT
N.T.S.



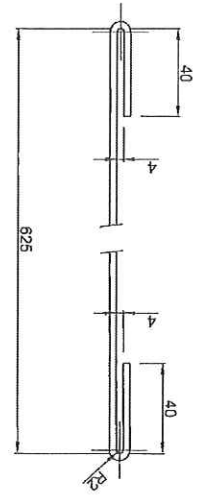
DETAIL 1
WIRE ASSEMBLY
N.T.S.



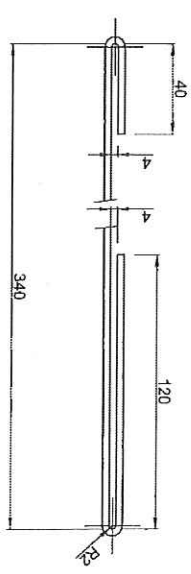
047-57431



WIRE TYPE 3
φ4mm
N.T.S.



WIRE TYPE 1
φ4mm
N.T.S.



1

40

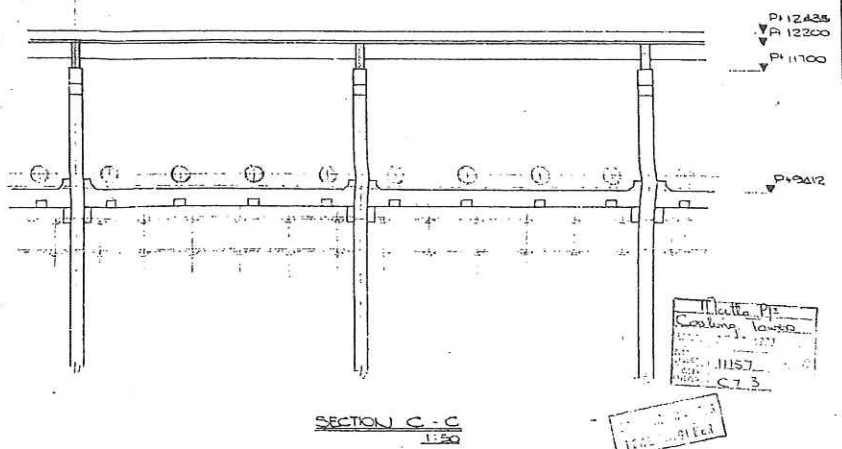
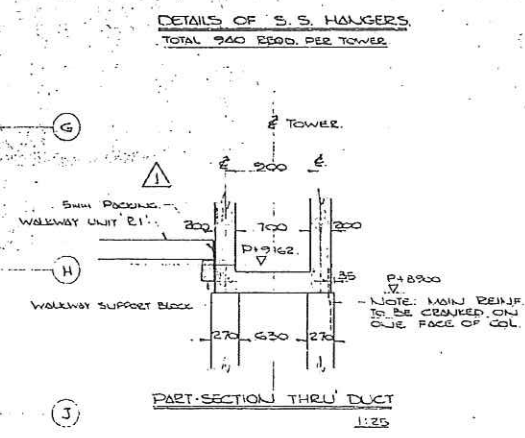
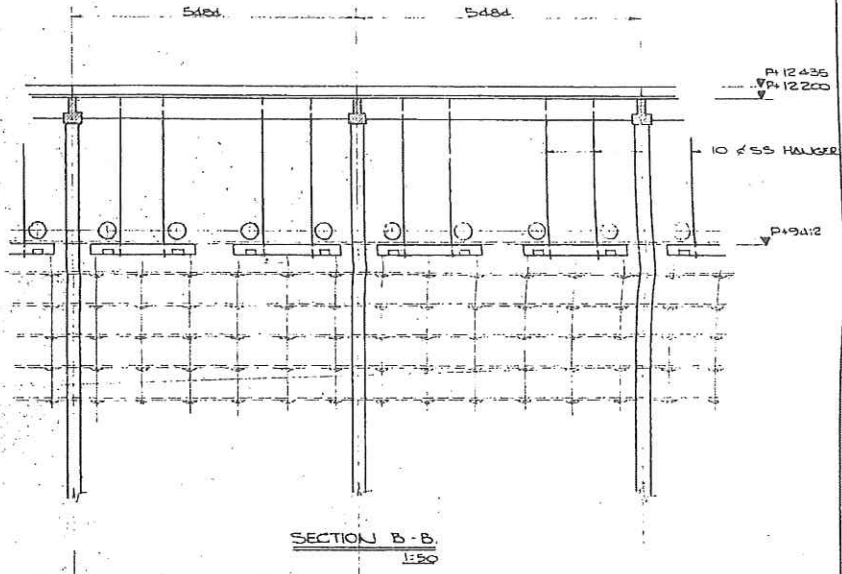
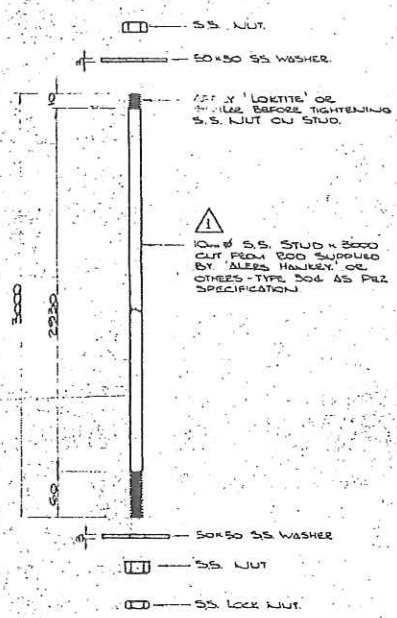
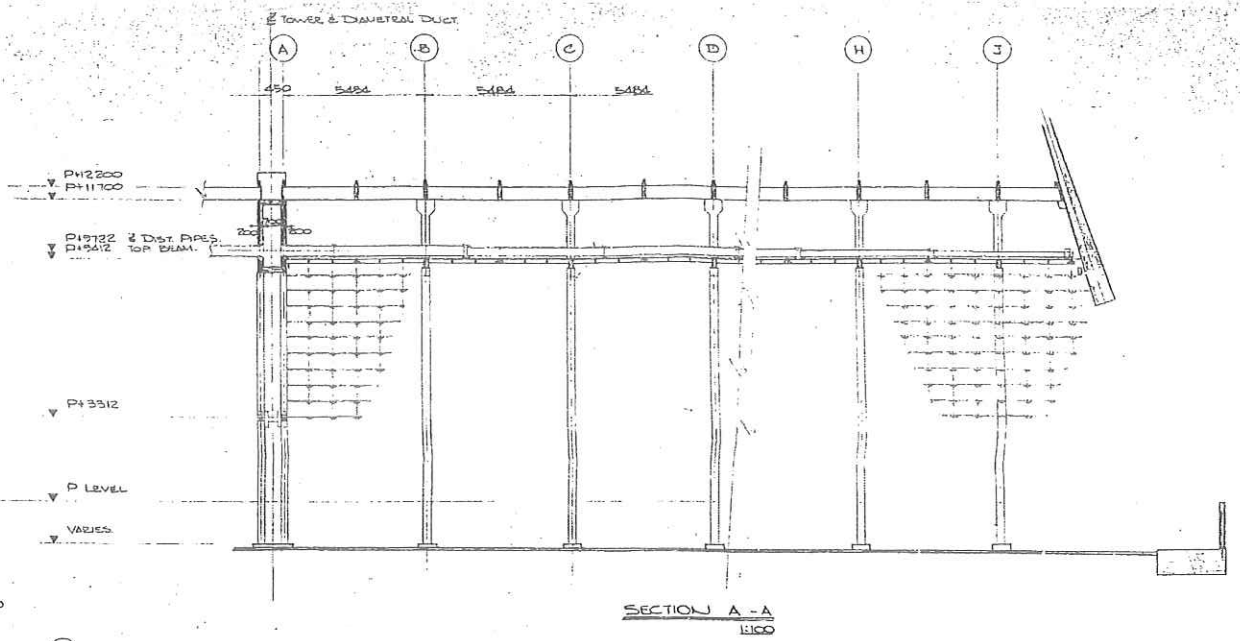
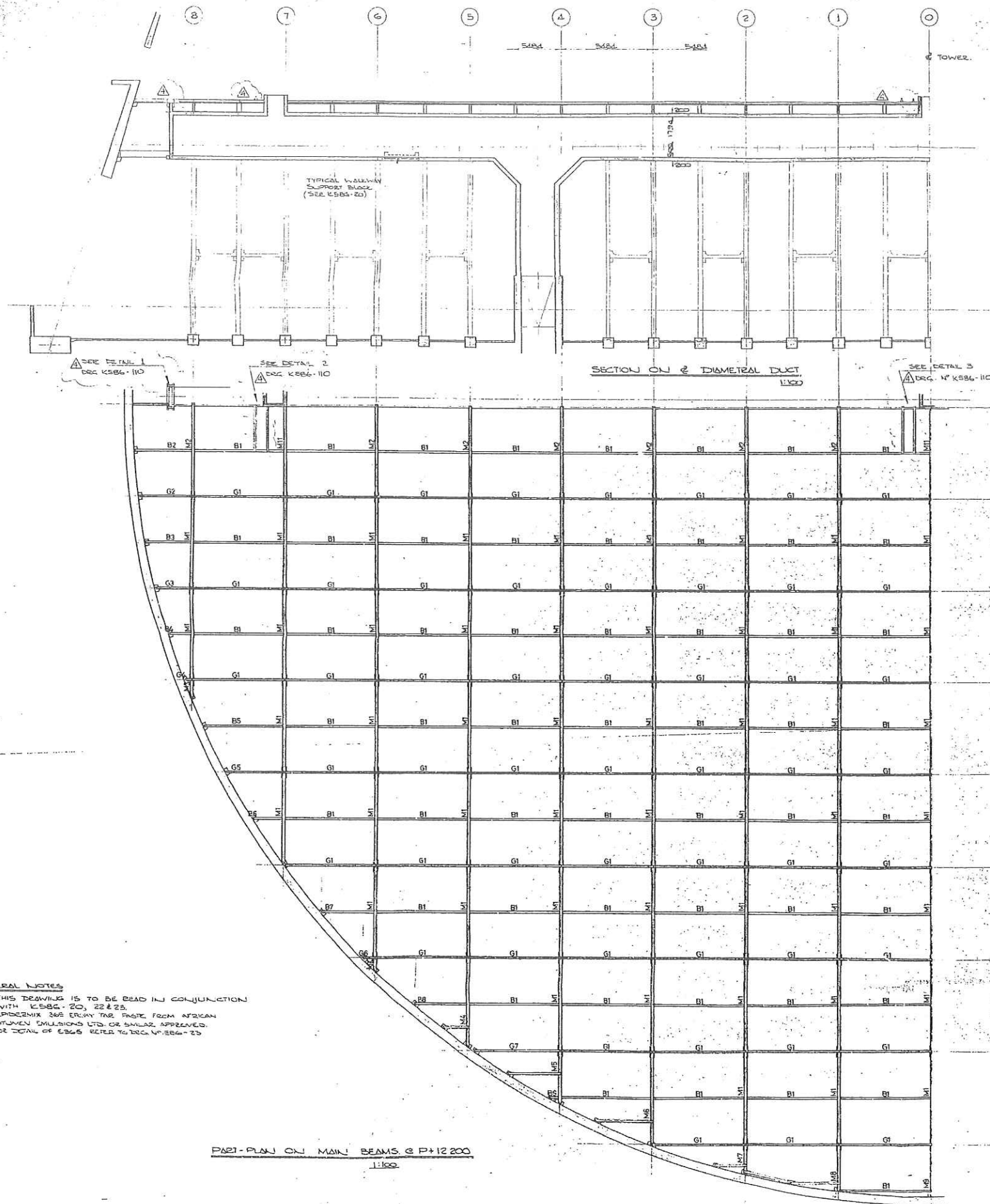
120

40

4

4

40



GENERAL NOTES
 ✓ THIS DRAWING IS TO BE READ IN CONJUNCTION WITH K586-20, 22 & 25.
 ✓ EPDMIX 265 EMULY TAR PASTE FROM AFRICAN BITUMEN EMULSIONS LTD. OR SIMILAR APPROVED FOR TOTAL OF 6366 REFER TO Dwg. K586-25.
 ✗

WATERMEYER, LEGGE, PIESOLD & UHLMANN CONSULTING ENGINEERS P.L.M. 15-7-76	DESIGNED	REV 1	14.9.76	REV 2	29.9.76	REV 3	2.4.77	REV 4	13.3.78
	DRAWN	B. DOUBELL	JULY 76	BEAM POSITIONS ADDED & S.S. HANGERS ALREADY SECTION THRU DUCT MODIFIED.	SECTIONS B-B & C-C WALKWAY SUPPORT BLOCKS ON SIDES OF BEAMS MODIFIED.	ADDITION OF NOTE NO. 2 & 3.	J.B.	THIS Dwg. FOR TOWER 1 ONLY, FOR TOWERS 2 & 3 SEE Dwg. NO. K586-111 BEAMS ALONG DIAMETRAL DUCT ALREADY ALTERED.	R.P.P.
	TRACED								
	CHECKED	R.P.P.	JULY 76						
K 586-19									

REV	0	1	2	3	4
ISSUE DATE	16.7.76	19.9.76	10/2/77	19/7/77	10/2/78
HIGH STRUCTURES	3	1	2	2	2
ESCOM	2	2	2	2	2

0.47/3105 Rv 4
 ESC.
 MATLA POWER STATION
 COOLING TOWER 1
 GENERAL ARRANGEMENT OF STACK AT ELIMINATOR LEVEL
 DRAWING No. K586-19
 REV. 4