

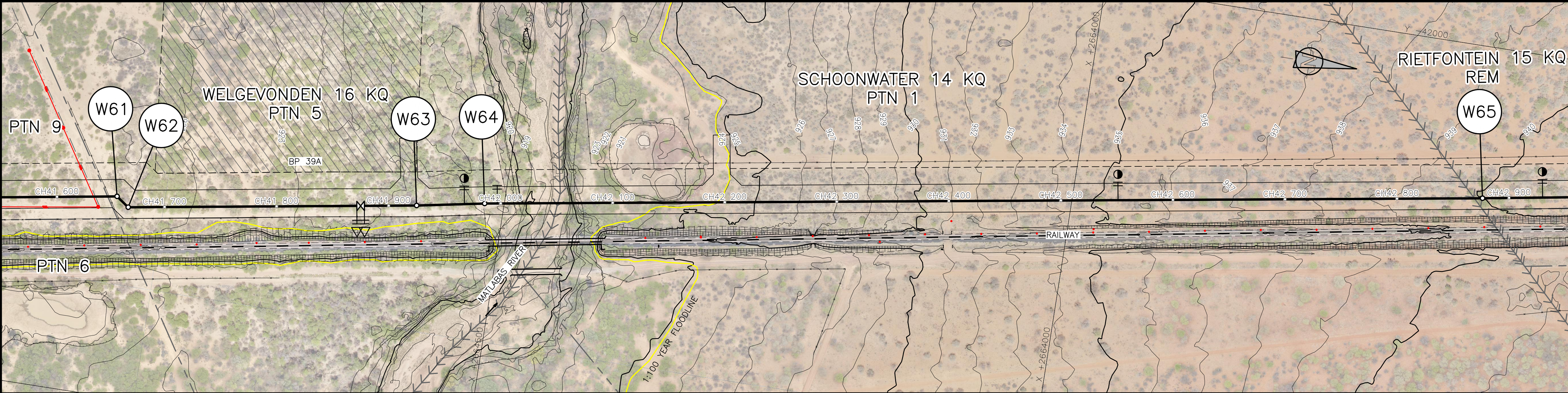
NOTES:

1. REFER TO DRAWING 2F-C6-001 FOR SERVITUDE CROSS SECTION.

2. REFER TO DRAWING 2A-C6-110 AND 111 FOR TYPICAL TRENCH DETAILS.

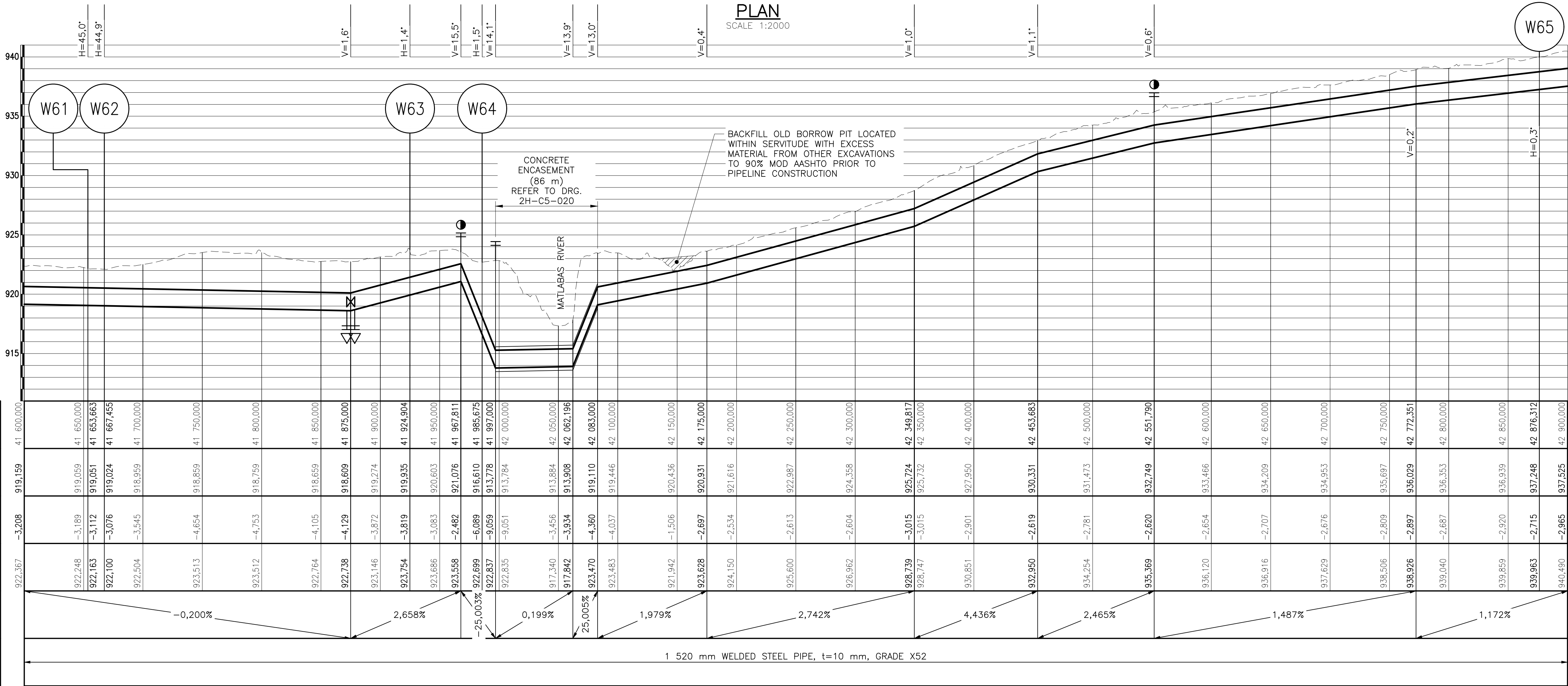
COORDINATE LIST		
WC27		
Node	YLo	XLo
W60	-42 374.461	+2 665 160.715
W61	-42 321.916	+2 664 842.430
W62	-42 329.949	+2 664 831.219
W63	-42 288.585	+2 664 577.115
W64	-42 277.321	+2 664 517.397
W65	-42 134.514	+2 663 638.283
W66	-42 014.607	+2 662 927.278

LEGEND	
	PERMANENT SERVITUDE
	TEMPORARY SERVITUDE
	PIPELINE
	AIR VALVE
	SCOUR VALVE
	ACCESS TO PIPELINE
	ISOLATING VALVE
	FLOW METER
	NON-RETURN VALVE
	OFF-TAKE
	BENCHMARK
	FARM BOUNDARY
	CADASTRAL BOUNDARY
	EXISTING SERVITUDE
	EXISTING FENCES
	POWERLINES



Datum : 911 m

CHAINAGE (m)
INVERT LEVEL
DEPTH TO INVERT
GROUND LEVEL
PIPE GRADES
PIPE DETAILS

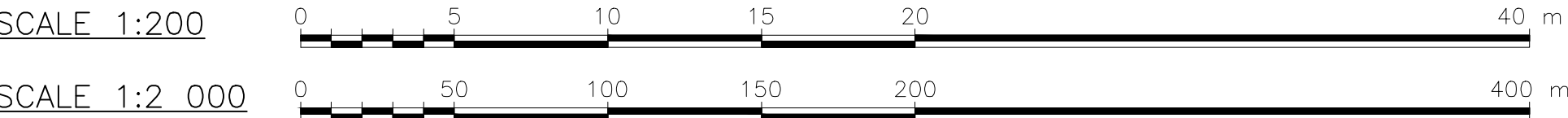


LONGITUDINAL SECTION

SCALE HORIZONTAL 1:2 000
SCALE VERTICAL 1:200

2	PIPELINE DATA SHEET	2H-C1-002	XXXXXXXXXX
1	PIPELINE DATA SHEET	2H-C1-001	XXXXXXXXXX
SHEET	DESCRIPTION	OTHER No.	REG. No.

LIST OF DRAWINGS



CONSULTING ENGINEER

GBN
JOINT VENTURE

WOODMEAD NORTH OFFICE PARK
54 MAXWELL DRIVE
WOODMEAD

IMPLEMENTING AGENT

TCTA
A new word for water

REVISION		FOR	DWS
MOD No.	DATE		
T1	07/21	ISSUED FOR TENDER	PvH

TENDER
DRAWING

DEPARTMENT OF WATER AND SANITATION
REPUBLIC OF SOUTH AFRICA

HEAD OFFICE
ENGINEERING SERVICES
PRIVATE BAG X313
PRETORIA 0001

SEDBENG BUILDING
185 FRANCIS BAARD STREET
PRETORIA
(012) 336-7500

P. DU PLESSIS
Pr. Eng: 810012
CHECKED: 10/08/2021
DATE: 10/08/2021

P. VAN HEERDEN
Pr. Eng: 920029
ENGINEER: 10/08/2021
DATE: 10/08/2021

P. VAN HEERDEN
Pr. Eng: 920029
10/08/2021
DATE: 10/08/2021

CHIEF ENGINEER / APP (Pr. Eng): DATE: DIRECTOR (Pr. Eng): DATE:

MOKOLO CROCODILE WATER AUGMENTATION PROJECT PHASE 2 (MCWAP-2)

GRAVITY MAIN
PLAN AND LONGITUDINAL SECTION
CH41 600 TO CH42 900

PROVINCE:	LIMPOPO	DISTRICT:	THABAZIMBI/LEPHALE	KEYCODES:		OTHER NUMBER	2H-C4-034
LOCALITY No.:	XXXXXX	TENDER/ CONTRACT No.	XXXXXXXXXXXX	SHEET	REG. No.		REV.
CALCULATION FILE:	XXXXXXXXXXXXXXXXXXXX			33 of 78			T1