

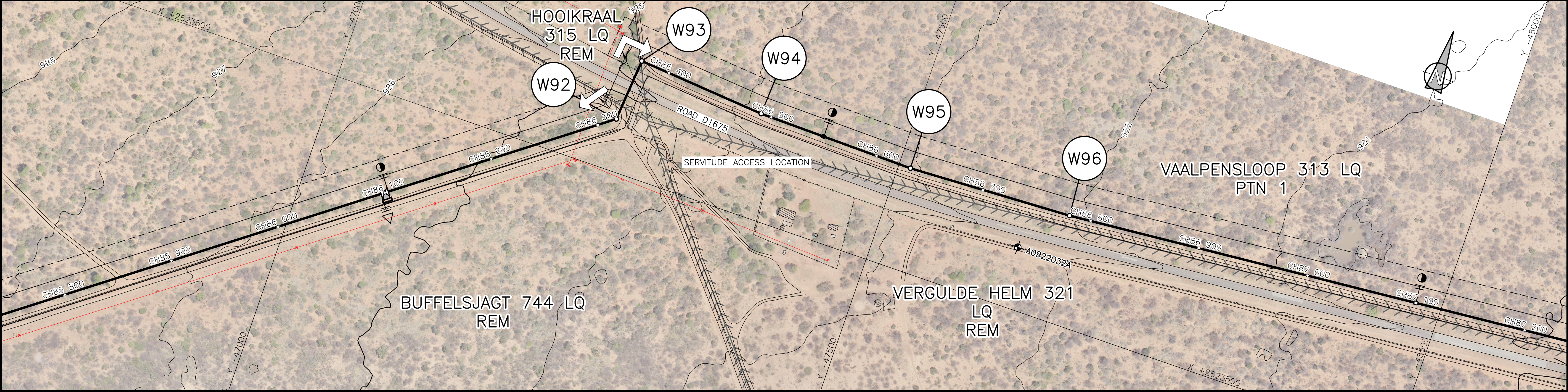
NOTES:

1. REFER TO DRAWING 2F-C6-001 FOR SERVITUDE CROSS SECTION.

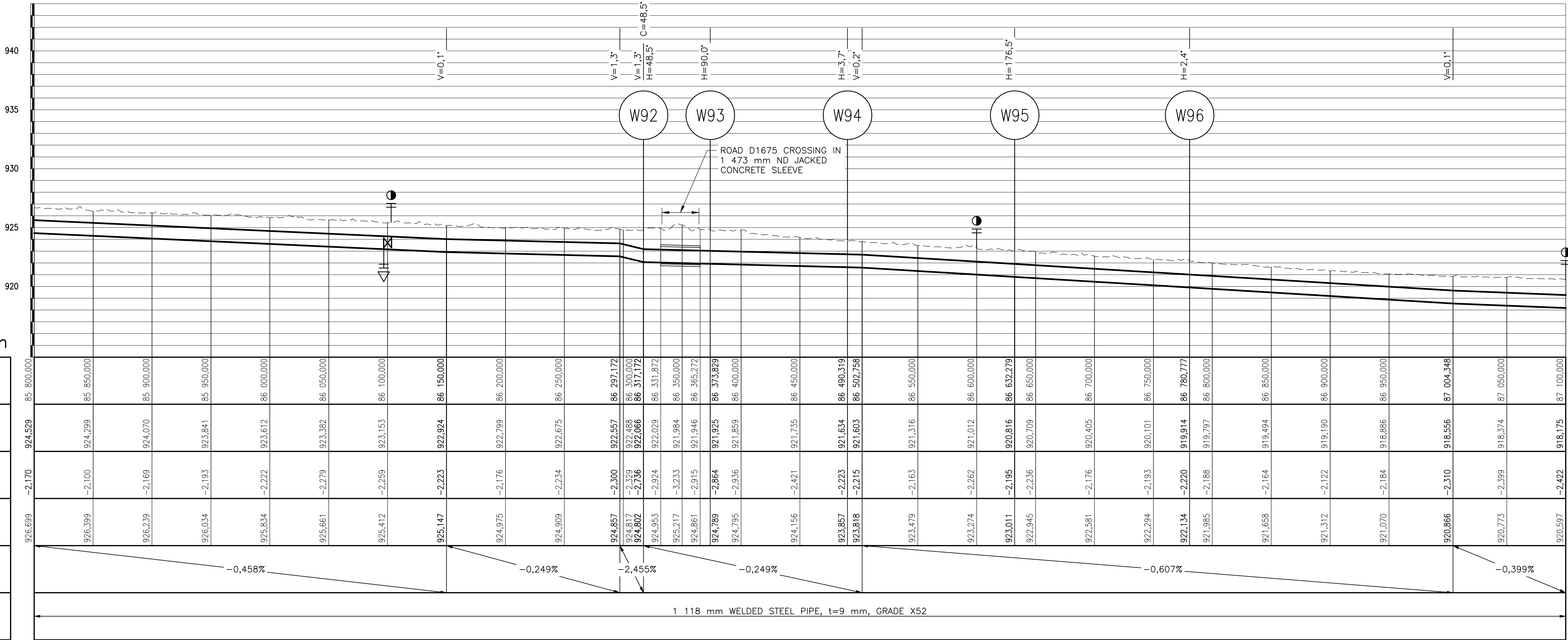
2. REFER TO DRAWING 2A-C6-110 AND 111 FOR TYPICAL TRENCH DETAILS.

COORDINATE LIST		
WG27		
Node	YLo	XLo
W91	-46 515.381	+2 624 001.894
W92	-47 247.955	+2 623 454.466
W93	-47 252.634	+2 623 398.003
W94	-47 368.726	+2 623 407.624
W95	-47 510.665	+2 623 410.110
W96	-47 659.023	+2 623 403.671
W97	-50 660.094	+2 623 144.785

LEGEND	
	PERMANENT SERVITUDE
	TEMPORARY SERVITUDE
	PIPELINE
	AIR VALVE
	SCOUR VALVE
	ACCESS TO PIPELINE
	ISOLATING VALVE
	FLOW METER
	NON-RETURN VALVE
	OFF-TAKE
	BENCHMARK
	FARM BOUNDARY
	CADASTRAL BOUNDARY
	EXISTING SERVITUDE
	EXISTING FENCES
	POWERLINES

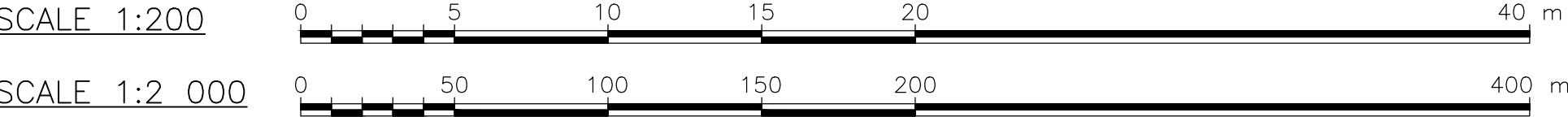


PLAN
SCALE 1:2000



LONGITUDINAL SECTION
SCALE HORIZONTAL 1:2 000
SCALE VERTICAL 1:200

2	PIPELINE DATA SHEET	2H-C1-002	XXXXXXXXXX
1	PIPELINE DATA SHEET	2H-C1-001	XXXXXXXXXX
SHEET	DESCRIPTION	OTHER No.	REG. No.
LIST OF DRAWINGS			



CONSULTING ENGINEER

GBN JOINT VENTURE

WOODMEAD NORTH OFFICE PARK
54 MAXWELL DRIVE
WOODMEAD

IMPLEMENTING AGENT

TCTA

A new word for water

MOD No.		DATE	REVISION		FOR	DWS
T1	07/21		ISSUED FOR TENDER		PVH	
T2	09/23		SERVITUDE ACCESS		PGP	

TENDER DRAWING

DEPARTMENT OF WATER AND SANITATION
REPUBLIC OF SOUTH AFRICA

HEAD OFFICE
ENGINEERING SERVICES
PRIVATE BAG X313
PRETORIA 0001

SEDIBENG BUILDING
185 FRANCIS BAARD STREET
PRETORIA
(012) 336-7500

P. DU PLESSIS
Pr. Eng: 810012
CHECKED: 10/08/2021
DATE:

P. VAN HEERDEN
Pr. Eng: 920029
ENGINEER: 10/08/2021
DATE:

P. VAN HEERDEN
Pr. Eng: 920029
10/08/2021
DATE:

DESIGN: P. VAN HEERDEN
DRAWN: A. STEENBERG

EXTERNAL APPROVAL: DATE:

CHIEF ENGINEER / APP (Pr. Eng): DATE: DIRECTOR (Pr. Eng): DATE:

MOKOLO CROCODILE WATER AUGMENTATION PROJECT PHASE 2 (MCWAP-2)

**GRAVITY MAIN
PLAN AND LONGITUDINAL SECTION
CH85 800 TO CH87 100**

PROVINCE: LIMPOPO DISTRICT: THABAZIMBI/LEPHALALE KEYCODES: OTHER NUMBER 2H-C4-068

LOCALITY No.: XXXXXX TENDER/ CONTRACT No. XXXXXXXXXXXX SHEET 67 of 78 REG. No. T2

CALCULATION FILE: XXXXXXXXXXXXXXXXXXXX