

INSET SCALE : 1 / 1 500

LAND INCLUDING IMPROVEMENTS

Description	Asset No.	Area
1 ptn of Rem of ERF 19719, EAST LONDON	EBX2457L	± 220m ²
ptn of Rem of ERF 19719, EAST LONDON	EBX2458L	± 13 895m ²
ptn of Rem of ERF 19711, EAST LONDON	EBX2466L	± 145m ²
TOTAL		± 14 260m²
2 ptn of ERF 19762, EAST LONDON	EBX3410L	± 7 422 m ²
ptn of Rem of ERF 19720, EAST LONDON	EBX2468L	± 1 999 m ²
TOTAL		± 9 421 m²
3 ptn of Rem of ERF 19720, EAST LONDON	EBX2468L	± 13 422 m ²
4 ptn of Rem of ERF 19720, EAST LONDON	EBX2468L	± 7 929 m ²
TOTAL AREA		± 45 032m²

LIST OF IMPROVEMENTS

Description	Asset No.	Area
OFFICE & TOILET	02EH041L	± 12 m ²
WASH FACILITY	02ZH100L	± 4 m ²
STORE	03GH004L	± 14 m ²
FUEL TANK	04NH005L	± 694 m ²
FUEL TANK	04NH057L	± 22 m ²
OIL SEPARATOR	05ZH070L	± 5 m ²
OIL SEPARATOR	05ZH072L	± 2 m ²
TOTAL		±753m²

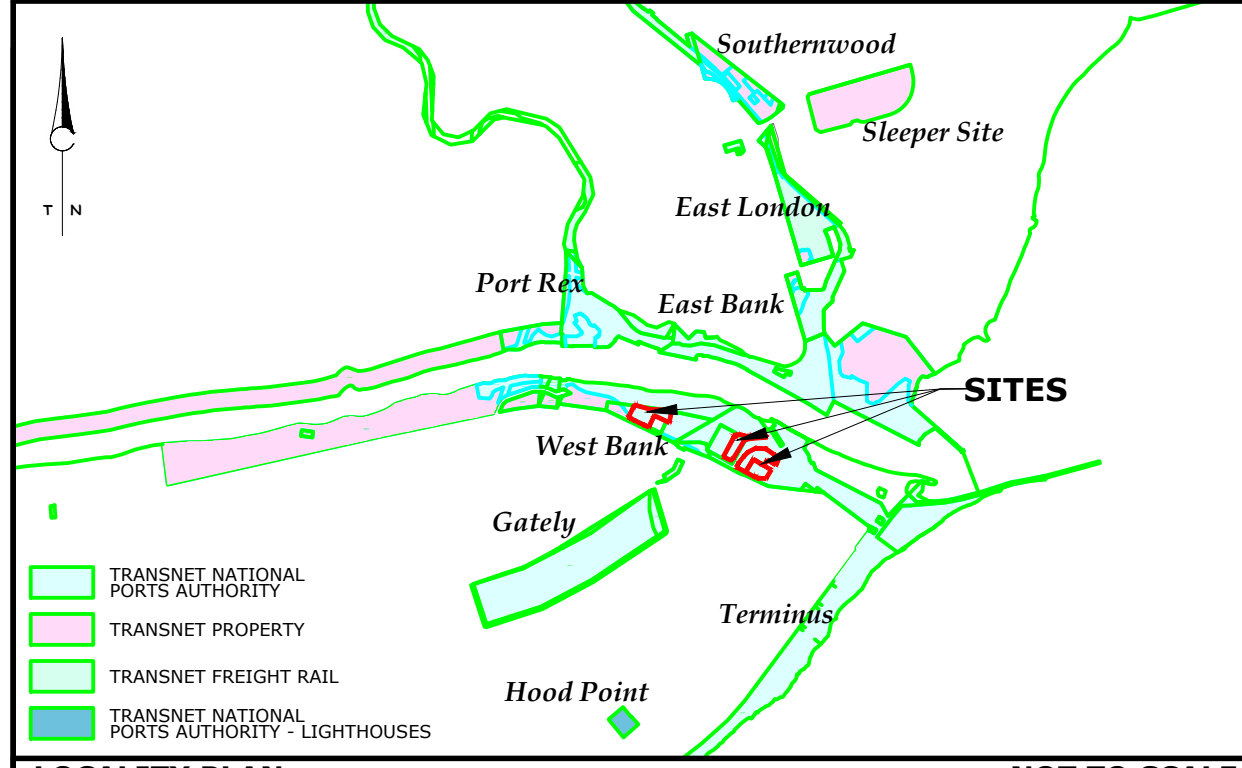
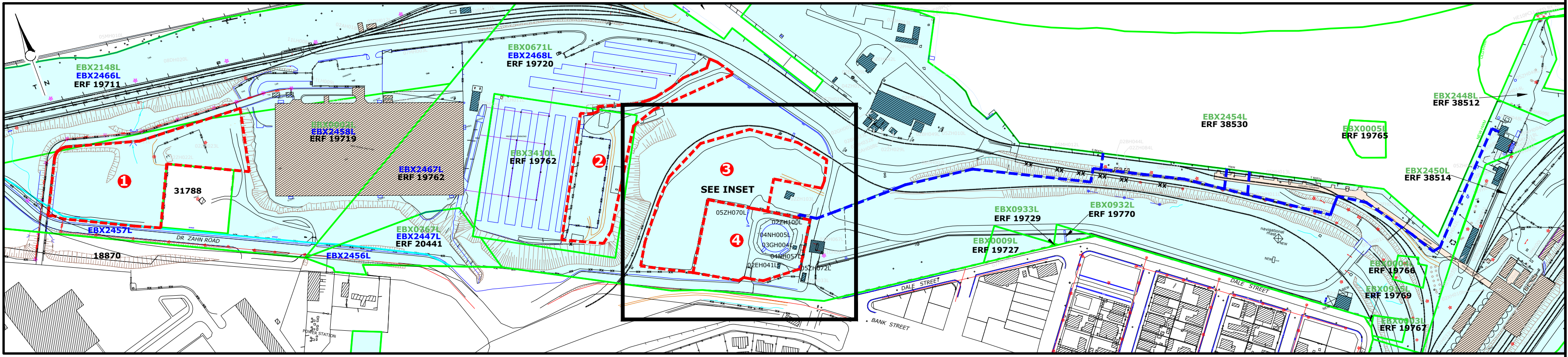
Plan prepared for:
TRANSNET
 TRANSNET NATIONAL PORTS AUTHORITY
 REAL ESTATE
 Port Control Building
 Ganteaume Crescent
 Port of East London
 Contact person: Mr Vuyolwethu Makunga
 Tel: (043) 700 1022

LEGEND:

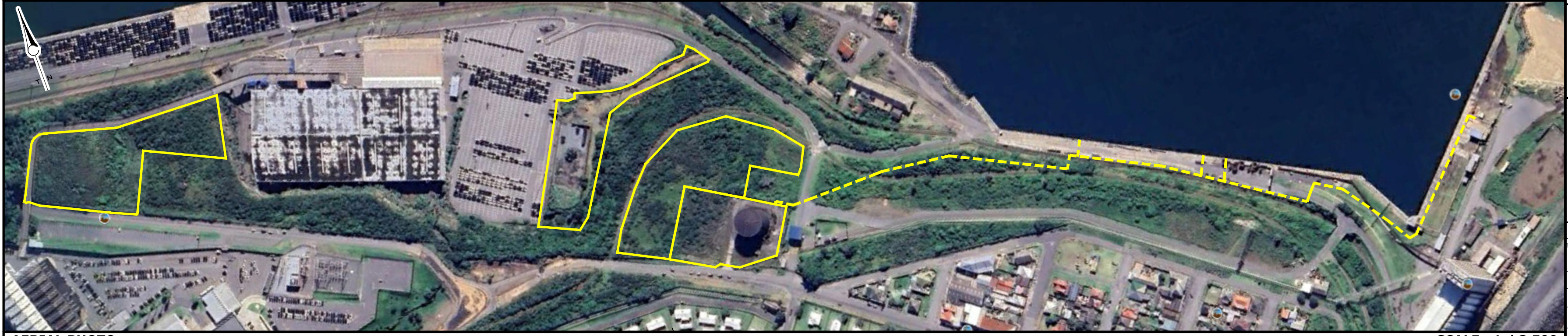
Ownership

- Buildings and Structures
- Land

- TRANSNET NATIONAL PORTS AUTHORITY
- TRANSNET PORT TERMINAL
- TRANSNET CADASTRAL BOUNDARY
- AREAS AVAILABLE FOR LEASING
- FUEL PIPELINE ROUTE



LOCALITY PLAN NOT TO SCALE



AERIAL PHOTO SCALE : 1 / 3 500

Plan prepared by:
TRANSNET
 TRANSNET PROPERTY, GEO-SPATIAL: EASTERN CAPE REGION
 Room 502, 5th Floor, PO Box 1030
 Transnet Building GOEBERHA 6000
 Tel: (041) 507-1331
 Fax: (041) 507-2884

EAST LONDON

PLAN SHOWING AREAS AVAILABLE FOR LEASING

Compiled: W.CERFONTEYN	Checked: M.MOODALEY	Client File Ref.: _____
		GS File Ref.: _____
		Original Ref.: _____
Date: 2023-12-05	SCALE : 1 / 3 500	
COPYRIGHT AND RIGHT OF REPRODUCTION OF THIS DRAWING OR PART THEREOF IS RESERVED BY TRANSNET PROPERTY.		
Rev. #:-	PLAN No. ELN_0654m	